

NOTES:

1. All habitable rooms on the upper storeys to have window openings in accordance with technical guidance document B.

2. External/Party walls to be cavity wall construction where external and 215mm block where internal, alternatively timber frame construction to be used.

3. All internal & external doors to be in compliance with technical guidance document M.

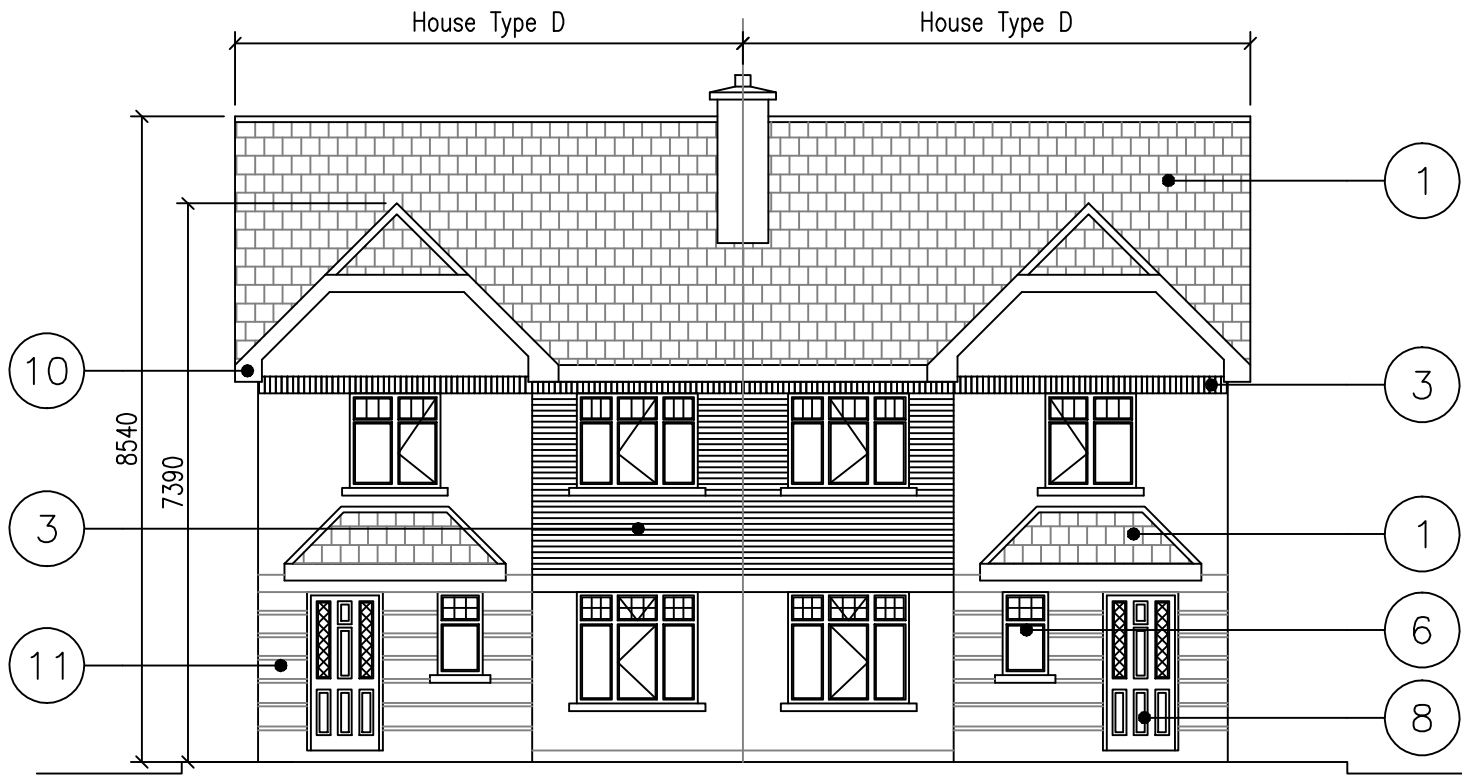
House Type D

FINISHED FLOOR LEVELS:
Level of houses varies
(See Site Plan Dwg 752-01)

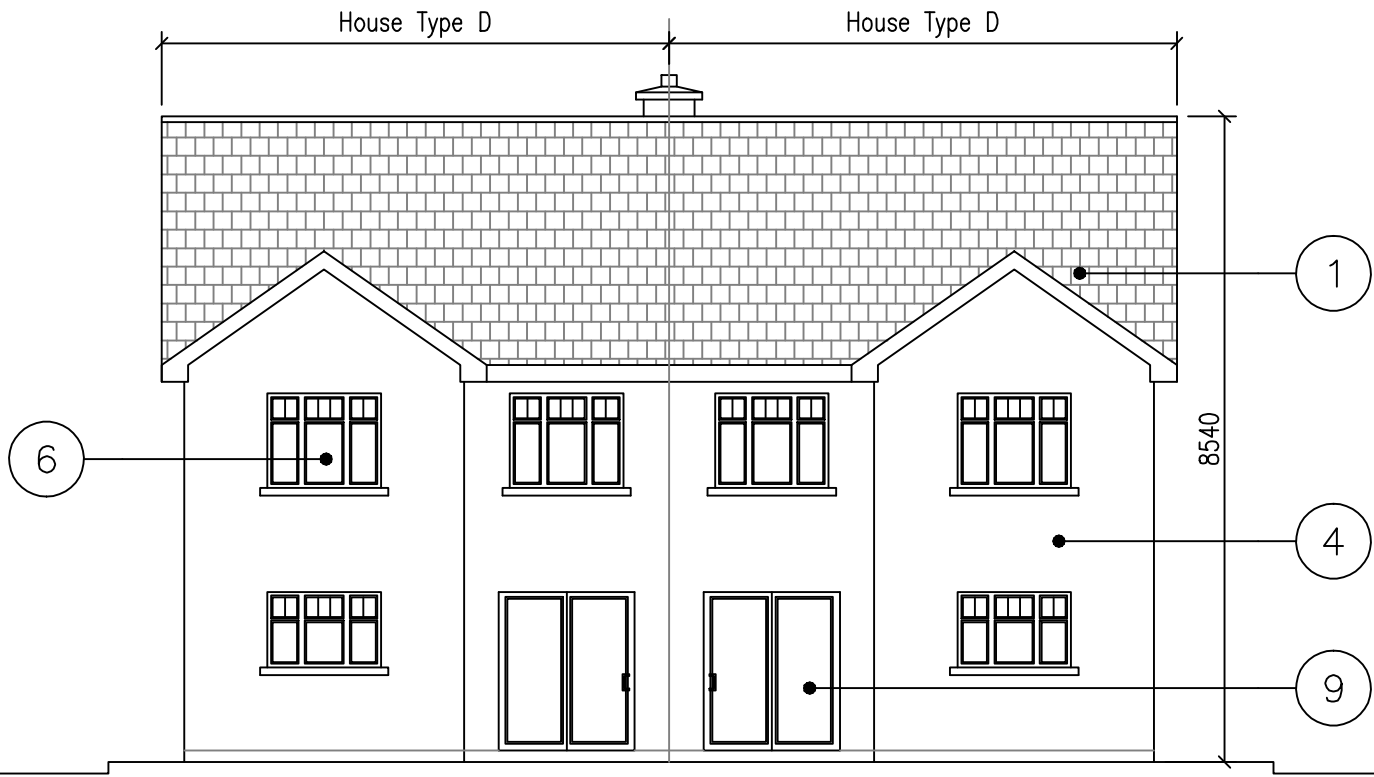
NORTH POINT:
Orientation of houses varies
(See Site Plan - Dwg 752-01)

| REV | DWG. | REVISION | ISSUE | DRAWN | CHECKED | DATE |
|-----|--------|----------|----------|-------|---------|----------|
| A | ISSUED | FOR | PLANNING | SB | VT | 22.04.09 |

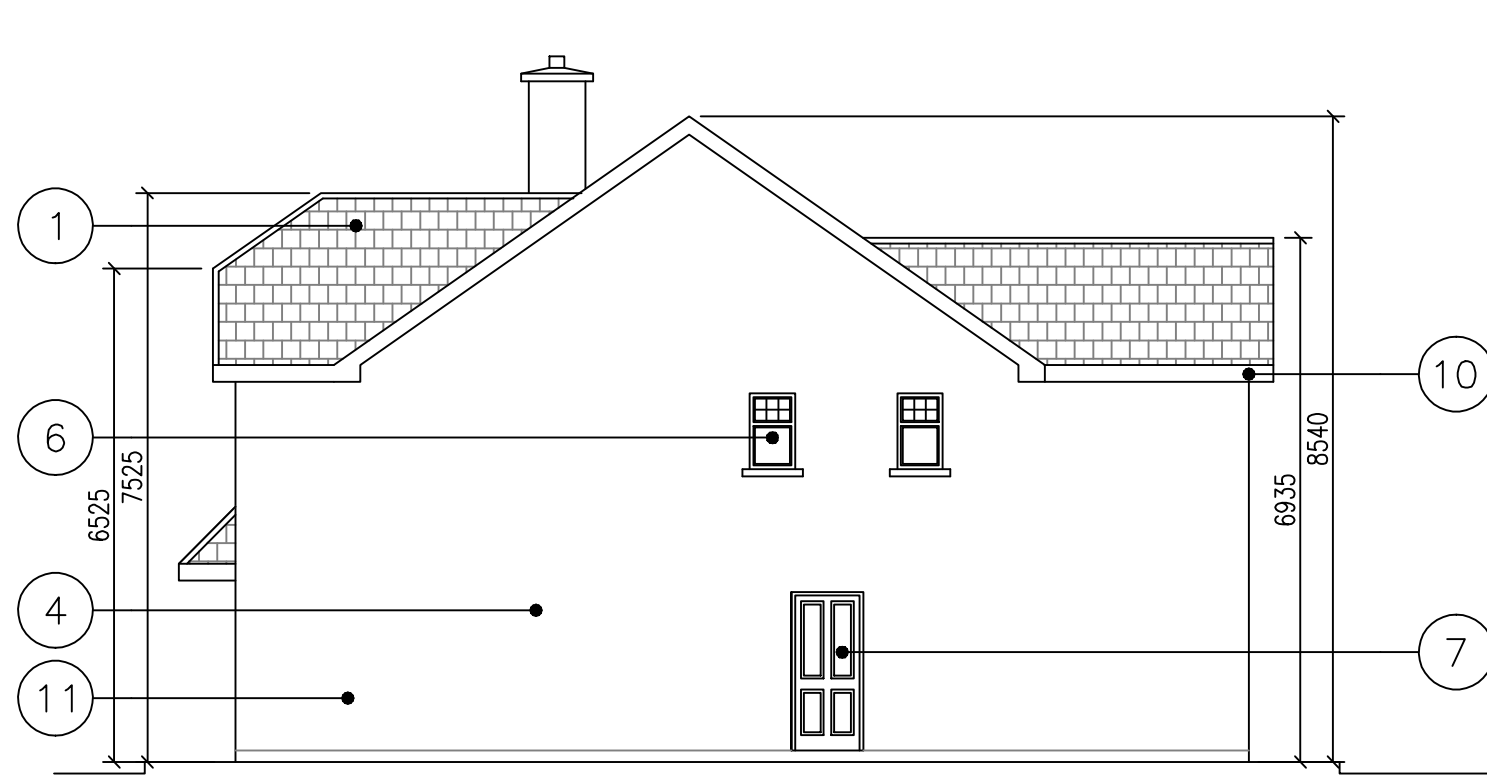
Note: This house type is also shown handed for orientation see site plan (See Dwg 752-01)



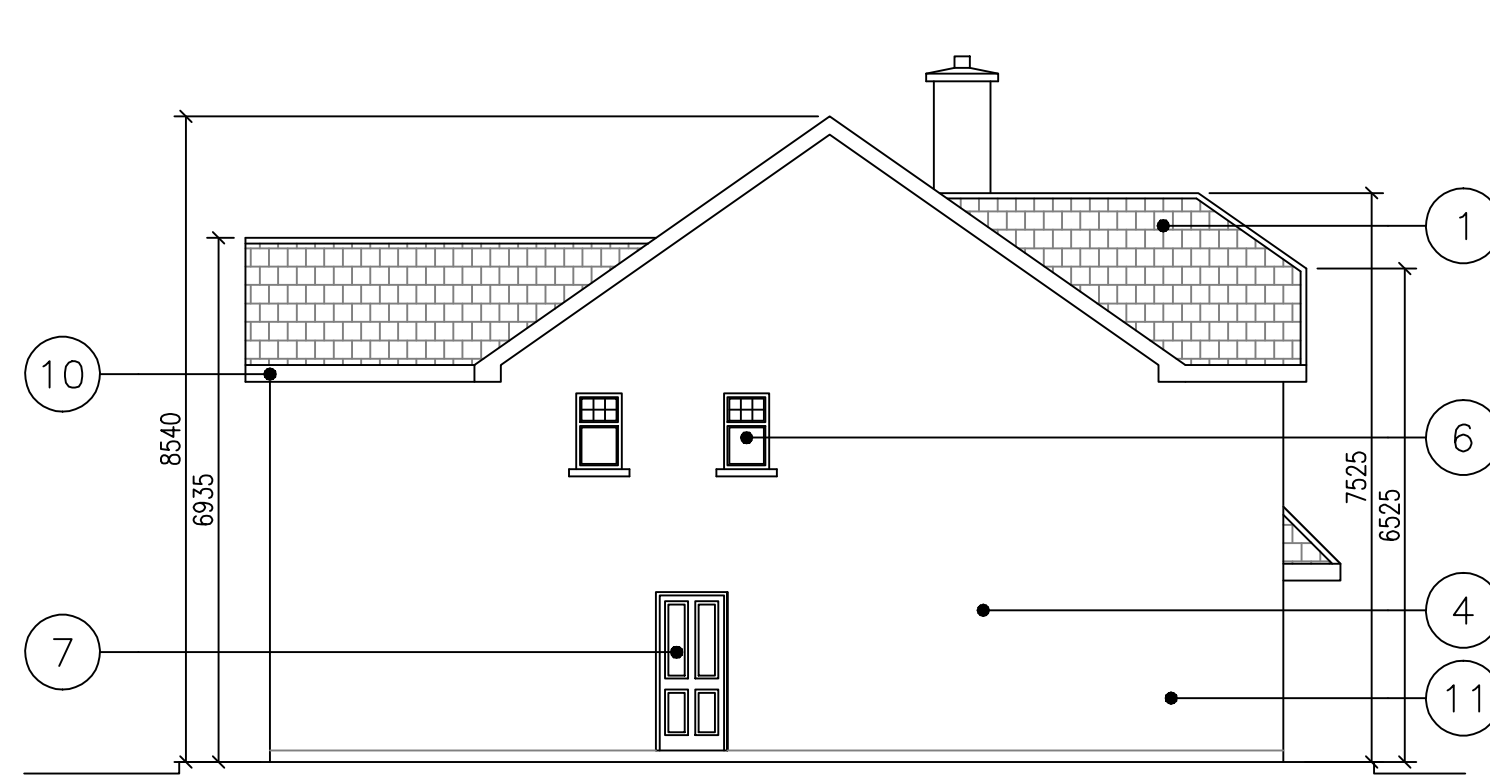
Front Elevation
House Type D



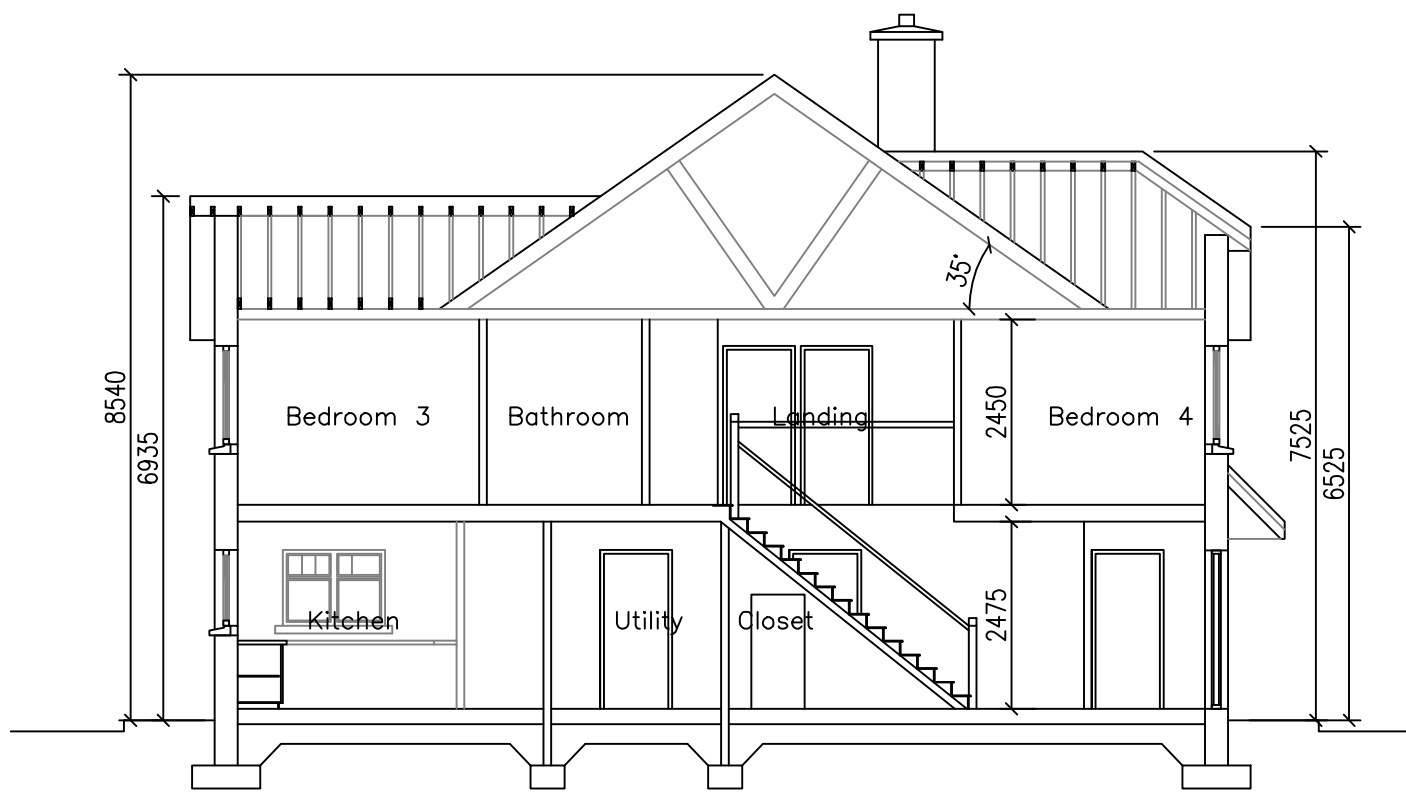
Rear Elevation
House Type D



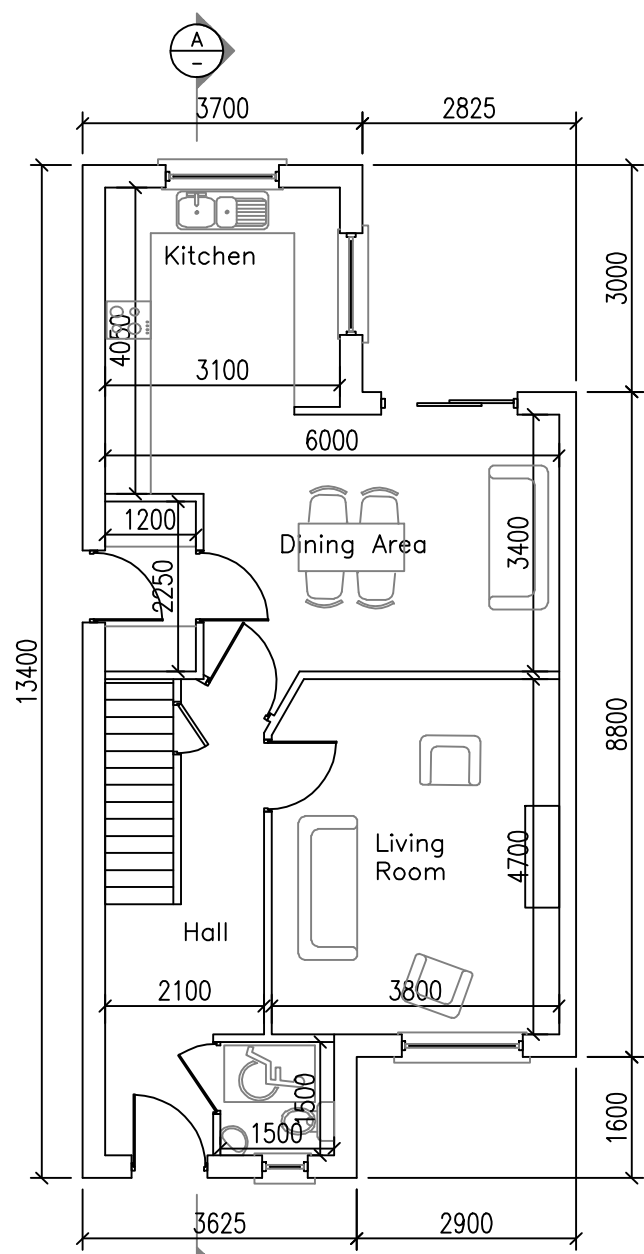
Side Elevation
House Type D



Side Elevation
House Type D

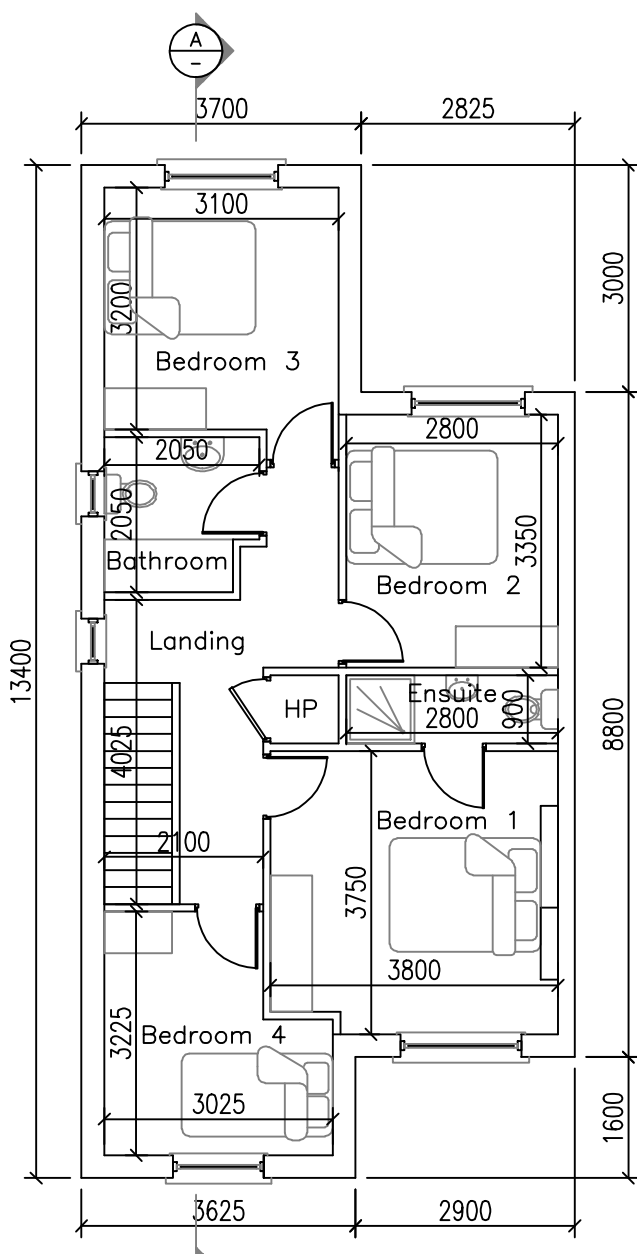


Section A-A
House Type D



Ground Floor Plan

House Type D
Ground Floor Area = 63.3 sqm
Total Floor Area = 126.6 sqm (1362 sq.feet)



First Floor Plan

House Type D
First Floor Area = 63.3 sqm
Total Floor Area = 126.6 sqm (1362 sq.feet)

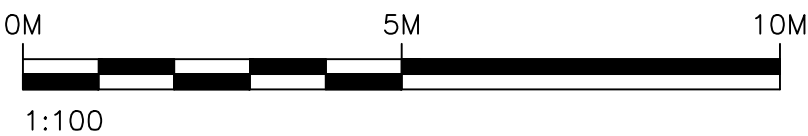
LEGEND

- ① Selected Blue Black Concrete Tile/Slate
- ② Black uPVC Rain Water Goods
- ③ Brick
- ④ Rendered Finish
- ⑤ Approved Ridge Tile
- ⑥ Brown uPVC Woodgrain Windows
- ⑦ Hardwood Back Door
- ⑧ Hardwood Front Door
- ⑨ Brown uPVC Woodgrain Double Patio Door
- ⑩ Brown uPVC Woodgrain Barge Board & Soffit
- ⑪ Plaster banding

PLANNING
DRAWING

General Arrangements

Scale 1:100



Seirbhís Innealltoíreachta Uí Thuama Teoranta

Gort Uí Rathaille
Baile Mhic Ire
Co. Chorcaí

(087) 9481070 021 4877660 jvot@eircom.net

JOB TITLE
Clondrohid Housing
Co. Cork

DRG. TITLE
House Type D
G.A.'s

PLOT DETAILS: 1:100@A1 FILE REF NO: 2007-752
Scales 1:100 Drawn
Date Apr '09 Checked Vincent Twomey
DRAWING NUMBER 2007-752-103 REV. A