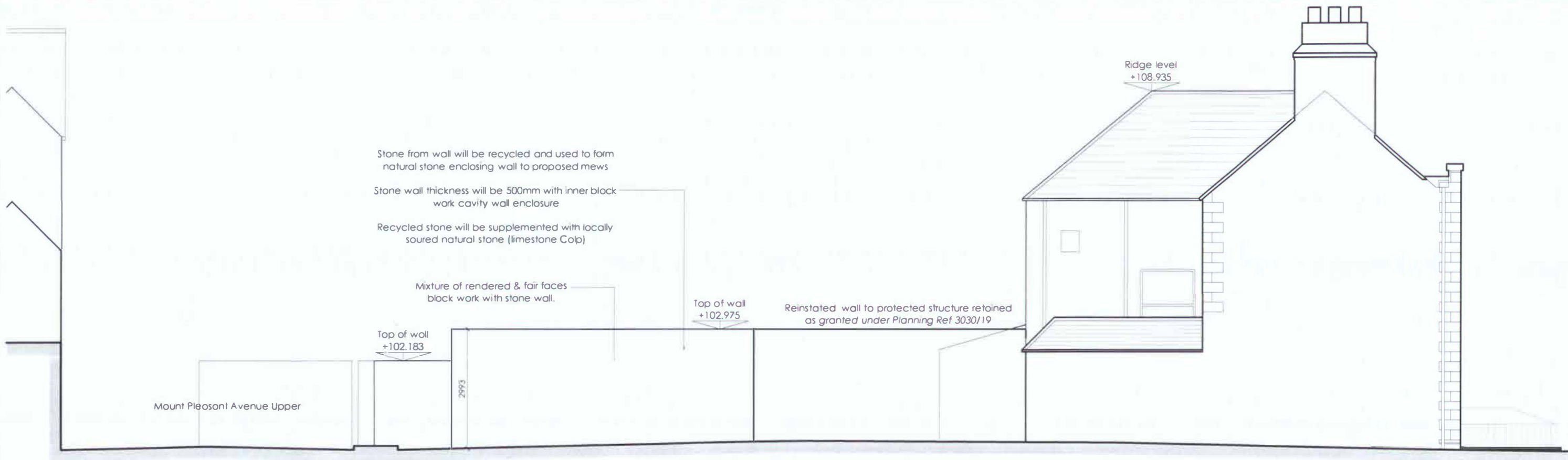


DCC PLAN NO 2919/20  
 RECEIVED: 25 JUN 20

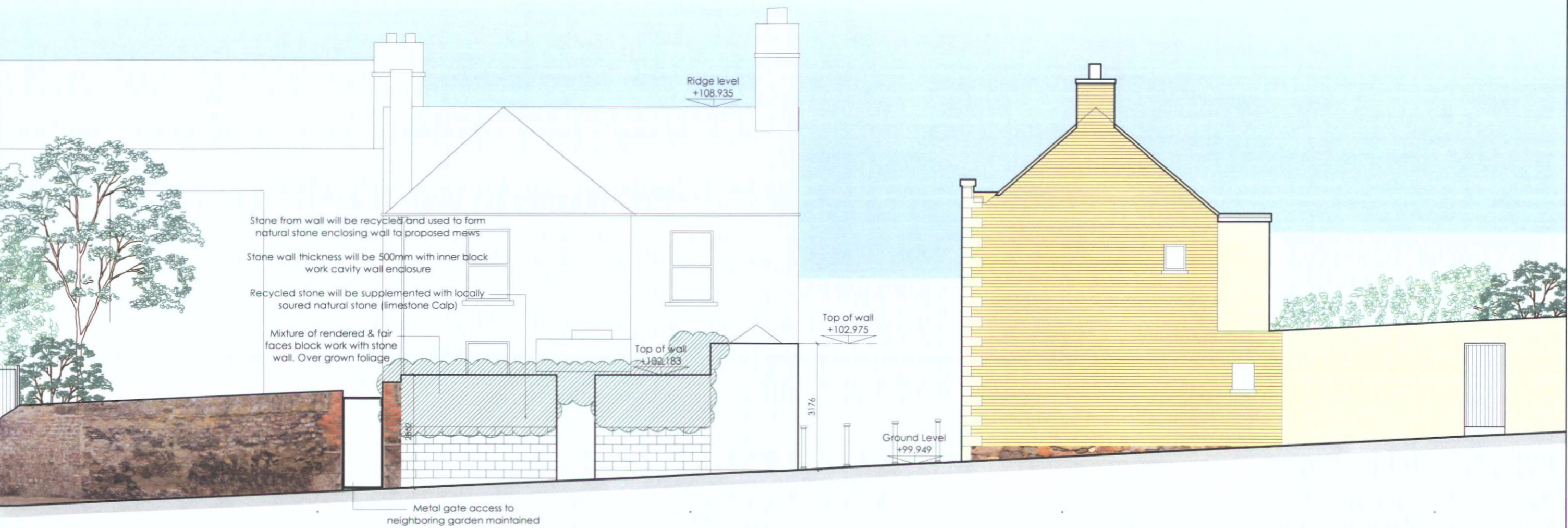


Existing Development 35 Mount Pleasant square

Existing South Elevation (Mount Pleasant Square)  
 Scale 1:100 @ A3

| Rev | Date | Description | Rev | Date | Description | Rev | Date | Description |
|-----|------|-------------|-----|------|-------------|-----|------|-------------|
|-----|------|-------------|-----|------|-------------|-----|------|-------------|

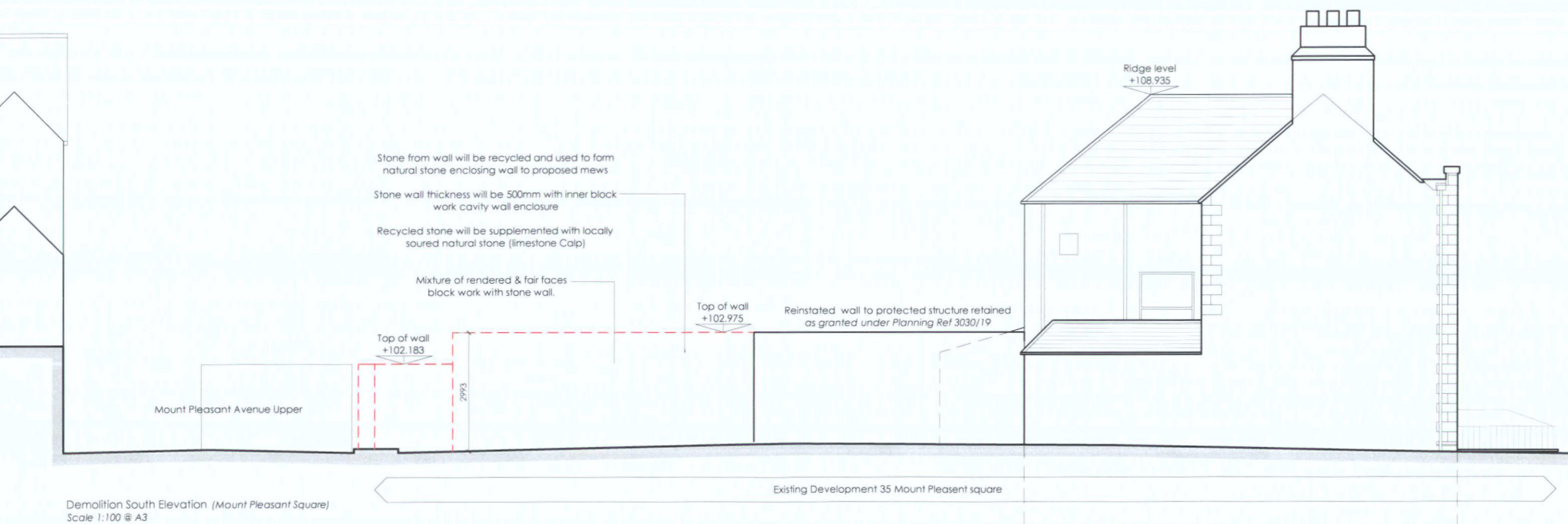
DCC PLAN NO 2919/20  
 RECEIVED: 25 JUN 20



Existing West Elevation (Mount Pleasant Avenue Upper)  
 Scale 1:100 @ A3

Existing building  
 To be demolished

DCC PLAN NO 2919/20  
 RECEIVED: 25 JUN 20

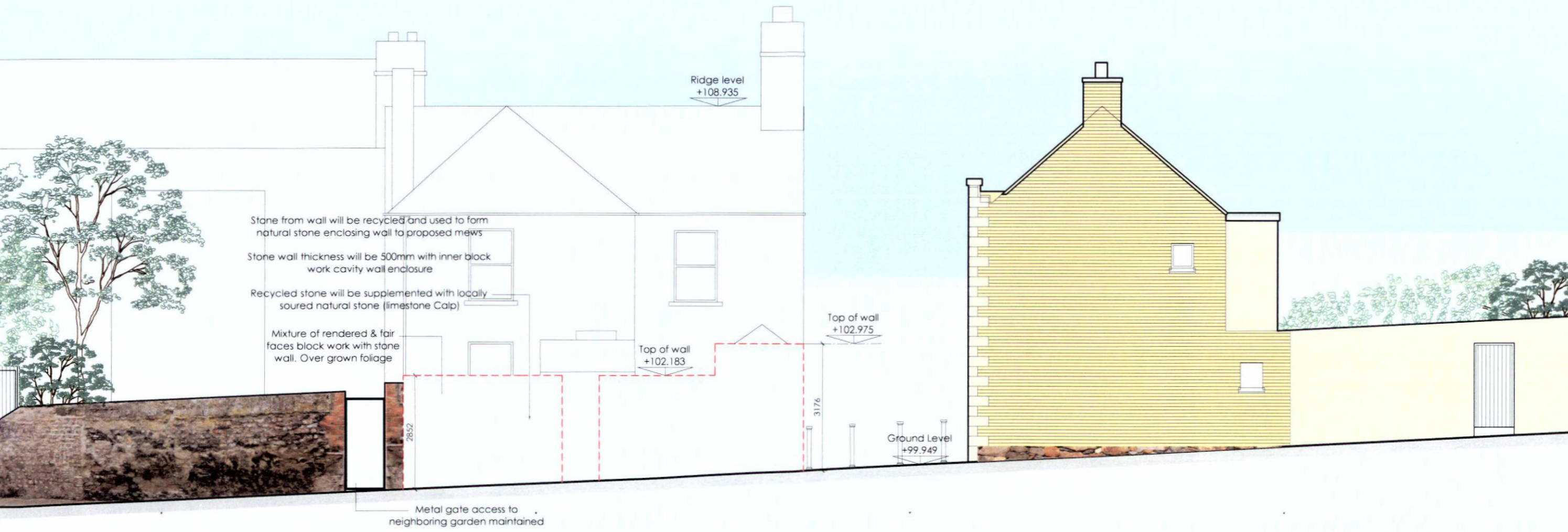


Demolition South Elevation (Mount Pleasant Square)  
 Scale 1:100 @ A3

| Rev | Date | Description | Rev | Date | Description |
|-----|------|-------------|-----|------|-------------|
|-----|------|-------------|-----|------|-------------|

Existing building  
To be demolished

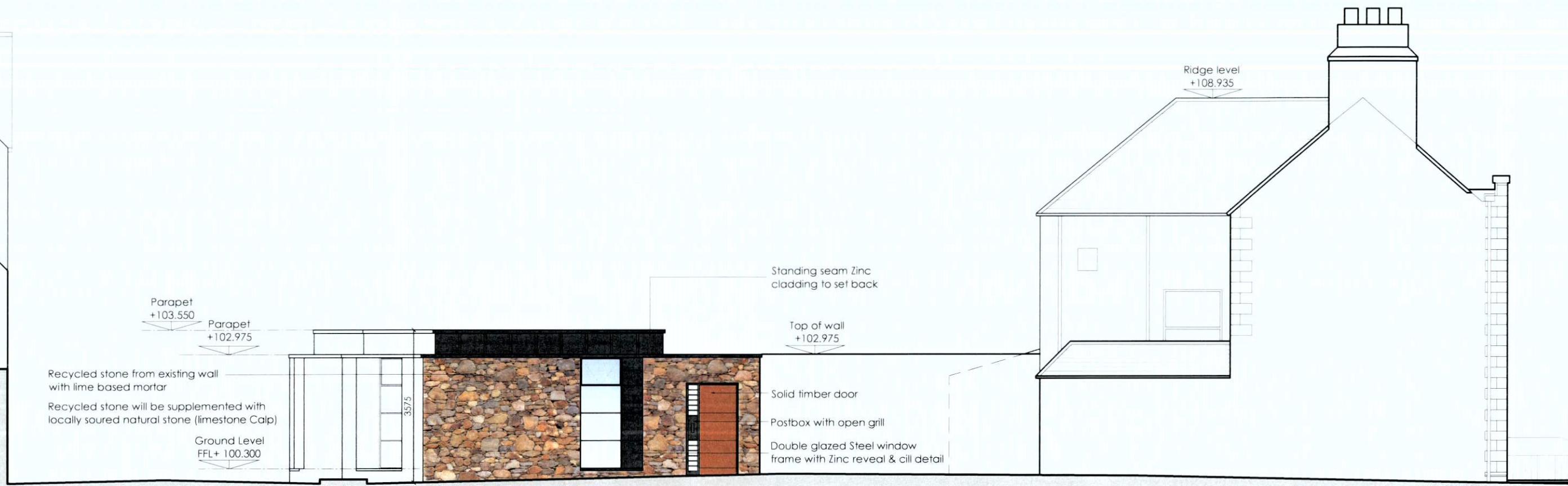
DCC PLAN NO 2919  
RECEIVED: 25 JUN 20



Demolition West Elevation (Mount Pleasant Avenue Upper)  
Scale 1:100 @ A3

| Rev | Date | Description | Rev | Date | Description | Rev | Date | Description |
|-----|------|-------------|-----|------|-------------|-----|------|-------------|
|-----|------|-------------|-----|------|-------------|-----|------|-------------|

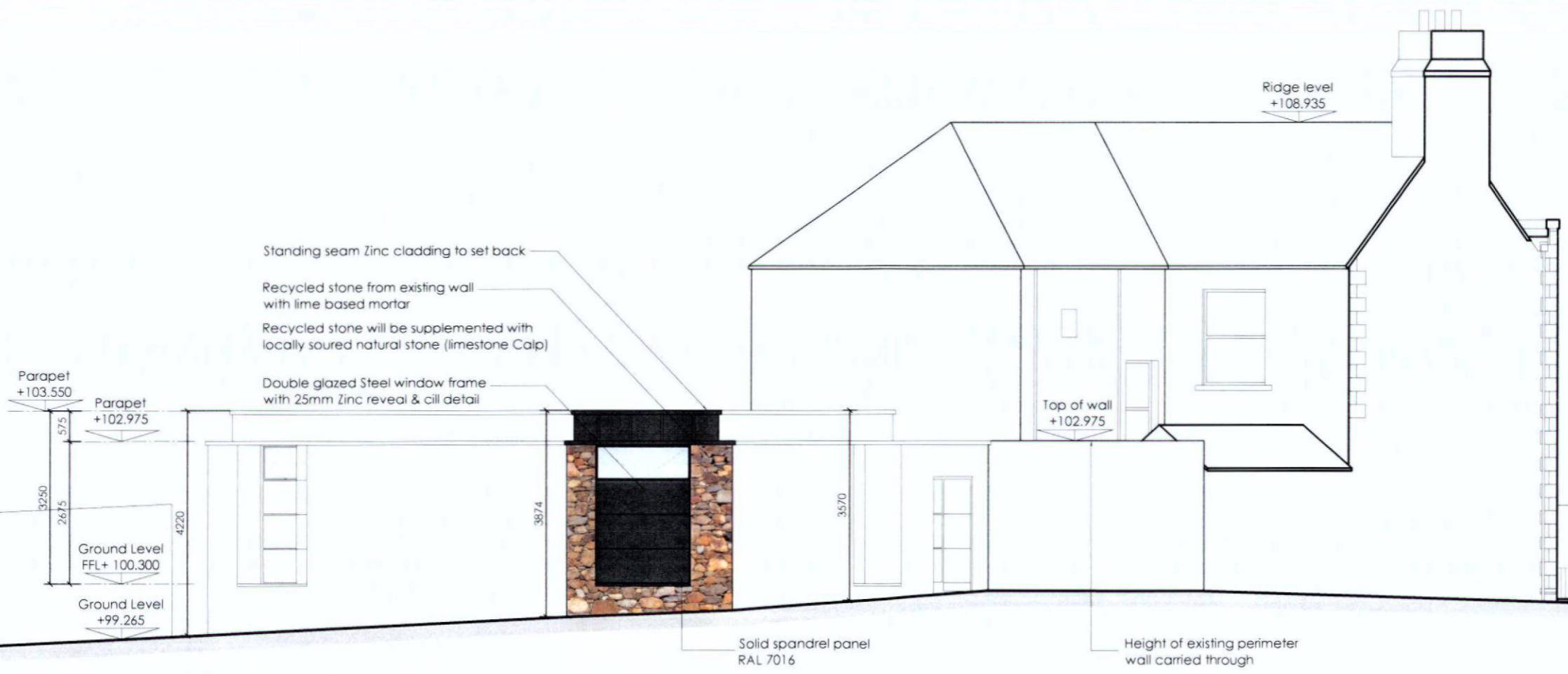
DCC PLAN NO 2919/20  
 RECEIVED: 25 JUN 20



Proposed South Elevation (Mount Pleasant Square)  
 Scale 1:100 @ A3

| Rev | Date | Description | Rev | Date | Description |
|-----|------|-------------|-----|------|-------------|
|-----|------|-------------|-----|------|-------------|

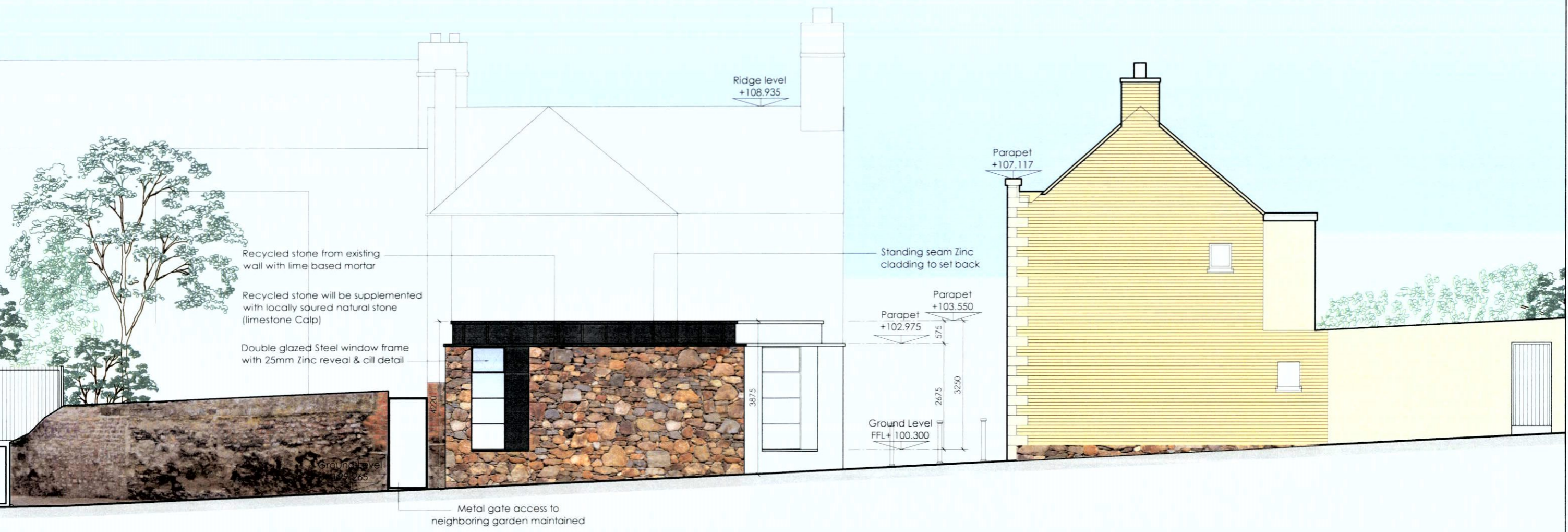
DCR PLAN NO 2919/20  
 RECEIVED: 25 JUN 20



Proposed South West Elevation (Mount Pleasant Square)  
 Scale 1:100 @ A3

| Rev | Date | Description | Rev | Date | Description | Rev | Date | Description |
|-----|------|-------------|-----|------|-------------|-----|------|-------------|
|-----|------|-------------|-----|------|-------------|-----|------|-------------|

DCC PLAN NO 2919/20  
 RECEIVED: 25 JUN 20



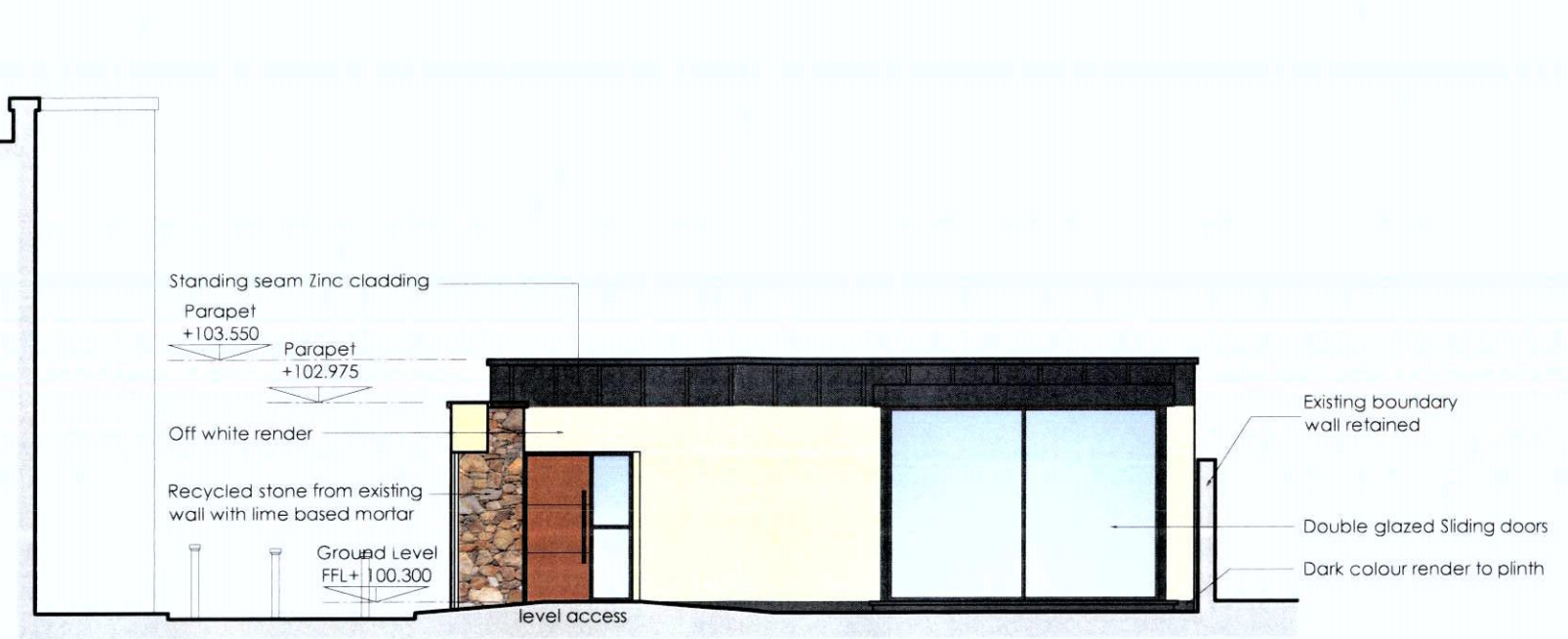
Recycled stone from existing wall with lime based mortar  
 Recycled stone will be supplemented with locally sourced natural stone (limestone Calp)  
 Double glazed Steel window frame with 25mm Zinc reveal & cill detail

Standing seam Zinc cladding to set back

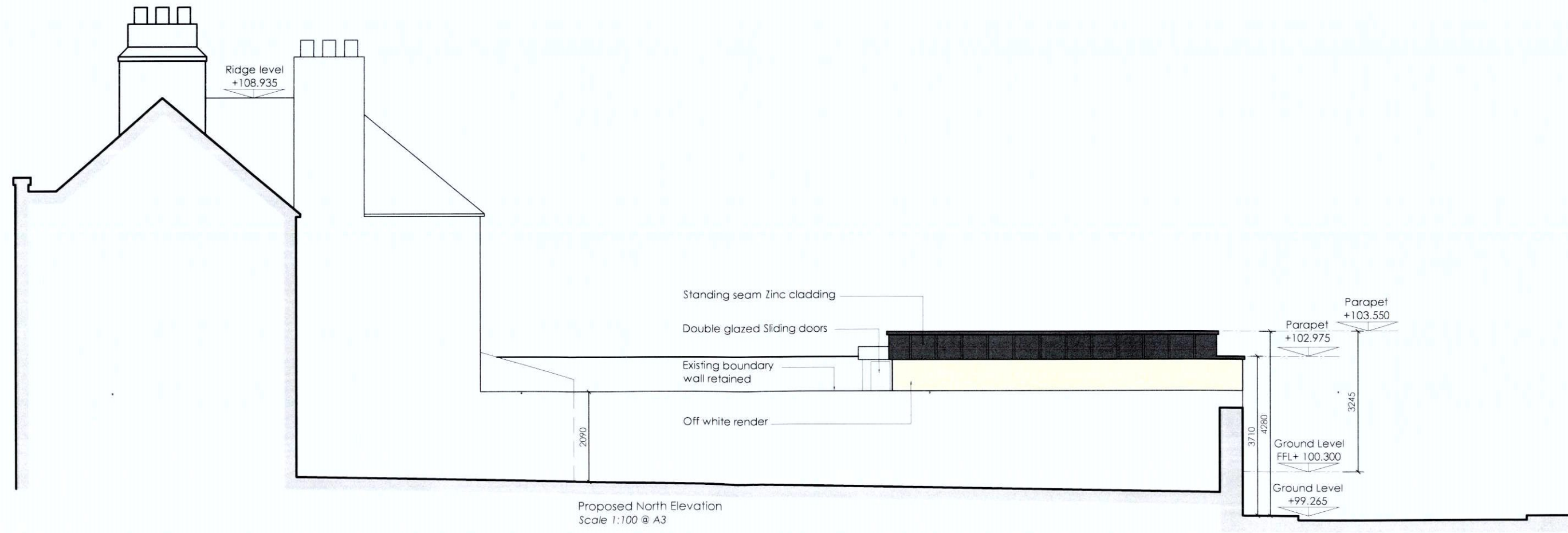
Proposed West Elevation (Mount Pleasant Avenue Upper)  
 Scale 1:100 @ A3

| Rev | Date | Description | Rev | Date | Description |
|-----|------|-------------|-----|------|-------------|
|-----|------|-------------|-----|------|-------------|

DCC PLAN NO 2919/20  
RECEIVED: 25 JUN 20



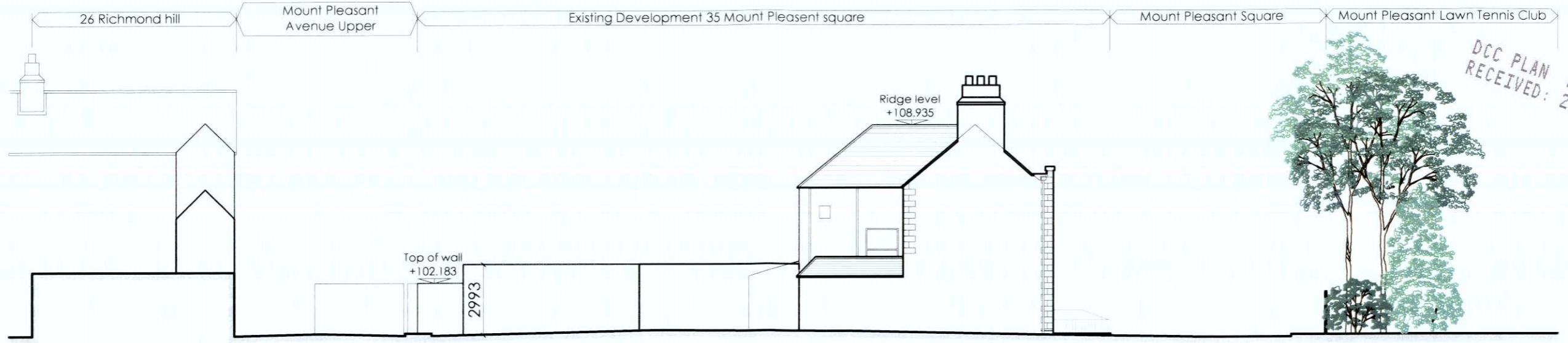
Proposed East Elevation (Courtyard)  
Scale 1:100 @ A3



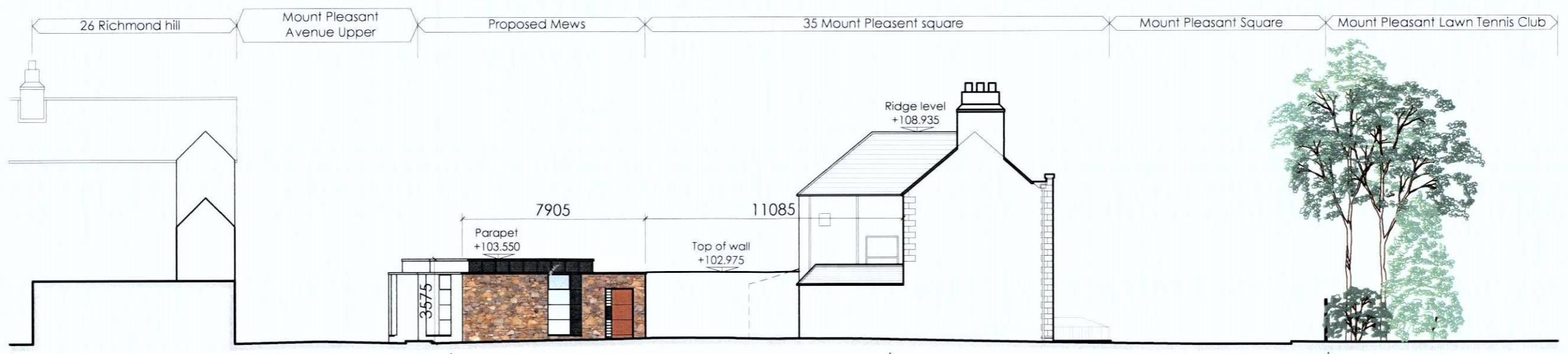
Proposed North Elevation  
Scale 1:100 @ A3



| Rev | Date | Description | Rev | Date | Description | Rev | Date | Description |
|-----|------|-------------|-----|------|-------------|-----|------|-------------|
|-----|------|-------------|-----|------|-------------|-----|------|-------------|

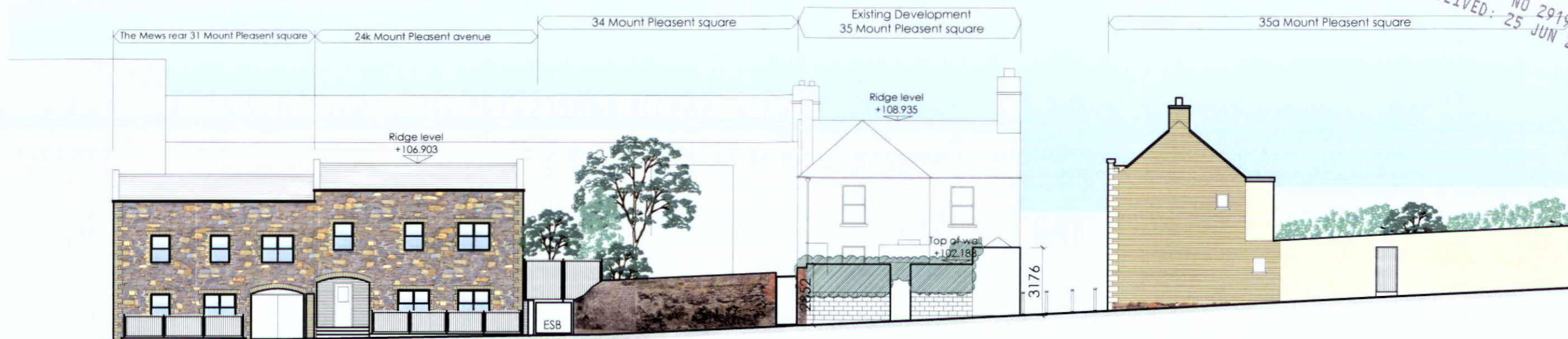


Existing South Elevation (Mount Pleasant Square)  
Scale 1:200 @ A3

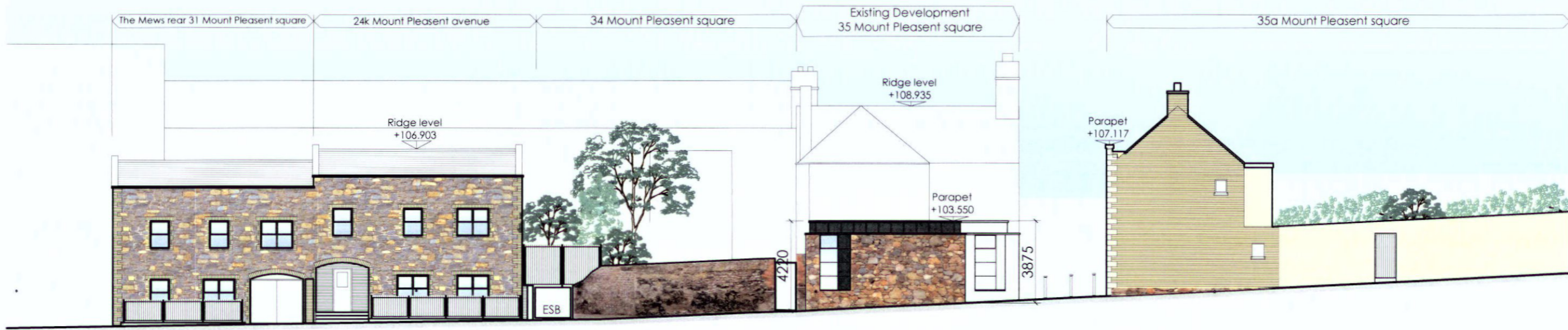


Proposed South Elevation (Mount Pleasant Square)  
Scale 1:200 @ A3

DCC PLAN NO 2919/20  
RECEIVED: 25 JUN 20



Existing West Elevation (Mount Pleasant Avenue Upper)  
Scale 1:200 @ A3



Proposed West Elevation (Mount Pleasant Avenue Upper)  
Scale 1:200 @ A3