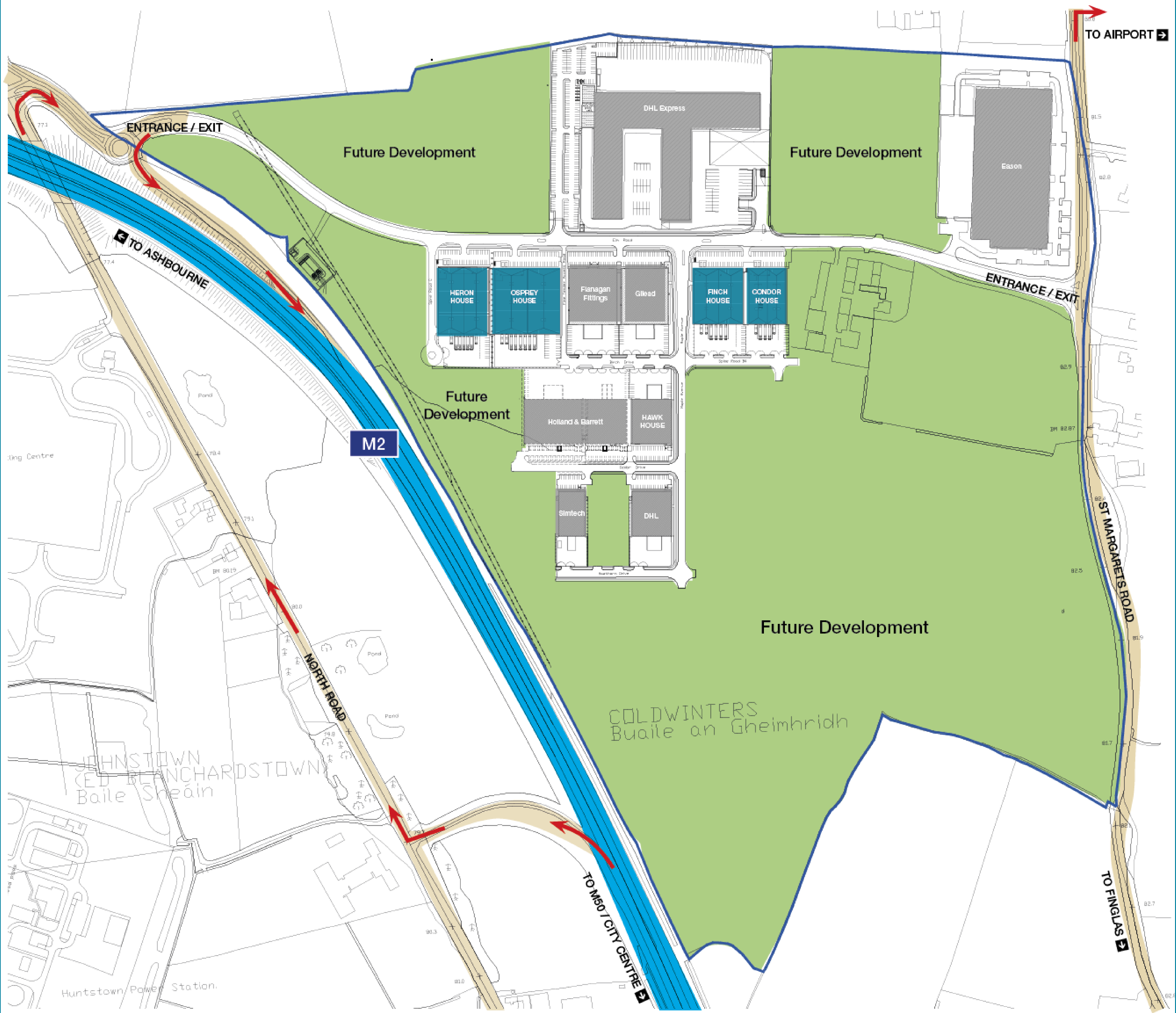


# Aerial View





# Park Layout



NOT TO SCALE – FOR IDENTIFICATION PURPOSES ONLY

## Schedule of Approximate Gross External Floor Areas

OSPREY HOUSE	sq.m.	sq.ft.
Warehouse	4,941	53,184
Ground Floor Office	251	2,702
First Floor Office	289	3,111
<b>Total</b>	<b>5,481</b>	<b>58,997</b>

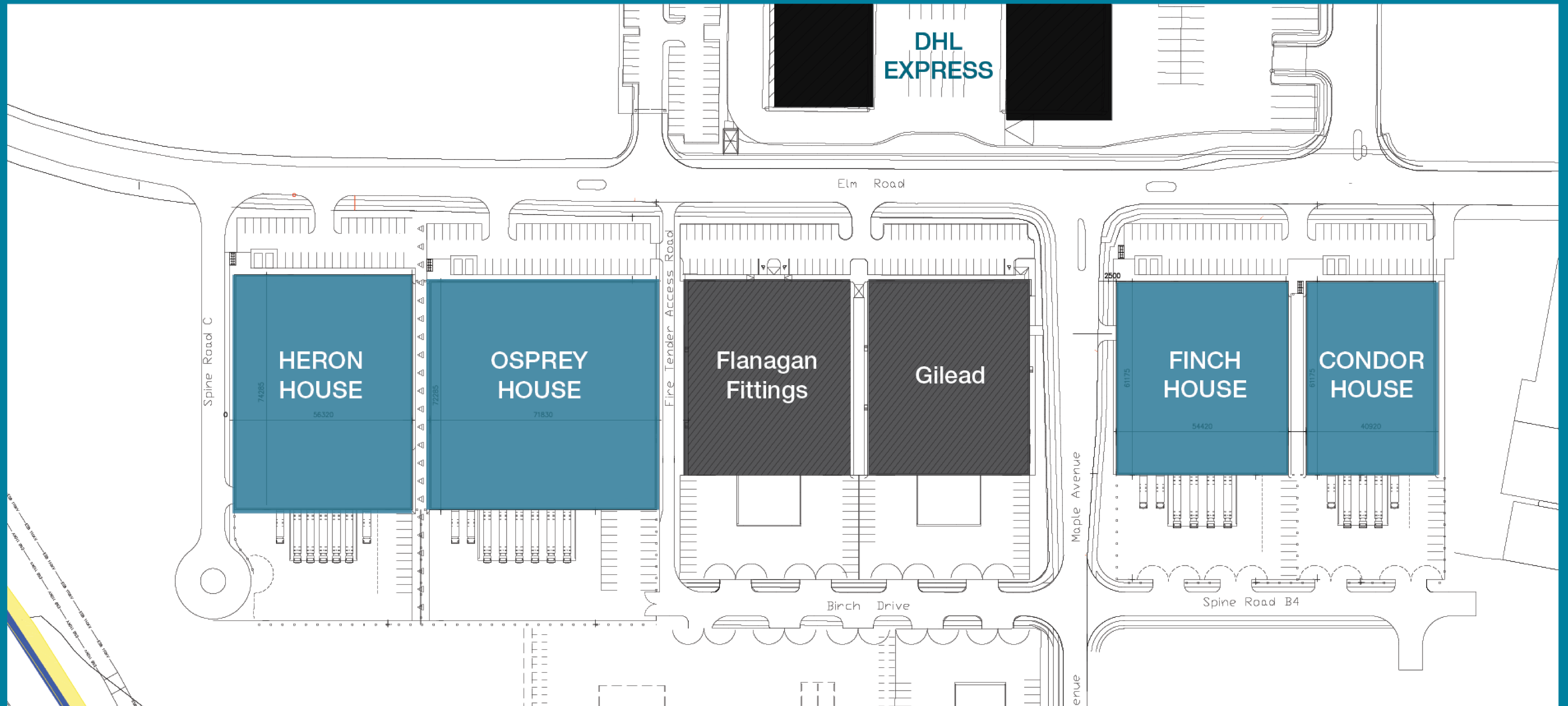
HERON HOUSE	sq.m.	sq.ft.
Warehouse	4,091	44,035
Ground Floor Office	74	797
First Floor Office	365	3,929
<b>Total</b>	<b>4,530</b>	<b>48,761</b>

FINCH HOUSE	sq.m.	sq.ft.
Warehouse	3,235	34,821
Ground Floor Office	74	797
First Floor Office	280	3,014
<b>Total</b>	<b>3,589</b>	<b>38,632</b>

CONDOR HOUSE	sq.m.	sq.ft.
Warehouse	2,428	26,135
Ground Floor Office	74	797
First Floor Office	216	2,325
<b>Total</b>	<b>2,718</b>	<b>29,256</b>



# New Opportunities

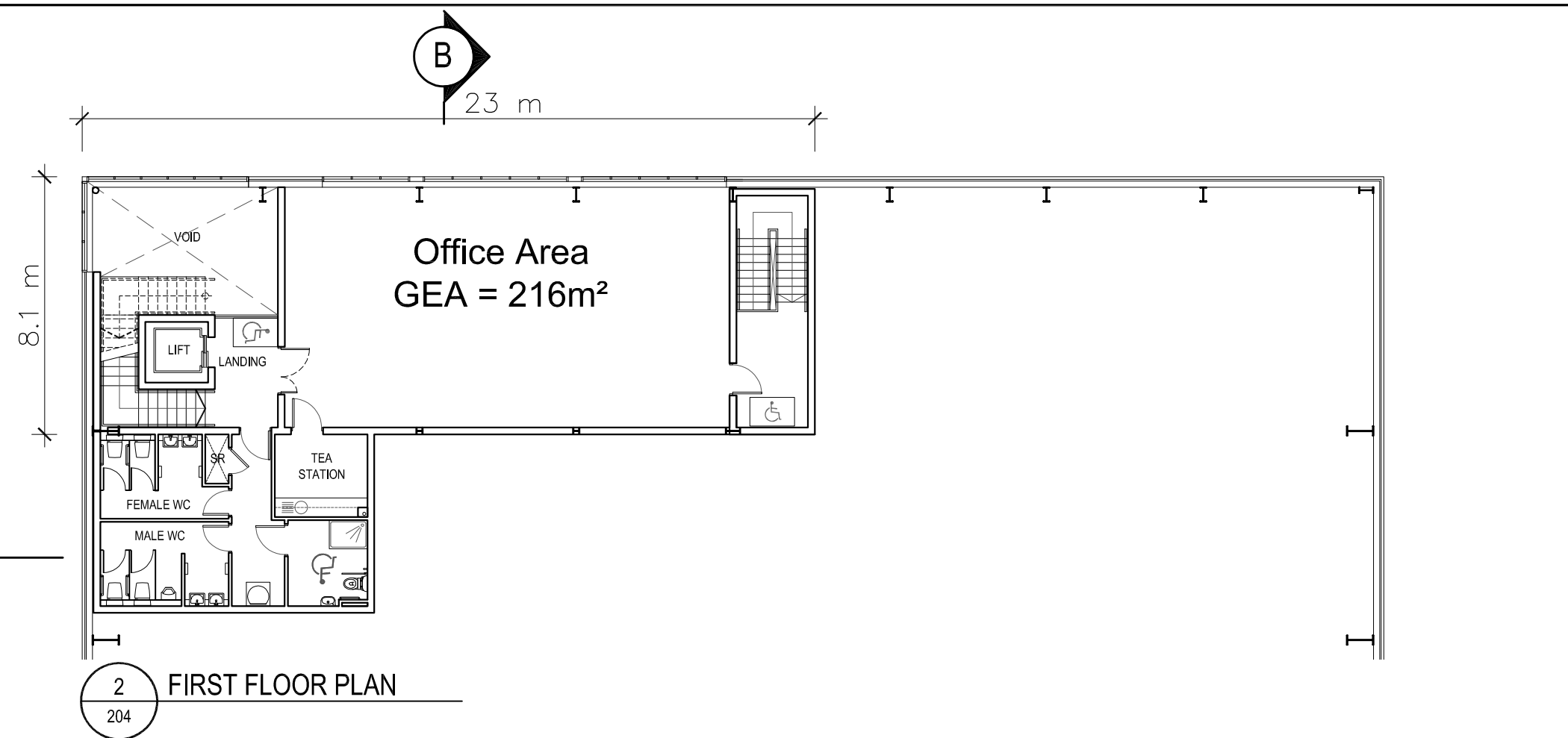


NOT TO SCALE – FOR IDENTIFICATION PURPOSES ONLY



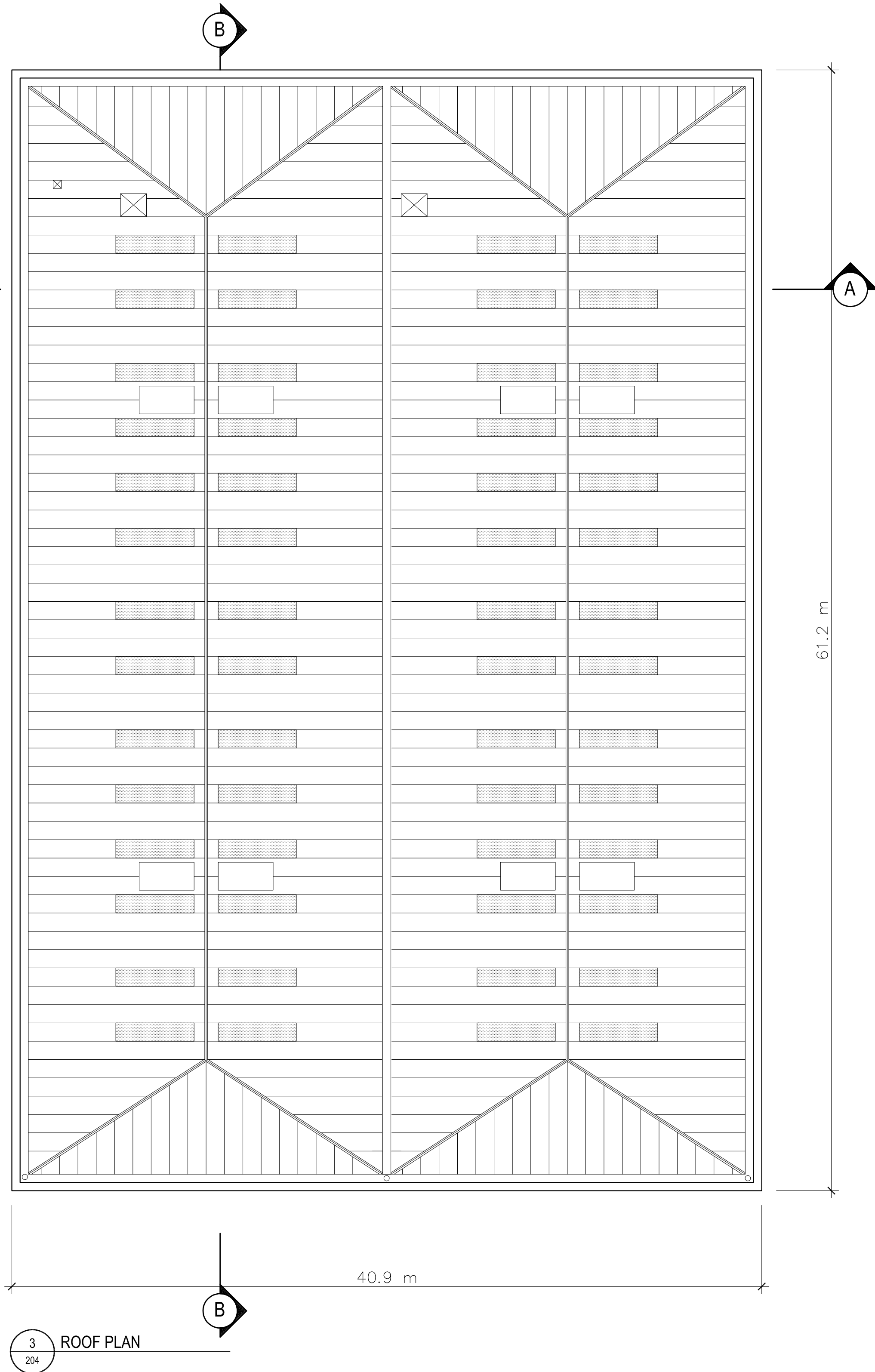
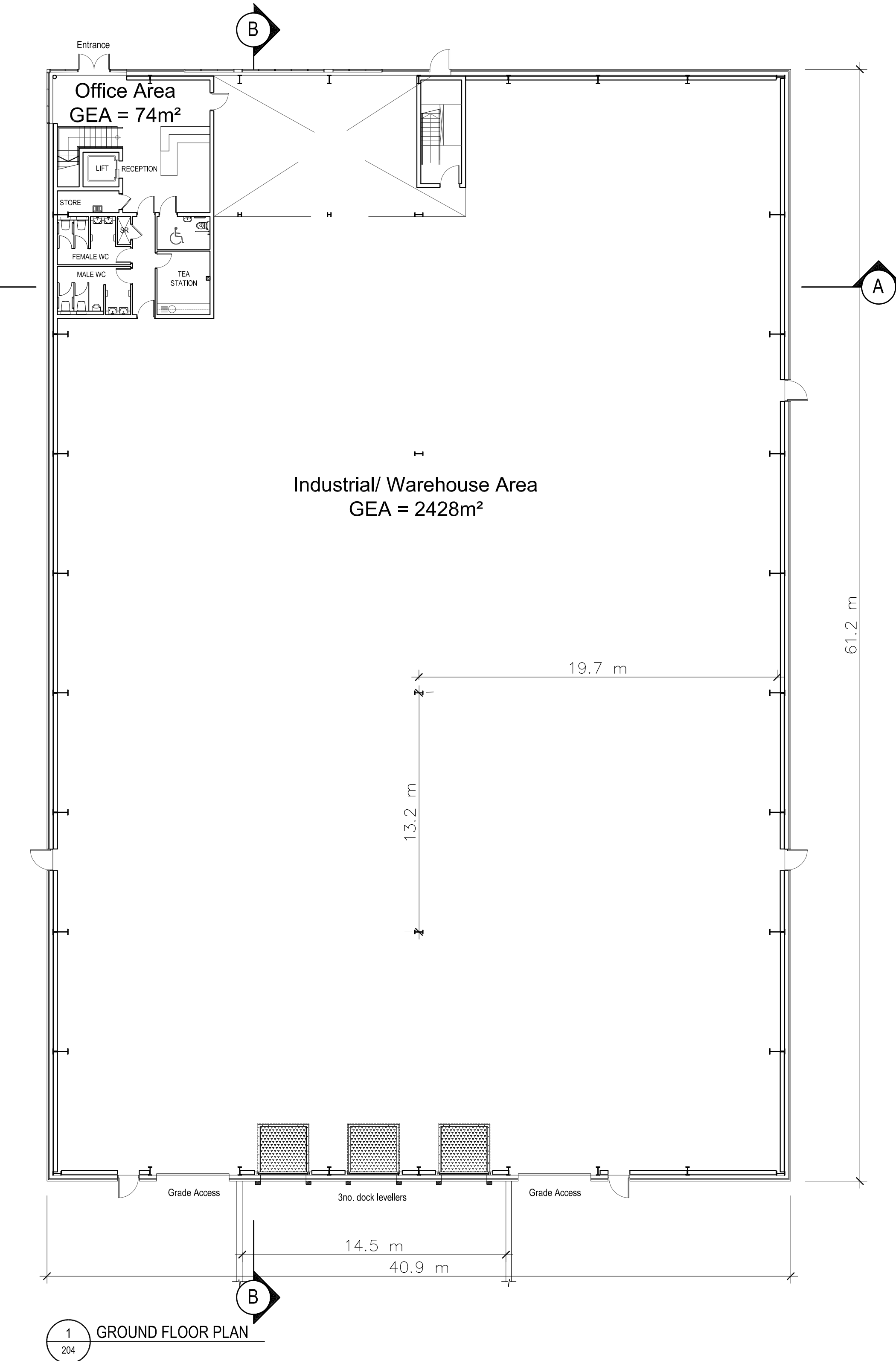
Dublin **AirPort**   
**Logistics Park**  
[www.dublinairportlogisticspark.com](http://www.dublinairportlogisticspark.com)

**ROHAN**   
Tel: + 353 1 662 4455  
[www.rohanholdings.ie](http://www.rohanholdings.ie)



Schedule of Approximate Gross External Floor Areas (GEA)	
Warehouse	2428
Office (Ground)	74
Office (First)	216
Total	2718 sq.m (GEA)

SUBJECT TO CONTRACT/  
CONTRACT DENIED  
FOR INFORMATION PURPOSES  
ONLY. MEASUREMENTS ARE  
APPROXIMATE.



DUBLIN AIRPORT LOGISTICS PARK - CONDOR HOUSE - PLANS

DEVELOPED BY:



**Rohan Holdings Limited**  
4th Floor, Block 2, Harcourt Centre,  
Harcourt Street, Dublin 2.  
T:(0)1 662 4455 E:info@rohanholdings.ie  
W:www.rohanholdings.ie

AGENT:

**Savills Dublin Commercial**  
33 Molesworth Street  
Dublin 2  
T:+353 (0) 1 618 1300  
E: industrial1234@savills.ie  
W: www.savills.ie



49 Upper Mount Street  
Dublin 2, Ireland  
T: +353 1 703 7800  
M: +353 866005670  
W: www.totarch.ie  
E: info@totarch.ie

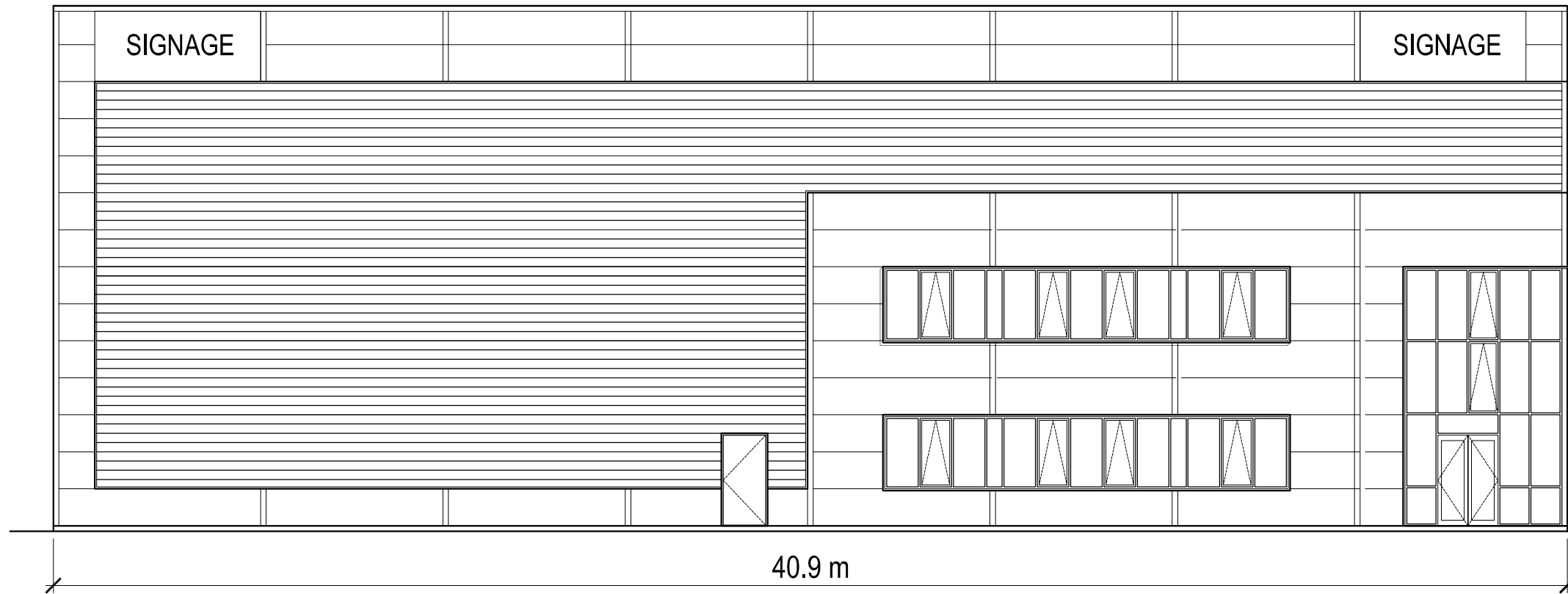
PROJECT:  
**ROHAN HOLDINGS  
DUBLIN AIRPORT LOGISTICS PARK**

STAGE:  
**MARKETING**

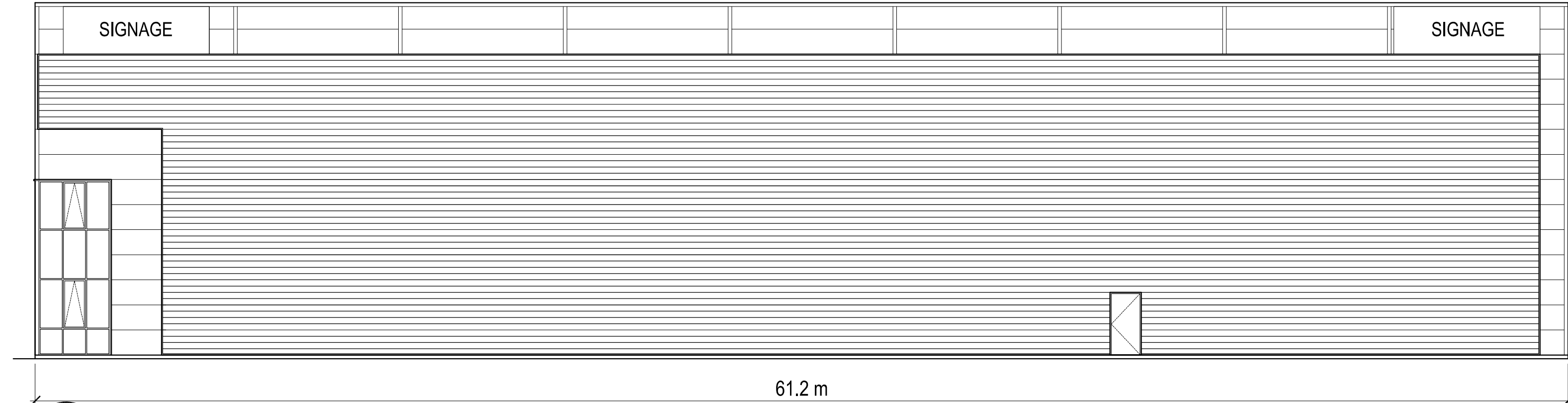
DRAWING TITLE:  
**CONDOR HOUSE  
FLOOR & ROOF PLANS**

DATE: JANUARY 2016  
SCALE: 1:200  
DRAWN: NW  
CHECKED: DS  
JOB NO: 1574  
FILE NAME:  
DRAWING NO:  
**P-204**  
SHEET SIZE: A1L  
REVISION: \*

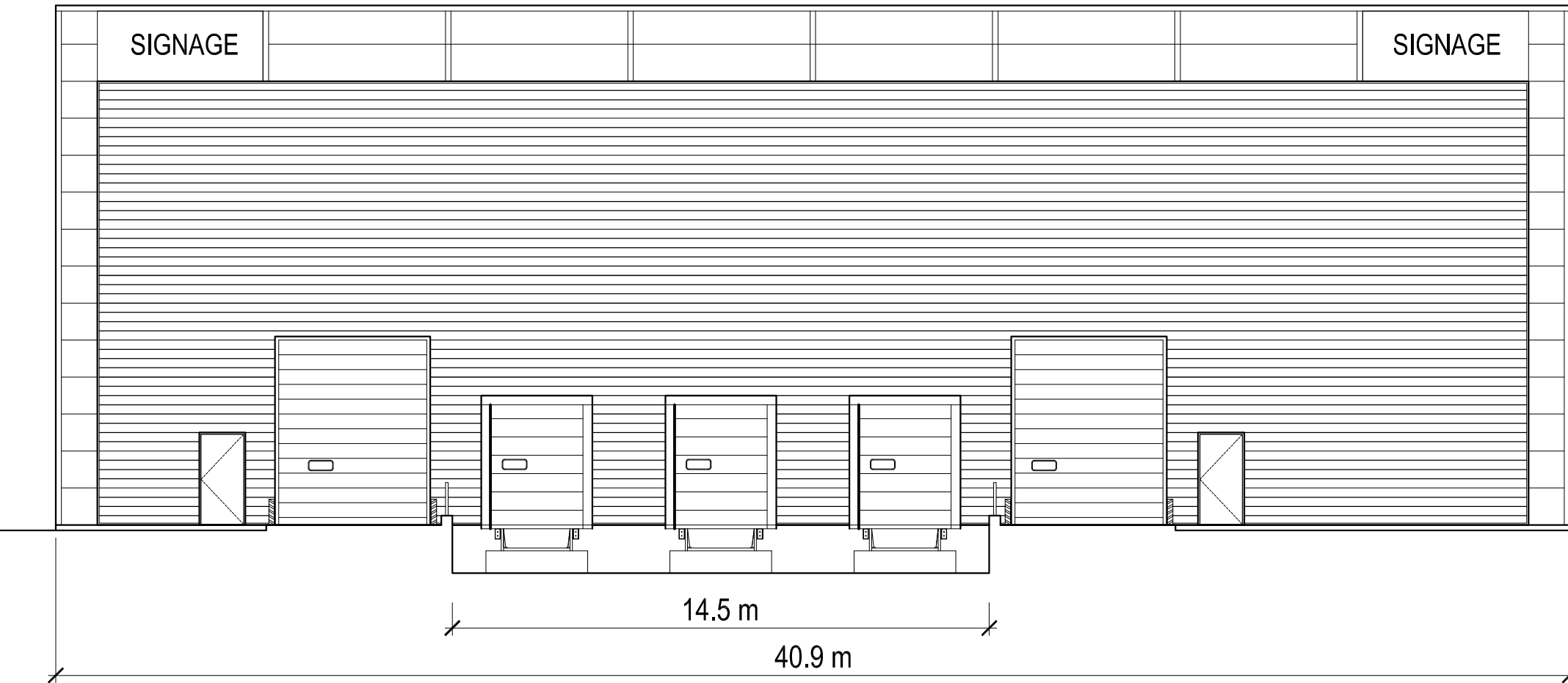




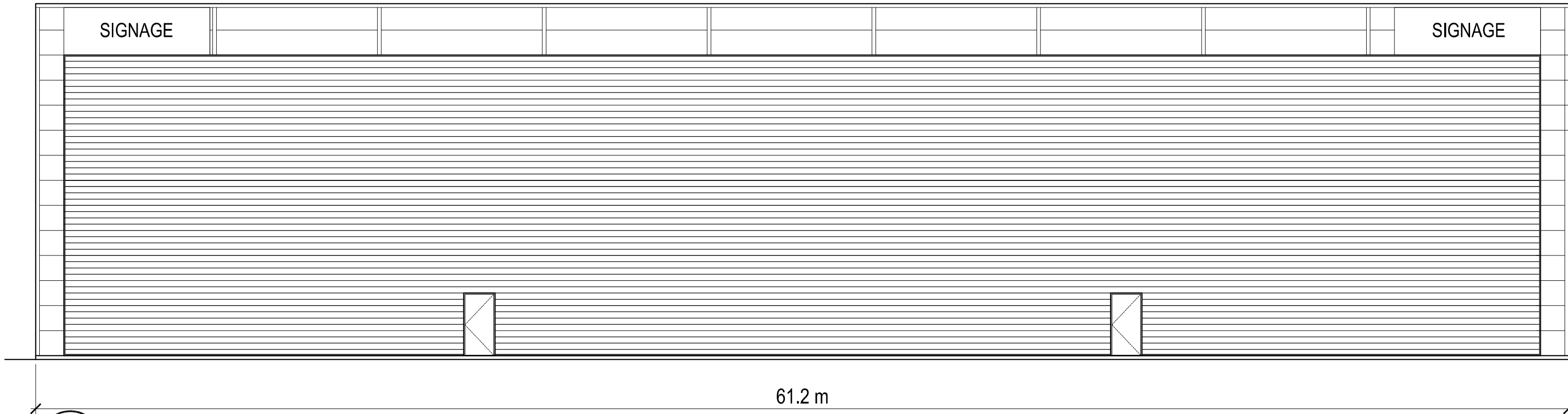
1 Front Elevation (North)



2 Side Elevation (West)



3 Rear Elevation (South)



4 Side Elevation (East)

DUBLIN AIRPORT LOGISTICS PARK - CONDOR HOUSE - ELEVATIONS

SUBJECT TO CONTRACT/  
CONTRACT DENIED  
FOR INFORMATION PURPOSES  
ONLY. MEASUREMENTS ARE  
APPROXIMATE.

DEVELOPED BY:  
**ROHAN**  
Rohan Holdings Limited  
4th Floor, Block 2, Harcourt Centre,  
Harcourt Street, Dublin 2.  
T:(0)1 662 4455 E:info@rohanholdings.ie  
W:www.rohanholdings.ie

AGENT:  
**savills**  
Savills Dublin Commercial  
33 Molesworth Street  
Dublin 2  
T:+353 (0) 1 618 1300  
E: industrial1234@savills.ie  
W: www.savills.ie

**TOTP Architects**  
The O'Toole Partnership  
49 Upper Mount Street  
Dublin 2, Ireland  
T: +353 1 703 7800  
M: +353 866005670  
W: www.totarch.ie  
E: info@totarch.ie

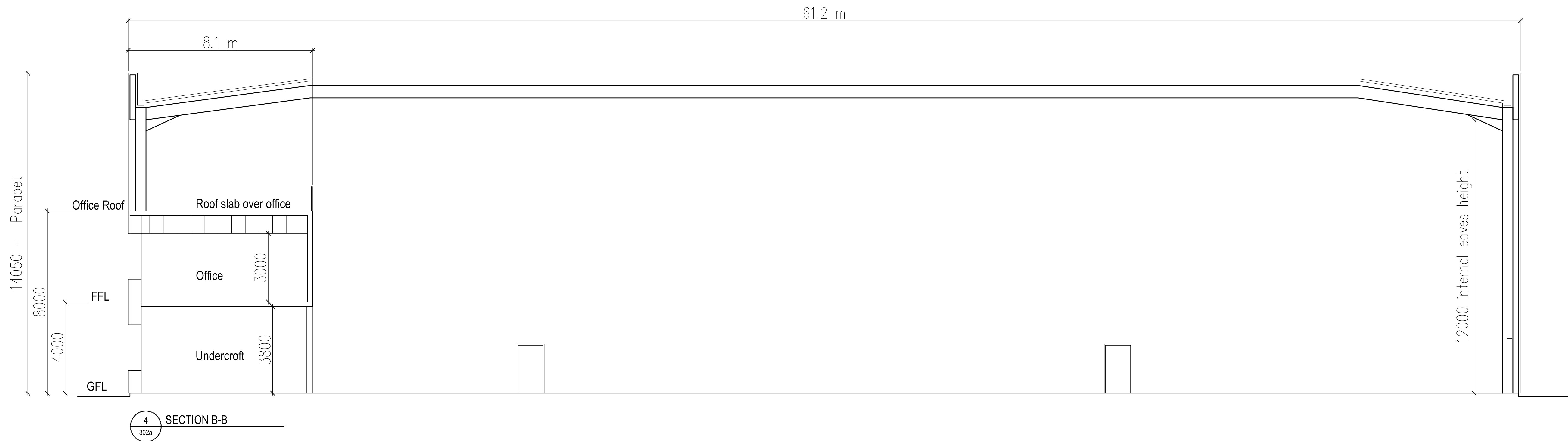
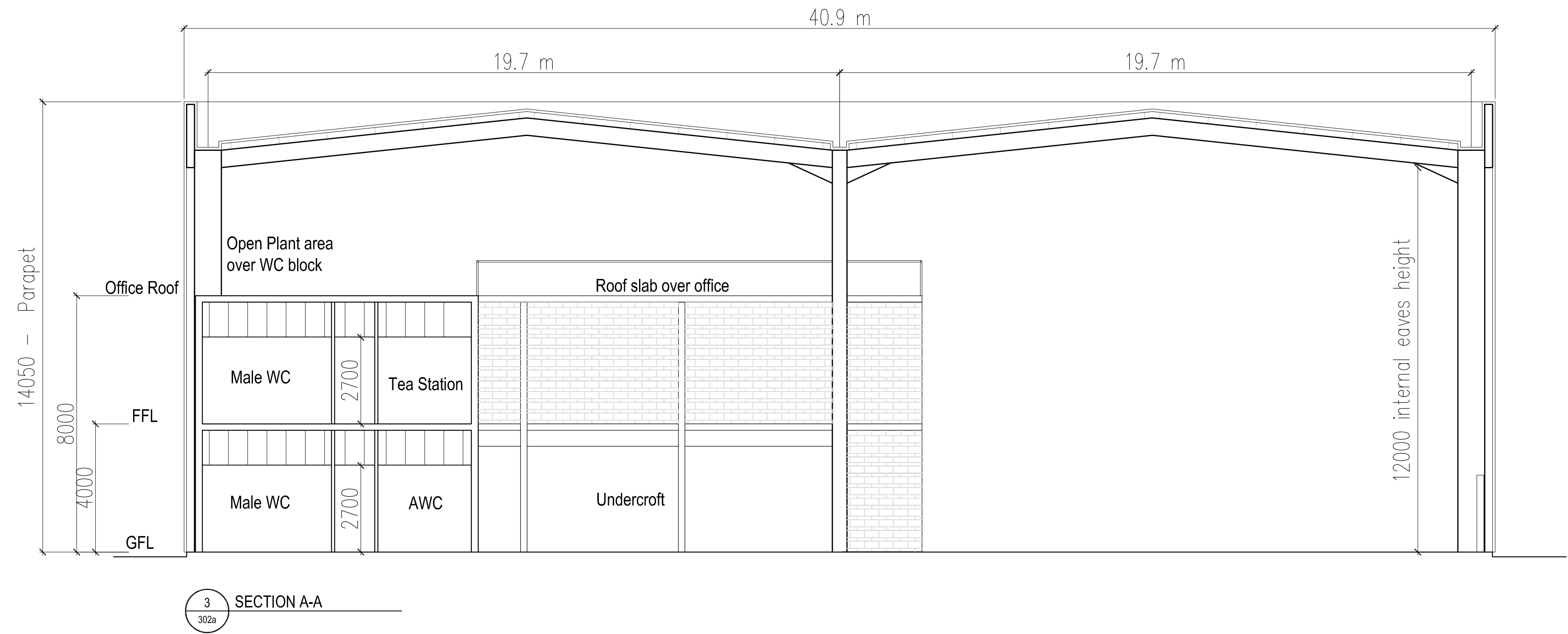
PROJECT:  
ROHAN HOLDINGS  
DUBLIN AIRPORT LOGISTICS PARK

STAGE:  
MARKETING

DRAWING TITLE:  
CONDOR HOUSE  
ELEVATIONS

DATE:	JANUARY 2016	DRAWING NO:	
SCALE:	ms		P-404
DRAWN:	NW		
CHECKED:	DS	SHEET SIZE:	REVISION:
JOB NO:	1574		A1L   *
FILE NAME:			

SUBJECT TO CONTRACT/  
CONTRACT DENIED  
FOR INFORMATION PURPOSES  
ONLY. MEASUREMENTS ARE  
APPROXIMATE



DEVELOPED BY:



**Rohan Holdings Limited**  
4th Floor, Block 2, Harcourt Centre,  
Harcourt Street, Dublin 2.

T: (0)1 662 4455 E: info@rohanholdings.ie  
W: www.rohanholdings.ie

AGENT:

**Savills Dublin Commercial**  
33 Molesworth Street  
Dublin 2  
T: +353 (0) 1 618 1300  
E: industrial1234@savills.ie  
W: www.savills.ie



49 Upper Mount Street  
Dublin 2, Ireland T: +353 1 703 7800 W: www.totarch.ie  
M: +353 866005670 E: info@totarch.ie

PROJECT:  
**ROHAN HOLDINGS  
DUBLIN AIRPORT LOGISTICS PARK**

STAGE:  
**MARKETING**

DRAWING TITLE:  
**CONDOR HOUSE  
SECTIONS**

DATE:	JANUARY 2016	DRAWING NO:	
SCALE:	1:100		<b>P-302a</b>
DRAWN:	NW		
CHECKED:	DS	SHEET SIZE:	REVISION:
JOB NO:	1574		<b>A1L</b>   *
FILE NAME:			

## DUBLIN AIRPORT LOGISTICS PARK - CONDOR HOUSE - SECTIONS