

REA

EOIN DILLON



LAND FOR SALE
15.77 Hectares (39 Acres)

FOR SALE BY PRIVATE TREATY

Bollingbrook
Dolla
Nenagh
County Tipperary

AMV €75,000



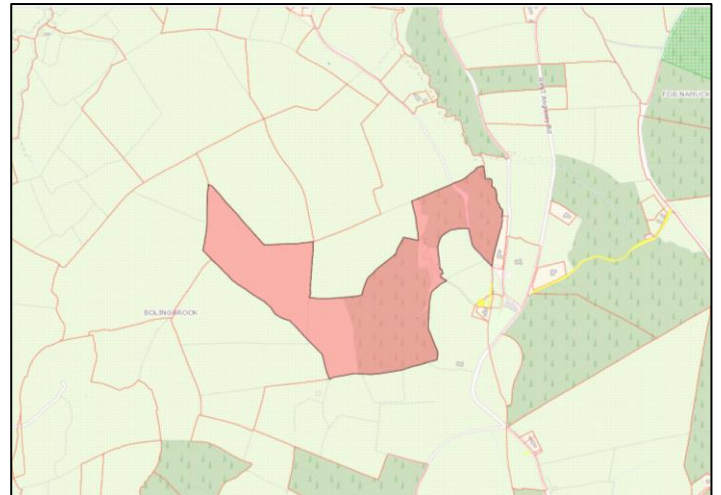
DESCRIPTION

c. 15.77Ha (39 acres) of lands in Bollingbrook, Dolla overlooking the Silvermines mountains and Lough Derg.

These lands are a combination of forestry and rough grazing.

We understand the lands are all located within a designated S.A.C Hen Harrier area and may be eligible for various EU support schemes.

These lands contain ruins of a house and have good road frontage which may lead to residence potential subject to planning permission.



VIEWING

By Appointment only:

Negotiator: Enda Clifford or Eoin Dillon
42 Kenyon St. Nenagh, Co. Tipperary

T: 067 33468

E: info@readillon.ie

W: www.readillon.ie PSRA: 001790

Conditions to be noted:

The terms set out herein are by way of partial summary. Intending purchasers should obtain a copy of the Conditions of Sale where the matters are dealt with comprehensively. Particulars and Conditions of sale are available from the Agents and the Solicitors with carriage of sale. REA Dillon for themselves and for the vendors whose agents they are, give notice that: 1) The particulars are set out in this Brochure and Schedule as a general outline for the guidance of intending purchasers and do not constitute part of an offer or contract. 2) All descriptions, dimensions, references to condition and necessary permissions for the use and occupation and other details are given in good faith and are believed to be correct but any intending purchasers should not rely on them as statements or representations of fact but must satisfy themselves by inspection or otherwise as to the correctness of each of them. 3) No person in the employment of REA Dillon has any authority to make representations or warranty whatsoever in relation to this property. All prices quoted are exclusive of VAT

DIRECTIONS

From Dolla, take the Tipperary Road (R497) for 2.9 km. Veer right and continue for 6.8 km and take the left turn at Curreeny Cross roads (sign post for Templeberry). Lands are immediately on your right hand side, indicated by our for sale sign.

For more photos of this property please go to our website www.readillon.ie.

You can also view this property at www.myhome.ie & www.daft.ie.