

For Sale

Asking Price: €1,175,000



1 Beech Park Drive Foxrock
Dublin 18 D18 XA70

sherryfitz.ie - make and view offers 24/7





24 HOUR ACCESS



SEARCH



BOOK VIEWINGS



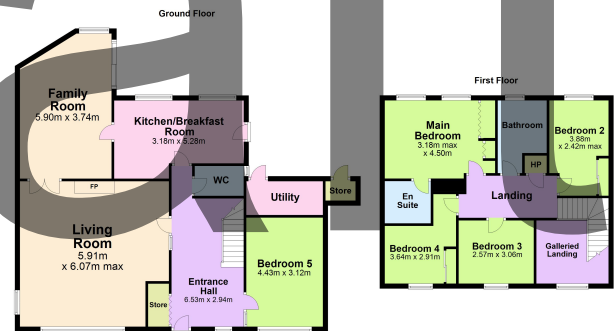
MAKE OFFERS



Draft

SPECIAL FEATURES

- Set amidst beautifully manicured grounds (0.02 of acre)
- Superb potential to extend (subject to planning permission)
- Meticulously cared for and smartly presented throughout
- Highly convenient location
- GFCH, Phonewatch Alarm 166 sqm Approx.



BER

BER E2, BER No. 117501866
Energy Performance Indicator: 376.71 kWh/m²/yr



NEGOTIATOR

Miriam Mulligan
Sherry FitzGerald
35 George's Street Upper
Dun Laoghaire Co. Dublin
N96 NW94
T: 012844422
M: 0863835125
E: miriam.mulligan@sherryfitz.ie

MORTGAGE ADVICE

For free independent advice on mortgages talk to
Tara Cassidy
T : 0874451212
M: 0874451212
E: tara.cassidy@sherryfitz.ie

sherryfitz.ie