

For Sale

Asking Price: €345,000

**Sherry
FitzGerald**
O'Neill



Pound Hill House, Waterfall,
Castletownbere, Co. Cork, P75 CK07

BER C3

sherryfitz.ie



Nestled in a peaceful rural setting just 5 minutes from the bustling coastal town of Castletownbere, this beautifully renovated and extended original farmhouse blends timeless charm with modern comforts. Set on approximately 0.4 acres of mature, landscaped grounds, the property is perfect as a serene family home or a holiday home retreat.

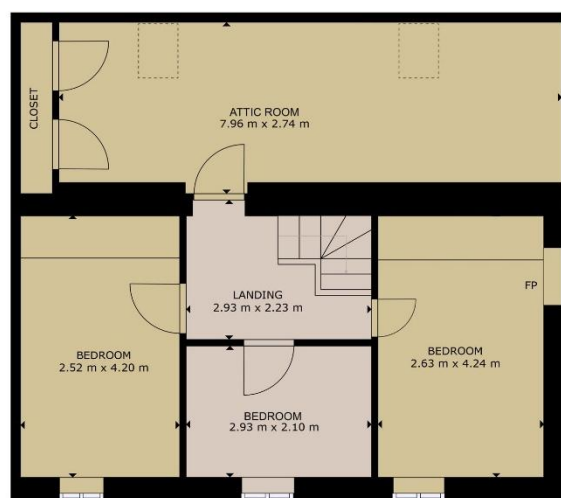
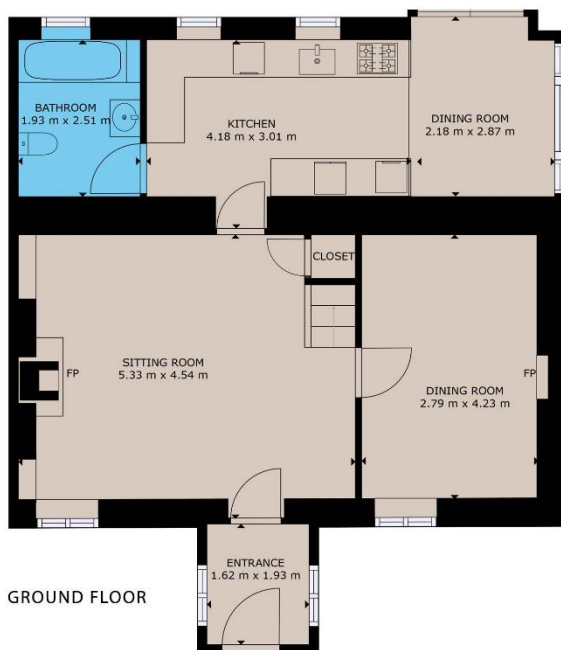
The home has been thoughtfully upgraded in recent years and features a range of enhancements including double-glazed windows, solar panels, an oil-fired central heating system and a solid fuel stove.

The ground floor comprises an inviting entrance porch, a cosy sitting room, a well-appointed kitchen, a bright dining area, and a guest bathroom. Upstairs, you'll find three comfortable bedrooms, an attic room, a home office, or additional guest space.

The surrounding gardens are a true haven, laid out in lush lawns interspersed with mature trees and shrubs that enhance the tranquil countryside feel. A neatly finished gravel driveway winds through the grounds, adding charm and convenience while blending naturally into the landscape.

Located just 3 miles from Castletownbere, this property enjoys easy access to all local amenities. The Beara Peninsula is famed for its breathtaking scenery, rich history, and abundance of walking trails and archaeological sites. As one of Europe's leading fishing ports, Castletownbere offers not only fresh seafood but also excellent opportunities for sailing and angling.





GROSS INTERNAL AREA

TOTAL : 117.91 m²

Whilst every attempt has been made to ensure the accuracy of the floor plan contained here, measurements of doors, windows, rooms and any other items are approximate and no responsibility is taken for any error, omission, or misstatement. This plan is for illustrative purposes only and should be used as such by any prospective purchaser.



**Sherry
FitzGerald**
O'Neill

NEGOTIATOR

Olivia Hanafin
Wolfe Tone Square
Bantry
Co Cork
T: 027 31030
E: info@sfoneill.ie

VIEWINGS

Strictly By Appointment Only

ENERGY RATING

BER: C3
Cert No.: 102882669
EPI: 223.17 kWh/m²/yr

sherryfitz.ie
sfoneill.ie
myhome.ie
daft.ie

CONDITIONS TO BE NOTED: A full copy of our general brochure conditions can be viewed on our website at <http://www.sherryfitz.ie/terms>, or can be requested from your local Sherry FitzGerald office. We strongly recommend that you familiarise yourself with these general conditions. While care has been taken to ensure that information contained in Sherry FitzGerald publications is correct at the time of publication, changes in circumstances after the time of publication may impact on the accuracy of this. PSRA Registration No. 004158