

For Sale

Asking Price: €650,000



9 Togher Pairc
Roundwood
County Wicklow
A98 CV60

--View & Make offers directly on [MySherryFitz.ie](https://www.MySherryFitz.ie)--

BER C1

[MySherryFitz.ie](https://www.MySherryFitz.ie)





We are delighted to bring this wonderful property to the market. Located in the heart of Roundwood village, within a quiet residential development, 9 Togher Pairc is the ideal family home. Bright and spacious within and tastefully decorated throughout this fine home provides a quality of finish and attention to detail rarely found.

Upon entering the bright, wide hallway you will be struck by the elegant proportions, spacious reception room, sleek modern kitchen with quartz counters and four large double bedrooms. The property is surrounded by sheltered gardens with views to the surrounding countryside and boasts a separate garage with ample storage space.

Togher Pairc is always in demand and with its enviable location tucked away in a small cul-de-sac beside a large open green, this lovely home will appeal to many. Roundwood is located just 10 minutes from the N11 motorway and is a thriving village with local school, shops and excellent restaurants. The village is at the gateway to the Wicklow mountains and close to many wonderful scenic walks and sporting facilities.



Special Features & Services:

-

Accommodation:

Entrance Hall Beautiful spacious entrance hallway with ceramic tiled floor, decorative coving, guest wc, separate cloakroom and understair storage

Living Room Well proportioned room with windows to three aspects, limestone fireplace with marble inset, decorative coving and centre rose, double doors with glass inset lead to the hallway

Kitchen / Dining Bright and light filled, this attractive kitchen features fully fitted cream units with integrated hob & oven, integrated dishwasher, breakfast bar with quartz countertop, spotlights, coving and centre rose. The ceramic tiling continues from hallway and there are double doors leading to a sheltered patio area.

Utility Room Tiled floor, excellent storage and plumbing for washing machine and access to rear

Bedroom 1 (Master) Spacious and bright, this large double room boasts views to the front garden with a walk in wardrobe and ensuite

Ensuite Tiled floor and walls to dado height, wc, wash hand basin and corner shower with Mira pump shower

Bedroom 2 Double bedroom with dual aspect windows, recessed storage and an ensuite

Ensuite Timber floor, wc, wash hand basin and corner Mira pump shower

Bedroom 3 Spacious double bedroom with views to open green and velux window to rear

Bedroom 4 With views to rear garden this large double bedroom has a large walk in wardrobe and velux window.

Bathroom Large family bathroom with attractive tiling throughout. jacuzzi bath. wc. wash hand basin and walk in

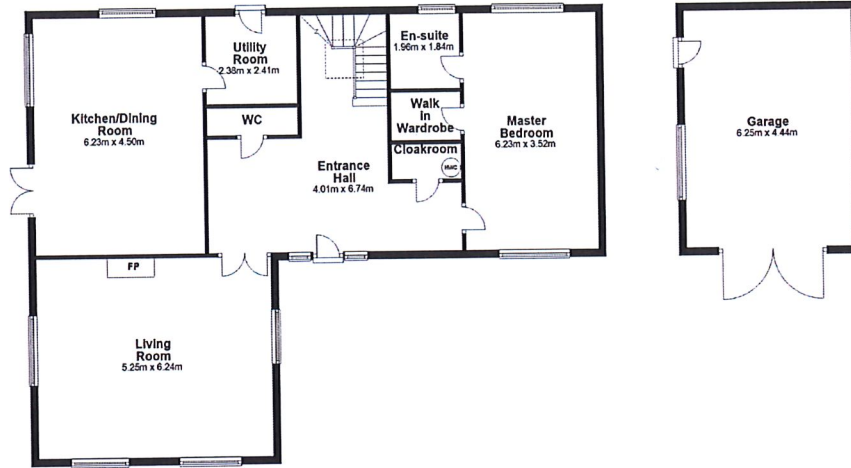


BER: BER C1, BER No. 113784573

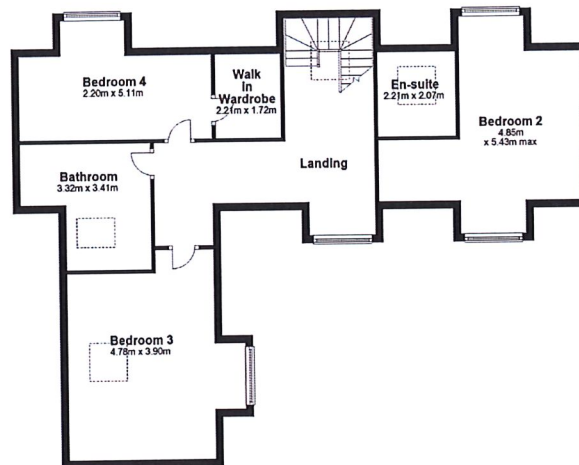
Directions:

A98 CV60

Ground Floor



First Floor



Total area: approx. 222.4 sq. metres

NEGOTIATOR

Sherry FitzGerald Catherine O'Reilly
1 Bridge Street Arcade, Fitzwilliam Square,
Wicklow Town

0404 66466
info@sfcatherineoreilly.ie

MySherryFitz.ie



**Sherry
FitzGerald**
Catherine O'Reilly

CONDITIONS TO BE NOTED: A full copy of our general brochure conditions can be viewed on our website at <http://www.sherryfitz.ie/terms> or can be requested from your local Sherry FitzGerald office. We strongly recommend that you familiarize yourself with these general conditions.
PSRA Registration No. 003161