

FURZEFIELD

Swords
Floor Plans



*Love where
you live*

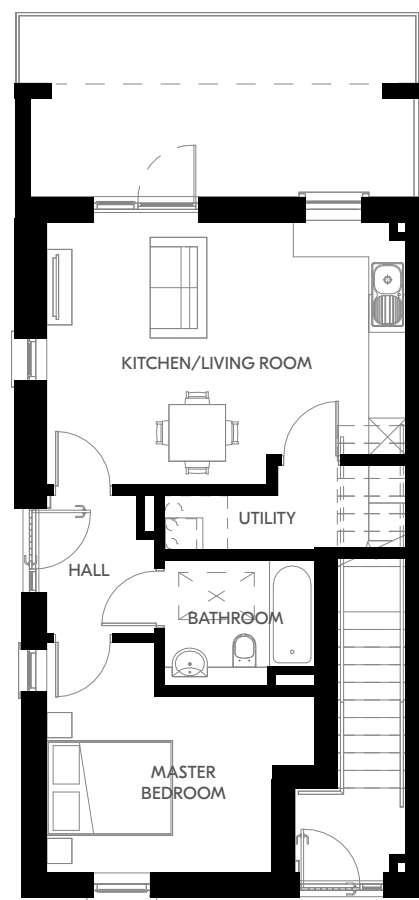
Glenveagh
Home of the new.



LOVE
A PLACE OF
YOUR OWN
LIVE
CONNECTED TO
YOUR COMMUNITY

THE DUNNOCK

1 Bed Apartment
50 - 54 sqm | 538 - 586 sqt



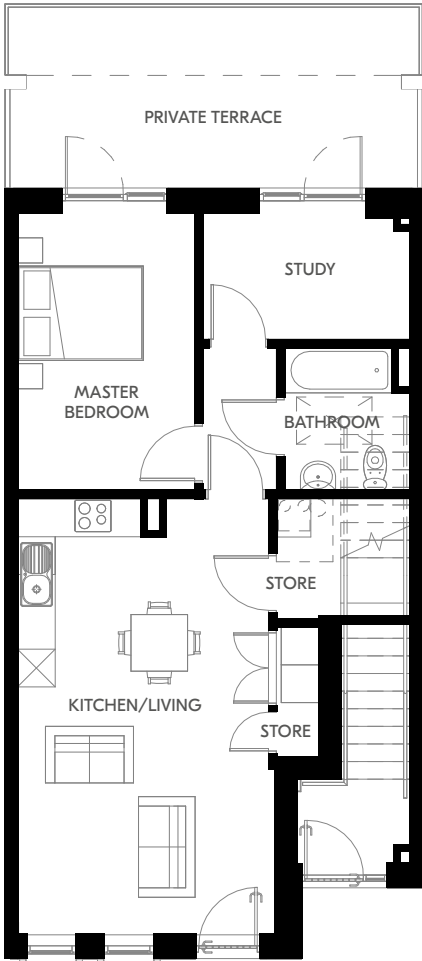
Ground Floor

Plans and dimensions are indicative only and subject to change. Glenveagh Homes Ltd may alter the layout, building style, landscape and spec without notice. The finished home may therefore vary from the information provided.

For illustrative purposes.

THE DUCK

1 Bed Apartment + Study
62 - 63 sqm | 672 - 677 sqft



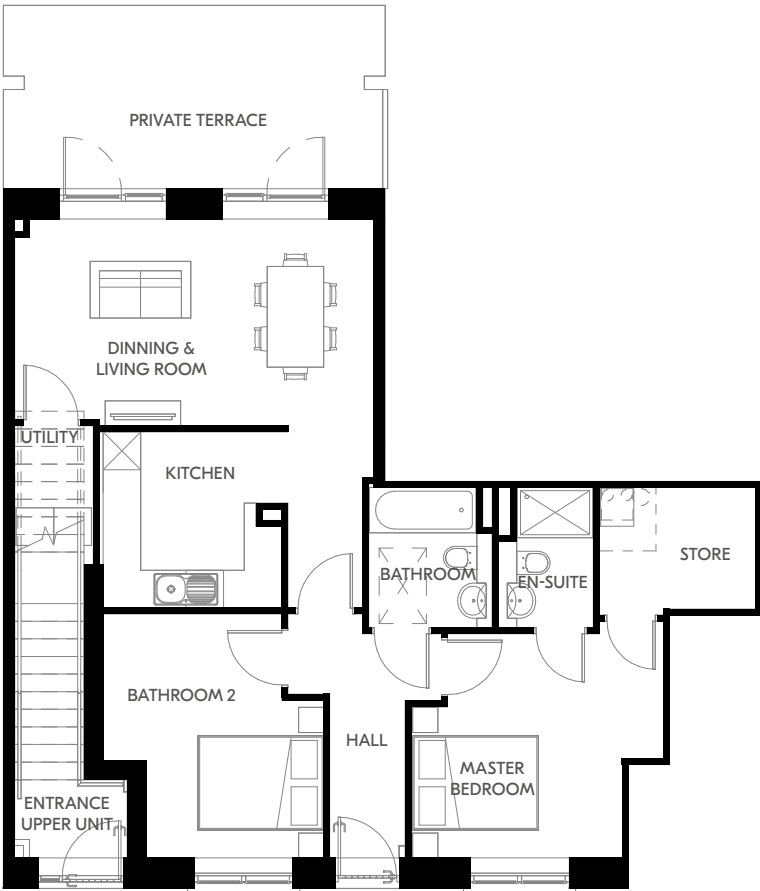
Ground Floor

Plans and dimensions are indicative only and subject to change. Glenveagh Homes Ltd may alter the layout, building style, landscape and spec without notice. The finished home may therefore vary from the information provided.

For illustrative purposes.

THE FINCH

2 Bed Apartment
72 - 94 sqm | 773 - 1,011 sqft



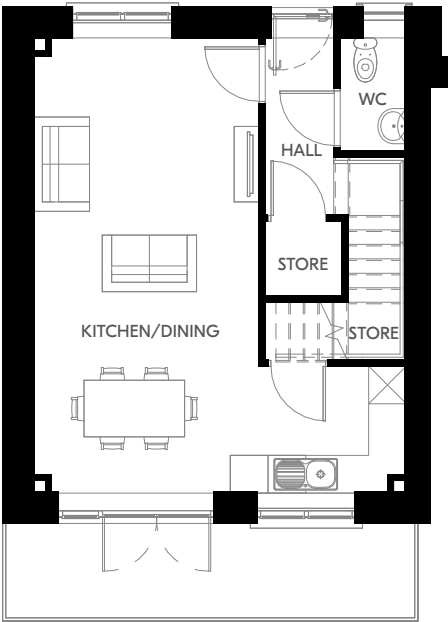
Ground Floor

Plans and dimensions are indicative only and subject to change. Glenveagh Homes Ltd may alter the layout, building style, landscape and spec without notice. The finished home may therefore vary from the information provided.

For illustrative purposes.

THE FERNWREN

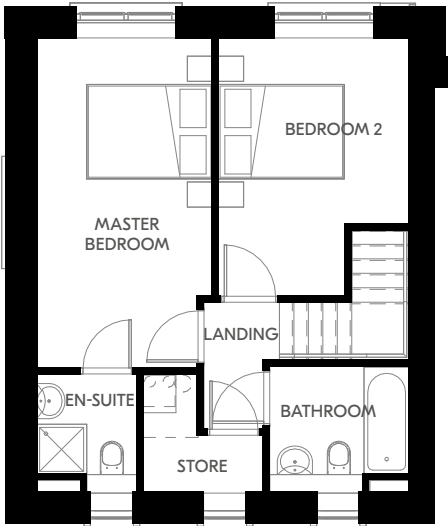
2 Bed Duplex
86 sqm | 918 - 925 sqft



Ground Floor

Plans and dimensions are indicative only and subject to change. Glenveagh Homes Ltd may alter the layout, building style, landscape and spec without notice. The finished home may therefore vary from the information provided.

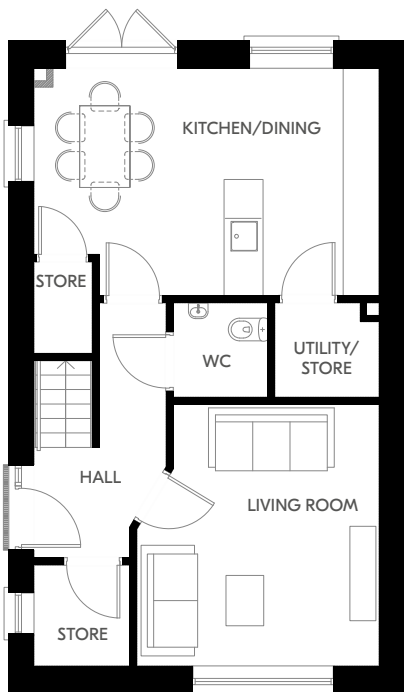
For illustrative purposes.



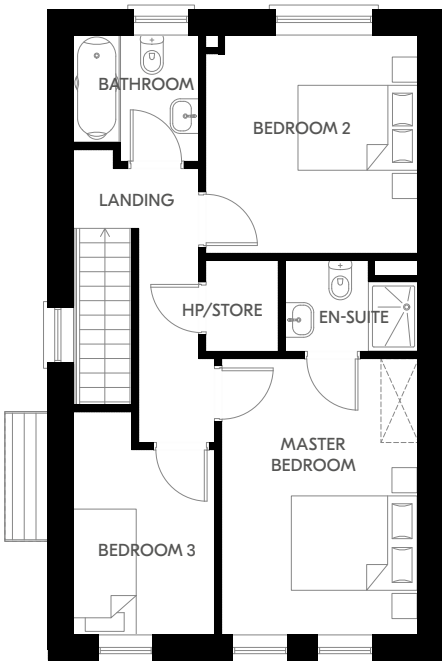
First Floor

THE JACKDAW

3 Bed Detached
104 sqm | 1,124 sqft



Ground Floor



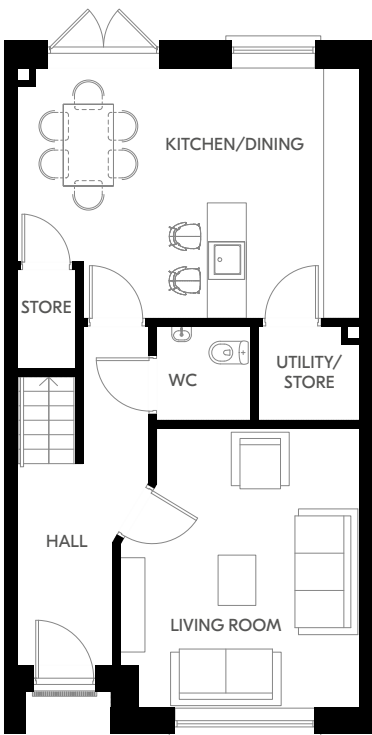
First Floor

Plans and dimensions are indicative only and subject to change. Glenveagh Homes Ltd may alter the layout, building style, landscape and spec without notice. The finished home may therefore vary from the information provided.

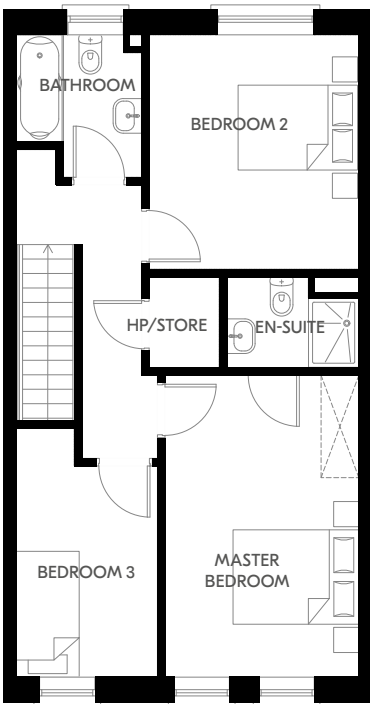
For illustrative purposes.

THE PHEASANT

3 Bed Mid & End of Terrace
110 sqm | 1,181 - 1,185 sqft



Ground Floor



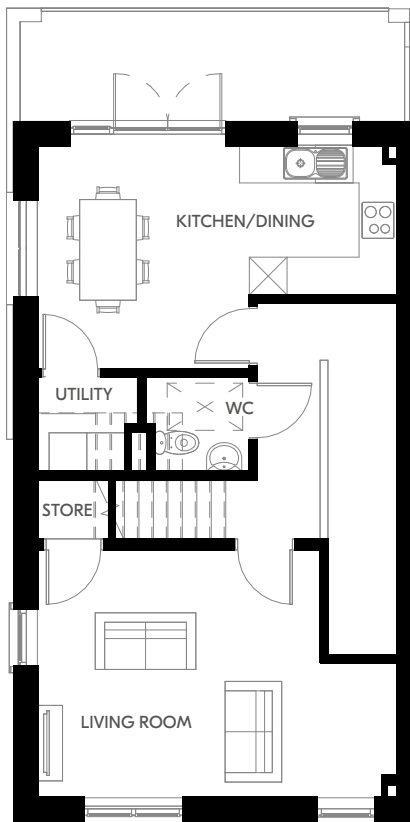
First Floor

Plans and dimensions are indicative only and subject to change. Glenveagh Homes Ltd may alter the layout, building style, landscape and spec without notice. The finished home may therefore vary from the information provided.

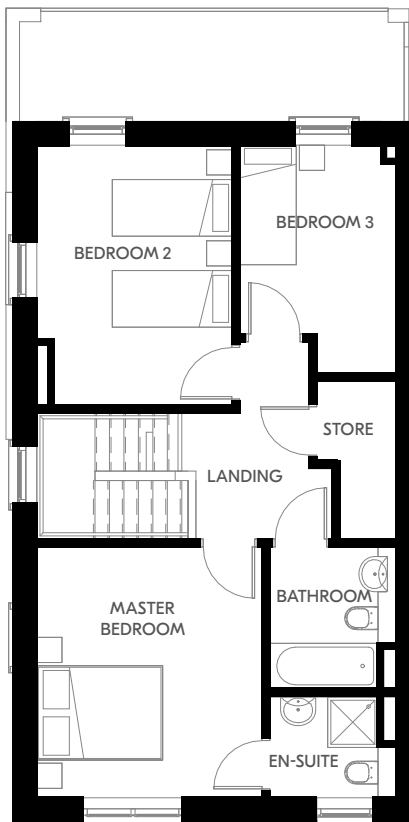
For illustrative purposes.

THE HAWFINCH

3 Bed Duplex
111 - 130 sqm | 1,190 - 1,401 sqft



First Floor



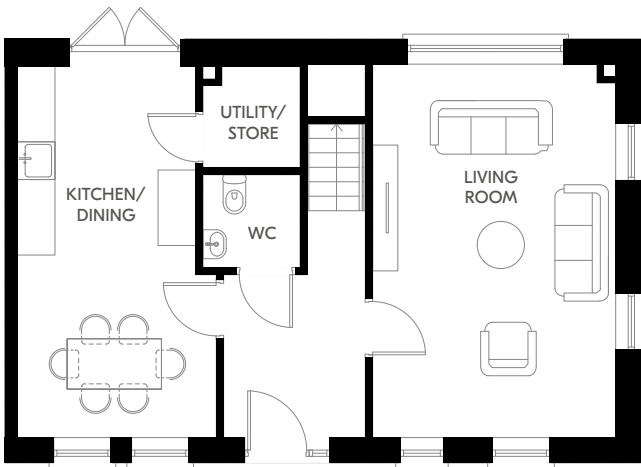
Second Floor

Plans and dimensions are indicative only and subject to change. Glenveagh Homes Ltd may alter the layout, building style, landscape and spec without notice. The finished home may therefore vary from the information provided.

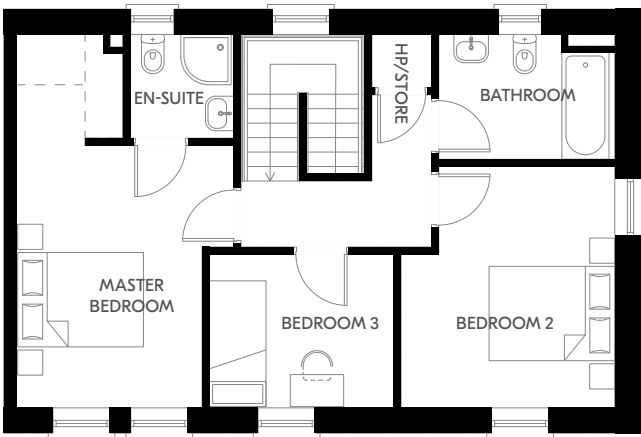
For illustrative purposes.

THE SANDERLING

3 Bed Mid, End, Semi & Detached
113 sqm | 1,214 - 1,216 sqft



Ground Floor



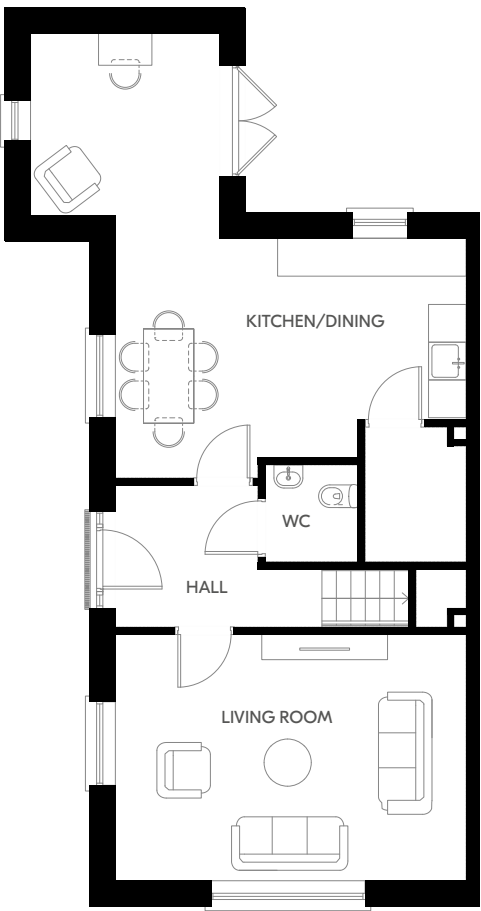
First Floor

Plans and dimensions are indicative only and subject to change. Glenveagh Homes Ltd may alter the layout, building style, landscape and spec without notice. The finished home may therefore vary from the information provided.

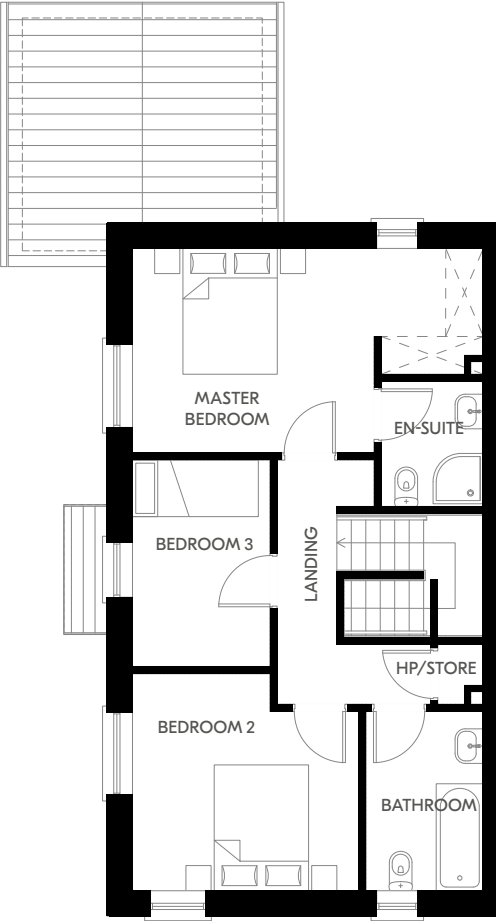
For illustrative purposes.

THE KINGFISHER

3 Bed End of Terrace, Extended Kitchen | Side Entry
123 sqm | 1,324 sqft



Ground Floor



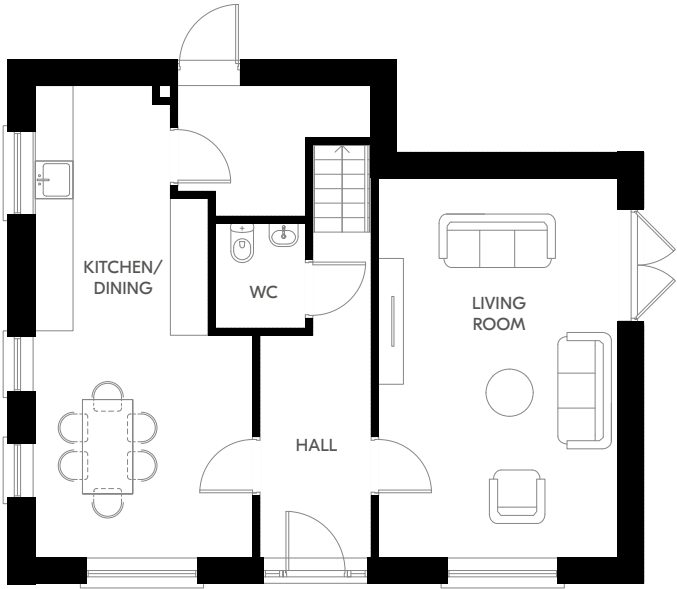
First Floor

Plans and dimensions are indicative only and subject to change. Glenveagh Homes Ltd may alter the layout, building style, landscape and spec without notice. The finished home may therefore vary from the information provided.

For illustrative purposes.

THE KESTREL

3 Bed End of Terrace, Semi Detached & Detached + Study
127 sqm | 1,367 sqft



Ground Floor



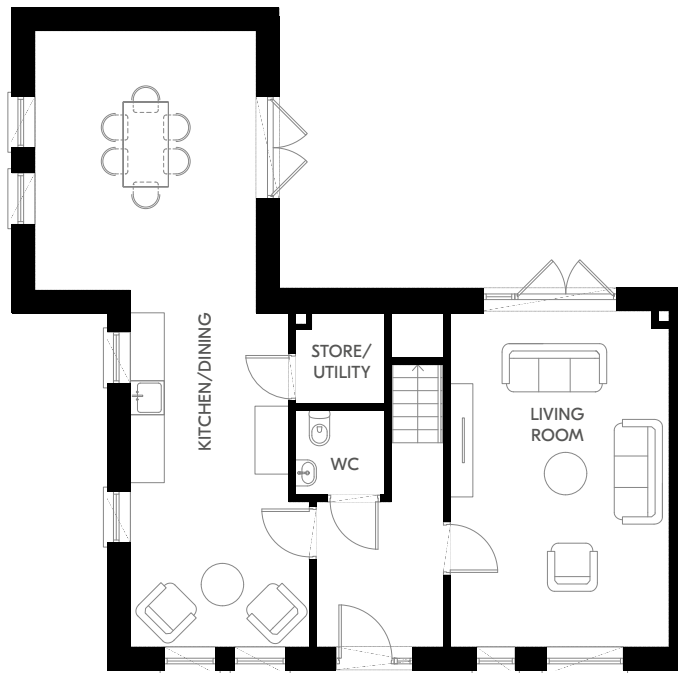
First Floor

Plans and dimensions are indicative only and subject to change. Glenveagh Homes Ltd may alter the layout, building style, landscape and spec without notice. The finished home may therefore vary from the information provided.

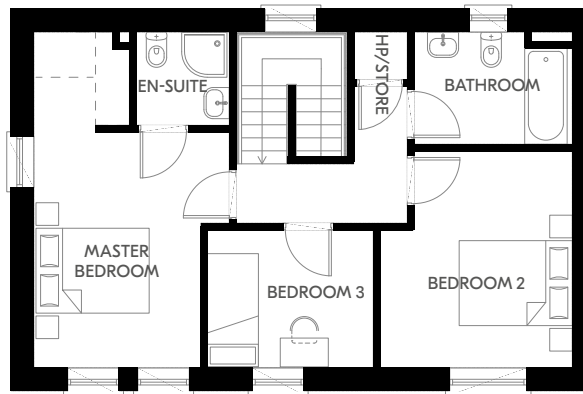
For illustrative purposes.

THE GOLDFINCH

3 Bed End of Terrace, Semi Detached & Detached, Extended Kitchen
132 sqm | 1,417 sqft



Ground Floor



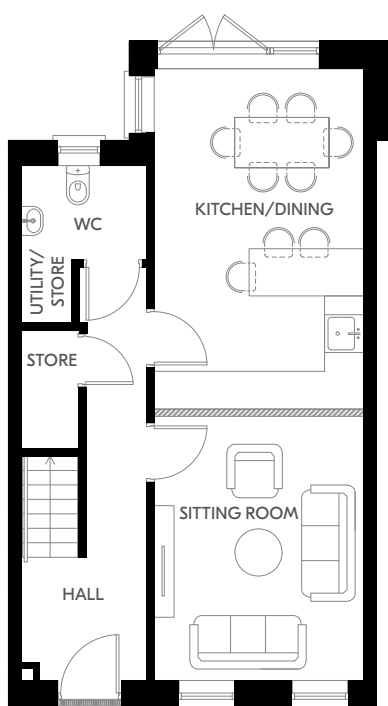
First Floor

Plans and dimensions are indicative only and subject to change. Glenveagh Homes Ltd may alter the layout, building style, landscape and spec without notice. The finished home may therefore vary from the information provided.

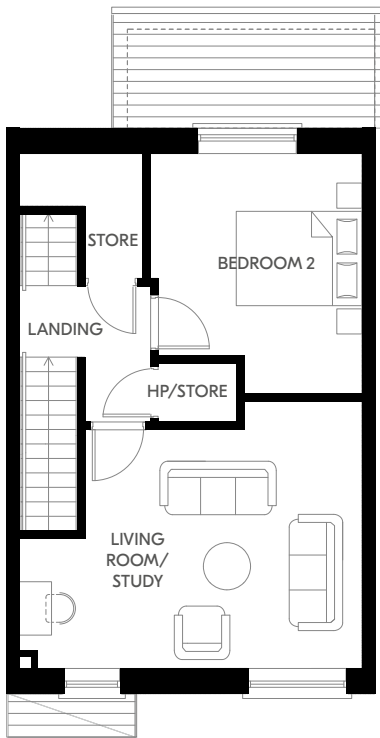
For illustrative purposes.

THE BRAMBLING

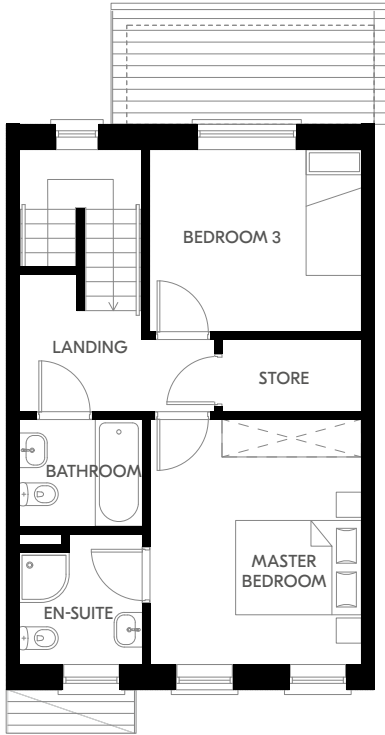
3 Bed Mid & End of Terrace + Study | 3 Storey
139 sqm | 1,497 - 1,500 sqft



Ground Floor



First Floor



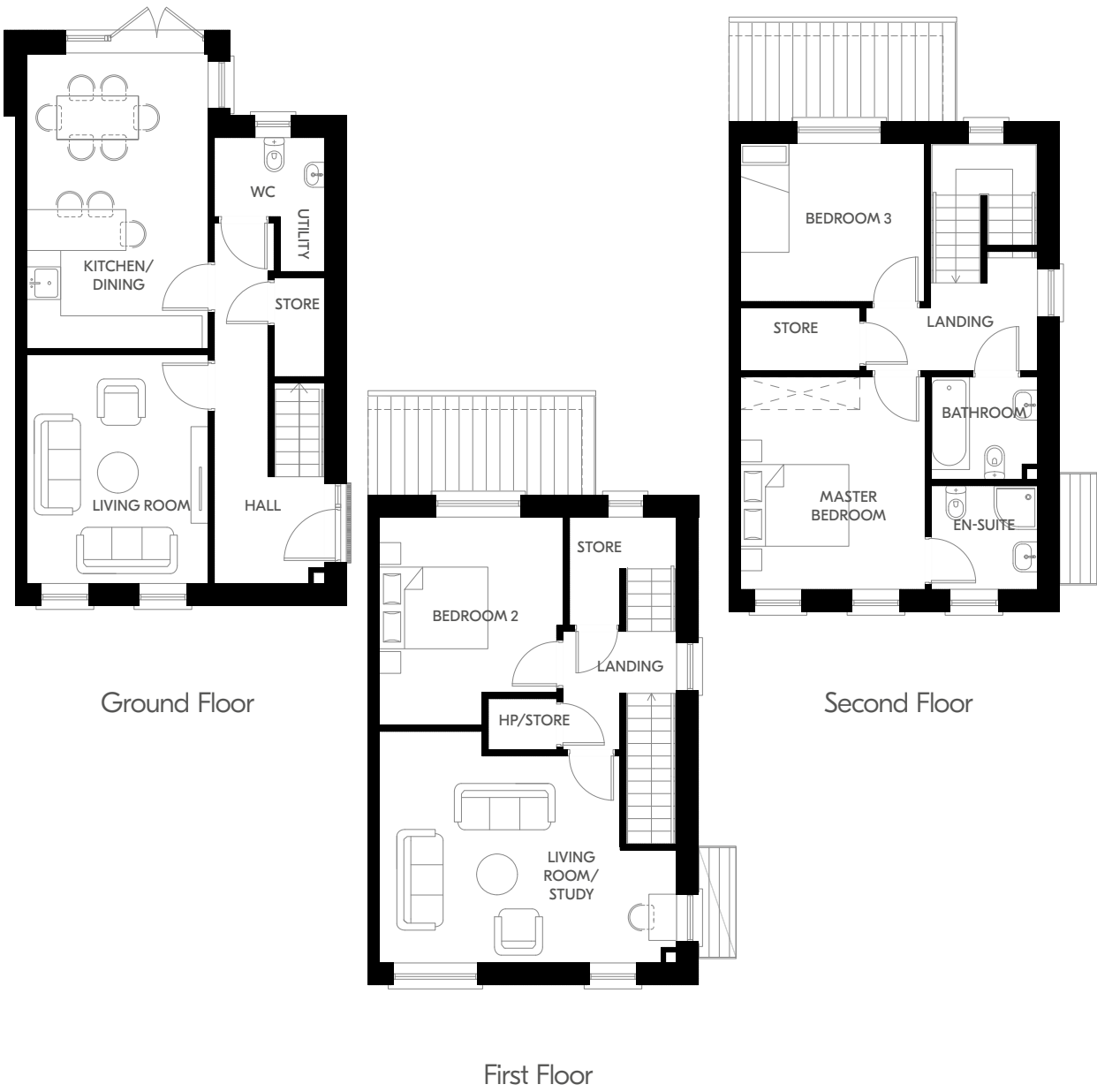
Second Floor

Plans and dimensions are indicative only and subject to change. Glenveagh Homes Ltd may alter the layout, building style, landscape and spec without notice. The finished home may therefore vary from the information provided.

For illustrative purposes.

THE DUNLIN

3 Bed End of Terrace + Study | 3 Storey | Side Entry
139 sqm | 1,498 sqft

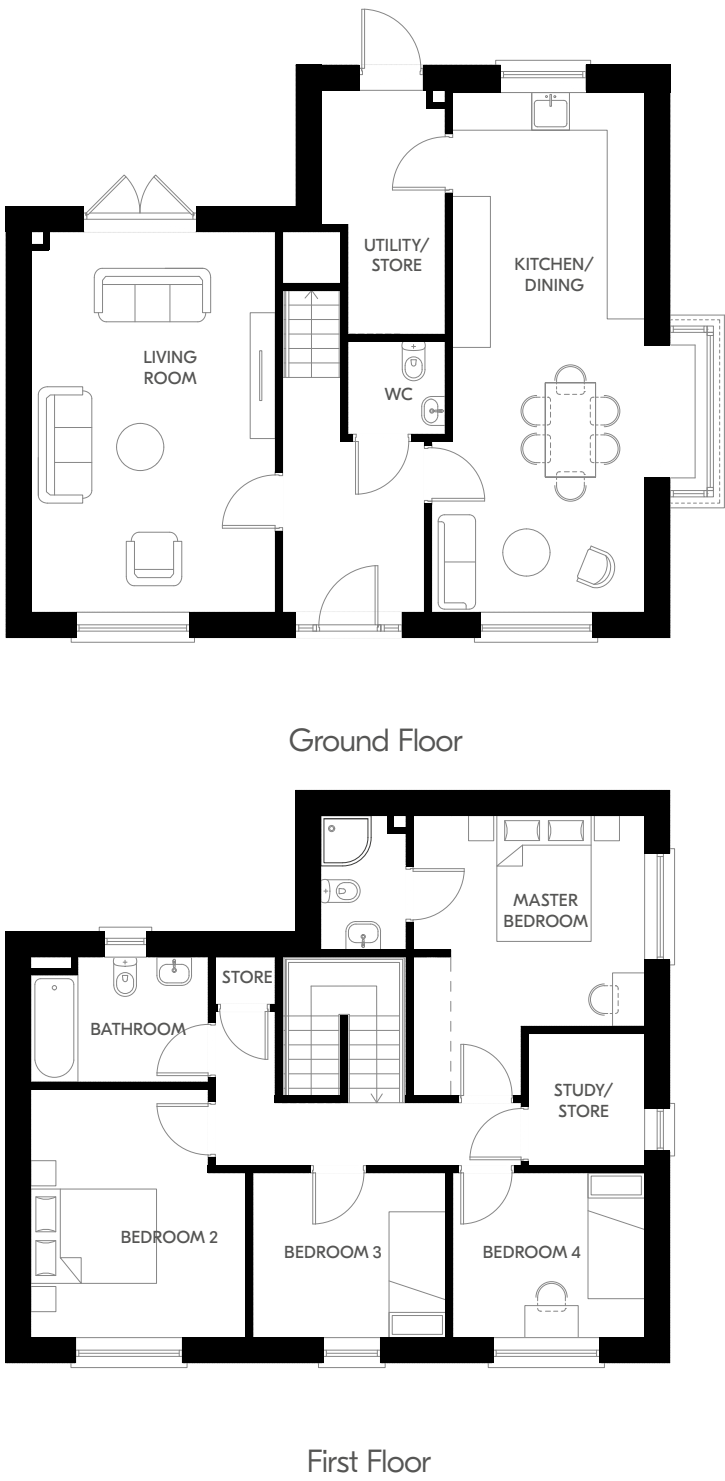


Plans and dimensions are indicative only and subject to change. Glenveagh Homes Ltd may alter the layout, building style, landscape and spec without notice. The finished home may therefore vary from the information provided.

For illustrative purposes.

THE CORNCRAKE

4 Bed Semi Detached & Detached | Double Fronted
141 - 143 sqm | 1,519 - 1,536 sqft



Plans and dimensions are indicative only and subject to change. Glenveagh Homes Ltd may alter the layout, building style, landscape and spec without notice. The finished home may therefore vary from the information provided.

For illustrative purposes.

THE MERLIN

4 Bed Mid & End of Terrace | 3 Storey
156 sqm | 1,676 sqft



Plans and dimensions are indicative only and subject to change. Glenveagh Homes Ltd may alter the layout, building style, landscape and spec without notice. The finished home may therefore vary from the information provided.

For illustrative purposes.

THE ROOK

4 Bed End Terrace
157 sqm | 1,690 sqft



Plans and dimensions are indicative only and subject to change. Glenveagh Homes Ltd may alter the layout, building style, landscape and spec without notice. The finished home may therefore vary from the information provided.

For illustrative purposes.

Love where
you live



For illustrative purposes only.



Love where
you live



Discover our
full range of
communities at:

[glenveagh.ie](https://www.glenveagh.ie)

