

Modern home with panoramic views over the Atlantic Ocean

Falmore, Dungloe, Co. Donegal, F94 NR7V



Modern home with panoramic views over the Atlantic Ocean

Falmore, Dungloe, Co. Donegal, F94 NR7V



Modern home with panoramic views over the Atlantic Ocean

Falmore, Dungloe, Co. Donegal, F94 NR7V



About this property

Built into a rugged coastline, this stunning property offers an unparalleled blend of modern comforts in a natural wild landscape.

Crohy Head is a striking modern home set on an elevated, private site. The residence offers well-arranged lateral accommodation showcasing light-filled interiors and elegant finishes. The entrance hall opens into a spacious open-plan kitchen/dining and living area, which features floor to ceiling windows that flood the space with natural light and draws the eye to the seascape beyond. The living room is centred around a cosy, while the adjoining kitchen is fully fitted with modern cabinetry and integrated appliances. The layout allows for effortless entertaining and relaxed everyday living. Off the kitchen is a useful utility room with plenty of storage and a rear access.

The master bedroom suite enjoys coastal views and includes an ensuite shower room and walk-in-wardrobe. Two further double bedrooms are well-proportioned, in addition to a family bathroom with a bath and walk-in shower. Internal features include underfloor heating, solid wood architraves and skirting, beautifully tiled flooring and luxury bathroom finishes while the house is finished in a sandstone brick which blends into the rocky surround.

Outside the garden is mostly laid to lawn with a gated entrance and a

paved driveway and an outside seating area. There is also a block built garage to the rear which is ideal for storage.

Modern home with panoramic views over the Atlantic Ocean

Falmore, Dungloe, Co. Donegal, F94 NR7V



Property Details

For those travelling further afield, Donegal Airport (Carrickfinn) is approximately 20km away, offering regular flights to Dublin and the UK, making this remote yet well-connected location easily accessible. City of Derry Airport is 105 km distant also.



Modern home with panoramic views over the Atlantic Ocean

Falmore, Dungloe, Co. Donegal, F94 NR7V

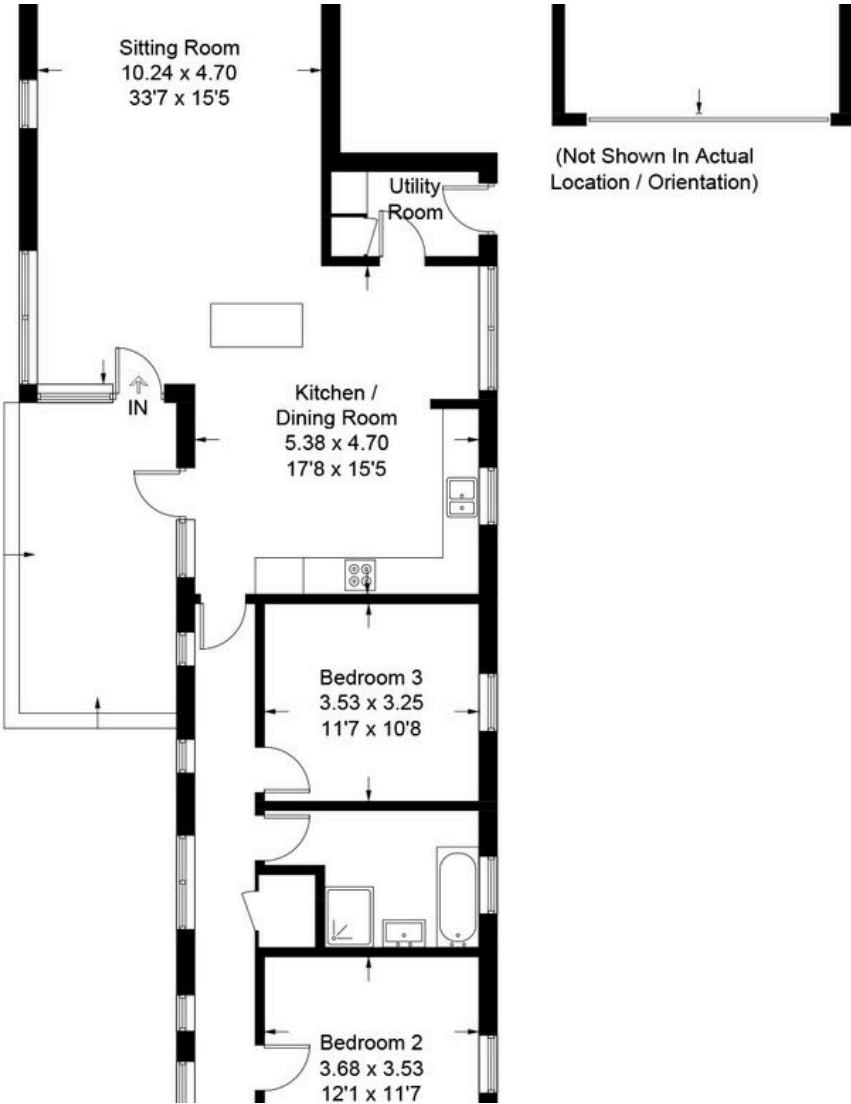


Modern home with panoramic views over the Atlantic Ocean

Falmore, Dungloe, Co. Donegal, F94 NR7V



Plans



Modern home with panoramic views over the Atlantic Ocean

Falmore, Dungloe, Co. Donegal, F94 NR7V

savills



Local Area

The uniquely designed home offers breathtaking views of the Atlantic Ocean, nearby islands, Breeches Sea Arch, and Portnoo and Dooey Beaches. Located on Crohy Head on Donegal's stunning west coast near Dungloe, it provides a warm community with shops, cafés, and traditional music. Dungloe hosts the lively Mary from Dungloe Festival, attracting visitors from afar. Nearby, Cruit Island Golf Club and Glenveagh National Park offer outstanding outdoor activities and beautiful natural surrounding



Modern home with panoramic views over the Atlantic Ocean

Falmore, Dungloe, Co. Donegal, F94 NR7V



Property Details

Key Features

- Full sea views
- Open-plan modern layout
- Beautifully designed home with high-end finishes
- Elevated site
- Easily maintained gardens

Services & Additional Information

Mains water, mains sewerage, air to water heat pump.

BER

BER Rating = B1



Modern home with panoramic views over the Atlantic Ocean

Falmore, Dungloe, Co. Donegal, F94 NR7V



Enquire



Liam McCarthy
Dublin - Country
+353 83 878 4989
liam.mccarthy@savills.ie

More Information



View on website



View Digital Brochure



Property Search

Viewing strictly by appointment

Property Ref: DUY240166



Important Notice: Savills, its clients and any joint agents give notice that 1: They are not authorised to make or give any representations or warranties in relation to the property either here or elsewhere, either on their own behalf or on behalf of their client or otherwise. They assume no responsibility for any statement that may be made in these particulars. These particulars do not form part of any offer or contract and must not be relied upon as statements or representations of fact. 2: Any areas, measurements or distances are approximate. The text, photographs and plans are for guidance only and are not necessarily comprehensive. It should not be assumed that the property has all necessary planning, building regulation or other consents and Savills have not tested any services, equipment or facilities. Purchasers must satisfy themselves by inspection or otherwise. *powered by* **FluoPro**