

For Sale
By Private Treaty

Guide Price
€POA

REA
JOHN LEE



DOONANE
Newport, Co. Tipperary.

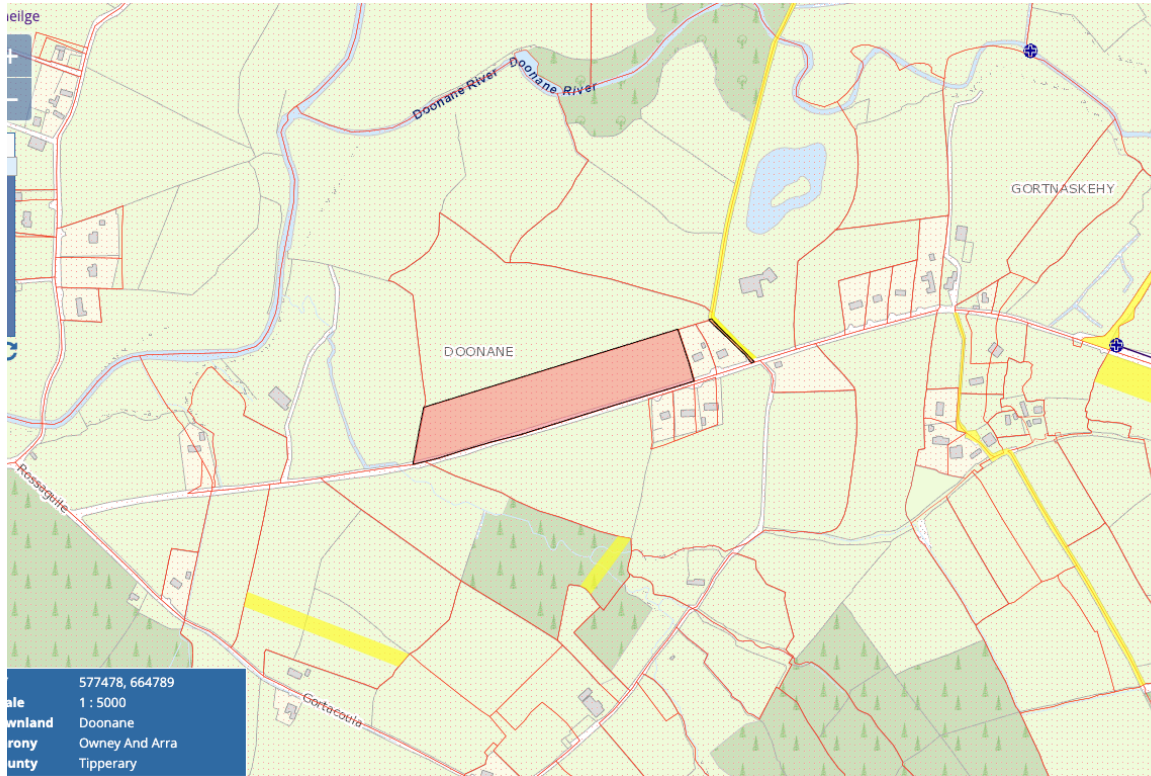
Roadside Agricultural Lands c. 6.4 acres



reajohnlee.ie

PSRA: 002764

Location:



Description

Roadside Agricultural Lands c. 6.4 acres contained in one block a short distance from Newport and Toor. The lands have extensive road frontage and while presently used for agricultural purposes, they have some future site potential, subject to the relevant planning. An ideal opportunity to acquire a compact plot of land in a scenic location. Full Details from the agent.

Directions

From Newport turn left in the Square, At the graveyard keep right and then take next left. Proceed straight on to fork in the road and veer right, than keep left on main road and the lands are a short distance on the left with sign thereon. 5.5km Newport

Sat Nav: 52.73323709222124, -8.343868722811703

Price €POA

Selling agent

REA John Lee
Main Street,
Newport,
Co. Tipperary.
V94 FC8Y

T 061 378121
E info@reajohnlee.ie
W www.reajohnlee.ie

Sales agent

James Lee
BSc. Hon's. MSCSI, MRICS
Director

T (086) 2351221
E james@reajohnlee.ie



CONDITIONS TO BE NOTED: The terms set out herein are by way of partial summary. Intending purchasers should obtain a copy of the Conditions of Sale where the matters are dealt with comprehensively. Particulars and Conditions of sale are available from the Agents and the Solicitors with carriage of sale. REA John Lee for themselves and for the vendors whose agents they are, give notice that: 1) The particulars are set out in this Brochure and Schedule as a general outline for the guidance of intending purchasers and do not constitute part of an offer or contract. 2) All descriptions, dimensions, references to condition and necessary permissions for the use and occupation and other details are given in good faith and are believed to be correct but any intending purchasers should not rely on them as statements or representations of fact but must satisfy themselves by inspection or otherwise as to the correctness of each of them. 3) No person in the employment of REA John Lee has any authority to make representations or warranty whatsoever in relation to this property. All prices quoted are exclusive of VAT.

reajohnlee.ie

PSRA: 002764

