

# SITE PLAN

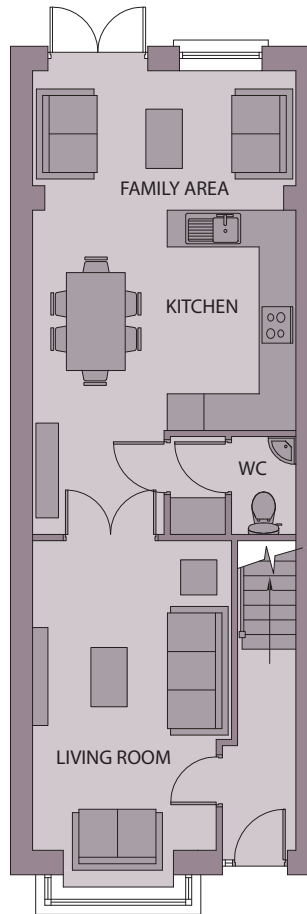


- Type C  
4 Bed Semi Detached
- Type C1  
4 Bed Semi Detached
- Type C2  
4 Bed Detached
- Type D  
3 Bed Townhouse
- Type D1  
3 Bed End Townhouse
- Type E  
5 Bed Semi Detached
- Type E2  
5 Bed Detached
- Type F  
4 Bed Townhouse
- Type F1  
4 Bed Townhouse
- Type F2  
4 Bed Townhouse
- Type G  
4 Bed Semi Detached
- Type K  
3 Bed Semi Detached
- Type K1  
3 Bed Semi Detached

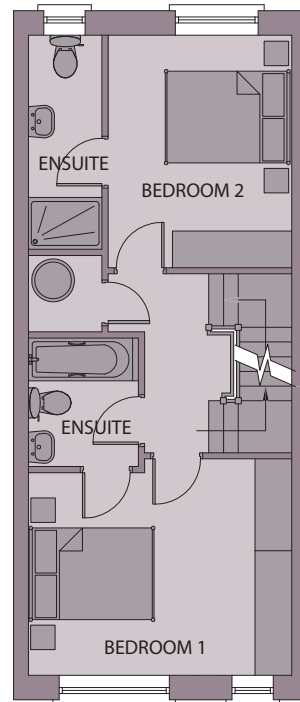


For identification purposes only

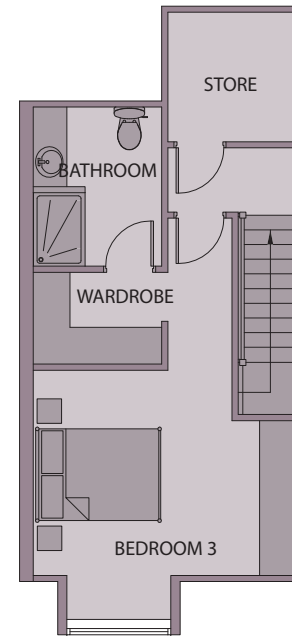
## HOUSE TYPE D



GROUND FLOOR



FIRST FLOOR



SECOND FLOOR

**3 Bedroom Townhouse**  
c.1,530 sq.ft. / 142 sq.m.



A new development of traditional masonry built homes with exceptional specification.

Croftwell offers large three and four bedroom A-rated family homes situated in the village of Rathcoole, with Dublin City on your doorstep.

2 - 6, Croftwell Square



[www.croftwell.ie](http://www.croftwell.ie)

Directions: From Dublin take the N7 (Naas / Limerick Road). Take exit 4 signed Rathcoole / Saggart. Take the second exit off the roundabout and continue straight ahead. Approach the next roundabout and take the first exit signed Rathcoole. Continue straight ahead and enter Rathcoole Village. Proceed along the Main Street, turn left at The Potin Stil and continue on to School Road. Croftwell is on your right hand side.

PRSA registration no. 002630. These particulars and any accompanying documentation are set out as a general outline only, and do not constitute any part of an offer and are issued strictly on that basis. Measurements are approximate and drawings, maps and plans are not drawn to scale. The builder reserves the right to make alterations to the design, specification and layout. Brochure by [www.evolutionvisuals.com](http://www.evolutionvisuals.com)



**01 628 8400**