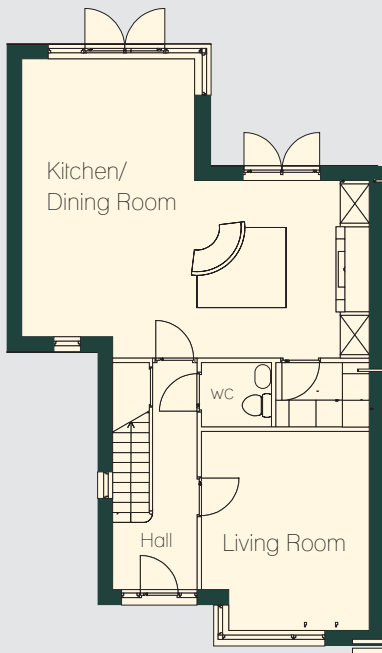




# Shandon Wood

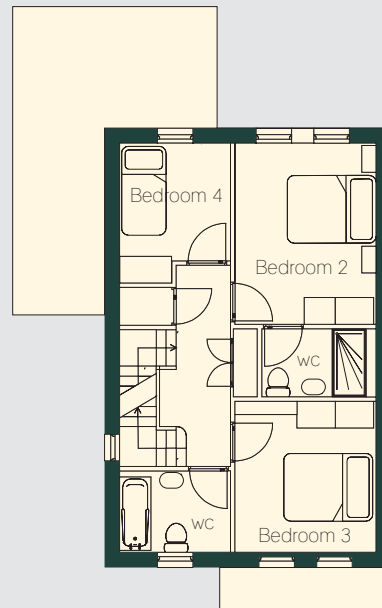
— MONKSTOWN —

## Four Bedroom End Terraced House



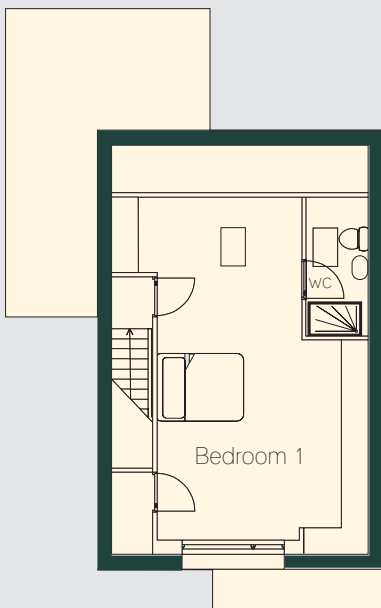
### Ground Floor

Gross Floor Area: 74.0 sqm 796.5 (sqft) Approx.



### First Floor

Gross Floor Area: 53.2 sqm (573 sqft) Approx.



### Second Floor:

Gross Floor Area: 44 sqm (474 sqft) Approx.

**Total Floor Area 171 sqm  
(1840 sqft) Approx.**