

## The Holly Garden Suite

### Total Size

239 sq mts 2573 sq ft

### Internal Size

117 sq mts 1260 sq ft

### Terrace/Garden

122 sq mts 1313 sq ft

### Entrance Hall

3.6 x 2.3 mts 11.8 x 7.5 ft

### Living/Dining Room

4.8 x 7.9 mts 15.7 ft x 25.6 ft

### Kitchen

3.20 x 2.75 mts 10.5 x 9 ft

### Lifestyle Studio

2.3 x 3.3 mts 7.5 x 10.8 ft

### Wine Cellar

1.75 x 2.5 mts 5.7 ft x 8.2 ft

### Master Bedroom

3.60 x 4.10 mts 11.8 x 13.5 ft

### En Suite

3.00 x 2.30 mts 9.8 x 7.5 ft

### Bedroom 2

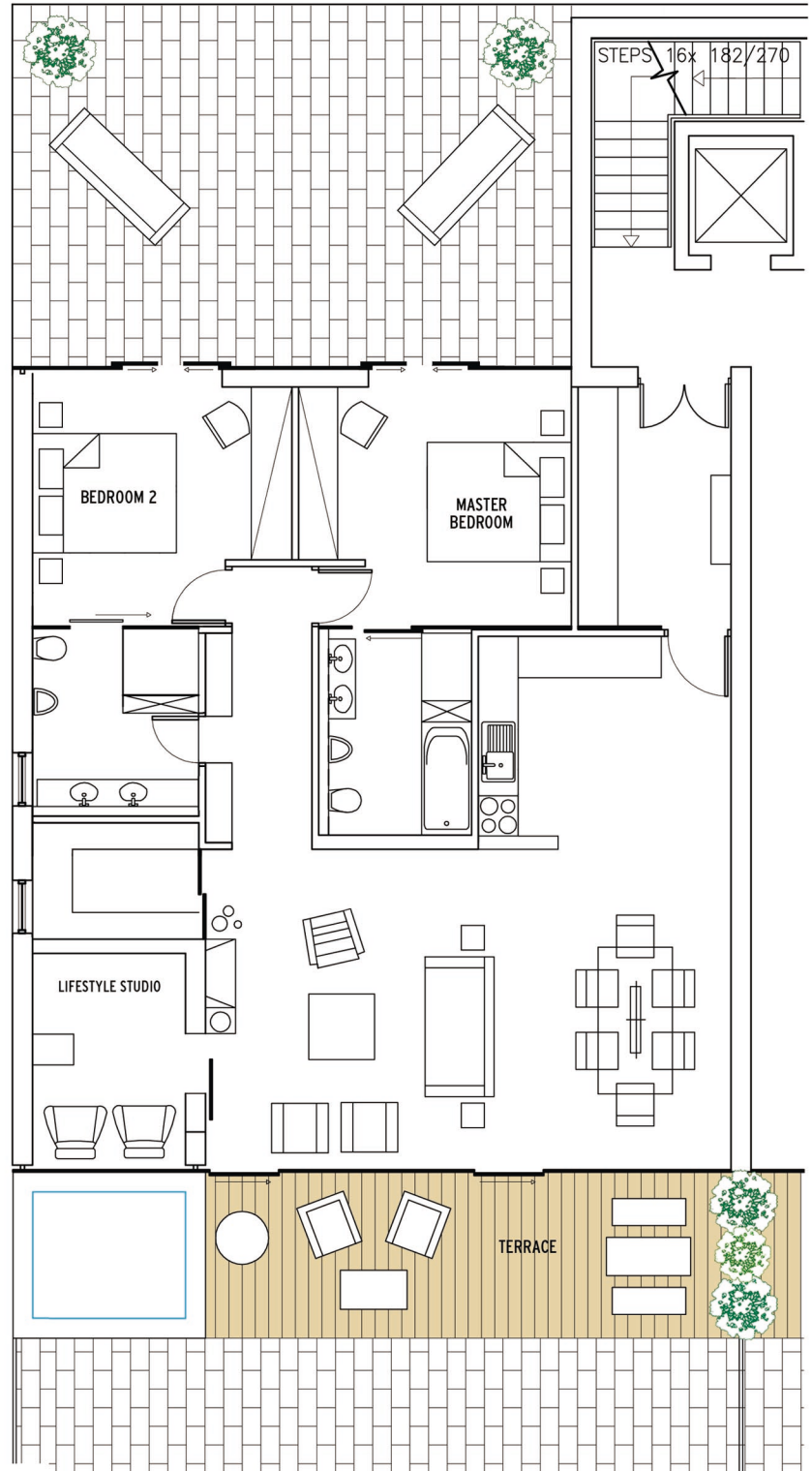
3.60 x 3.90 mts 11.8 x 12.8 ft

### En Suite

2.80 x 2.50 mts 9.2 x 8.2 ft

### Basement Store Room

3.1 x 2.5 mts 10.1 x 8.2 ft



All plans and dimensions are indicative and may change.