

# For Sale

By Public Auction

Guide Price

€P.O.A.

# REA

## JOHN LEE

### PRIME ROADSIDE LANDS



REA

JOHN LEE

For Sale by Public Auction on Wed. 31<sup>st</sup> July @ 3pm  
in our offices Main Street, Newport, Co. Tipperary

## FOXHALL

Newport, Co. Tipperary.

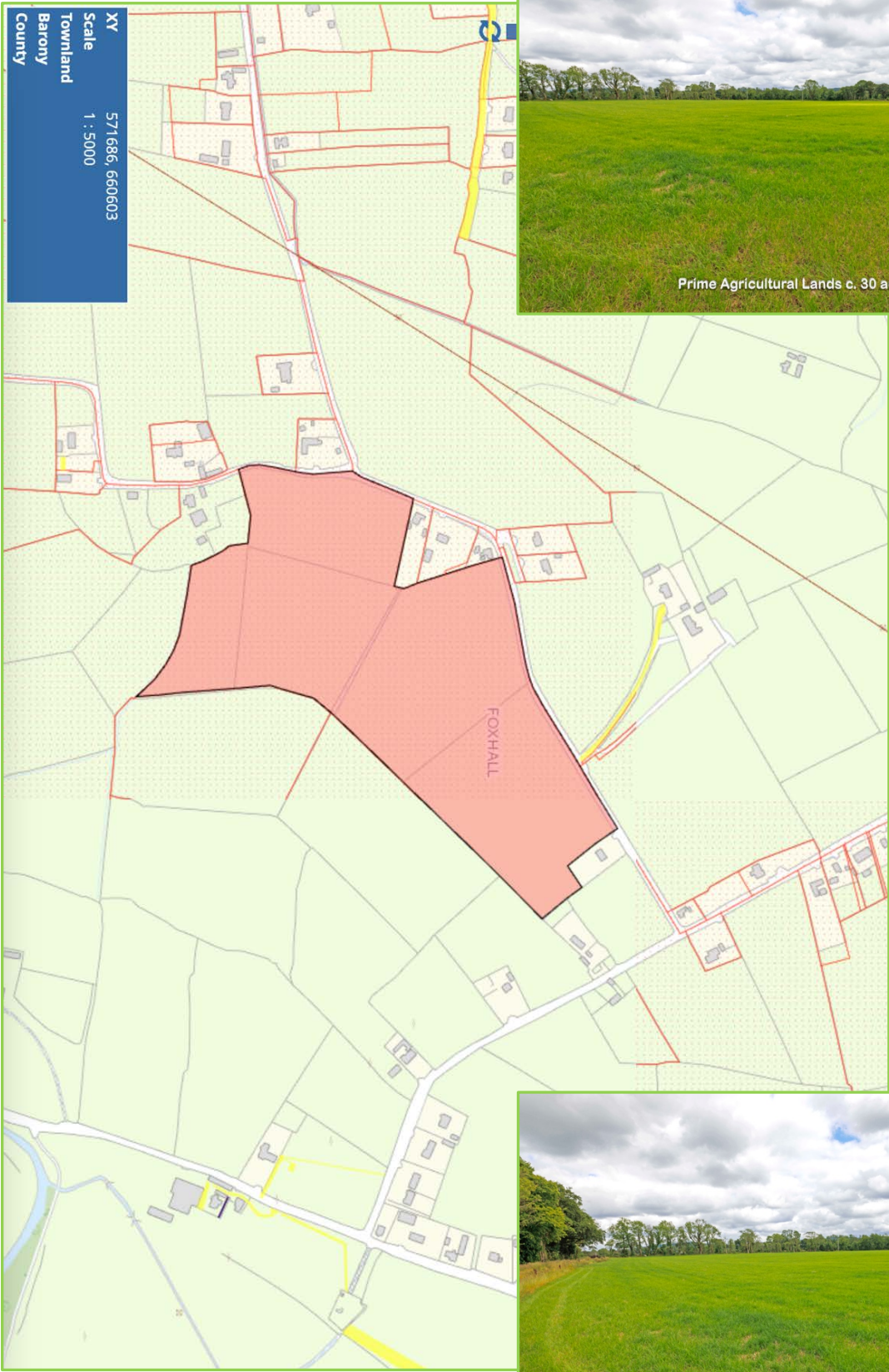
Prime Agricultural Holding c. 30 acres with  
Excellent Road Frontage



[reajohnlee.ie](http://reajohnlee.ie)

PSRA: 002764

# Map:

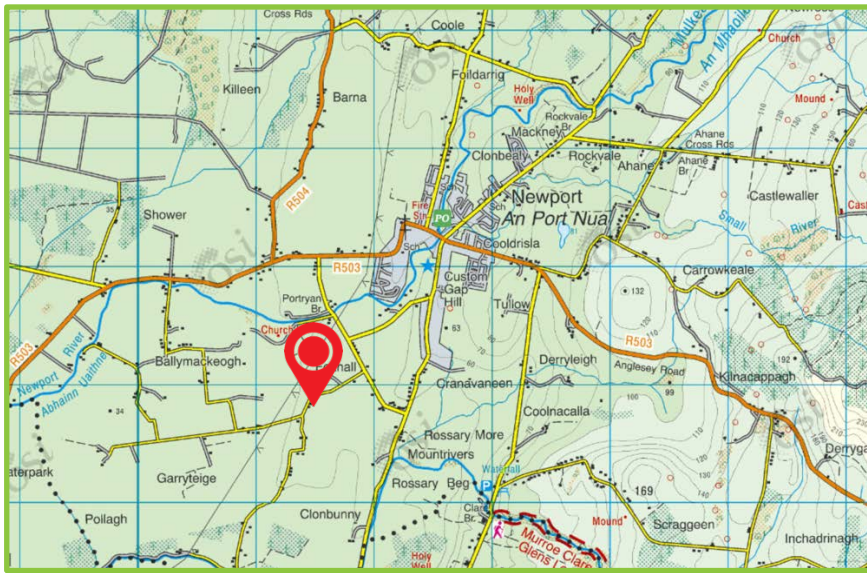


Not to Scale. For Identification Purposes Only.

Call 061 378 121

| Aerial Photo:





## | The Lands

REA John Lee are delighted to bring to the market this Prime Parcel of Roadside Land extending to c. 30 acres on the outskirts of Newport town. The lands have the benefit of extensive road frontage and are conveniently laid out in five fields with a central roadway providing excellent access. There are excellent cattle handling facilities on the property with a private water supply and mains electricity. The lands are recently re-seeded and also have stock-proof fencing around all boundaries. This is one of the best parcels of land to come on the market in the area in recent years in an ideal location and suitable for any farming enterprise. To be offered for sale on Wed 31st July at 3pm in our offices Main Street, Newport. Legal: Michéal Glynn & Co., 98 O'Connell Street, Limerick. Further Details from the agent.

## | LEGAL

Michéal Glynn, 98 O'Connell Street, Limerick. Tel: 061 418 518

## | Viewing

By prior appointment.

## | Directions

Coming into Newport from Limerick take right turn before Centre, Continue straight on a short distance and take right turn, the lands are a short distance on the left.

## | Price: P.O.A.

Public Auction Wed. 31<sup>st</sup> July, @ 3pm in our offices Main Street, Newport.



## | Selling agents

REA John Lee  
Main Street,  
Newport,  
Co. Tipperary.  
V94 FC8Y

T 061 378121  
E [info@reajohnlee.ie](mailto:info@reajohnlee.ie)  
W [www.reajohnlee.ie](http://www.reajohnlee.ie)

## | Sales agent

James Lee  
BSc. Hon's., MRICS MSCSI  
Director

T (086) 235 1221  
E [james@reajohnlee.ie](mailto:james@reajohnlee.ie)

**CONDITIONS TO BE NOTED:** The terms set out herein are by way of partial summary. Intending purchasers should obtain a copy of the Conditions of Sale where the matters are dealt with comprehensively. Particulars and Conditions of sale are available from the Agents and the Solicitors with carriage of sale. REA John Lee for themselves and for the vendors whose agents they are, give notice that: 1) The particulars are set out in this Brochure and Schedule as a general outline for the guidance of intending purchasers and do not constitute part of an offer or contract. 2) All descriptions, dimensions, references to condition and necessary permissions for the use and occupation and other details are given in good faith and are believed to be correct but any intending purchasers should not rely on them as statements or representations of fact but must satisfy themselves by inspection or otherwise as to the correctness of each of them. 3) No person in the employment of REA John Lee has any authority to make representations or warranty whatsoever in relation to this property. All prices quoted are exclusive of VAT