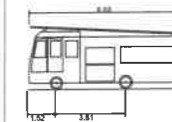


FRANK DROHAN ROAD



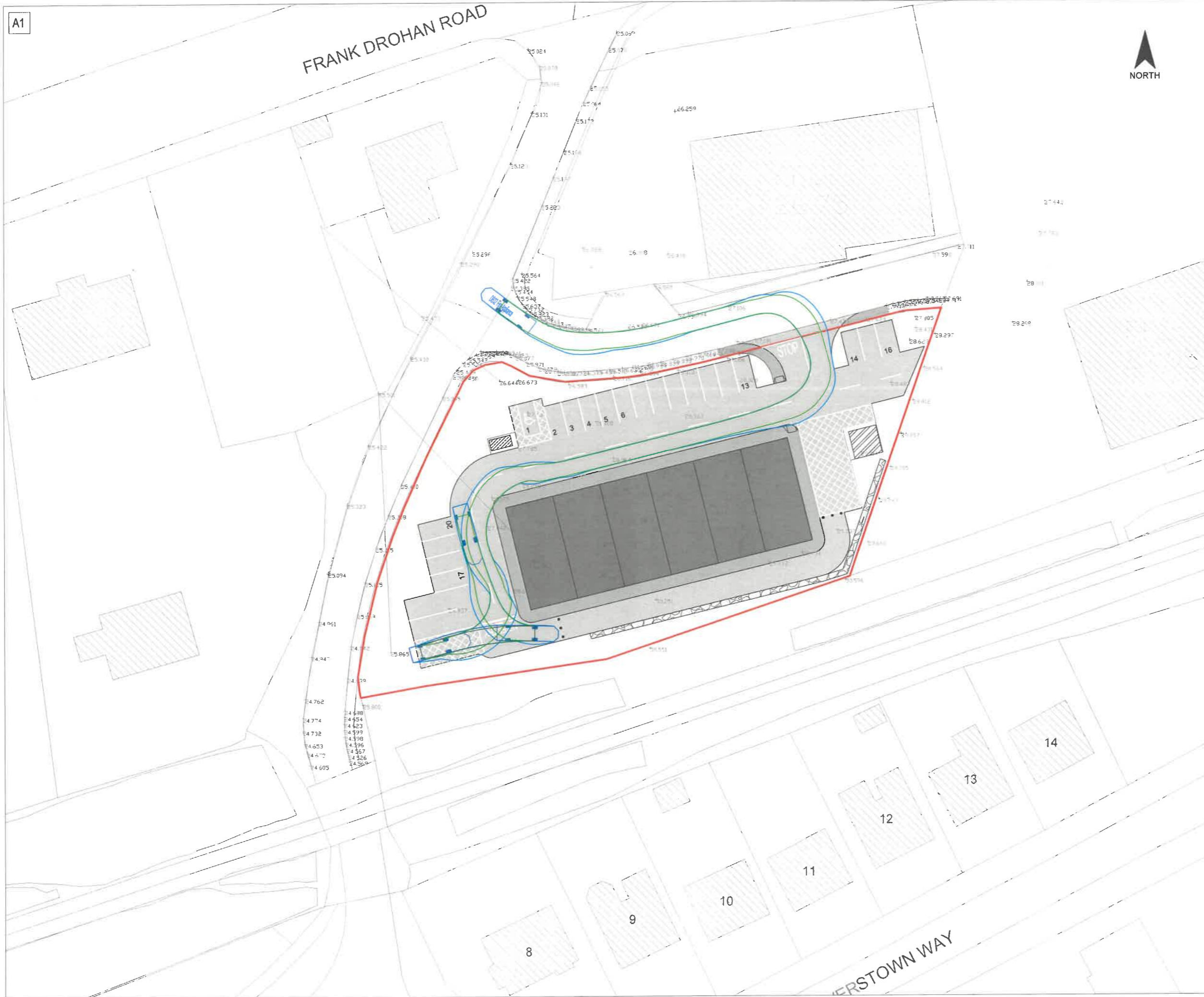
- GENERAL NOTES:**
1. THIS DRAWING IS TO BE READ IN CONJUNCTION WITH ALL RELEVANT ARCHITECTS, ENGINEERS, SUB-CONTRACTORS AND SPECIALISTS DRAWINGS, SPECIFICATIONS AND SCOPE OF WORKS DRAWINGS.
 2. DO NOT SCALE. USE FIGURED DIMENSIONS ONLY.
 3. ALL LEVELS ARE IN METRES, ALL DIMENSIONS ARE IN MILLIMETRES.
 4. ANY DISCREPANCIES TO BE REPORTED TO THE ENGINEER IMMEDIATELY.

SWEPT PATH ANALYSIS LEGEND



DB32 Fire Appliance
 Overall Length 8.680m
 Overall Width 2.180m
 Overall Body Height 3.452m
 Min Body Ground Clearance 0.337m
 Max Track Width 2.121m
 Lock-to-lock time 6.0s
 Curb to Curb Turning Radius 7.910m

- VEHICLE BODY ENVELOPE FORWARD
- VEHICLE CHASSIS ENVELOPE FORWARD
- VEHICLE BODY ENVELOPE REVERSE
- VEHICLE CHASSIS ENVELOPE REVERSE



No.	Date	Description	Drawn	Checked	Approved
P02	18.01.24	ISSUED FOR IT RESPONSE	AK	ND	ND
P01	24.02.23	ISSUED FOR PLANNING	AK	ND	ND

Project Status: **PLANNING**

Client: **JOE MULCAHY**

NJD CONSULTING ENGINEERS LTD.
 Civil and Structural Engineers
www.njd.ie

Clonmel, Co. Tipperary
 052 616 8810 | info@njd.ie

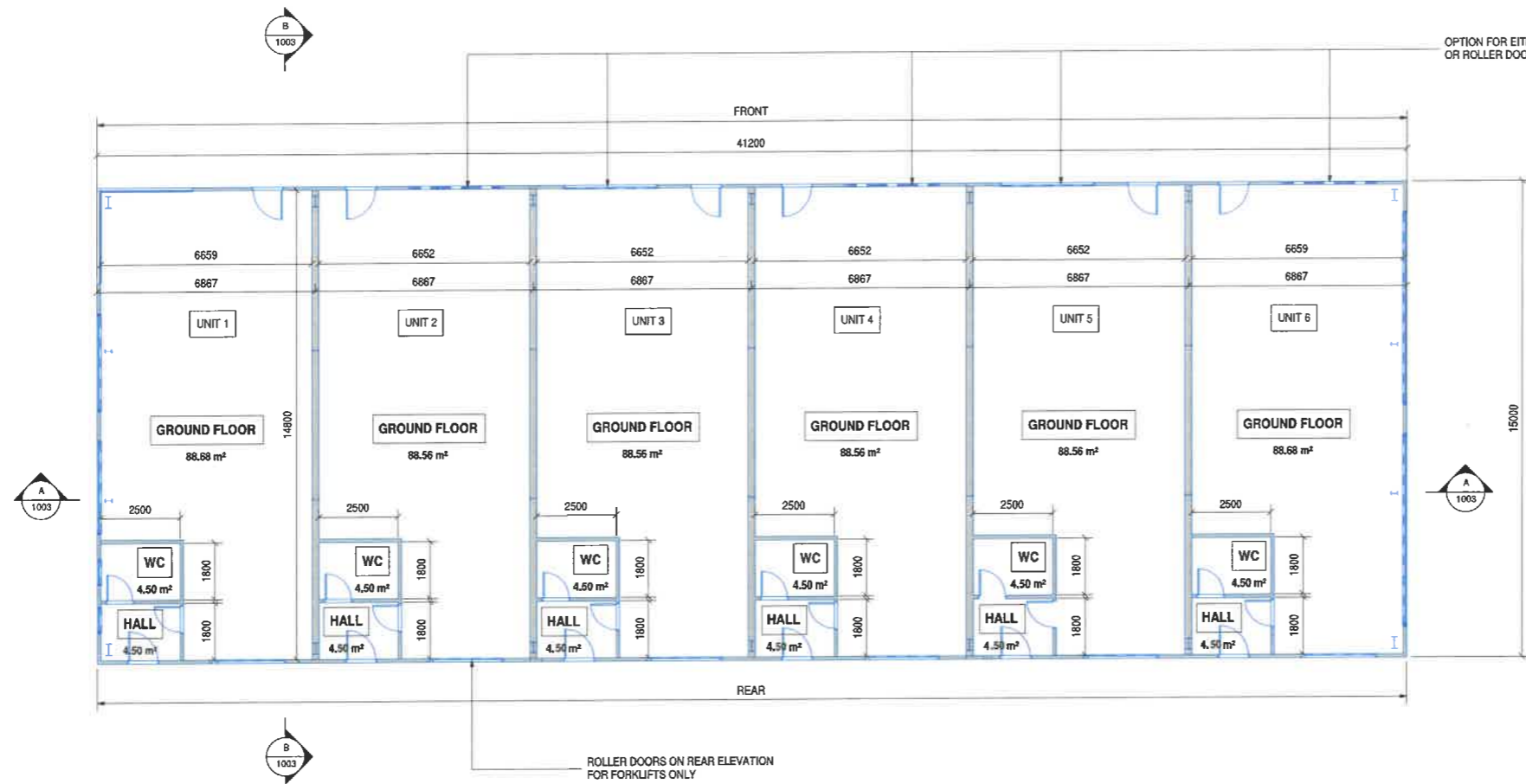
This drawing is the property of NJD Consulting Engineers Ltd. and shall not be used, reproduced or disclosed to anyone without the prior written permission of NJD and shall be returned upon request.

Project Name: **LIGHT INDUSTRIAL UNITS AT POWERSTOWN ROAD, KNOCKAUNCOURT, CLONMEL, CO. TIPPERARY**

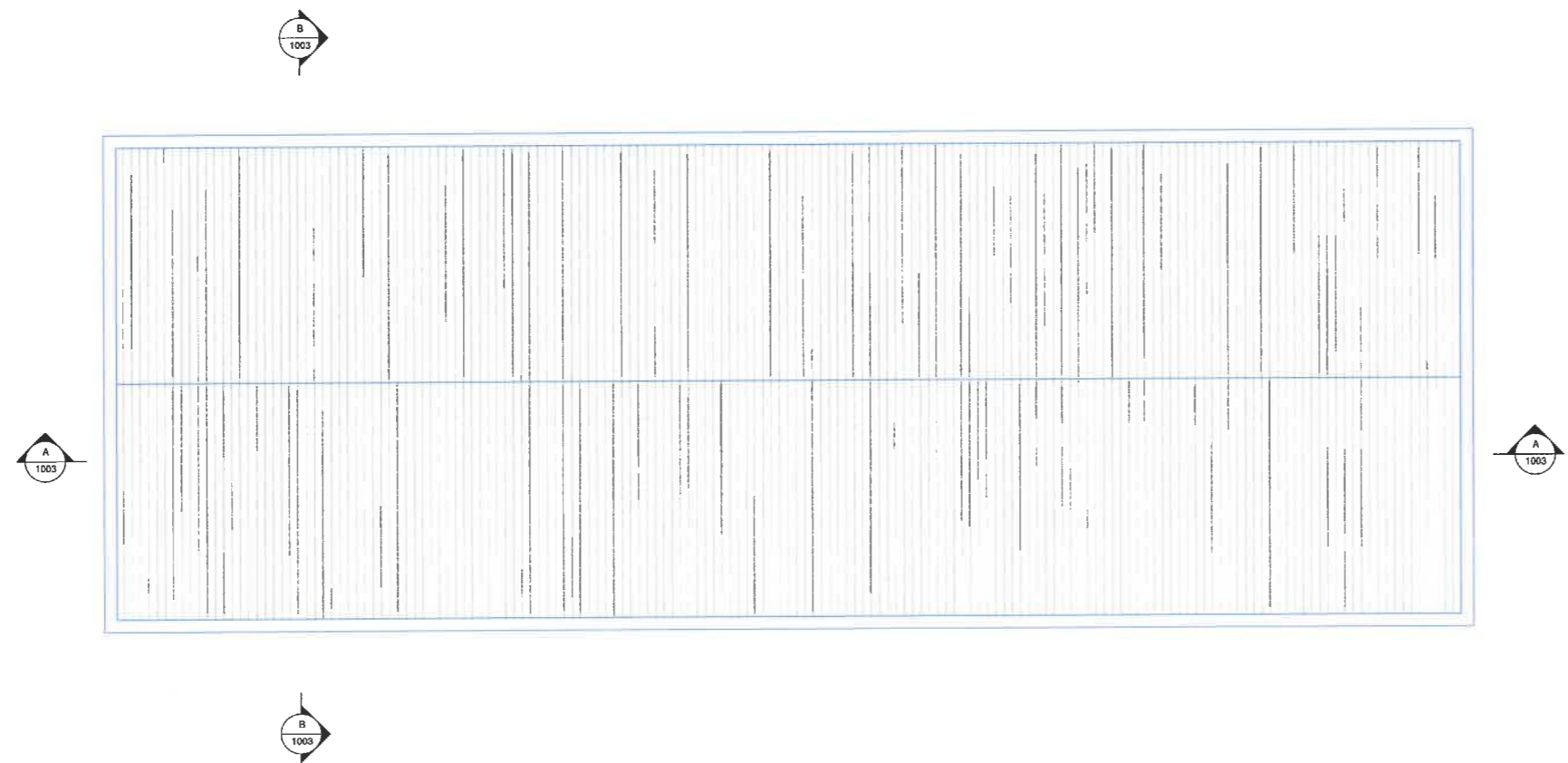
Drawing Title: **SWEPT PATH ANALYSIS FIRE TENDER**

Drawn: A.KINSELLA	Checked: N.DENNEHY	Approved: N.DENNEHY	Date: 18.01.24
Project No: 22012	At Scale: 1:250	Discipline: CIVIL	
Drawing No: 22012-NJD-00-XX-DR-C-0130			Rev: P02

A1



GROUND FLOOR
SCALE: 1 : 100



ROOF
SCALE: 1 : 100



- General Notes:
1. This drawing is to be read in conjunction with all relevant architects, engineers, sub-contractors and specialists drawings, specifications and scope of works drawings.
 2. Do not scale. Use figured dimensions only.
 3. All levels are in metres, all dimensions are in millimetres.
 4. Any discrepancies to be reported to the engineer immediately.

No.	Date	Description	Drawn	Checked	Approved
P02	18.01.24	ISSUED FOR FURTHER INFORMATION	J.B.	N.D.	N.D.
P01	24.02.23	ISSUED FOR PLANNING	J.B.	N.D.	N.D.

Project Status: **PLANNING**

Client: **JOE MULCAHY**

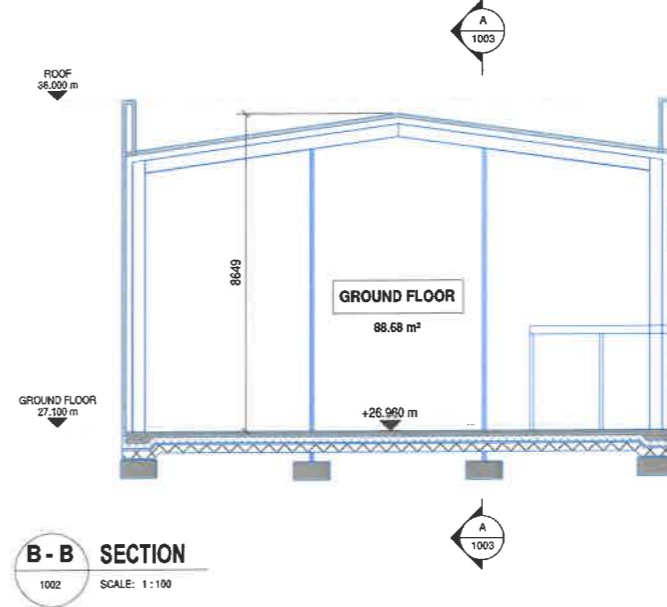
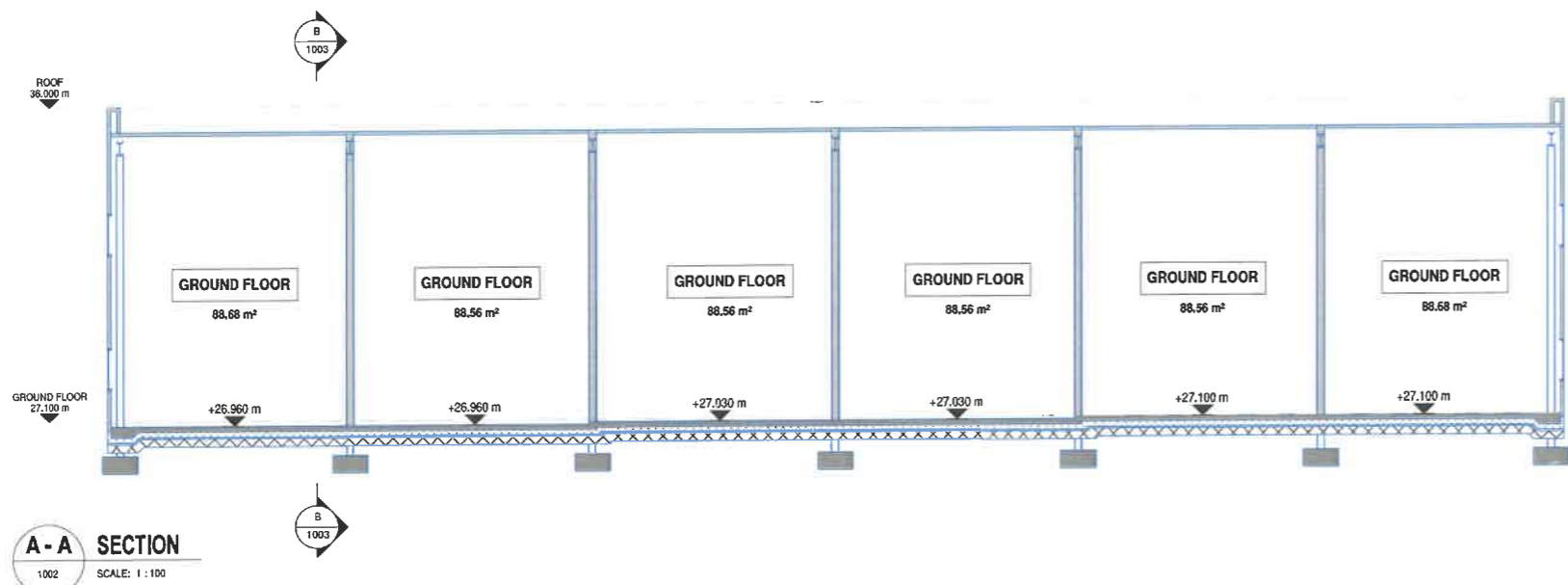
NJD CONSULTING ENGINEERS LTD.
Civil and Structural Engineers
www.njd.ie
Clonmel, Co. Tipperary
052 514 8810 | info@njd.ie

Project Name:
LIGHT INDUSTRIAL UNITS AT POWERSTOWN ROAD, KNOCKAUNCOURT, CLONMEL, CO. TIPPERARY

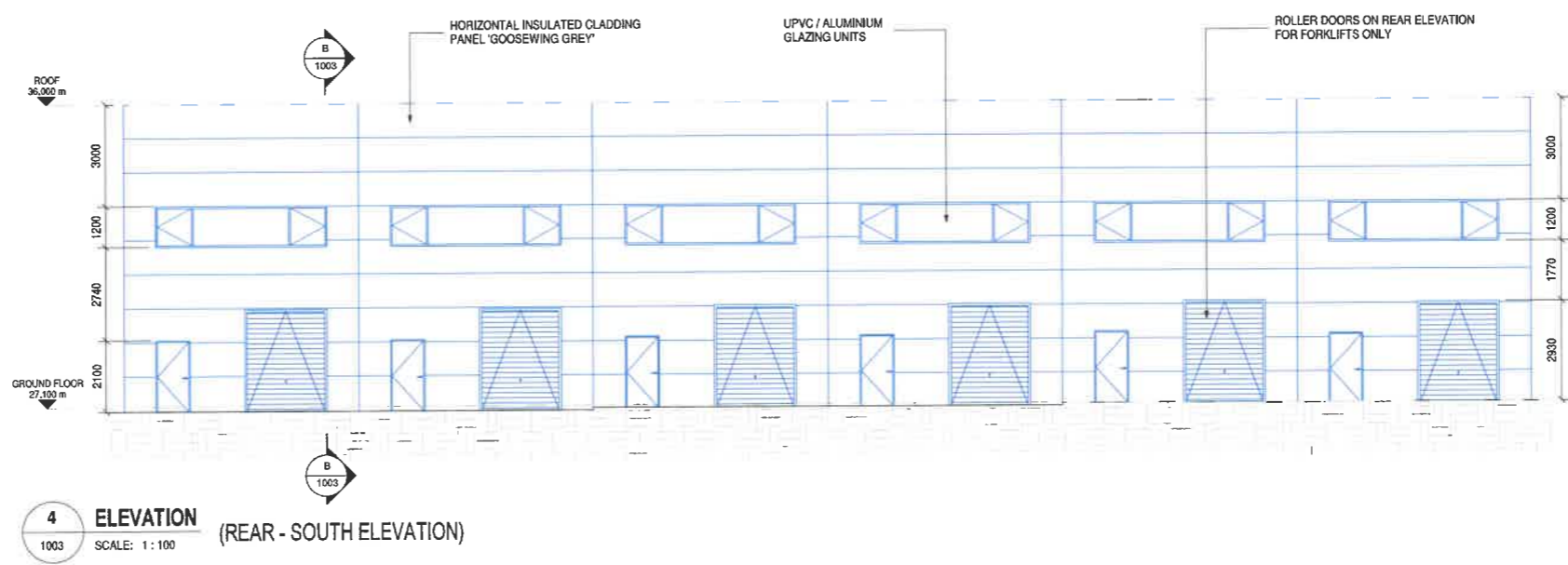
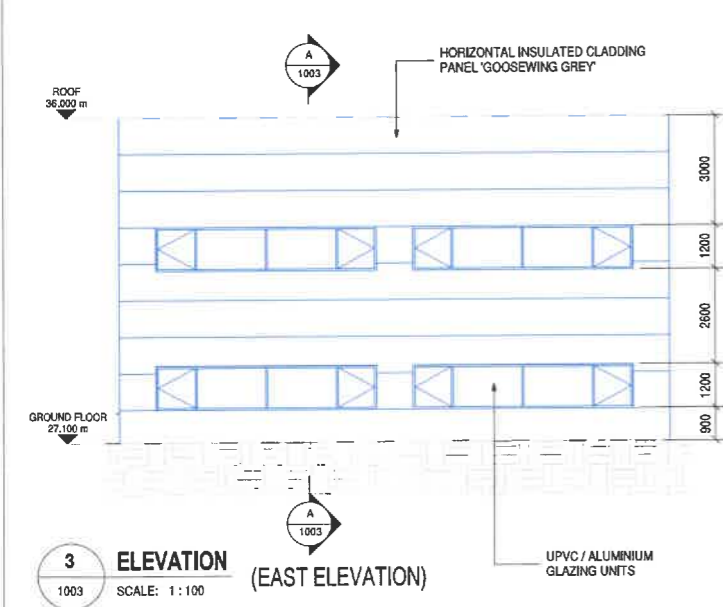
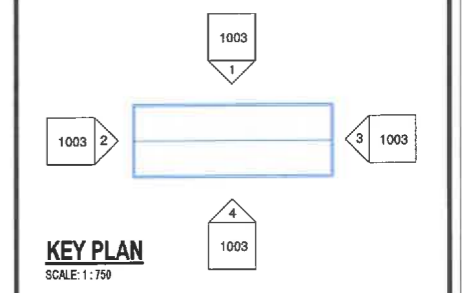
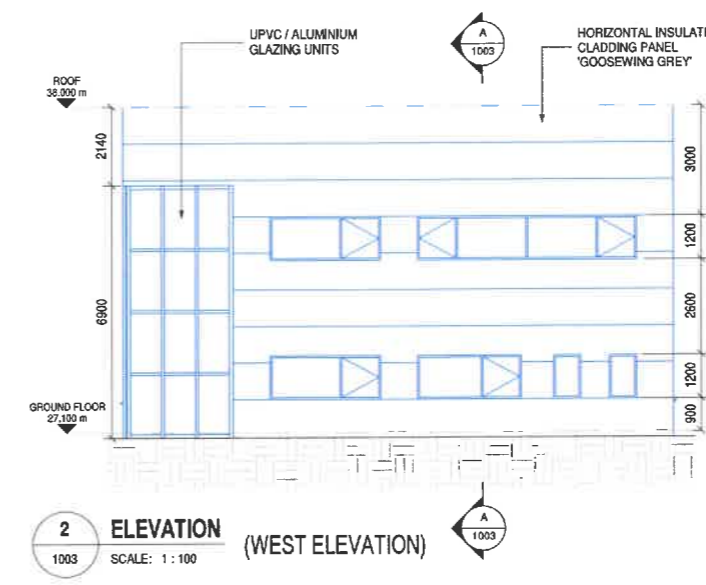
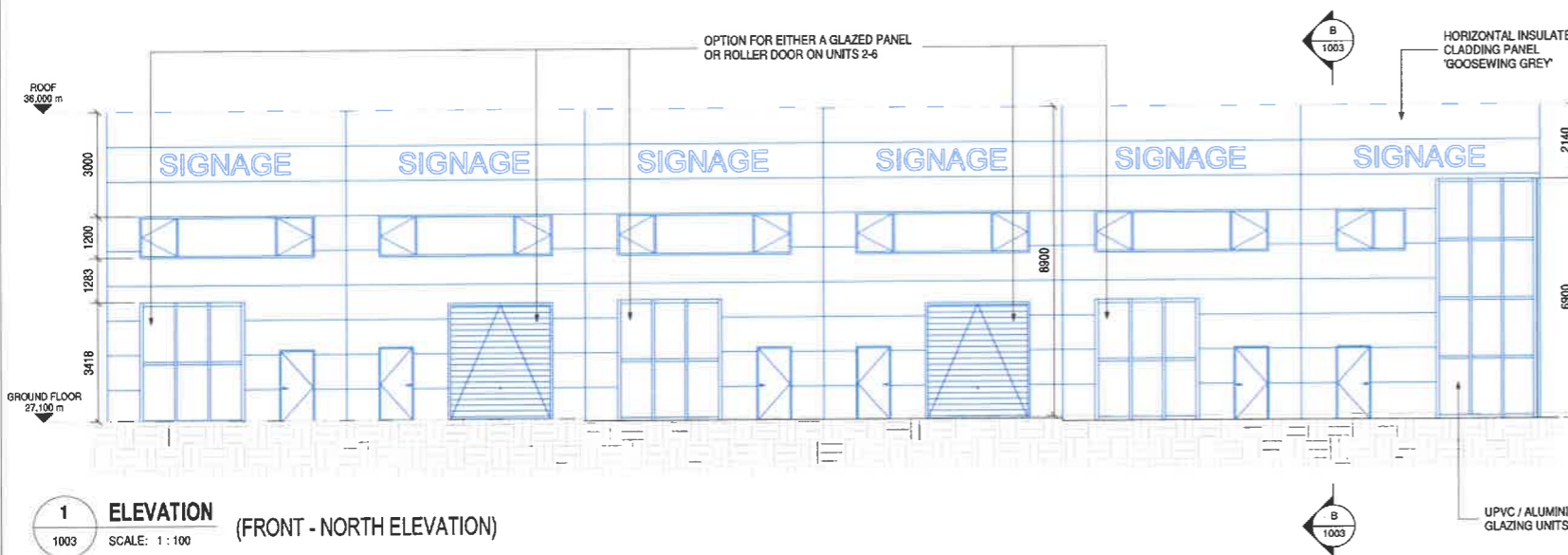
Drawing Title:
**GENERAL ARRANGEMENTS
PROPOSED PLANS
UNITS 1 TO 6**

Drawn: J.BOYLE	Checked: N.DENNEHY	Approved: N.DENNEHY	Date: 18.01.24
Project No: 22.012	A1 Scale: 1 : 100	Discipline: ARCHITECTURAL	Rev: P02
Drawing No: 22.012 - NJD - V2 - ZZ - DR - A - 1002			Rev: P02

A1



- General Notes:
1. This drawing is to be read in conjunction with all relevant architects, engineers, sub-contractors and specialists drawings, specifications and scope of works drawings.
 2. Do not scale. Use figured dimensions only.
 3. All levels are in metres, all dimensions are in millimetres.
 4. Any discrepancies to be reported to the engineer immediately.



No.	Date	Description	Drawn	Checked	Approved
P01	18.01.24	ISSUED FOR FURTHER INFORMATION	J.B	N.D	N.D

Project Status: **PLANNING**

Client: **JOE MULCAHY**

NJD CONSULTING ENGINEERS LTD.
Civil and Structural Engineers
www.njd.ie
Clonmel, Co. Tipperary
052 614 8810 | info@njd.ie

This drawing is the property of NJD Consulting Engineers Ltd. and shall not be reproduced or disclosed to any other person without the prior written consent of NJD and shall be held upon request.

Project Name:
LIGHT INDUSTRIAL UNITS AT POWERSTOWN ROAD, KNOCKAUNCOURT, CLONMEL, CO. TIPPERARY

Drawing Title:
**GENERAL ARRANGEMENTS
PROPOSED SECTIONS & ELEVATIONS
UNITS 1 TO 6**

Drawn: J.BOYLE	Checked: N.DENNEHY	Approved: N.DENNEHY	Date: 18.01.24
Project No: 22.012	A1 Scale: As indicated	Discipline: ARCHITECTURAL	
Drawing No.: 22.012 - NJD - V2 - ZZ - DR - A - 1003	Rev: P01		