

Architectural harmony on the River Boyne

The Cottage, High Road, Mornington, Co Meath

savills



Architectural harmony on the River Boyne

The Cottage, High Road, Mornington, Co Meath

savills



Architectural harmony on the River Boyne

The Cottage, High Road, Mornington, Co Meath



About this property

A rare and refined offering, The Cottage presents a masterclass in architectural renewal- an original c.1890 stone-cut fisherman's cottage, sensitively restored and extended to embrace contemporary living. Set on a south-facing plot overlooking the River Boyne estuary, this home combines heritage charm with modern sustainability, using locally sourced natural materials throughout.

The extension is deliberately understated, allowing the authentic stonework and traditional proportions to remain the architectural focus. Inside, sandstone flooring flows through the living spaces, warmed by underfloor, oil-fired heating. A Clearview stove anchors the principal reception room, while the handmade kitchen by Joey Lawlor - featuring a Stanley range and bespoke cabinetry - opens directly to the garden, ideal for relaxed dining and entertaining.

Accommodation is flexible and thoughtfully zoned: three to four bedrooms and three bathrooms, including a principal suite with walk-in dressing room and ensuite. Two further bedrooms feature walk-in wet rooms, while a fourth room offers versatility as a study, snug or additional bedroom.



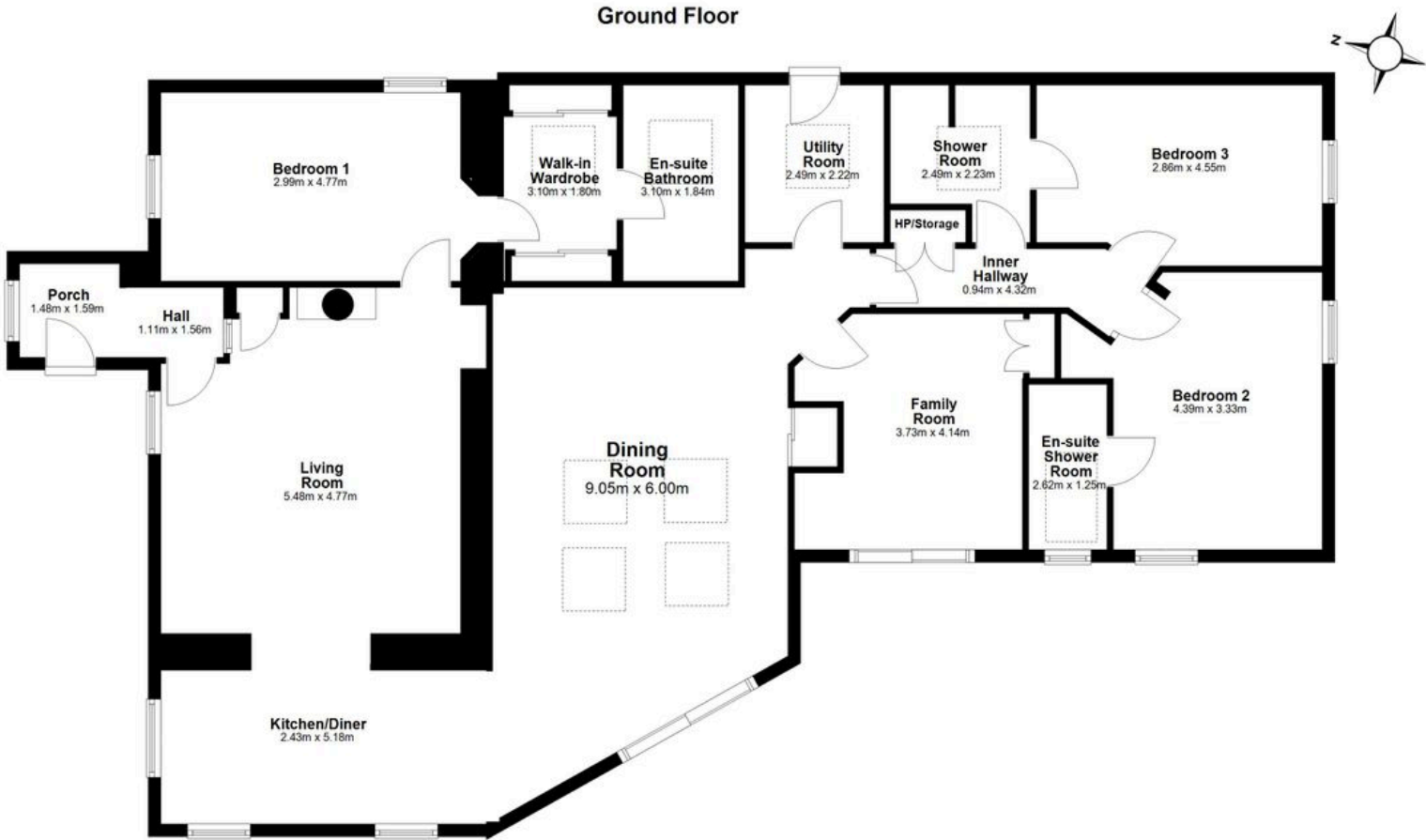
Architectural harmony on the River Boyne

The Cottage, High Road, Mornington, Co Meath

savills



Plans



Total area: approx. 175.6 sq. metres
The Cottage, High Road, Mornington, Co. Meath A92 X2Y4

Architectural harmony on the River Boyne

The Cottage, High Road, Mornington, Co Meath

savills



Local Area

Mornington itself is a charming coastal enclave, known for its quiet beaches, scenic walks and close proximity to the historic town of Drogheda. The area blends rural calm with urban convenience, offering a range of local amenities including cafés, schools, and shops, while the nearby seaside villages of Bettystown and Laytown provide further leisure and lifestyle options.



Architectural harmony on the River Boyne

The Cottage, High Road, Mornington, Co Meath



Property Details

Key Features

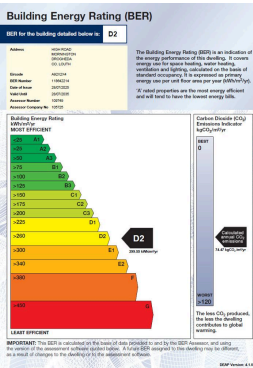
- Restored c.1890 stone cottage with contemporary extension
- South-facing orientation with uninterrupted estuary views over the River Boyne
- Bespoke kitchen with handcrafted cabinetry
- Landscaped garden with two patios and orchard
- Private, elevated site off the main road
- Easy access to Dublin City and Airport

Services & Additional Information

- Oil fired central heating
- Mains water
- Mains sewerage
- Broadband

BER

BER Rating = D2



Architectural harmony on the River Boyne

The Cottage, High Road, Mornington, Co Meath



Enquire



Cianan Duff

Dublin - Country

+353 (0) 86 386 1466

cianan.duff@savills.ie

More Information



[View on website](#)



[View Digital Brochure](#)



[Property Search](#)

Viewing strictly by appointment

Property Ref: DUY250214

Residential & Country

33 Molesworth Street, D02 CP04

+353 (0) 1 618 1300



Important Notice: Savills, its clients and any joint agents give notice that 1: They are not authorised to make or give any representations or warranties in relation to the property either here or elsewhere, either on their own behalf or on behalf of their client or otherwise. They assume no responsibility for any statement that may be made in these particulars. These particulars do not form part of any offer or contract and must not be relied upon as statements or representations of fact. 2: Any areas, measurements or distances are approximate. The text, photographs and plans are for guidance only and are not necessarily comprehensive. It should not be assumed that the property has all necessary planning, building regulation or other consents and Savills have not tested any services, equipment or facilities. Purchasers must satisfy themselves by inspection or otherwise. *powered by* **FluoPro**