

# For Sale

Asking Price: €249,000



4 Strand View, Cluin, Allihies, Co. Cork  
P75 EE37

BER C2

[sherryfitz.ie](http://sherryfitz.ie)



Beautifully presented, 3 bedroom semi-detached house with stone finished private patio to rear and side, enjoying an excellent location within the popular West Cork coastal village of Allihies. The property is designed for both residential and holiday home use.

The house is bright, spacious and finished to an excellent standard. The property has 1.075 square feet approx. of living space and enjoys many features including pvc double glazed windows, solid fuel stove fireplace, tile and timber flooring throughout, spacious patio yard to the rear and generous side patio seating space.

The accommodation includes entrance hall, sitting room, kitchen/dining room and guest wc downstairs. There are 3 bedrooms, one having the benefit of an ensuite, and a family bathroom on upper floor. The attic is floored in the property.

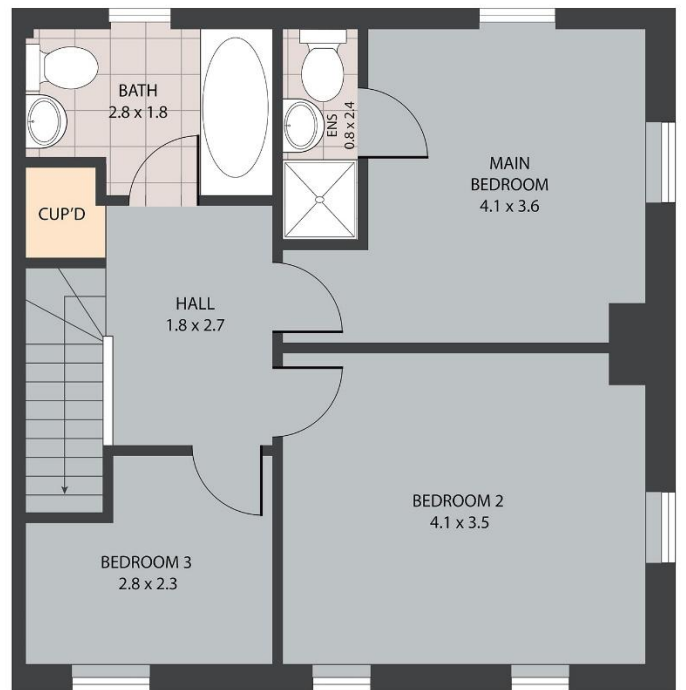
4 Strand View is located in the centre of Allihies Village and convenient to all the excellent facilities that the village offers. This property is also close to the sandy Allihies Beach and the world renowned Dzogchen Beara Retreat Centre.

The Beara Peninsula is known for its scenery and walking trails including many historical and archaeological sites. The Beara Peninsula's principal town, the fishing port of Castletownbere, is just a 20 minute drive.





GROUND FLOOR



FIRST FLOOR

Cluin, Allihies P75 EE37  
 TOTAL APPROX. FLOOR AREA 103.24 SQ M

Whilst every attempt has been made to ensure the accuracy of the floor plan contained here, measurements of doors, windows, rooms and any other items are approximate and no responsibility is taken for any error, omission, or misstatement. This plan is for illustrative purposes only and should be used as such by any prospective purchaser.



**NEGOTIATOR**  
Olivia Hanafin  
Sherry FitzGerald O'Neill  
Wolfe Tone Square, Bantry,  
Co Cork.  
T: 027 31030  
E: olivia@sfoneill.ie

**Viewing**  
Strictly by prior Appointment

**ENERGY RATING**  
Rating: C2  
BER No.: 115001547  
EPI: 187.09 kWh/m<sup>2</sup>/yr

[sherryfitz.ie](http://sherryfitz.ie)  
[sfoneill.ie](http://sfoneill.ie)  
[daft.ie](http://daft.ie)  
[myhome.ie](http://myhome.ie) [daft.ie](http://daft.ie)  
[rightmove.co.uk](http://rightmove.co.uk)

**CONDITIONS TO BE NOTED:** A full copy of our general brochure conditions can be viewed on our website at <http://www.sherryfitz.ie/terms>, or can be requested from your local Sherry FitzGerald office. We strongly recommend that you familiarise yourself with these general conditions. While care has been taken to ensure that information contained in Sherry FitzGerald publications is correct at the time of publication, changes in circumstances after the time of publication may impact on the accuracy of this. PSRA Registration No. 004158