

# For Sale

By Public Auction

Guide Price

€P.O.A.

# REA

## JOHN LEE

## RESIDENTIAL FARM HOLDING



For Sale by Public Auction on Wed. 25<sup>th</sup> Sept. @ 3pm  
in our offices Main Street, Newport, Co. Tipperary  
Online bidding via [www.islauctions.com](http://www.islauctions.com)

REA  
JOHN LEE

## BALLYARD & CRAGG

Newport, Co. Tipperary.

Agricultural Holding c. 143 acres with Two  
Dwellings & Range of Farm Buildings.



[reajohnlee.ie](http://reajohnlee.ie)

PSRA: 002764



Map:



Not to Scale. For Identification Purposes Only.

Call 061 378 121

# LOTS:

Lot A: Land c. 12.87 ha.  
Lot B: Forestry c. 12.92 ha.  
Lot AB: Lot A & B combined;

Lot D: Land c. 12.52 ha.

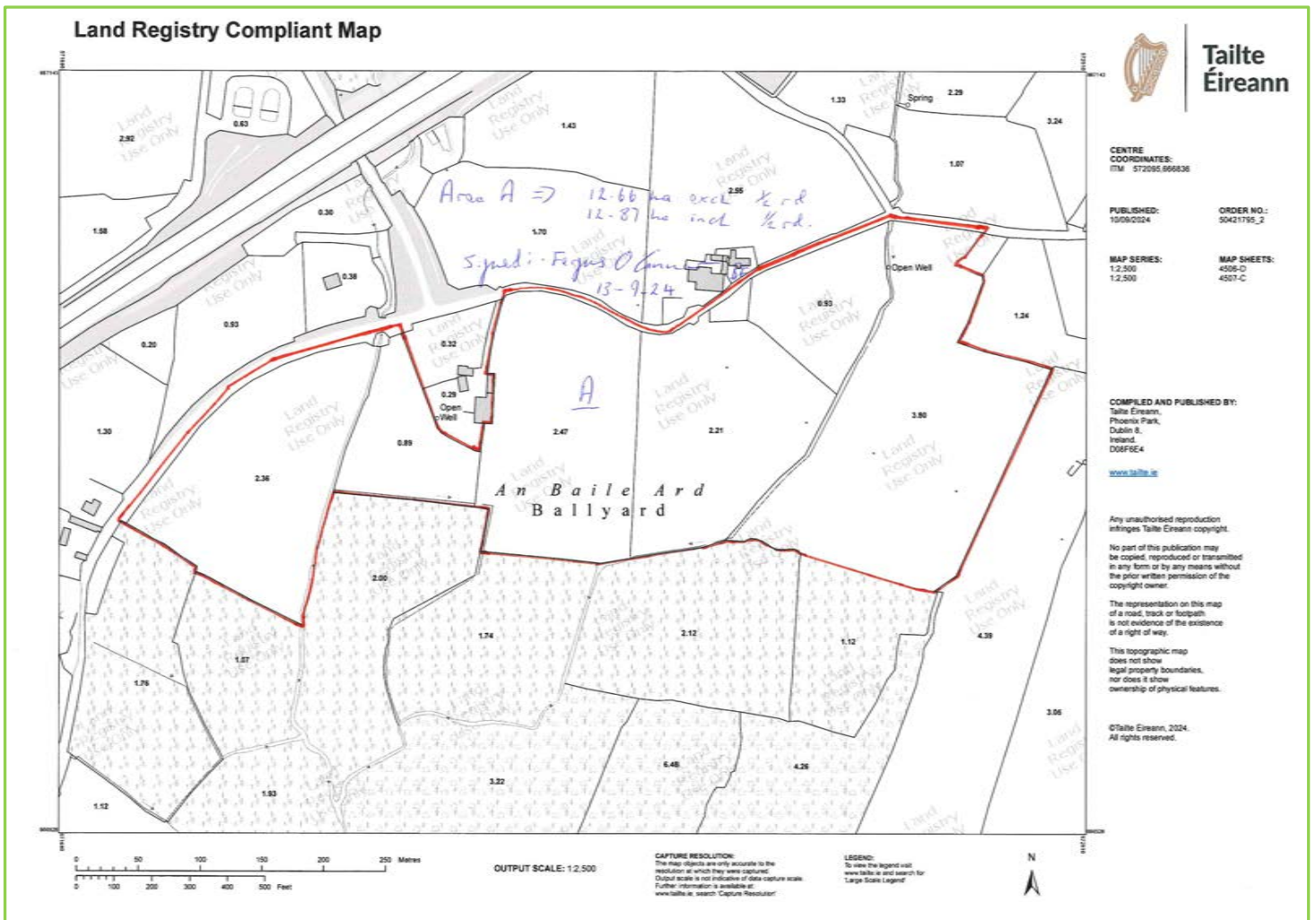
Lot F: Land c. 10.47 ha.  
Lot G: Residence on c. 0.26 ha.  
Lot FG: Lot F & G combined;

Lot I: Land c. 1.58 ha.  
Lot J: Land c. 0.30 ha.

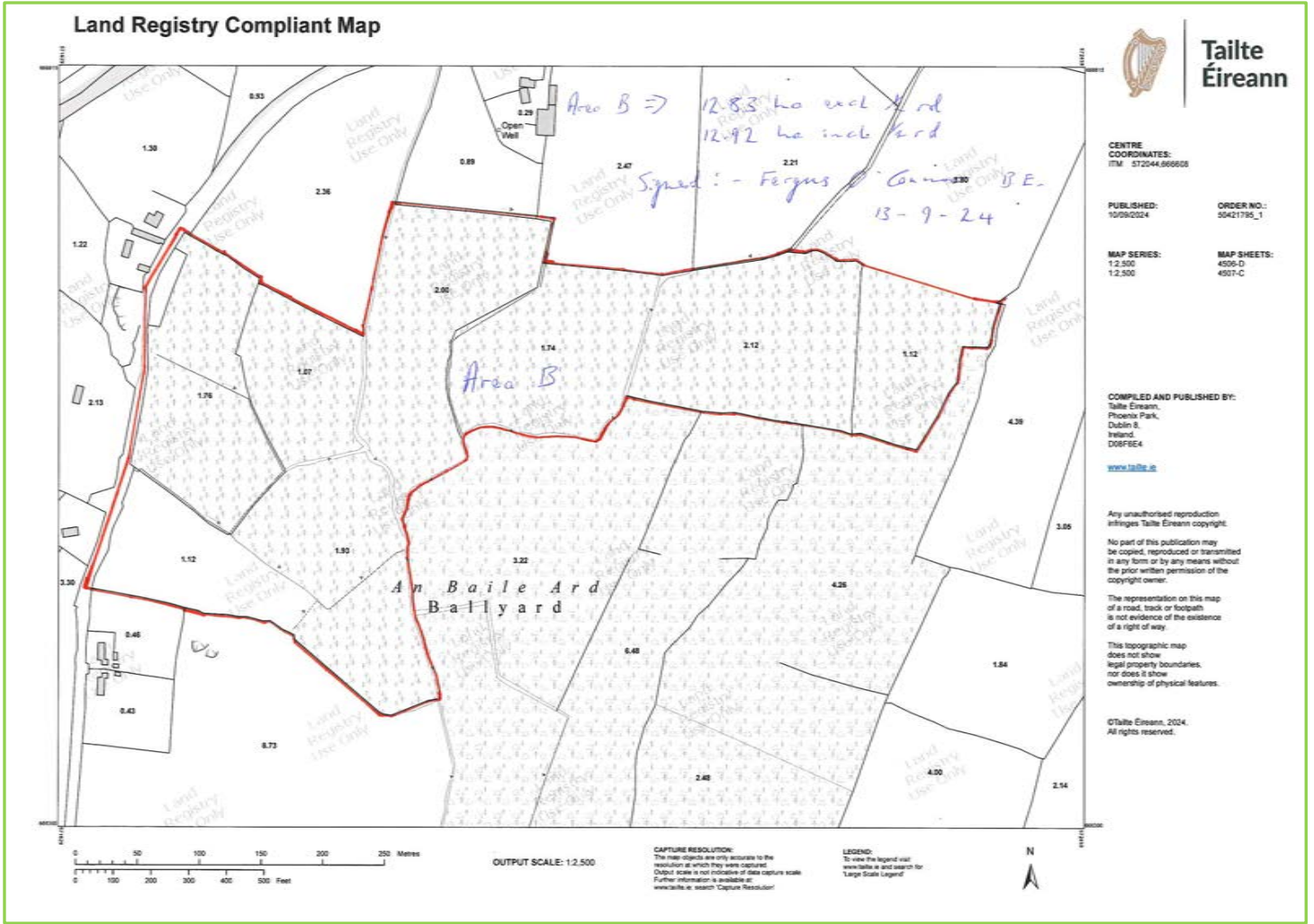
Lot K: Residence on c. 0.41 ha.  
Lot L: Lands c. 6.63 ha.  
Lot KL: Lot K & L combined.

All Maps for Identification Only. Not to scale.

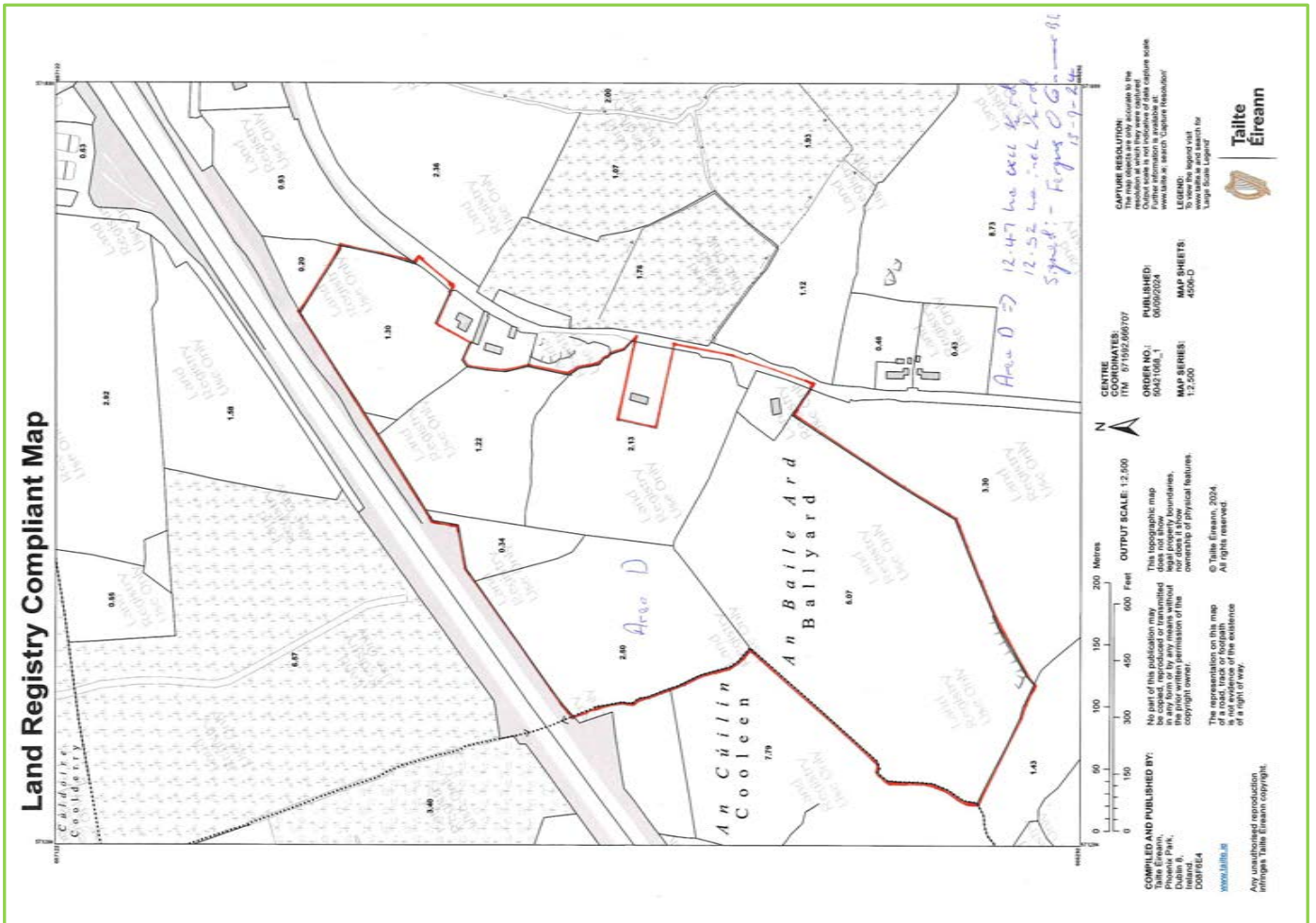
## LOT A: c. 12.87 ha. (c. 31.8 acres)



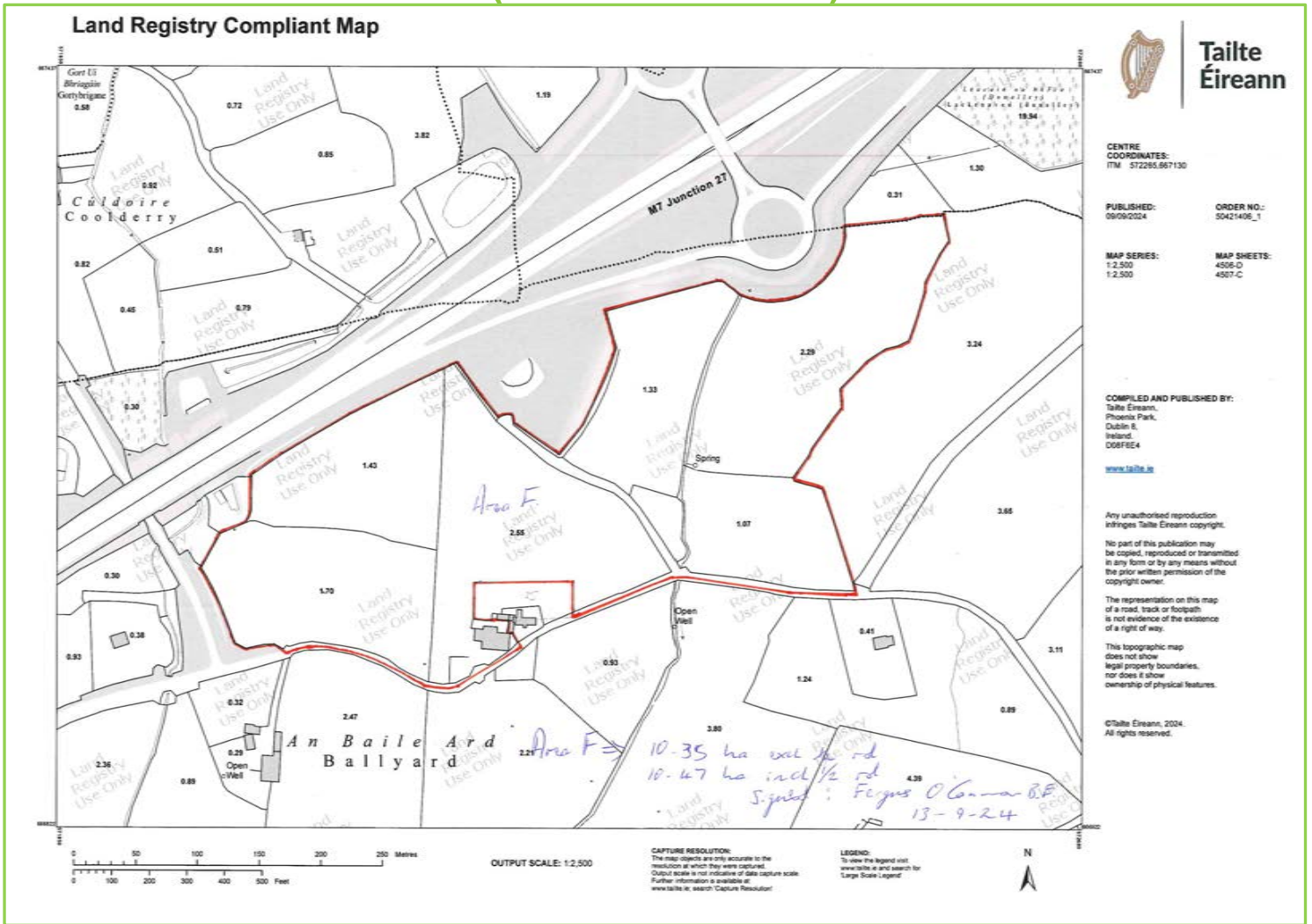
# LOT B: c. 12.92 ha. (c. 31.92 acres)



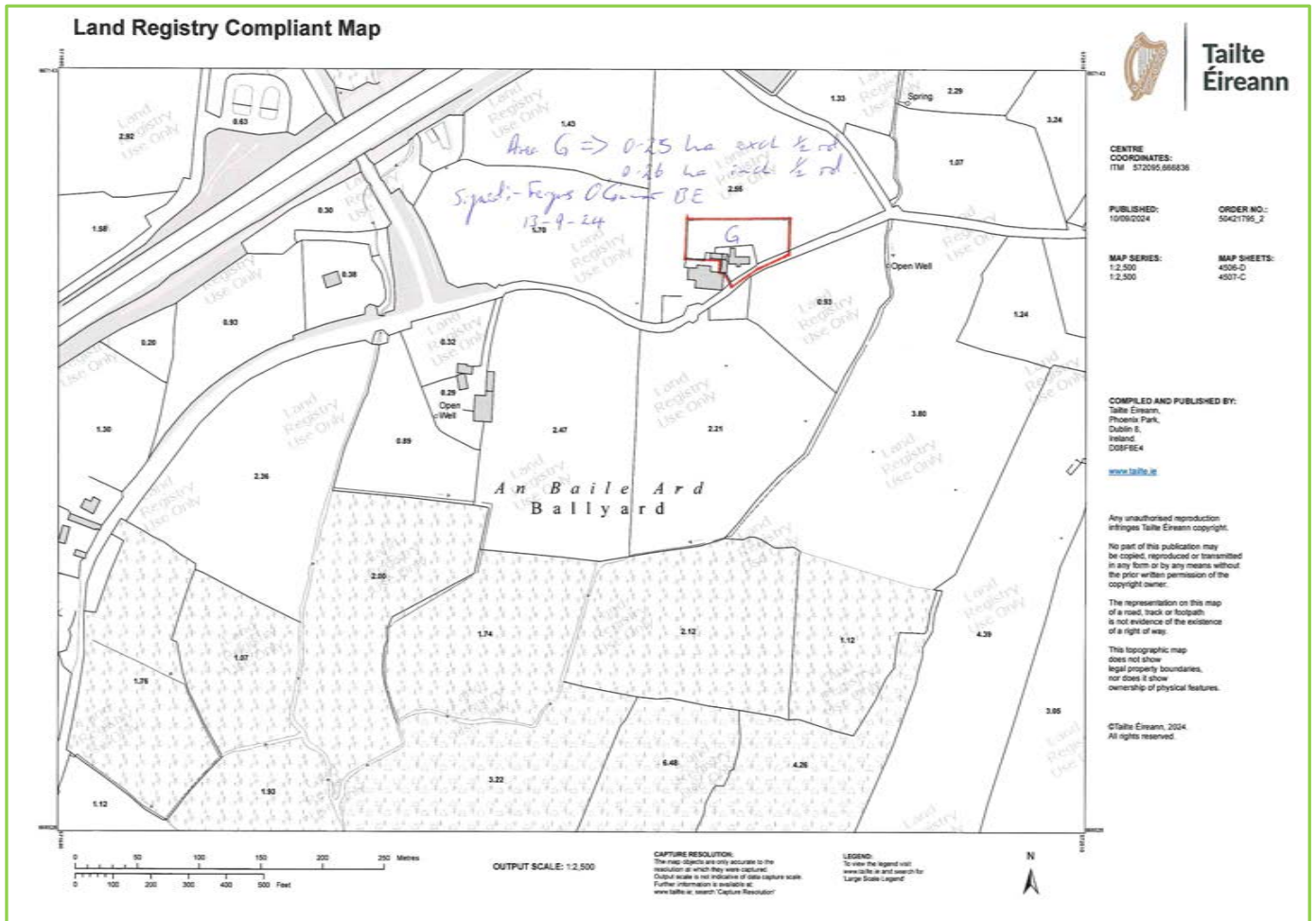
# LOT D: c. 12.52 ha. (c. 30.93 acres)



# LOT F: c. 10.47 ha. (c. 25.87 acres)



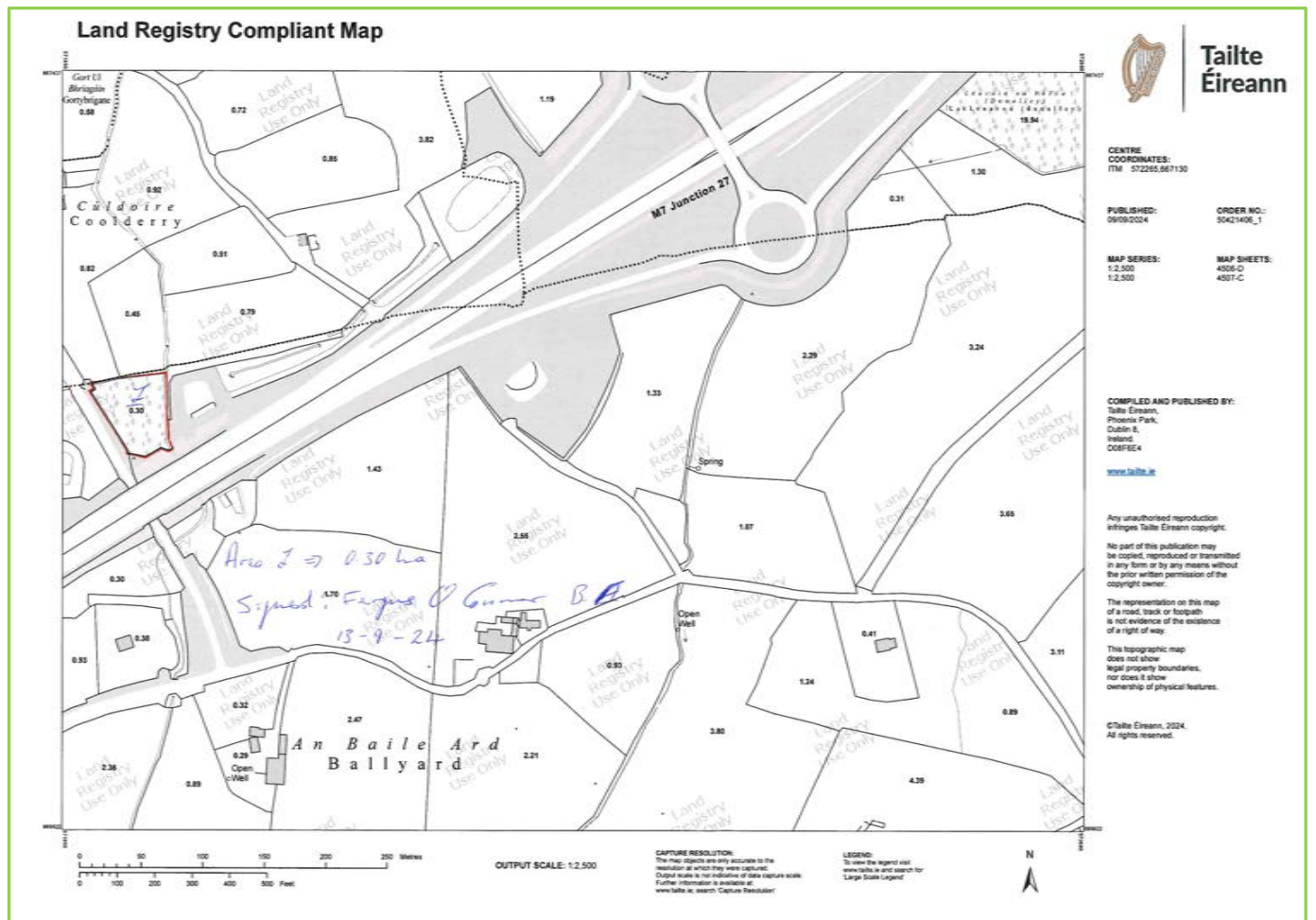
# LOT G: c. 0.26 ha. (c. 0.64 acres)



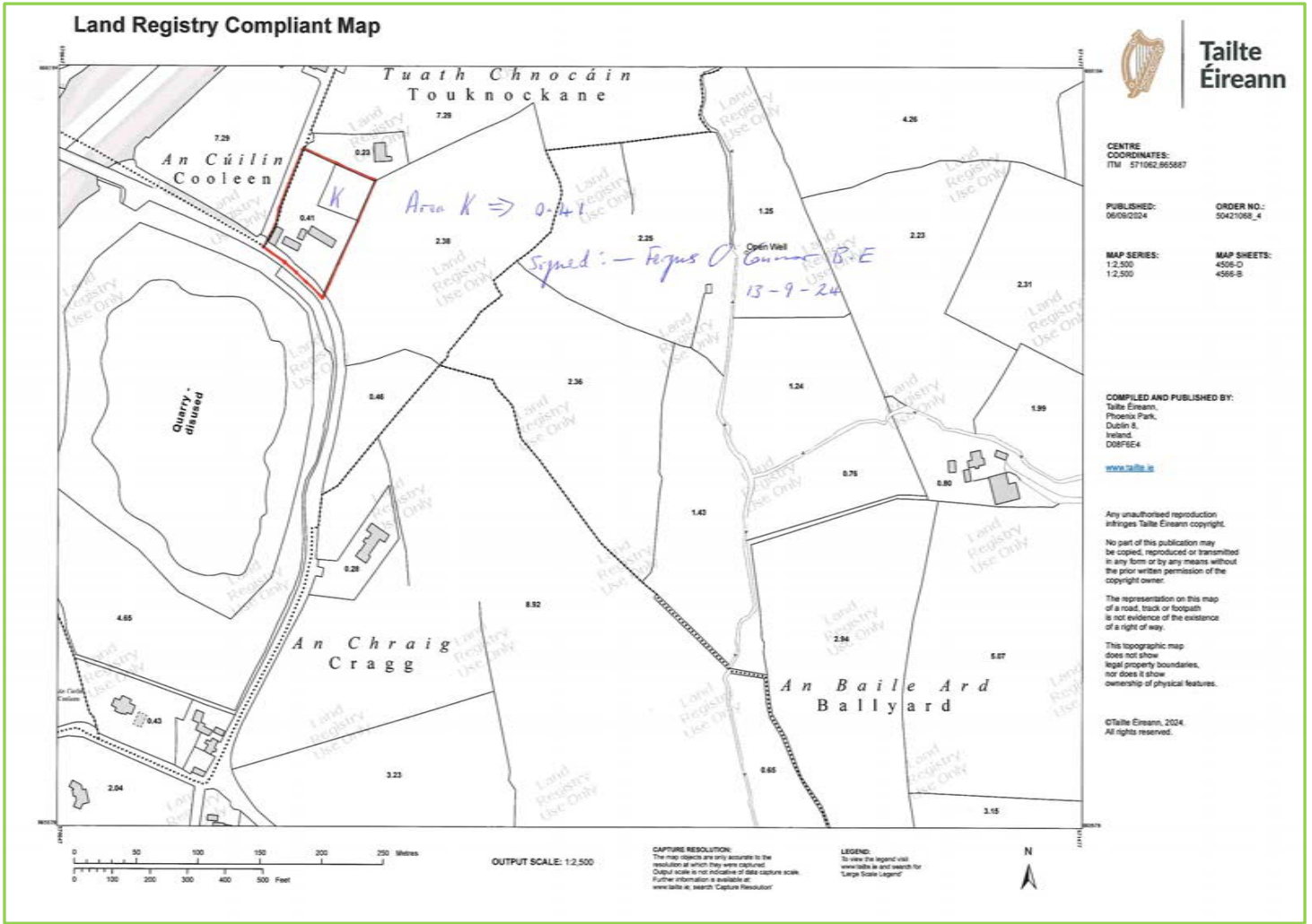
# LOT I: c. 1.58 ha. (c. 3.90 acres)



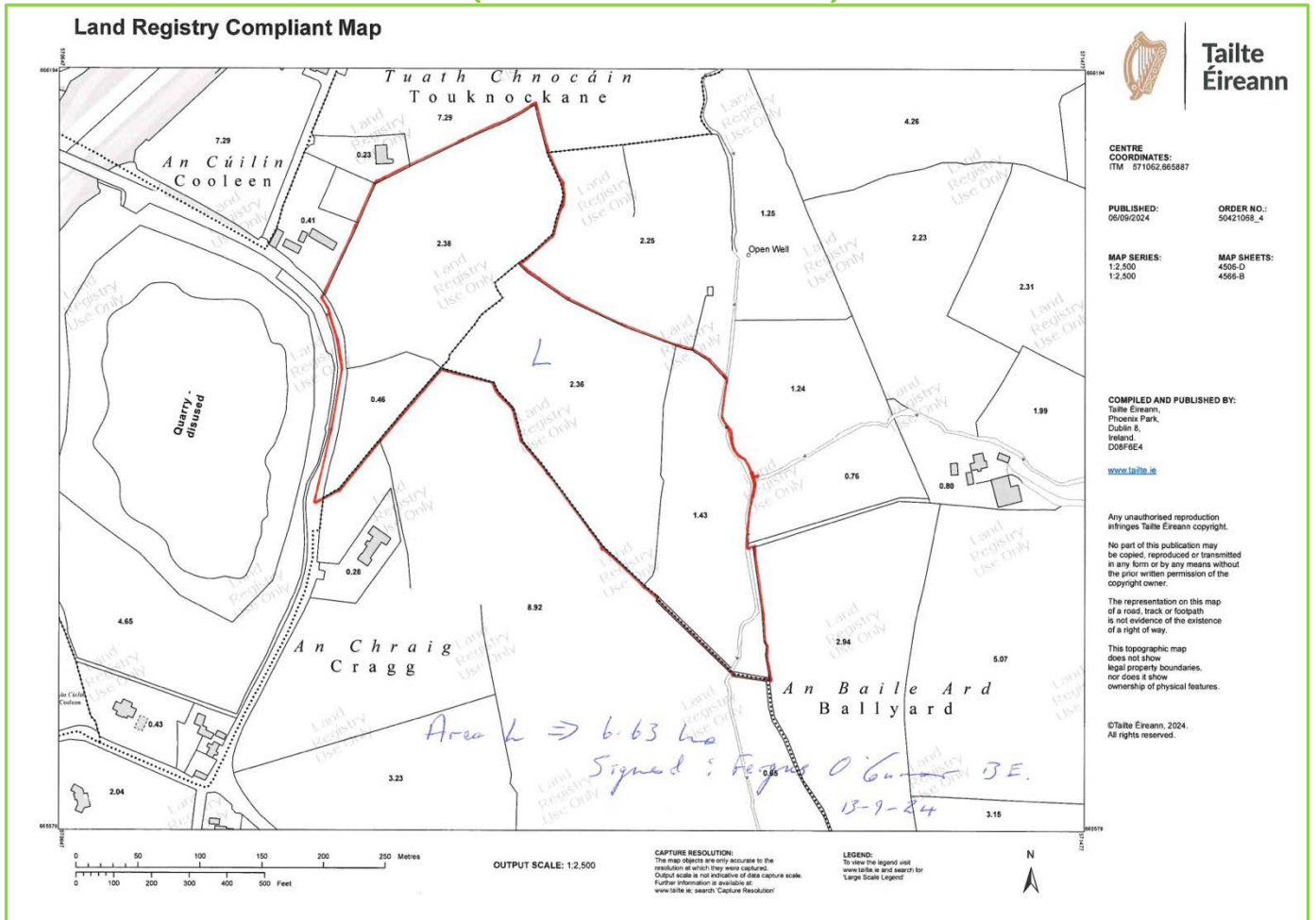
# LOT J: c. 0.30 ha. (c. 0.74 acres)



# LOT K: c. 0.41 ha. (c. 1.01 acres)



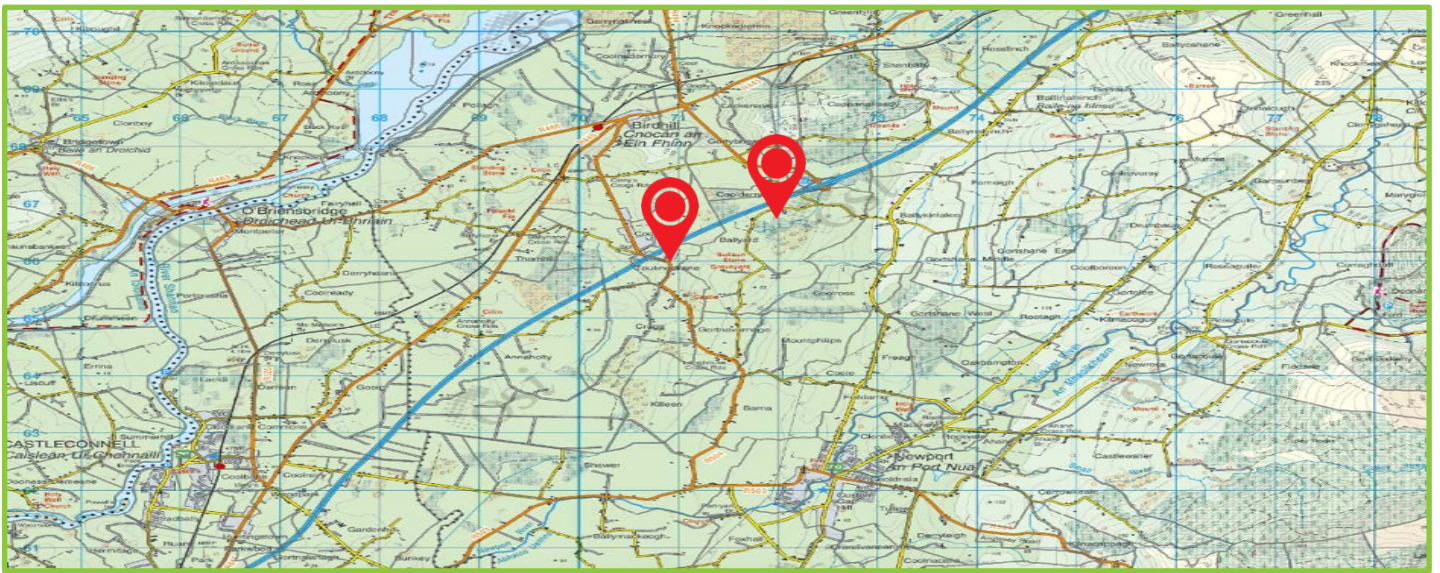
# LOT L: c. 6.63 ha. (c. 16.38 acres)



Aerial Photos:







## | The Lands

REA John Lee are delighted to Announce the Sale of this Extensive Farm Holding extending to c. 143.22 acres in various lots. (on the instructions of the Reps. Edward Ryan, Decd.) Public Auction on Wed. 25th September @ 3pm in our offices Main Street, Newport & Online via LSL Auctions. The lands contain some excellent quality, productive agricultural lands, two dwelling houses in need of upgrading, range of farm buildings and a semi mature forestry plantation. For Full Particulars and Brochure please contact the agent.

## | LEGAL

David O'Brien, McMahon O'Brien Tynan, Mill House, Henry Street, Limerick. Tel: 061 315 100

## | Viewing

By prior appointment.

## | Directions

V94 N5X9 will take you to the main block of land. Cragg lands situated at 52.7444, -8.4316.

## | Price: P.O.A.

Public Auction Wed. 25<sup>th</sup> September, @ 3pm in our offices Main Street, Newport.

**Prospective bidders must pre-register prior to the auction. Online bidders via [www.islauctions.com](http://www.islauctions.com) must register with REA John Lee at least 3 days prior to the auction.**

**For Full Details contact James Lee on 086 2351221 or 061 378121.**



## | Selling agents

REA John Lee  
Main Street,  
Newport,  
Co. Tipperary.  
V94 FC8Y

T 061 378121  
E [info@reajohnlee.ie](mailto:info@reajohnlee.ie)  
W [www.reajohnlee.ie](http://www.reajohnlee.ie)

## | Sales agent

James Lee  
BSc. Hon's., MRICS MSCSI  
Director

T (086) 235 1221  
E [james@reajohnlee.ie](mailto:james@reajohnlee.ie)

**CONDITIONS TO BE NOTED:** The terms set out herein are by way of partial summary. Intending purchasers should obtain a copy of the Conditions of Sale where the matters are dealt with comprehensively. Particulars and Conditions of sale are available from the Agents and the Solicitors with carriage of sale. REA John Lee for themselves and for the vendors whose agents they are, give notice that: 1) The particulars are set out in this Brochure and Schedule as a general outline for the guidance of intending purchasers and do not constitute part of an offer or contract. 2) All descriptions, dimensions, references to condition and necessary permissions for the use and occupation and other details are given in good faith and are believed to be correct but any intending purchasers should not rely on them as statements or representations of fact but must satisfy themselves by inspection or otherwise as to the correctness of each of them. 3) No person in the employment of REA John Lee has any authority to make representations or warranty whatsoever in relation to this property. All prices quoted are exclusive of VAT