



SOUTHGATE · A MIX OF RETAIL, LEISURE, CAFES, AND RESTAURANT



# SOUTHGATE

SHOPPING

A NEW **SHOPPING** EXPERIENCE IN SOUTHGATE · DUBLIN ROAD · DROGHEDA



WITH **DUNNES** AS THE ANCHOR TENANT




**SOUTHGATE**  
SHOPPING

THE DEVELOPMENT

SouthGate offers an excellent alternative to shoppers to shop in comfort, in this open streetscape development, with shops, cafes and restaurants fronting onto the boulevard that runs through the centre of the development.

SouthGate will create a new vibrant quarter for Drogheda, with high quality architectural finishes, calming landscaping and quality amenities for which the developers Shannon Homes (Drogheda) are known.

NEWSAGENTS SHOE SHOPS OPTICIANS SPORTS FASHION PHARMACY BUTCHER OFF LICENSE BEAUTY SALON DRY CLEANERS PUBLIC HOUSE BEAUTY SALON  
SPORTS HOME STORE OPTICIANS SPORTS SHOPS NEWSAGENTS FASHION PHARMACY BUTCHER OFF LICENSE BEAUTY SALON DRY CLEANERS HEALTH SHOP  
HAIR SALON SHOE SHOPS OPTICIANS SPORTS SHOPS NEWSAGENTS FOOD STORE PHARMACY BUTCHER OFF LICENSE BEAUTY SALON DRY CLEANERS PUBLIC  
HOUSE HAIR SALON DIGITAL DELICATESSEN OPTICIANS SPORTS SHOPS NEWSAGENTS DIGITAL CAMERAS PHARMACY BUTCHER HOME STORE BEAUTY SALON  
DRY CLEANERS PUBLIC HOUSE SPORTS SALON SHOE SHOPS OPTICIANS SPORTS SHOPS NEWSAGENTS FASHION PHARMACY BUTCHERS OFF LICENSE BEAUTY  
SALON DRY CLEANERS PUBLIC HOUSE OPTICIANS SALON HEALTH STORE OPTICIANS SPORTS SHOPS NEWSAGENTS FASHION PHARMACY BUTCHERS OFF  
LICENSE BEAUTY SALON DRY CLEANERS PUBLIC HOUSE SPORTS



PS C  
OP  
ANS  
OP  
HO  
H S

SPORTS SHOPS NEWSAGENTS FASHION PHARMACY BUTCHER OFF LICENSE BEAUTY SALON DRY CLEANERS PUBLIC HOUSE BEAUTY SALON SHOE SHOPS  
SPORTS SHOPS NEWSAGENTS FASHION PHARMACY BUTCHER OFF LICENSE BEAUTY SALON DRY CLEANERS HEALTH SHOP HAIR SALON SHOE HOME STORE  
SPORTS SHOPS NEWSAGENTS FOOD STORE PHARMACY BUTCHER OFF LICENSE BEAUTY SALON DRY CLEANERS PUBLIC HOUSE HAIR SALON DIGITAL SHOPS OPTICA  
SPORTS SHOPS NEWSAGENTS DIGITAL CAMERAS PHARMACY BUTCHER HOME STORE BEAUTY SALON DRY CLEANERS PUBLIC HOUSE SPORTS DELICATESSEN  
OPTICIANS SPORTS SHOPS NEWSAGENTS FASHION PHARMACY BUTCHERS OFF LICENSE BEAUTY SALON DRY CLEANERS PUBLIC HOUSE OPTICIANS SALON SHOE SH  
OPTICIANS SPORTS SHOPS NEWSAGENTS FASHION PHARMACY BUTCHERS OFF LICENSE BEAUTY SALON DRY CLEANERS PUBLIC HOUSE SPORTS SALON HEALTH



PROPOSED NEW  
LINK ROAD TO M1

TO DROGHEDA

N1 DUBLIN ROAD

SOUTHGATE

C



OPTICIANS SPORTS SHOPS NEWSAGENTS FASHION PHARMACY BUTCHER OFF LICENSE BEAUTY SALON DRY CLEANERS PUBLIC HOUSE BEAUTY SALON  
OPTICIANS SPORTS SHOPS NEWSAGENTS FASHION PHARMACY BUTCHER OFF LICENSE BEAUTY SALON DRY CLEANERS HEALTH SHOP HAIR SALON SHOE  
NS SPORTS SHOPS NEWSAGENTS FOOD STORE PHARMACY BUTCHER OFF LICENSE BEAUTY SALON DRY CLEANERS PUBLIC HOUSE HAIR SALON DIGITAL  
OPTICIANS SPORTS SHOPS NEWSAGENTS DIGITAL CAMERAS PHARMACY BUTCHER HOME STORE BEAUTY SALON DRY CLEANERS PUBLIC HOUSE SPORTS  
HOPS OPTICIANS SPORTS SHOPS NEWSAGENTS FASHION PHARMACY BUTCHERS OFF LICENSE BEAUTY SALON DRY CLEANERS PUBLIC HOUSE OPTICIANS  
STORE OPTICIANS SPORTS SHOPS NEWSAGENTS FASHION PHARMACY BUTCHERS OFF LICENSE BEAUTY SALON DRY CLEANERS PUBLIC HOUSE SPORTS



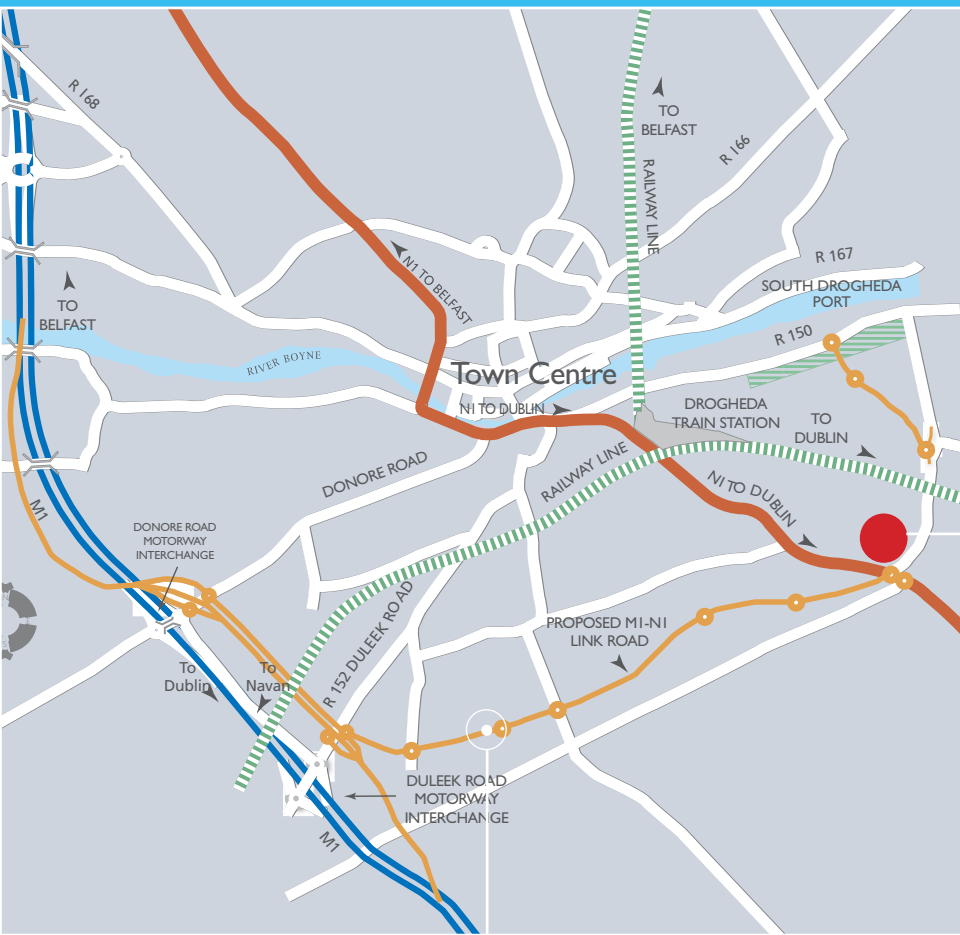
## L.A.P PROPOSALS

South Gate is situated in a pivotal location with the 2008 / 2014 Drogheda Environs plan shortly to be adopted, providing for:

- 3,000 New homes to the East of South Gate
- 5,100 New homes to the West of South Gate
- Development opportunities for employment related uses on lands to the east
- M1 / N1 Link Road
- New grounds for Boyne Rugby Club located on Mill Road
- Proposed new grounds for Drogheda United at Bryanstown



GRANGE RATH



# SOUTHGATE SHOPPING

Located on the Southern edge of Drogheda with high profile frontage to the N1 Dublin to Drogheda Road, SouthGate Shopping Centre is a new retail and leisure destination for the densely populated hinterland.

SouthGates mix of retail, leisure, cafes, and restaurant will make it a destination for the Louth, Meath and North Dublin region. A 3512 m2 Dunnes Stores food, textile and home-ware store will anchor the shopping centre with an additional 24 retail units available from 37m<sup>2</sup> – 349m<sup>2</sup> available.

## PROPOSED N1/M1 LINK

the location

The development is bordered by the N1 and Colpe Road which allows ease of access directly into the scheme from the surrounding region. There are also proposed plans to have a direct link to the M1 via M1-N1 Link Road. The scheme is also adjacent to the high quality Grange Rath residential development with over 1000 homes.







## SOUTHGATE SHOPPING

The principal retail units are situated at the Dunnes Stores Level, with 5 neighbourhood service units located on the lower level adjacent to the underground car park, fronting onto Grange Rath. These units also benefit from set down parking to the front.

The main shopping level is conveniently accessed from the underground car park via travelators and lifts or via a pedestrian entrance from the surface car park. The majority of units at ground level front onto a central boulevard. Linking the development, a water feature runs through the boulevard, cascading into a waterfall to the lower level.





THE DEVELOPMENT ON COMPLETION WILL INCLUDE:

- 3512 M<sup>2</sup> DUNNES FOOD, DRAPERY & HOMEWARE STORE
- 24 RETAIL UNITS FROM 37M<sup>2</sup> – 349 M<sup>2</sup>
- 5652 M<sup>2</sup> OF MODERN OFFICE SPACE
- 62 STYLISH APARTMENTS
- 700 CAR SPACES
- MEDICAL CENTRE
- SIX 2-STOREY OWN DOOR OFFICE UNITS
- GYM
- RESTAURANT & BAR



The future of shopping in Drogheda...

DEMOGRAPHIC INFORMATION

- 149,540 population within immediate catchment area (1)
- 37% of population in high spending 15-44 year age group
- 36% of population in 0-24 year age band
- 81% of households have cars
- €2.1 Billion spend within immediate catchment area
- 56% of population in full time employment

(1) Immediate Catchment area – Total within 25 min drive-time  
 (2) Source Demographics Ireland

DRIVE TIME POPULATIONS

Drive Time	Population	
	2002	2006
15 Minutes	61,594	78,229
25 Minutes	120,184	149,540
30 Minutes	276,784	323,965



CONSUMER SPENDING DROGHEDA\*

	Area	Area	Ireland
Food	€ 374,583,795	18.09%	18.97%
Drink & Tobacco	€ 229,746,003	11.10%	11.47%
Clothing & Footwear	€ 69,905,616	3.38%	3.51%
Housing	€ 264,028,368	12.75%	12.14%
Durable Household Goods	€ 65,570,941	3.17%	3.06%
Non-Durable Household Goods	€ 41,514,400	2.01%	2.04%
Fuel & Light	€ 100,427,015	4.85%	4.90%
Services & Other	€ 564,401,732	27.26%	26.52%
Transport	€ 301,161,434	14.55%	14.50%
Miscellaneous	€ 58,931,551	2.85%	2.90%

Total Expenditure €2,070,270,853






\*Source Demographics Ireland



SOUTHGATE SHOPPING



## demographics - age profile

Drive Time		15 Minutes	25 Minutes	Irish Average
	<15 Years	23.21%	23.09%	20.39%
	15-24	13.13%	13.40%	14.92%
	25-44	37.44%	36.87%	31.74%
	45-64	18.54%	19.02%	21.91%
	65+	7.695	7.62%	11.04%

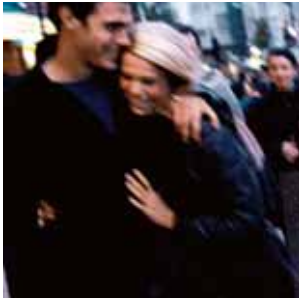


## TERMS

The units are available to let on 25-Year full repairing leases with 5-Yearly upward only rent reviews. The tenant will be responsible for a contribution to the service charge, building insurance and payments of local authority rates.

## SPECIFICATION

Each of the units will be finished to a shell specification, with shop-front and services provided to a point to receive each users specific fit out.



By **Shannon Homes**  
[Drogheda Ltd]  
[www.shannonhomes.ie](http://www.shannonhomes.ie)

10/11 Molesworth Street Dublin 2

Contact:

James Hardy – [james.hardy@eu.jll.com](mailto:james.hardy@eu.jll.com)

Stephen Murray – [stephen.murray@eu.jll.com](mailto:stephen.murray@eu.jll.com)

The particulars and information contained in this brochure are issued by Jones Lang LaSalle on the understanding that all the negotiations are conducted through them. Whilst every care has been taken in the preparation of the particulars and information they do not constitute an invitation to treat, an offer or a contract of any nature whether express or implied. All descriptions, dimensions, maps, plans, artists' impressions, references to condition, permissions or licences of use or occupation, access and other details are for guidance only and may be subject to change, without prior notification. The particulars and information are given in good faith but no intending purchaser/tenant should rely on them as statements or representations of fact and is specifically advised to undertake its own due diligence (at its own expense) to satisfy itself as to the accuracy and/or correctness of the particulars and information given. None of Jones Lang LaSalle, its employees, agents or affiliate companies, makes any warranty or representations whether express or implied with respect to the particulars and/or information and which are to the fullest extent permitted by law, disclaimed; furthermore, such parties accept no liability in respect of any loss suffered by any intending purchaser/tenant or any third party arising out of the particulars or information. Prices are quoted exclusive of applicable taxes such as VAT (unless otherwise stated) and all negotiations are conducted on the basis that the purchaser/lessee shall be liable for any applicable taxes or VAT arising out of the transaction.