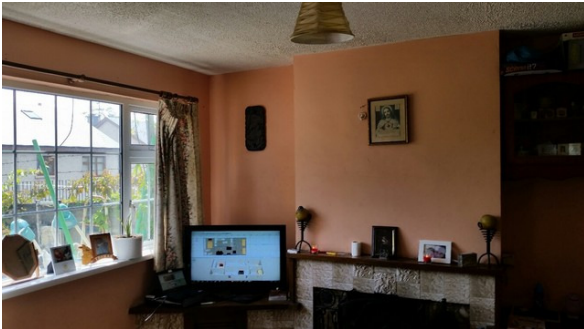
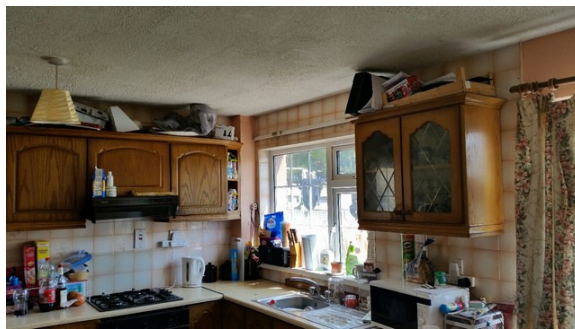


WOULFE & CO. AUCTIONEERS.

ACCOMODATION;

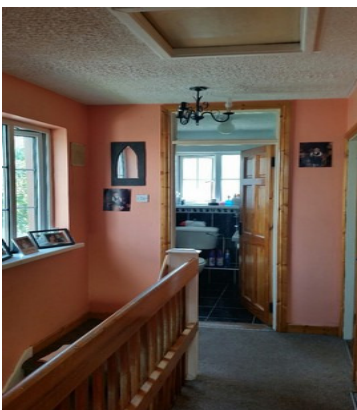
Entrance Hallway: **9'11 x 5'10.** Tiled flooring, light fittings.



Kitchen/Lounge Room: **17'10 x 11'09.** Tiled flooring, Built-in kitchen units, fireplace with back boiler, light fittings.



Dining Room: **15'03 x 11'03.** Carpet flooring, built in units, light fittings and curtains.



Landing: **10'04 x 5'09.** Carpet flooring and light fittings.

Please note that all measurements and details are believed to be correct but any intending purchaser should satisfy himself/herself or otherwise as to the correctness of these particulars



Bedroom one: **9'10 x 10'01.** Carpet flooring, fitted wardrobes, light fittings and blinds.

Bedroom two: **8'09 x 7'03.** Timber flooring, light fittings and curtains.

Bedroom three: **15'08 x 9'11.** Timber flooring, fitted wardrobes.

Bathroom: **7'01 x 5'04.** Modern tiled floor and walls, wc, whb, bath, electric shower, light fittings.

FEATURES:

- Central location
- Mature residential Estate
- Solid fuel heating with the benefit of a back boiler
- Front lawn & front wall
- Concrete yard at rear
- Fuel shed
- Upvc windows
- Mains services

VIEWING

Please ring us to make an appointment. We are open 9.30am to 5.30pm Monday to Friday.

MORTGAGE INFORMATION

We can offer independent mortgage advice dealing with several financial institutions offering the most competitive mortgages in the marketplace to suit your needs. Telephone Declan on 068 32141/087 7617573 for a free and confidential telephone consultation to suit your mortgage requirements.