

For Sale

Asking Price: €595,000

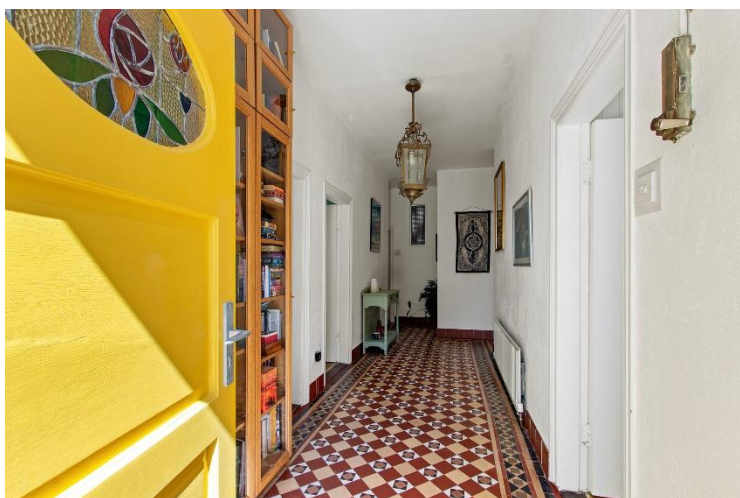
**Sherry
FitzGerald**
O'Neill



Cappaghavukee, Waterfall,
Castletownbere, Co. Cork, P75 TX60.

BER D1

sherryfitz.ie



Attractive bungalow residence set amidst approximately 5.3 acres of beautifully landscaped, mature gardens. This character-filled home with sea views offers a rare opportunity to enjoy peace, privacy and panoramic scenery just 3 miles from the thriving West Cork fishing town of Castletownbere.

The property is located in the Waterfall area on the scenic Glengarriff Road from Castletownbere and is convenient to the local golf course. The property is located just off one of Ireland's most stunning coastal routes. This home combines timeless charm with modern comforts in a spectacular natural setting, tucked away from the road and taking in the magnificent coastline views.

The residence is carefully crafted and spans 138 sq. m / 1,485 sq. ft. approximately of bright and well-designed living space.

The accommodation includes an inviting entrance hall, spacious sitting room with a solid fuel stove, a light-filled kitchen/dining room, utility room, four generous bedrooms, and a family bathroom. There is also a spacious attic with Velux windows, offering excellent potential for conversion. The property features include oil-fired central heating, PVC double-glazed windows, gravel driveway and high ceilings throughout.

The extensive 5.3 acres approximately of grounds are laid out in rolling lawns interspersed with mature trees and shrubs, creating privacy and pleasant views. In addition, the property benefits from a 1/5 share of approximately 6.3 acres of commonage.

There are two outbuildings, ideal for storage or workshop use.

Cappagh House is perfectly positioned on the Beara Peninsula, the area is renowned for its walking trails, historic sites and the acclaimed Dzogchen Beara Retreat Centre. Castletownbere, a hub for one of Europe's premier fishing fleets, offers a vibrant maritime lifestyle with excellent opportunities for sailing, fishing, and exploring West Cork's coastal beauty.





GROSS INTERNAL AREA

TOTAL : 138.31 m²

Whilst every attempt has been made to ensure the accuracy of the floor plan contained here, measurements of doors, windows, rooms and any other items are approximate and no responsibility is taken for any error, omission, or misstatement. This plan is for illustrative purposes only and should be used as such by any prospective purchaser.



NEGOTIATOR

Olivia Hanafin
Sherry FitzGerald O'Neill
Wolfe Tone Square
Bantry
Co Cork
T: 027 31030
E: info@sfoneill.ie

VIEWINGS

Strictly By Appointment Only

ENERGY RATING

BER: D1
Cert No.: 108032954
EPI: 256.49 kWh/m²/yr

sherryfitz.ie
sfoneill.ie
myhome.ie
daft.ie
propgoluxury.com

CONDITIONS TO BE NOTED: A full copy of our general brochure conditions can be viewed on our website at <http://www.sherryfitz.ie/terms>, or can be requested from your local Sherry FitzGerald office. We strongly recommend that you familiarise yourself with these general conditions. While care has been taken to ensure that information contained in Sherry FitzGerald publications is correct at the time of publication, changes in circumstances after the time of publication may impact on the accuracy of this. PSRA Registration No. 004158