

## WOULFE & CO. AUCTIONEERS.

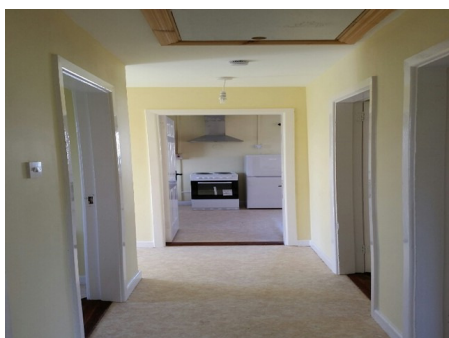
### ACCOMODATION

#### Entrance Hall:

9'04 x 3'04. Lino flooring, light fittings.



**Kitchen/Dining/Lounge:** 21'05 x 9'11. Lino flooring, electric cooker, extractor, fitted units, sink, light fittings.



#### Bedroom One:

11'07 x 7'0. Carpet, light fittings.

#### Bedroom Two:

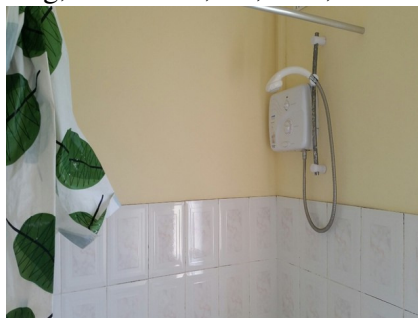
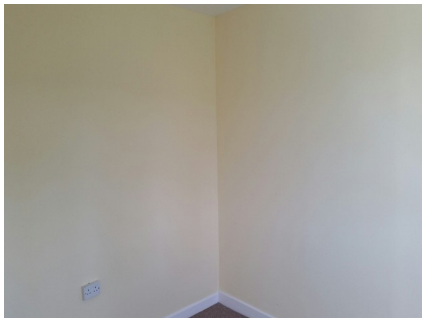
14'01 x 10'0. Carpet, light fittings.

#### Bedroom Three:

10'11 x 10'04. Carpet, light fittings.

#### Main Bathroom:

6'10 x 5'08. Lino flooring, tiled walls, wc, whb, electric shower, bath.



Please note that all measurements and details are believed to be correct but any intending purchaser should satisfy himself/herself or otherwise as to the correctness of these particulars.

## ***FEATURES***

- Built in 1975
- Folding attic stairs
- Front & Rear Lawn
- Large Spacious Site
- front and rear boundary wall
- Newly painted & carpeted
- Garage/storage shed
- Wooden entrance gates
- UPVC Windows and doors



**GPS Co-ordinates: 522185N 0936W**

## ***VIEWING***

Please ring us to make an appointment. We are open 9.30am to 5.30pm Monday to Friday.

## ***MORTGAGE INFORMATION***

We can offer independent mortgage advice dealing with several financial institutions offering the most competitive mortgages in the marketplace to suit your needs. Telephone Declan on 068 32141/087 7617573 for a free and confidential telephone consultation to suit your mortgage requirements.

Please note that all measurements and details are believed to be correct but any intending purchaser should satisfy himself/herself or otherwise as to the correctness of these particulars.