

For Sale

Asking Price: €285,000

Sherry
FitzGerald
O'Neill



The Village, Glengarriff,
Co. Cork, P75 EH59.

BER D1

sherryfitz.ie



Convenient village centre street house, enjoying an excellent location on the main thoroughfare of Glengarriff in West Cork.

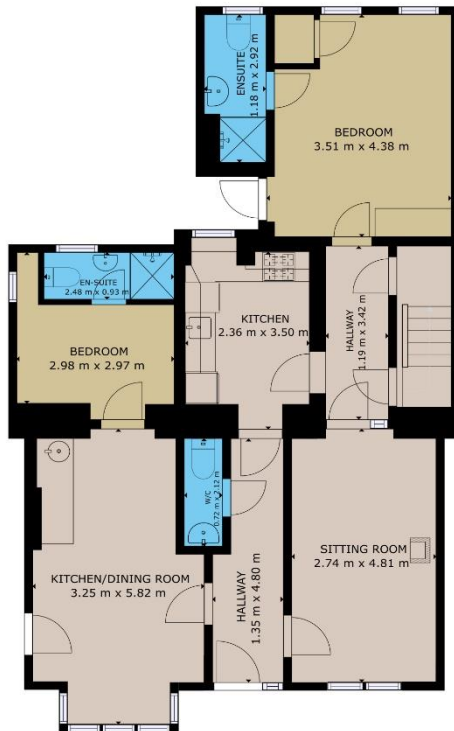
The building benefits from a useable floor area of 1884 sq. ft. /175 sq. m. approx. and its many features include, pvc double glazed windows, oil fired central heating and stove in fireplace.

The ground floor accommodation includes a reception hall and 2 self-contained 1-bedroom accommodation units. The units comprise of kitchen, sitting area, bedroom and shower room facilities. Upstairs requires further renovation and comprises of a large spacious room to the front with high ceilings and exposed stone walls. There are 4 further rooms on the first floor.

To the rear of the property there is a small, covered storage area and steps leading to higher ground.

The property is an excellent village centre opportunity available with vacant possession and is an ideal purchase for the creative buyer to maximise use and potential.





FIRST FLOOR



SECOND FLOOR

GROSS INTERNAL AREA

TOTAL : 175.02m²

Whilst every attempt has been made to ensure the accuracy of the floor plan contained here, measurements of doors, windows, rooms and any other items are approximate and no responsibility is taken for any error, omission, or misstatement. This plan is for illustrative purposes only and should be used as such by any prospective purchaser.



NEGOTIATOR

Olivia Hanafin
Sherry FitzGerald O'Neill
Wolfe Tone Square
Bantry Co Cork
T: 027 31030
E: info@sfoneill.ie

VIEWINGS

Strictly By Appointment Only

ENERGY RATING

BER: D1
Cert No.: 106522501
EPI: 226.68 kWh/m²/yr

sherryfitz.ie
sfoneill.ie
myhome.ie
daft.ie

CONDITIONS TO BE NOTED: A full copy of our general brochure conditions can be viewed on our website at <http://www.sherryfitz.ie/terms>, or can be requested from your local Sherry FitzGerald office. We strongly recommend that you familiarise yourself with these general conditions. While care has been taken to ensure that information contained in Sherry FitzGerald publications is correct at the time of publication, changes in circumstances after the time of publication may impact on the accuracy of this. PSRA Registration No. 004158