

# An impressive A-rated family home overlooking Bunclody Golf Course

The Skylarks, Bunclody Woods, Bunclody, Y21 A8PA



# An impressive A-rated family home overlooking Bunclody Golf Course

The Skylarks, Bunclody Woods, Bunclody, Y21 A8PA



# An impressive A-rated family home overlooking Bunclody Golf Course

The Skylarks, Bunclody Woods, Bunclody, Y21 A8PA



## About this property

The Skylarks is a stunning and contemporary 4-bedroom family home. Completed in 2023, this A-rated home offers a sunny open aspect, taking in beautiful views of the Bunclody Golf course and surrounding open countryside.

Accessed via the main entrance gate for Bunclody Golf and Fishing Club, a winding tree-lined avenue leads towards Bunclody Woods. The Skylarks is approached by a cobble paved driveway where there is ample parking to the front of the house. Upon stepping through the front door, you are greeted by a spacious entrance hallway which opens into a stunning bright living room, perfect for relaxing in the evenings. The spacious kitchen is of contemporary design, with 2 sets of french doors opening out onto the garden. There is also a wc accessed off the entrance hallway.

Continuing up to the first floor, there is the master bedroom suite which offers wonderful views over the 4th and 3rd fairways and far-reaching countryside views beyond. There are three further bedrooms, a family bathroom and additional storage at the attic level.

Additional features include underfloor heating, a heat recovery and

ventilation system and energy-efficient double-glazed windows. In all the accommodation extends to about 166 sq m / 1,786 sq ft, with a full layout shown on the accompanying floorplans.

# An impressive A-rated family home overlooking Bunclody Golf Course

The Skylarks, Bunclody Woods, Bunclody, Y21 A8PA



## Property Details

Viewings: Strictly by private appointment with Savills Residential & Country Agency.

BER: A2

BER Number: 116155045

Eircode

Y21 A8PA

Solicitor

Lombard Cullen & Fitzpatrick Solicitors

10 McDermott Street

Gorey

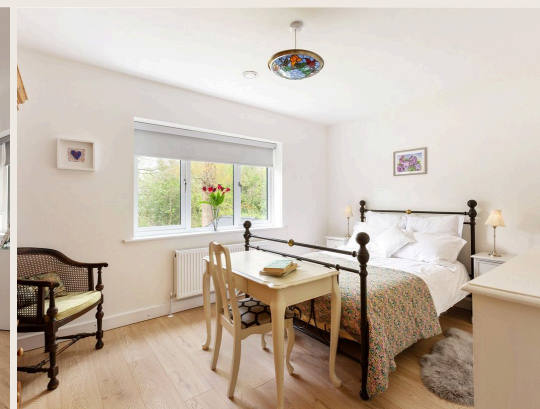
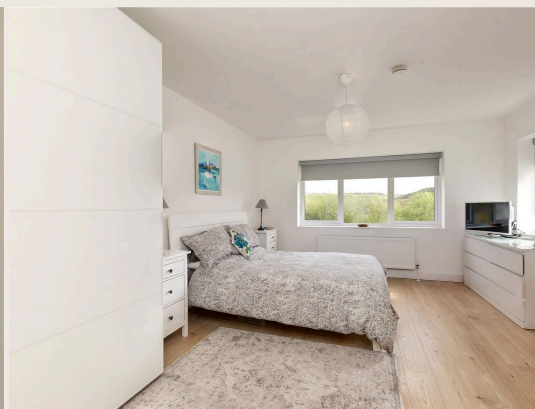
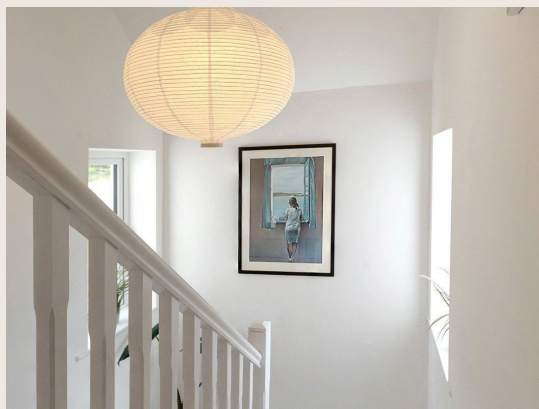
Co. Wexford

Contact: Anna O'Donovan



# An impressive A-rated family home overlooking Bunclody Golf Course

The Skylarks, Bunclody Woods, Bunclody, Y21 A8PA



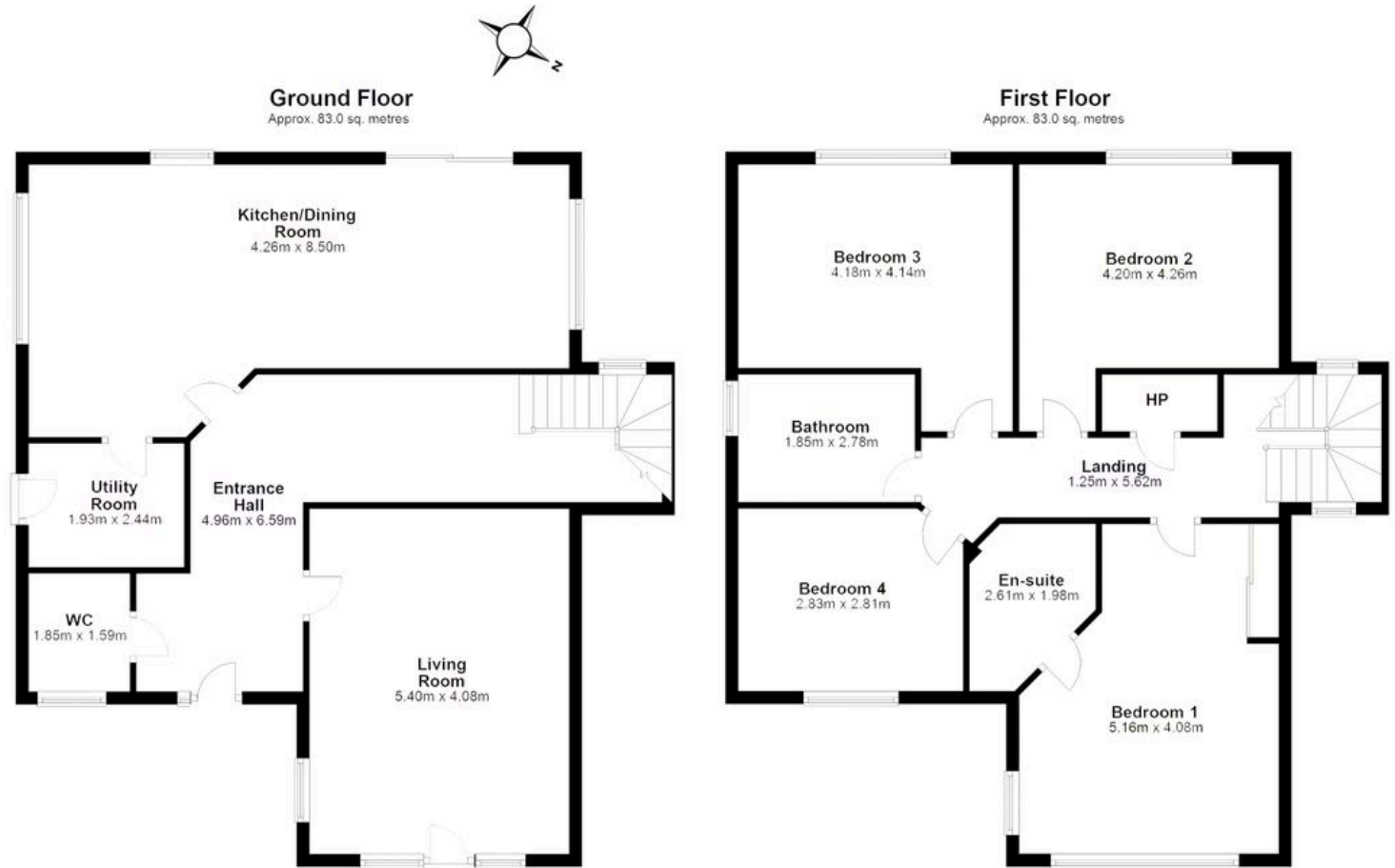
# An impressive A-rated family home overlooking Bunclody Golf Course

The Skylarks, Bunclody Woods, Bunclody, Y21 A8PA



## Plans

 1,787 sq ft



The Skylarks, 3 Oak Grove  
Bunclody Woods  
Bunclody

# An impressive A-rated family home overlooking Bunclody Golf Course

The Skylarks, Bunclody Woods, Bunclody, Y21 A8PA



## Local Area

County Wexford is renowned for its excellent verdant countryside, favourable climate, picturesque mountain ranges, white sandy beaches, and charming character villages. The Skylarks is part of a small exclusive development, situated between Bunclody Woods and the fairways of Bunclody Golf and Fishing Club. The amenities of nearby Bunclody town are within convenient walking distance. Bunclody is a charming Georgian town nestled in the valley of the Blackstairs Mountain, along the banks of the River Slaney.







# An impressive A-rated family home overlooking Bunclody Golf Course

The Skylarks, Bunclody Woods, Bunclody, Y21 A8PA



## Enquire



**Liam McCarthy**

Dublin - Residential & Country Agency

+353 83 878 4989

liam.mccarthy@savills.ie

## More Information



[View on website](#)



[View Digital Brochure](#)



[Property Search](#)

**Viewing strictly by appointment**

Property Ref: DUY230208



Important Notice: Savills, its clients and any joint agents give notice that 1: They are not authorised to make or give any representations or warranties in relation to the property either here or elsewhere, either on their own behalf or on behalf of their client or otherwise. They assume no responsibility for any statement that may be made in these particulars. These particulars do not form part of any offer or contract and must not be relied upon as statements or representations of fact. 2: Any areas, measurements or distances are approximate. The text, photographs and plans are for guidance only and are not necessarily comprehensive. It should not be assumed that the property has all necessary planning, building regulation or other consents and Savills have not tested any services, equipment or facilities. Purchasers must satisfy themselves by inspection or otherwise. *powered by* **FluxPro**