

For Sale

Asking Price: €520,000



Summerhill, Enniscorthy, Co.
Wexford

sherryfitz.ie

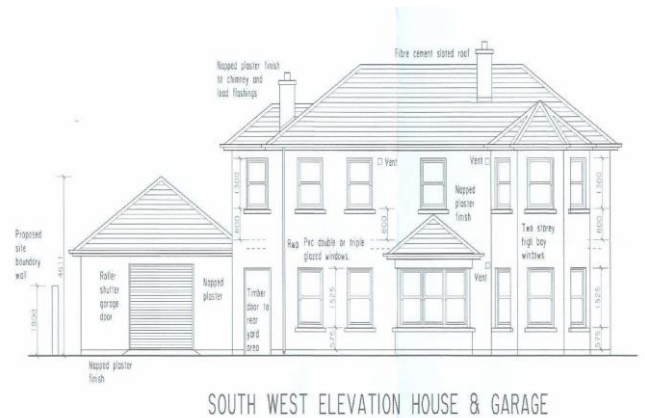


Brand new A rated home for sale in the very sought after area of Summerhill.

The property will be finished to a very high standard with fitted kitchen and tiled floors. It also will have the benefit of a large bio-fold door into the kitchen to allow as much light as possible in a large kitchen/dining room. Upstairs, the master bedroom is en-suite with the benefit of a walk in wardrobe.

The property is an ideal location being only a few minutes' walk to Pettits and all the amenities of Enniscorthy town.

Call or email us today for a set of plans, property is currently under construction.



Special Features & Services

- Excellent location.
- High standard of finish.
- House size: 199 sq. mts approx.
- Fully fitted kitchen
- Tiled floors
- Painted white internally
- Sanitary ware fitted.
- Air to water heating system.

Accommodation

Entrance Hall

Kitchen/Dining Room 10.00m x 3.40m (32'10" x 11'2"):

Utility Room

WC

Sitting Room 5.80m x 3.90m (19' x 12'10"):

First Floor

Landing

Master Bedroom 5.00 (16'5")m x 4.55 (14'11")m @ widest point:

En-Suite 1.85m x 2.00m (6'1" x 6'7"):

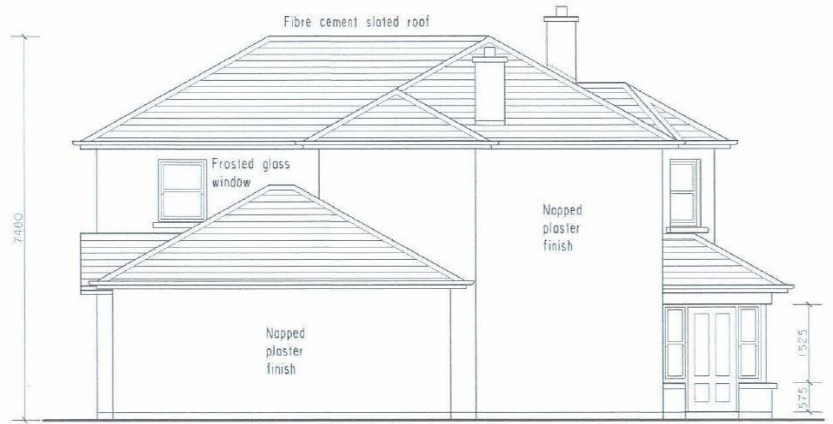
Walk in wardrobe 1.85m x 2.40m (6'1" x 7'10"):

Bedroom 2 3.30m x 3.30m (10'10" x 10'10"):

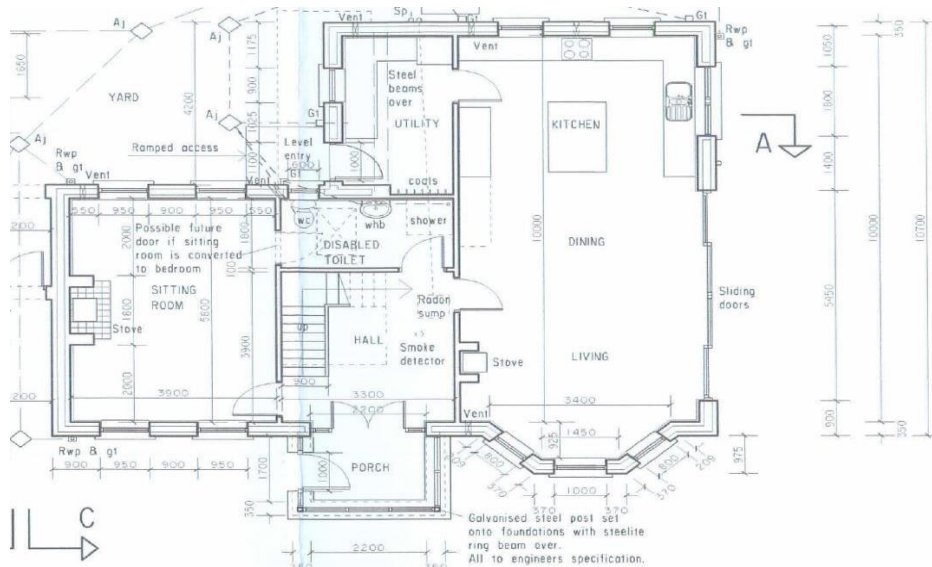
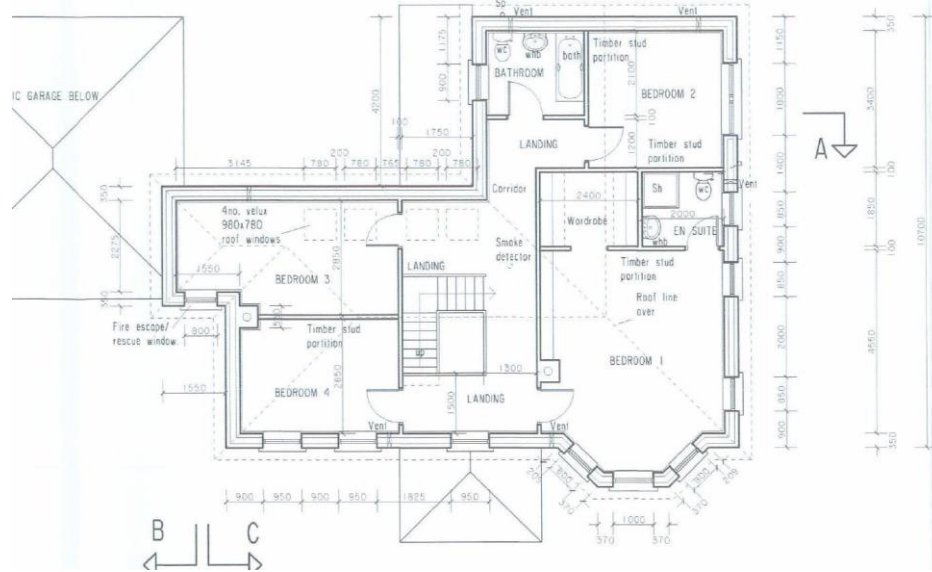
Bedroom 3 2.85m x 3.85m (9'4" x 12'8"):

Bedroom 4 2.85m x 3.70m (9'4" x 12'2"):

Bedroom 2 4.0m x 2.40m (13'1" x 7'10"):



NORTH WEST ELEVATION HOUSE ONLY



Directions

The property is located at the top of Summerhill, Eircode of neighbouring property Y21 X0K1



NEGOTIATOR

Declan O'Leary
Sherry FitzGerald O'Leary
Kinsella
11 Slaney Street, Enniscorthy, Co
Wexford
T: 053 92 37322
E: sfol@wexproperty.ie

sherryfitz.ie

CONDITIONS TO BE NOTED: *A full copy of our general brochure conditions can be viewed on our website at <http://www.sherryfitz.ie/terms>, or can be requested from your local Sherry FitzGerald office. We strongly recommend that you familiarise yourself with these general conditions. While care has been taken to ensure that information contained in Sherry FitzGerald publications is correct at the time of publication, changes in circumstances after the time of publication may impact on the accuracy of this.*

PSRA Registration No. 001510