

Superb turnkey 2 bedroom second floor apartment

22 An Radharc, Maryborough Ridge, Douglas, T12 FY51

savills



Superb turnkey 2 bedroom second floor apartment

22 An Radharc, Maryborough Ridge, Douglas, T12 FY51



Superb turnkey 2 bedroom second floor apartment

22 An Radharc, Maryborough Ridge, Douglas, T12 FY51



About this property

Savills is delighted to introduce 22 An Radharc, situated in the ever-popular Maryborough Ridge development, this property is a turnkey, two-bedroom second floor apartment with the added convenience of lift access. Designed with modern living in mind, this home is ready for immediate occupation, offering style, comfort and functionality in equal measure.

Upon entering, you are welcomed by a superb entrance hall which includes a recessed area ideal as a cloakroom. Moving down the hall, you will pass the main bathroom and the first of two storage rooms on your right, while to your left lie the two spacious double bedrooms. Both bedrooms are fitted with built-in wardrobes, with bedroom one further enhanced by a private en suite, creating a perfect retreat.

At the end of the hallway, the apartment opens into the impressive kitchen, living and dining room. Stretching the full depth of the property, this is a superbly proportioned space that benefits from a dual aspect and a desirable east-to-west orientation, ensuring natural light floods the room throughout the day. From here, access is provided to a generous composite deck balcony (approx. 13.6 sq m / 146 sq ft). The

balcony, also facing east to west, is a standout feature and offers an ideal setting for outdoor dining or relaxation.

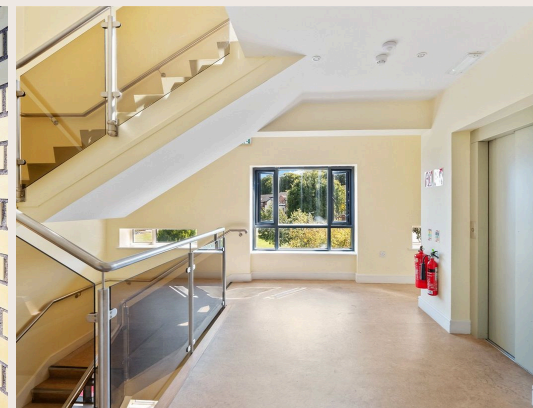
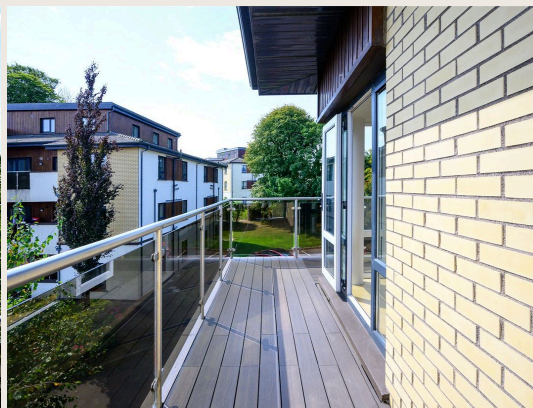
Located in one of Cork City's most sought-after residential addresses, 22 An Radharc enjoys proximity to a wide range of amenities. Shops, supermarkets, schools, sports clubs and local businesses are all within easy reach, offering convenience and a vibrant lifestyle.

This property is certain to appeal to a wide variety of buyers, from first-time purchasers looking to establish their home, to those seeking to trade down, or investors in search of a strong opportunity in a prime location.

Arrange your private viewing with Savills today.

Superb turnkey 2 bedroom second floor apartment

22 An Radharc, Maryborough Ridge, Douglas, T12 FY51



Superb turnkey 2 bedroom second floor apartment

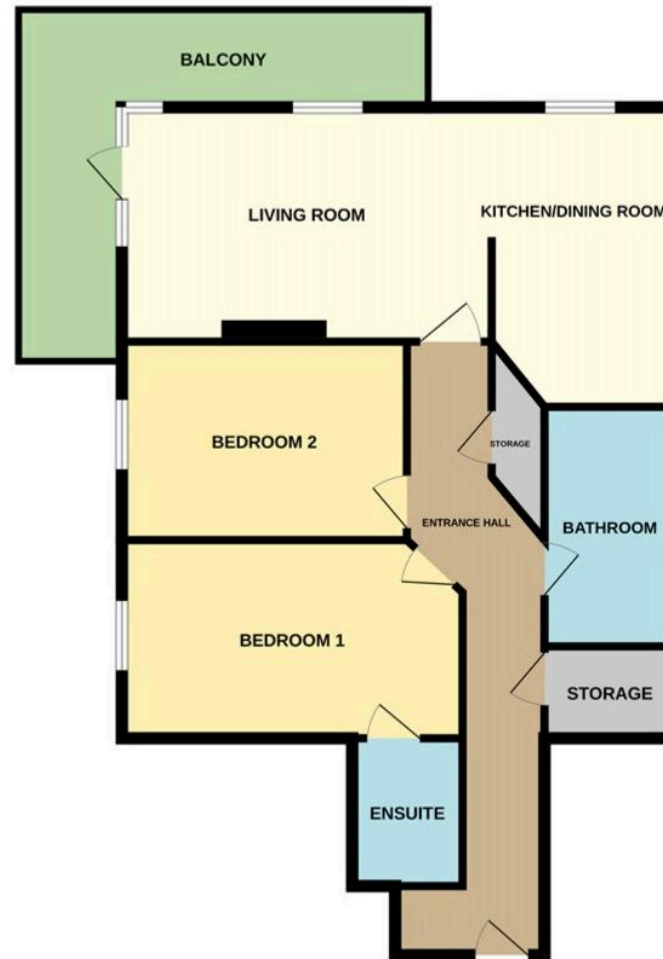
22 An Radharc, Maryborough Ridge, Douglas, T12 FY51



Plans



87 sq m / 936 sq ft



Superb turnkey 2 bedroom second floor apartment

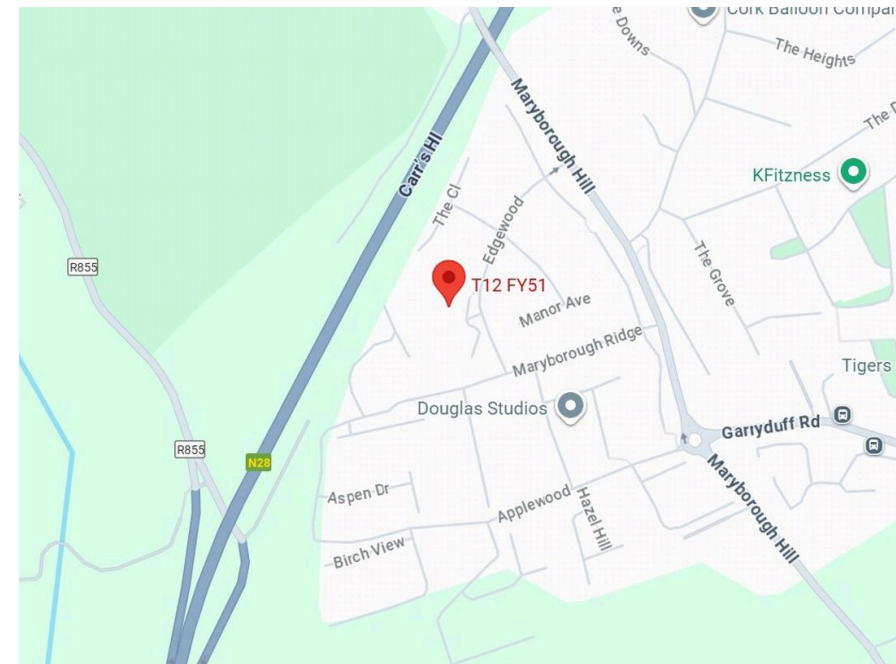
22 An Radharc, Maryborough Ridge, Douglas, T12 FY51

savills



Local Area

Cork City 5.5km
Douglas Village 2km
Douglas Golf Course 1km
Cork International Airport 8km
Blackrock 6km
Rochestown 4km
Carrigaline 8km
*All distances are approximate



Superb turnkey 2 bedroom second floor apartment

22 An Radharc, Maryborough Ridge, Douglas, T12 FY51



Property Details

Key Features

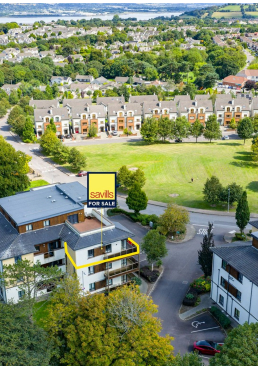
- Superb turnkey 2 bedroom second floor apartment
- Apartment approx. 87 sq m / 937 sq ft
- Balcony approx. 13.6 sq m / 146 sq ft
- Lift access
- Private car parking
- South-west facing balcony
- Overlooking open green space
- Close to essential and social amenities
- Ready for immediate occupation

Services & Additional Information

- Internet
- Parking
- Mains services
- GFCH

BER

BER Rating = N/A



Superb turnkey 2 bedroom second floor apartment

22 An Radharc, Maryborough Ridge, Douglas, T12 FY51



Enquire



Karl O'Reilly
Cork
+353 (0) 83 878 3944
Karl.OReilly@savills.ie

More Information



View on website



View Digital Brochure



Property Search

Viewing strictly by appointment

Property Ref: CKK250685

Cork

Penrose House, Penrose Dock, T23 V38E
+353 (0) 21 427 1371



Important Notice: Savills, its clients and any joint agents give notice that 1: They are not authorised to make or give any representations or warranties in relation to the property either here or elsewhere, either on their own behalf or on behalf of their client or otherwise. They assume no responsibility for any statement that may be made in these particulars. These particulars do not form part of any offer or contract and must not be relied upon as statements or representations of fact. 2: Any areas, measurements or distances are approximate. The text, photographs and plans are for guidance only and are not necessarily comprehensive. It should not be assumed that the property has all necessary planning, building regulation or other consents and Savills have not tested any services, equipment or facilities. Purchasers must satisfy themselves by inspection or otherwise. *powered by* **FluoPro**