

For Sale

Asking Price: €235,000

Sherry
FitzGerald
O'Neill



3 Mountain View, Kealkil,
Co. Cork. P75 R802.

BER C1

sherryfitz.ie



3 Mountain View is a beautifully presented 2 bedroom, semi-detached home, located within Kealkill Village and benefiting from beautiful views overlooking the Ouvane River valley.

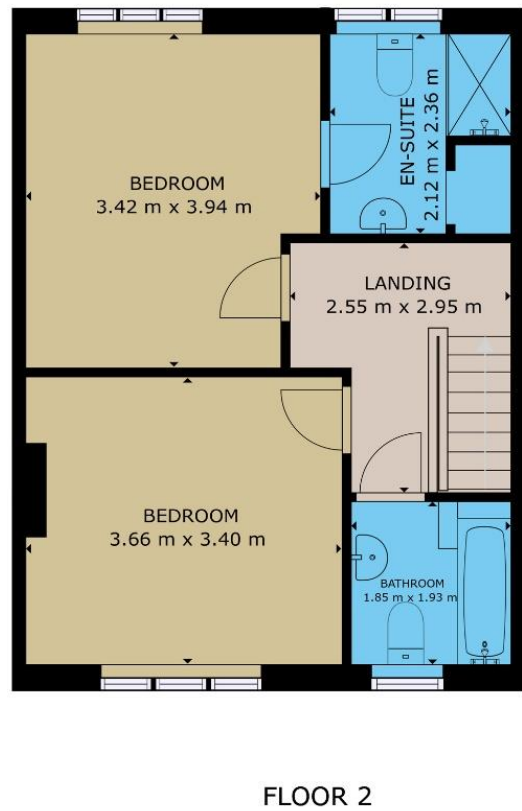
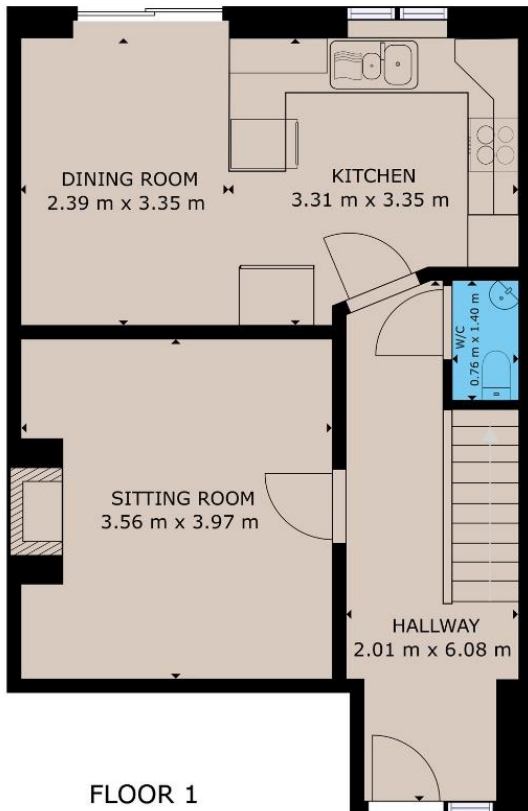
The house is bright, spacious and is finished to an excellent standard. The many features of this fine house include modern kitchen units, double glazed windows, oil fired central heating, wood burning stove and timber flooring throughout.

The accommodation includes entrance hall, sitting room, kitchen / dining room, guest wc, 2 bedrooms, 1 ensuite and a family bathroom.

There is ample car parking to the front of the house and to the rear there is a sunny south facing garden laid out in lawn, patio area and a small timber storage shed. There is a small stream adding to the ambience on the south boundary.

Kealkill is a rural village located between Bantry and Glengarriff. The Mizen Peninsula, Sheep's Head and Beara Peninsulas are easily accessible whilst Cork City is a 1 hour drive approximately.





GROSS INTERNAL AREA

TOTAL : 88.50 m²

Whilst every attempt has been made to ensure the accuracy of the floor plan contained here, measurements of doors, windows, rooms and any other items are approximate and no responsibility is taken for any error, omission, or misstatement. This plan is for illustrative purposes only and should be used as such by any prospective purchaser.



NEGOTIATOR
Olivia Hanafin
Sherry FitzGerald O'Neill
Wolfe Tone Square
Co Cork
T: 027 31030
E: info@sfoneill.ie

VIEWINGS
Strictly By Appointment Only

ENERGY RATING
BER: C1
Cert No.: 116731225
EPI: 156.46 kWh/m²/yr

sherryfitz.ie
sfoneill.ie
myhome.ie
daft.ie

CONDITIONS TO BE NOTED: A full copy of our general brochure conditions can be viewed on our website at <http://www.sherryfitz.ie/terms>, or can be requested from your local Sherry FitzGerald office. We strongly recommend that you familiarise yourself with these general conditions. While care has been taken to ensure that information contained in Sherry FitzGerald publications is correct at the time of publication, changes in circumstances after the time of publication may impact on the accuracy of this. PSRA Registration No. 004158