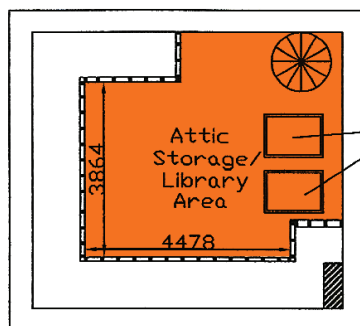


Section



Second Floor Plan

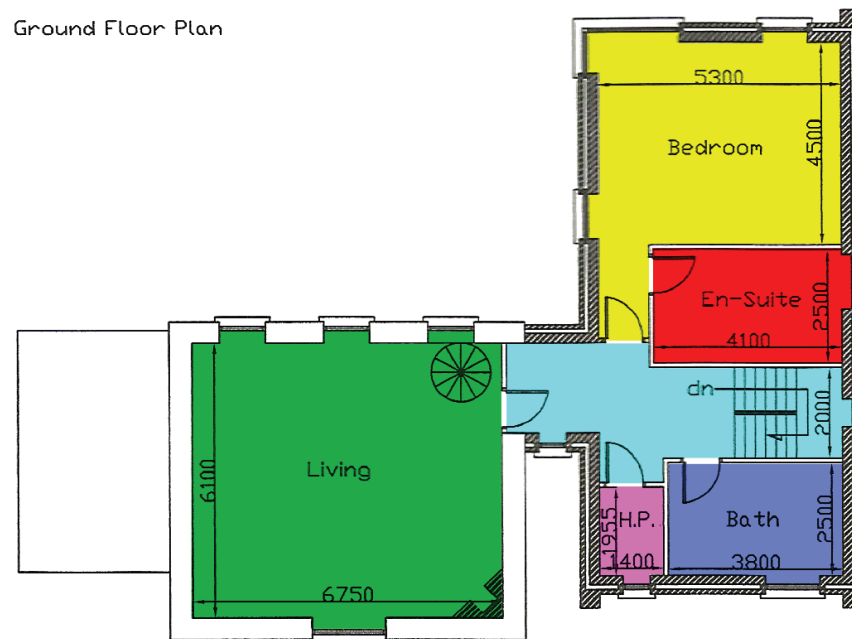
Title:
Extensions, Alterations
and Change of Use of
Store to Dwellinghouse
near Frankfield House,
Curraghconway, Grange,
Douglas for Matt Maher
and Fiona Ryan.
Scale: 1:100
Date: 24th October 2007
Drawing No: 1041/E/2
Revisions: 18th Feb. 2008

Proposed	Area sq m	Existing	Area sq m
Ground Floor	78.2	Ground Floor	41.2
First Floor	65.8	First Floor	41.2
Second Floor	24.6	Second Floor	—
Total 1814.1 sq. ft.	168.6	Total 886.6 sq. ft.	82.4

Total of Existing
and 251 sq. m or
2700.8 sq. ft.



Ground Floor Plan



First Floor Plan