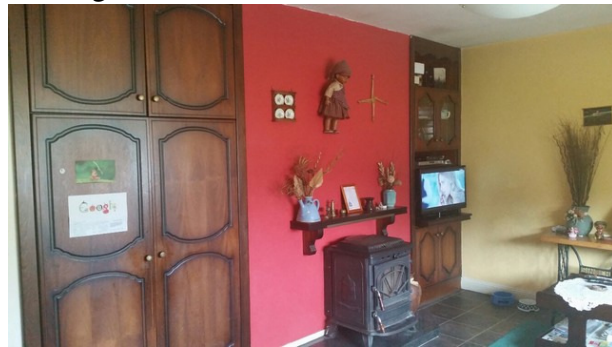


WOULFE & CO. AUCTIONEERS.
ACCOMODATION;

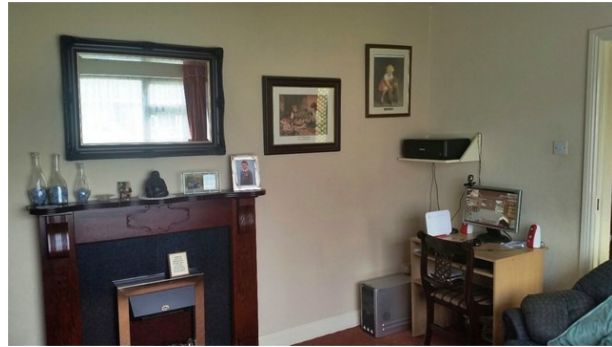
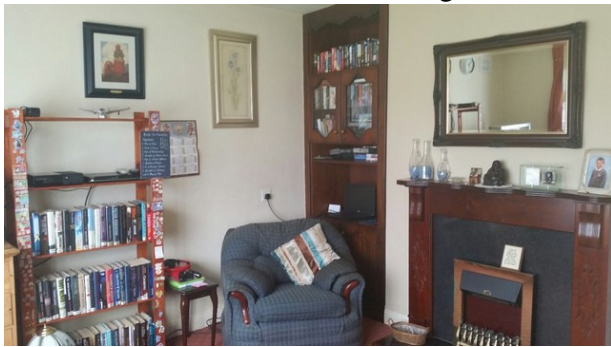
Entrance Hallway: 3.96 x 1.78. Lino flooring.



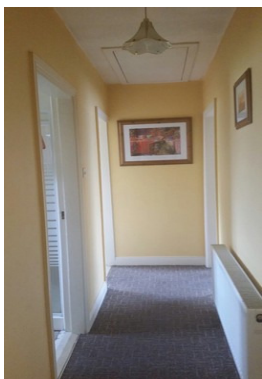
Kitchen: 1.0 x 1.35. Lino flooring, fitted kitchen, fitted oven, hob with extractor, plumbed appliances, blinds, light fittings.



Dining Room: 7.9 x 1.34. Lino flooring, solid fuel stove with back boiler, curtains and blinds, light fittings.



Living Room: 4.17 x 3.57. Carpet, fitted units, marble fireplace surround, curtains, light fittings.



Hallway: 1.05 x 4.57. Carpet, Light fittings.

Please note that all measurements and details are believed to be correct but any intending purchaser should satisfy himself/herself or otherwise as to the correctness of these particulars.

Bedroom One: 3.05 x 3.3. Carpet, fitted wardrobes, curtains, light fittings.



Bedroom Two: 3.28 x 3.58. Carpet, fitted wardrobes, curtains, light fittings.
En-Suite: 2.0 x 1.08. Tiled, wc, whb, vanity unit, towel radiator, electric shower.

Bedroom Three: 3.05 x 3.43. Carpet, free standing wardrobes, curtains, light fittings.



Bathroom: 1.68 x 3.41. Lino flooring, wc, whb, bath, Triton electric shower, vanity unit, blinds.



Garage: 3.8 x 14.86.

Please note that all measurements and details are believed to be correct but any intending purchaser should satisfy himself/herself or otherwise as to the correctness of these particulars.

FEATURES:

- PVC double glazed windows
- PVC fascia & soffits
- Mains Services
- OFCH
- Stove with back boiler
- Stira Stairs
- Entrance gates
- Block wall
- Front and rear lawns
- Rear concrete walls



Directions:

Entering Listowel pas Listowel Auto's after roundabout take the first left then turn left, the property is the 3rd house on the right hand side.

GPS Co-Ordinates:

Latitude : 52.44723 (52° 26' 50.04" N)

Longitude : -9.47347 (9° 28' 24.48" W)

VIEWING:

Please ring us to make an appointment. We are open 9.30am to 5.30pm Monday to Friday.

MORTGAGE INFORMATION

We can offer independent mortgage advice dealing with several financial institutions offering the most competitive mortgages in the marketplace to suit your needs. Telephone Declan on 068 32141/087 7617573 for a free and confidential telephone consultation to suit your mortgage requirements.

Please note that all measurements and details are believed to be correct but any intending purchaser should satisfy himself/herself or otherwise as to the correctness of these particulars.