

For Sale
By Private Treaty

Guide Price

€130,000

REA
JOHN LEE



REA
JOHN LEE

BER > G

BALLYCAHANE

Ballinahinch, Birdhill, Co. Tipperary.

V94 W9W3

2 Bedroom Detached – on c. 1.161 acres



reajohnlee.ie

PSRA: 002764



| Location

This property is situated a short distance from Ballinahinch village and is within easy reach of the University of Limerick, only 25 minutes outside Limerick City with easy access to the M7 motorway. Birdhill 6.5km, Ballina/Killaloe 7.5km, Newport 8.5km.

| Description

REA John Lee bring to the market this Ideally Situated 2 Bedroom Detached Residence occupying a stunning site. The property stands on c. 1.161 acres with majestic views of the surrounding countryside. While requiring renovation and upgrading this presents an excellent opportunity for anyone looking for a lovely countryside location only 25 minutes drive from Limerick City. The M7 motorway is only a short distance with Nenagh, Birdhill, Ballina/Killaloe all within easy reach. Further details from the agent.

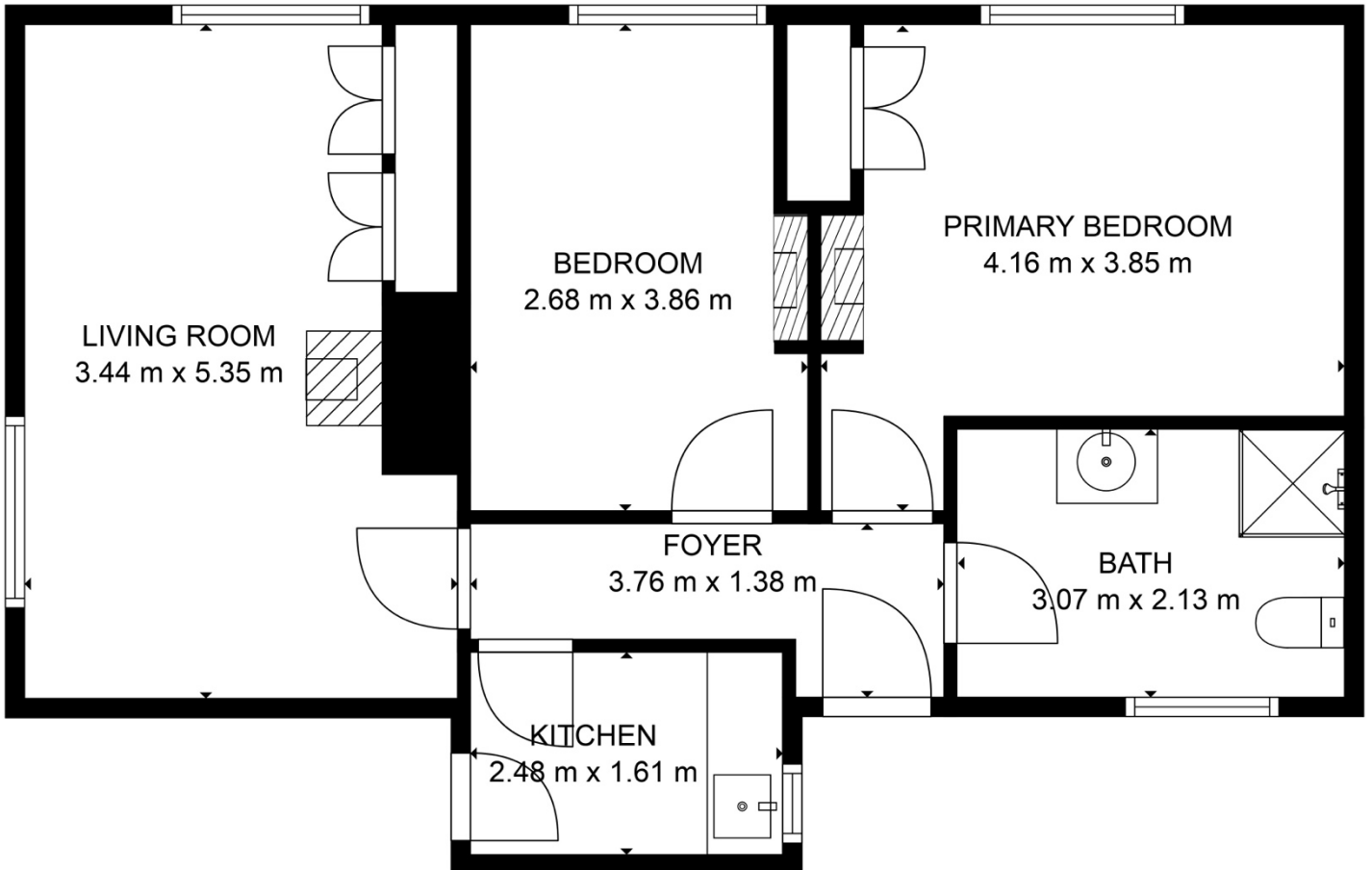
Services include; Mains ESB, Mains Water, Septic tank. All windows are single glazed.

Built c. 1958. Floor Area c. 59 sq.m.

Call 061 378 121

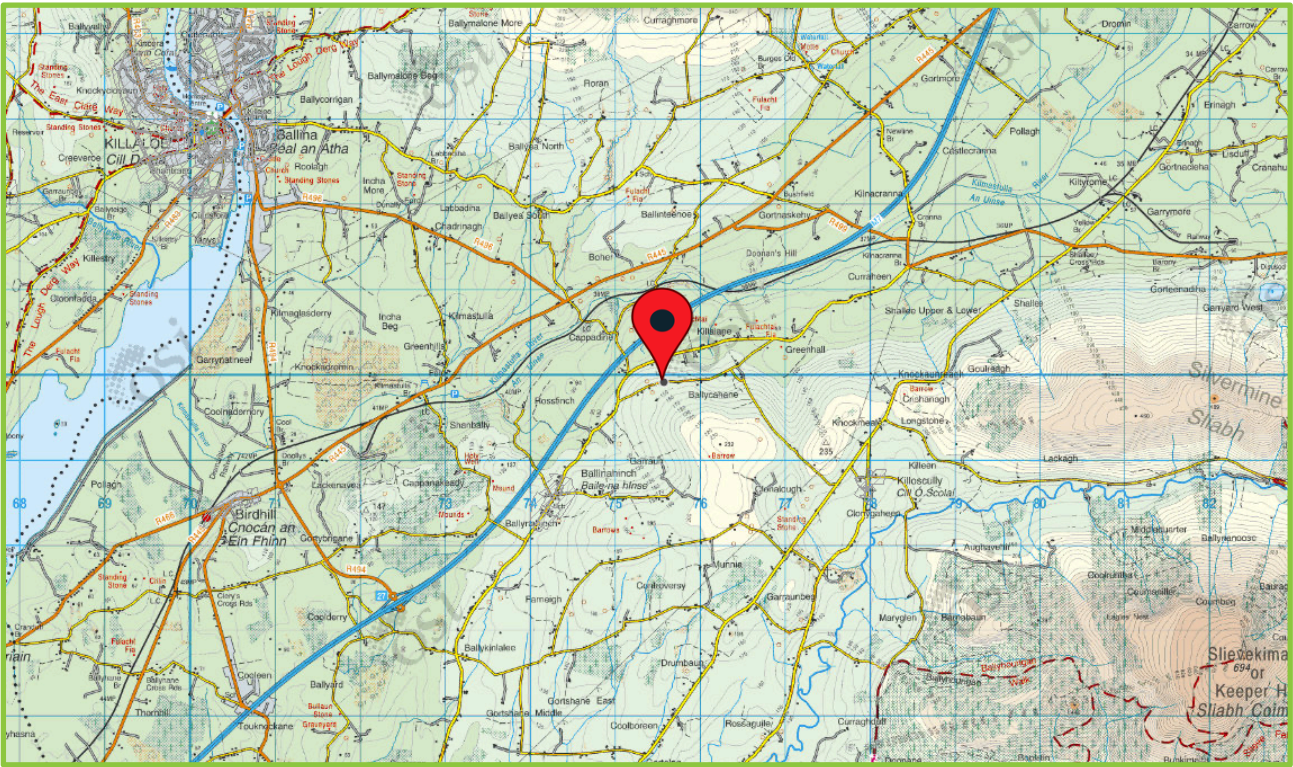


| Accommodation



TOTAL: 59 m²
FLOOR 1: 59 m²

MEASUREMENTS ARE CALCULATED BY CUBICASA TECHNOLOGY. DEEMED HIGHLY RELIABLE BUT NOT GUARANTEED.



Outside

Elevated Site with stunning views. There is a small storage shed to one side of the residence.

BER

G

663.27 kWh/m2/yr
BER No. 116710187

Viewing

By prior appointment.

Directions

From Ballinahinch village proceed straight towards the Silvermines. Take 1st right and the property is a short distance on the right with sign thereon.
Eircode: V94 W9W3

Price

€130,000



Selling agents

REA John Lee
Main Street,
Newport,
Co. Tipperary.
V94 FC8Y

T 061 378121
E info@reajohnlee.ie
W www.reajohnlee.ie

Sales agent

James Lee
BSc. Hon's., MRICS MSCSI
Director

T (086) 235 1221
E james@reajohnlee.ie

CONDITIONS TO BE NOTED: The terms set out herein are by way of partial summary. Intending purchasers should obtain a copy of the Conditions of Sale where the matters are dealt with comprehensively. Particulars and Conditions of sale are available from the Agents and the Solicitors with carriage of sale. REA John Lee for themselves and for the vendors whose agents they are, give notice that: 1) The particulars are set out in this Brochure and Schedule as a general outline for the guidance of intending purchasers and do not constitute part of an offer or contract. 2) All descriptions, dimensions, references to condition and necessary permissions for the use and occupation and other details are given in good faith and are believed to be correct but any intending purchasers should not rely on them as statements or representations of fact but must satisfy themselves by inspection or otherwise as to the correctness of each of them. 3) No person in the employment of REA John Lee has any authority to make representations or warranty whatsoever in relation to this property. All prices quoted are exclusive of VAT

reajohnlee.ie PSRA: 002764

