

For Sale

Asking Price: €295,000

**Sherry
FitzGerald**
O'Neill



Mounscakeha, Ahakista, Co Cork.

P75 E528

BER E2

sherryfitz.ie



Coastal 4 bedroom residence on 3.7 acres approximately, located adjacent to the scenic seafront village of Ahakista on Dunmanus Peninsula in West Cork. The property is set on a private sunny site with impressive views overlooking the Bay and the Mizen Peninsula in the distance.

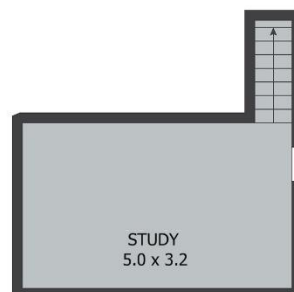
The accommodation extends to 163 sq. m. / 1,755 sq. ft. approximately. The many features of the property include oil fired central heating, solid fuel stove and pvc double glazed windows.

The accommodation includes entrance hallway, spacious living and sitting room, open plan kitchen/dining room, utility, 4 bedrooms – one having the benefit of an ensuite and a family bathroom. Upstairs there is an additional room that is useful as a study or extra living space.

The property enjoys a peaceful setting on a site of approximately 1.48ha / 3.70 acres, with two separate outbuildings – one detached garage and another that could be used as stables or a workshop. There is also a second access road to a generous paddock area to the east of the property offering potential buyers an opportunity to section off the property into separate lots. The gardens around the property are encircled by mature trees and shrubs.

Ahakista is a coastal village on the shores of Dunmanus Bay. Bantry town is less than a fifteen minute drive whilst the attractive West Cork villages of Kilcrohane, Ballydehob, Schull, Ahakista and the noted walking trails on the Goats Path are all within close proximity. Cork City is just over a one hour commute.





Moulnaskeha, Ahakista P75 E528

TOTAL APPROX. FLOOR AREA 163 SQ.M

Whilst every attempt has been made to ensure the accuracy of the floor plan contained here, measurements of doors, windows, rooms and any other items are approximate and no responsibility is taken for any error, omission, or misstatement. This plan is for illustrative purposes only and should be used as such by any prospective purchaser.

**NEGOTIATOR**

Olivia Hanafin
Sherry FitzGerald O'Neill
Wolfe Tone Square, Bantry,
Co Cork
T: 027 31030
E: info@sfoneill.ie

VIEWINGS

Strictly by Appointment Only

ENERGY RATING

BER: E2
Cert No: 116794017
EPI: 374.67 kWh/m²/yr

sherryfitz.ie
sfoneill.ie
myhome.ie
daft.ie
rightmove.co.uk

CONDITIONS TO BE NOTED: A full copy of our general brochure conditions can be viewed on our website at <http://www.sherryfitz.ie/terms>, or can be requested from your local Sherry FitzGerald office. We strongly recommend that you familiarise yourself with these general conditions. While care has been taken to ensure that information contained in Sherry FitzGerald publications is correct at the time of publication, changes in circumstances after the time of publication may impact on the accuracy of this. PSRA Registration No. 004158