

REA

Eoin Dillon



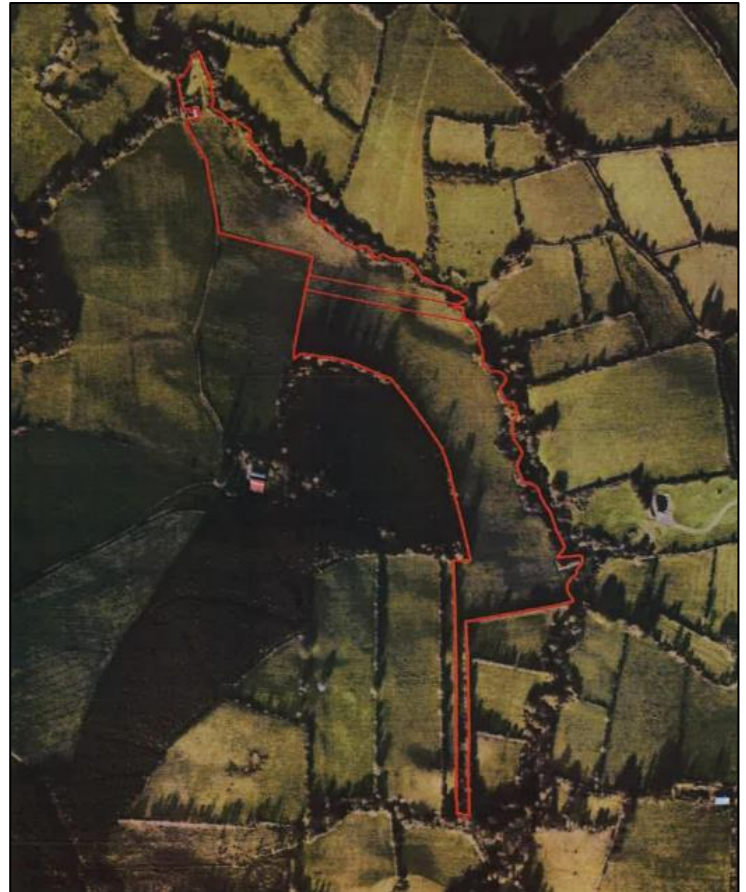
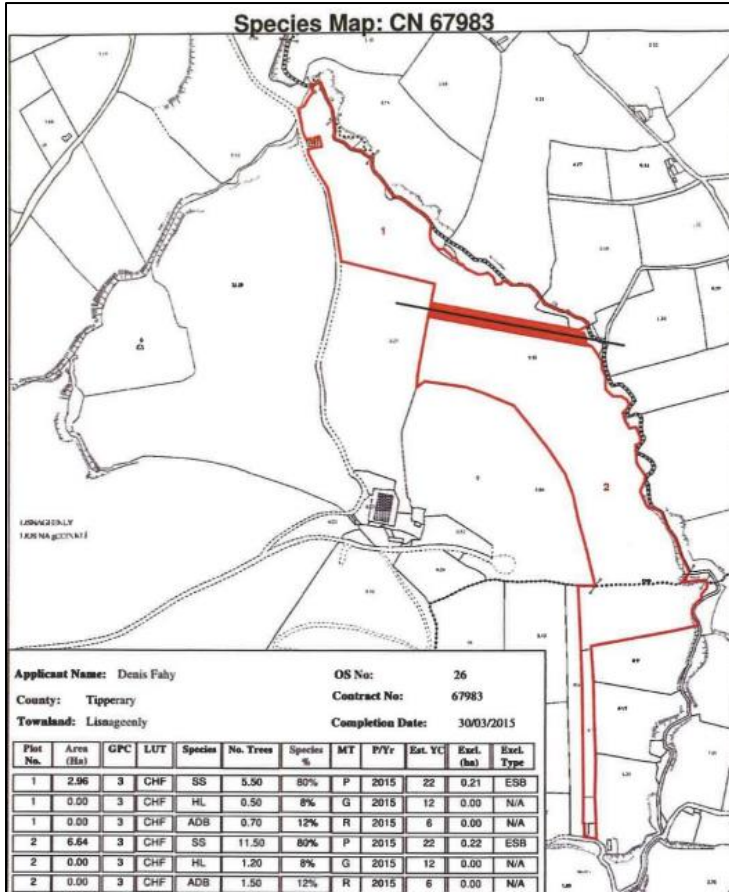
FORESTRY LAND FOR SALE
23.67 acres (9.58 hectares)

FOR SALE BY PRIVATE TREATY

Lisnagleenly,
Dolla,
Nenagh,
County Tipperary

AMV €135,000

BER EXEMPT



DESCRIPTION

23.67 acres (9.58 hectares) of forestry land for sale in Lisnagleenly, Dolla comprised in Folio TY27559F. These lands are in excellent condition throughout with the Stika Spruce and Hybrid Larch being the main crop. Green Belt Management Survey was carried out in July 2023 (copy available on request) and estimated yield class is 24. The crop is still young at present and is recommended that a felling license is applied for in 2031-2033. Viewing recommended.

DIRECTIONS

From Nenagh, travel to Dolla via the Ciamaltha Road (R500). Drive for 8km passing Silvermines GAA and at the cross roads turn right (towards Silvermines). Take the second left and continue for 1.2km. At the fork stay to the left and the property will be on your left. Nearest house Eircode: E45 RD90

Conditions to be noted:

The terms set out herein are by way of partial summary. Intending purchasers should obtain a copy of the Conditions of Sale where the matters are dealt with comprehensively. Particulars and Conditions of sale are available from the Agents and the Solicitors with carriage of sale. REA Dillon for themselves and for the vendors whose agents they are, give notice that: 1) The particulars are set out in this Brochure and Schedule as a general outline for the guidance of intending purchasers and do not constitute part of an offer or contract. 2) All descriptions, dimensions, references to condition and necessary permissions for the use and occupation and other details are given in good faith and are believed to be correct but any intending purchasers should not rely on them as statements or representations of fact but must satisfy themselves by inspection or otherwise as to the correctness of each of them. 3) No person in the employment of REA Dillon has any authority to make representations or warranty whatsoever in relation to this property. All prices quoted are exclusive of VAT

FEATURES

- 23.67 acres (9.58 Ha) of forestry land
- Comprised in part of folio TY27559F
- Excellent condition throughout
- Stika Spruce & Hybrid Larch being the main body of the crop.
- Planted 2015
- Estimated yield class 24.
- Forestry premiums are available until 2029 to the value of €4,880

VIEWING

Feel free to walk lands yourself or by appointment.

Negotiator: Eoin Dillon

42 Kenyon St. Nenagh, Co. Tipperary

T: 067 33468

E: info@readillon.ie

W: www.readillon.ie

PSRA: 001790