

A charming farmhouse set on about
3.7 acres close to Lough Derg

Meelick, Whitegate, Co. Clare, V94 KT3R

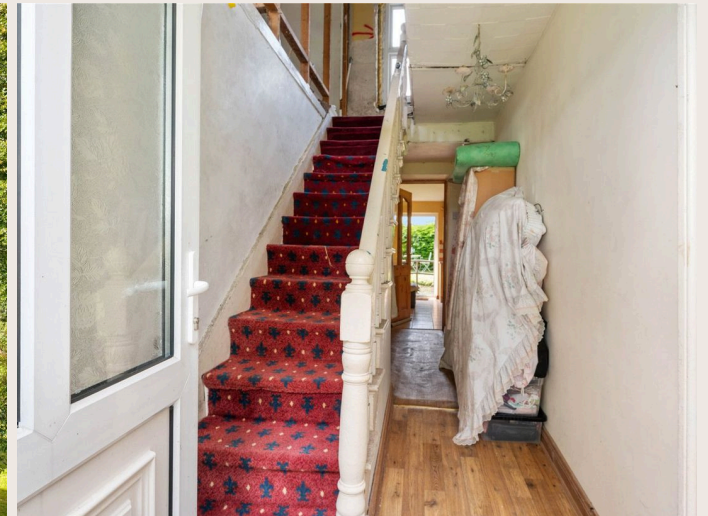


A charming farmhouse set on about 3.7 acres close to Lough Derg

Meelick, Whitegate, Co. Clare, V94 KT3R



For information purposes only
No identification only, although
accuracy cannot be guaranteed



A charming farmhouse set on about 3.7 acres close to Lough Derg

Meelick, Whitegate, Co. Clare, V94 KT3R



About this property

A traditional farmhouse set amidst the rolling countryside and set on about 3.7 acres of land, this offers a rare opportunity to acquire a period home with scope for renovation.

The house is a classic two-storey, three-bay farmhouse which dates from the 1930's which externally retains much of its original charm, including a symmetrical front façade, sash-style windows, and a slate roof. The setting is private and peaceful, surrounded by mature trees, hedgerows, and countryside views situated nearby Lough Derg. While the property is in need of complete modernisation, subject to the necessary planning consents, it offers a unique chance to create a beautiful countryside residence in a picturesque countryside setting.

The accommodation briefly comprises an entrance hall which connects to both a sitting room and living room at the front of the house and all part of the original footprint. An extension was added in c. 2010 with a kitchen/dining area, bedroom and utility to the rear.

Upstairs, the space has been partially stripped back to its original framework and is now ready for renovation. The layout lends itself to creating 3-4 bedrooms (subject to planning and renovation works),

offering a new owner the opportunity to design a bespoke family home full of character.

To the rear of the house is a courtyard with traditional outbuildings, ideal for general storage along with a Dutch barn.

A full layout of the accommodation is shown on the adjoining floorplans.

Gardens, Grounds & Land

The gardens around the house extend to about 0.9 acre / 0.36 hectare featuring lawned areas, mature trees, and hedging that ensure privacy and a sense of seclusion.

Directly across from the house is a grazing field extending to about 2.85 acres / 1.15 hectare, ideal for equestrian use or small-scale farming.

A charming farmhouse set on about 3.7 acres close to Lough Derg

Meelick, Whitegate, Co. Clare, V94 KT3R



A charming farmhouse set on about 3.7 acres close to Lough Derg

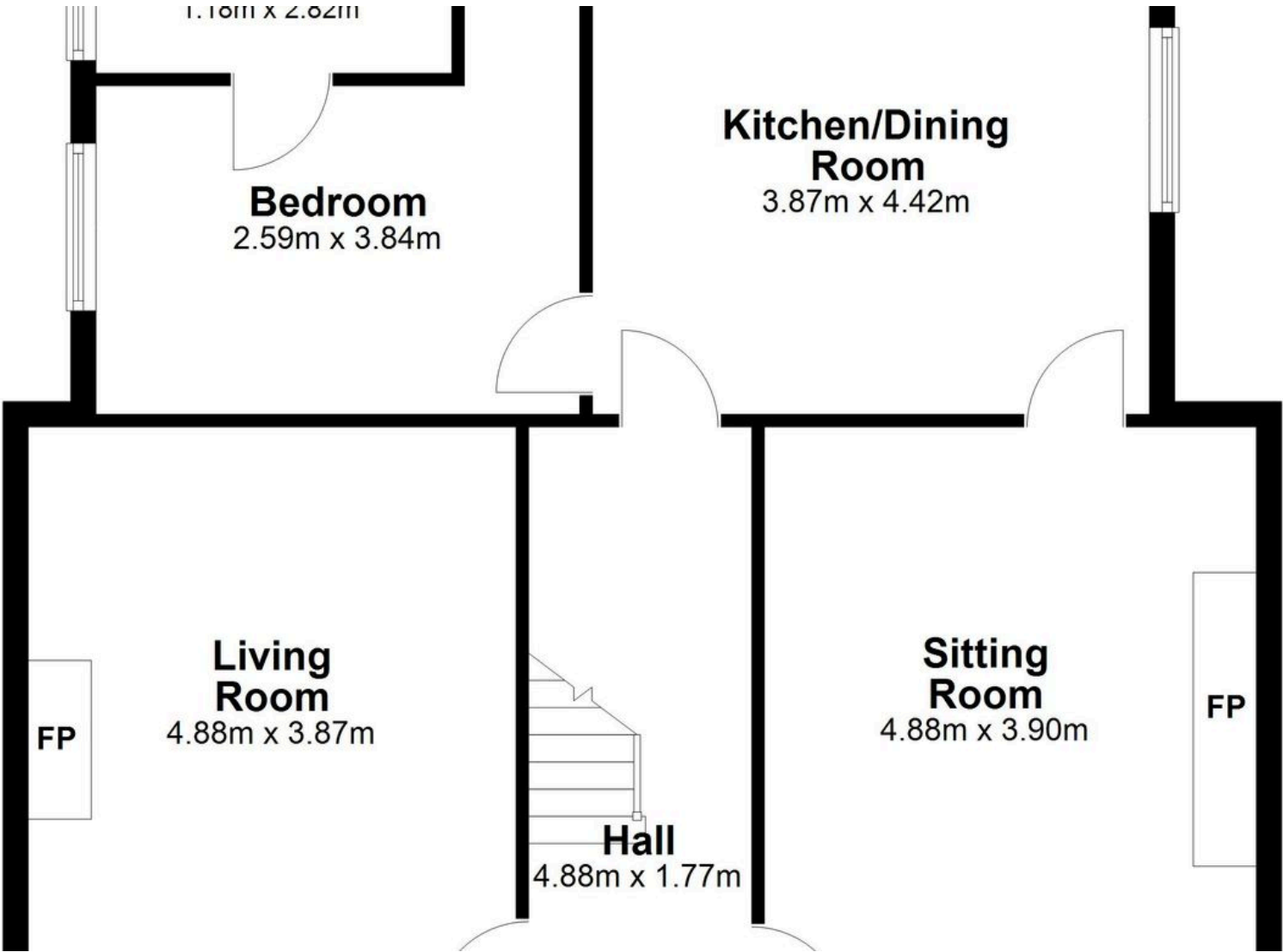
Meelick, Whitegate, Co. Clare, V94 KT3R



Plans

 1,392 sq ft

 3.7 acres



A charming farmhouse set on about 3.7 acres close to Lough Derg

Meelick, Whitegate, Co. Clare, V94 KT3R

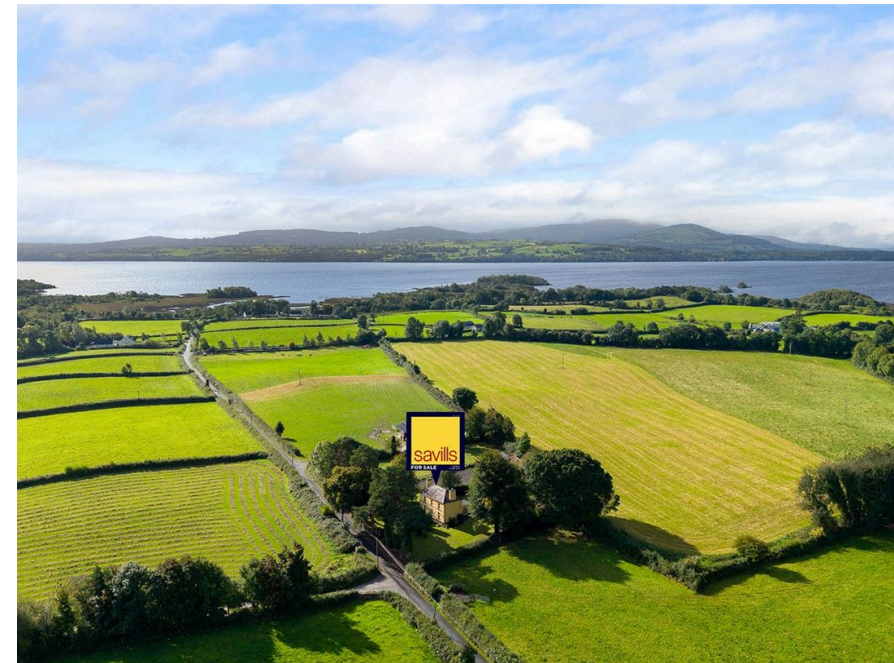
savills



Local Area

County Clare is renowned for its dramatic and changing landscape, from the world-renowned Cliffs of Moher to the unique limestone landscape of the Burren. Located close by to Meelick is the famous Lough Derg which is commonly regarded as Ireland's premier lake on the Shannon-Erne Waterway.

The nearest village to the house is Whitegate (2 km) which has pubs, shops, a church and a national school.



A charming farmhouse set on about 3.7 acres close to Lough Derg

Meelick, Whitegate, Co. Clare, V94 KT3R



Property Details

Key Features

- A superb renovation opportunity
- Rural setting yet close to Whitegate and Lough Derg
- Traditional outbuildings
- Mature grounds
- About 3.7 acres

Services & Additional Information

Septic Tank, Well Water

BER

BER Rating = E2



A charming farmhouse set on about 3.7 acres close to Lough Derg

Meelick, Whitegate, Co. Clare, V94 KT3R



Enquire



Liam McCarthy
Dublin - Country
+353 83 878 4989
liam.mccarthy@savills.ie

More Information



View on website



View Digital Brochure



Property Search

Viewing strictly by appointment

Property Ref: DUY250087



Important Notice: Savills, its clients and any joint agents give notice that 1: They are not authorised to make or give any representations or warranties in relation to the property either here or elsewhere, either on their own behalf or on behalf of their client or otherwise. They assume no responsibility for any statement that may be made in these particulars. These particulars do not form part of any offer or contract and must not be relied upon as statements or representations of fact. 2: Any areas, measurements or distances are approximate. The text, photographs and plans are for guidance only and are not necessarily comprehensive. It should not be assumed that the property has all necessary planning, building regulation or other consents and Savills have not tested any services, equipment or facilities. Purchasers must satisfy themselves by inspection or otherwise. *powered by* **FluoPro**