





Land C. 20.5 Acres/ 8.3 Ha.,  
Punchestown, Upper Killeel, Kildare, Co. Kildare.

 (045) 865 568

 [www.jpmdoyle.ie](http://www.jpmdoyle.ie)

## For Sale by Private Treaty

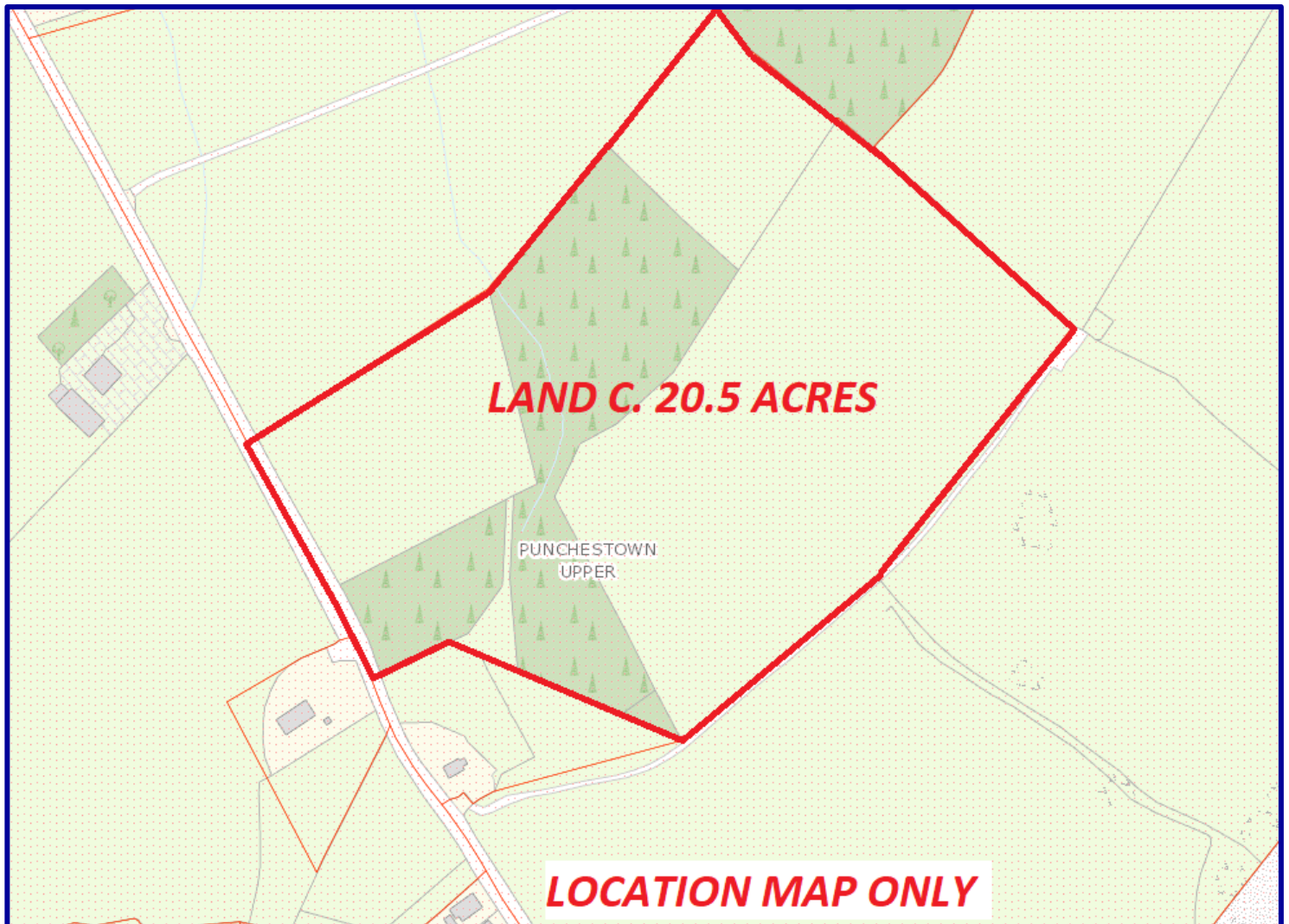
### LOCATION:

The land is situated only a stone's throw from the capital and convenient to Kill, Rathcoole and Blessington. Nestled on a quiet country road overlooking the quaint village of Killeel on the Wicklow/Kildare border, between the N7 and N81, c. 6 miles from Rathcoole, c. 7 miles from Naas and c. 15 miles from Dublin City Centre. An abundance of sporting activities are close by, including golf, equestrian pursuits and water activities on the nearby Blessington Lakes. Within 10 minutes of the Luas stop in Citywest.

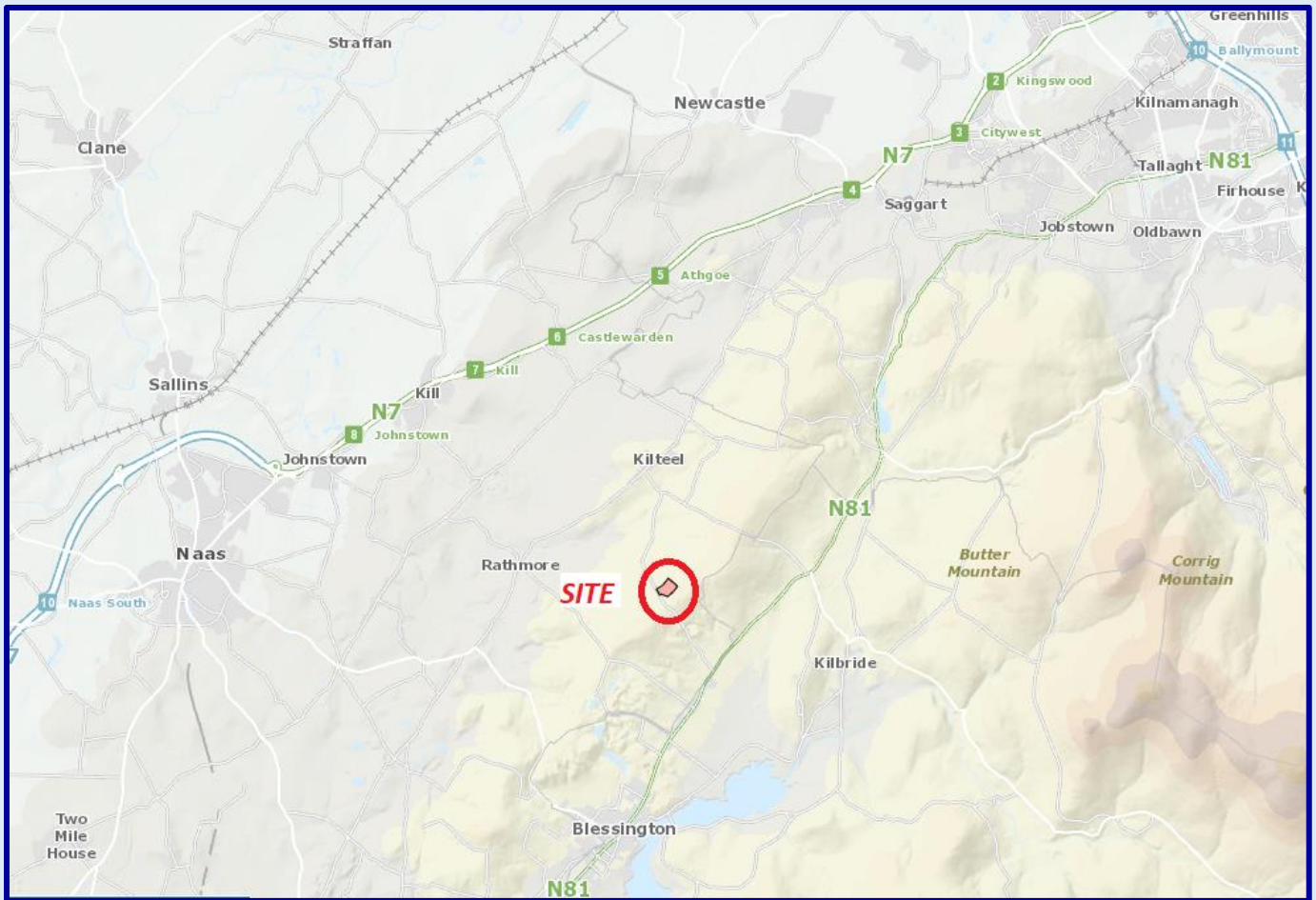
**Blessington:** c. 5 miles    **Naas:** c. 7 miles    **M50 Roundabout:** c. 12 miles    **Dublin:** c. 15 miles.

### DESCRIPTION:

Land c. 20.5 Acres/ 8.3 Hectares laid out in two fields of good quality land, and c 5.5 Acres planted in Mature forestry. The lands have extensive road frontage. An ideal hobby farm or out farm in this most convenient and sought-after location.







**VIEWING:**

**BY APPOINTMENT ONLY**

**PRICE REGION:**

**€195,000**



JP&M  
**DOYLE**

Established. 1952

**Main Street, Blessington, Co. Wicklow, W91 RK28.**

t: (045) 865568

f: (045) 891425

e: [blessington@jpmdoyle.ie](mailto:blessington@jpmdoyle.ie)

PSRA Licence: 002264

- J.P. & M. Doyle Ltd., for themselves and for the vendors of this property whose agents they are, give notice that:
- (1) the particulars are set out as a general outline for the guidance of intending purchasers and do not constitute part of an offer or contract.
  - (2) all description, dimensions, references to condition and necessary permission of use and occupation, and other details are given in good faith and are believed to be correct, but any intending purchasers or tenants should not rely on them as statements or representations of fact but must satisfy themselves by inspection or otherwise as to the correctness of each of them.
  - (3) no person in the employment of J.P. & M. Doyle Ltd. has any authority to make or give any representations or warranty whatever in relation to the property.