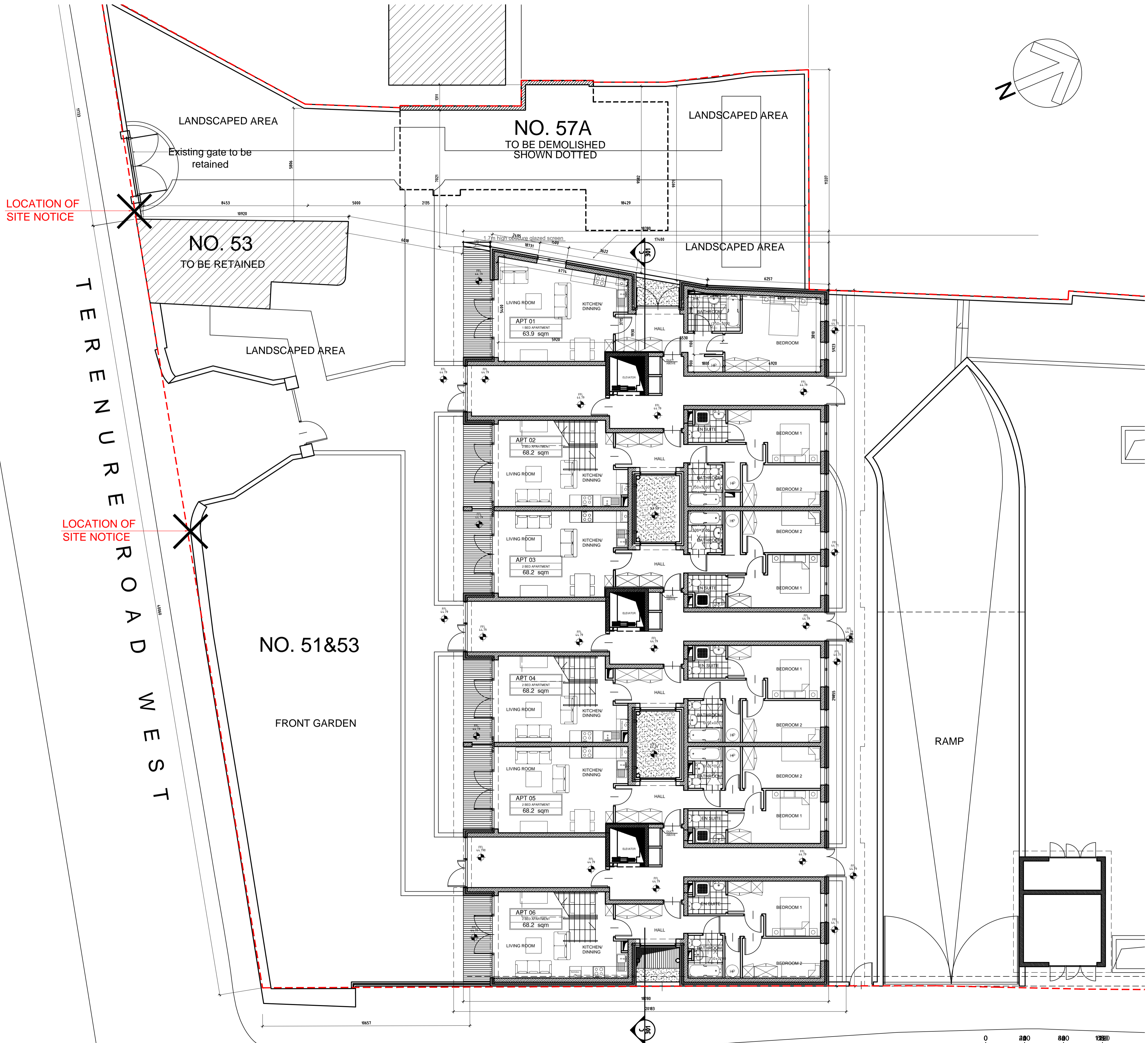
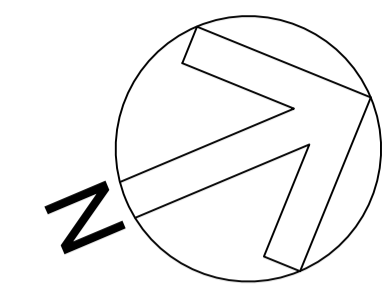
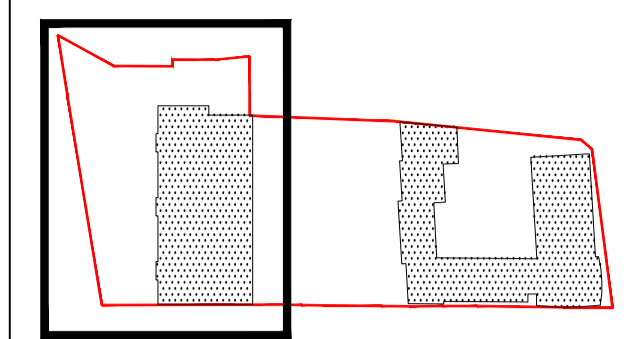


DO NOT SCALE FROM THIS DRAWING. USE FIGURED DIMENSIONS IN ALL CASES.
 VERIFY DIMENSIONS ON SITE AND REPORT ANY DISCREPANCIES TO THE ARCHITECTS IMMEDIATELY.
 THIS DRAWING TO BE READ IN CONJUNCTION WITH THE ARCHITECTS SPECIFICATION.
 1. APPROVED FOR CONSTRUCTION BY THE ARCHITECTS SPECIFICATION.

NOTES



LOCATION OF SITE NOTICE

LOCATION OF SITE NOTICE

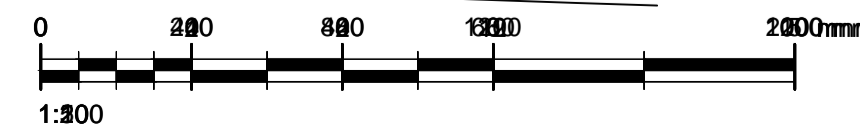
TERENURE ROAD WEST

NO. 51&53

FRONT GARDEN

RAMP

ORIGINAL SHEET SIZE = A1



REV	DATE	BY	NOTES

DWG. SERIES: 3.2 COMPLIANCE

JOB
 Proposed new development at no. 51 & 53
 and demolition of no. 57a
 Terenure Road West, Dublin 6w

CLIENT
 MR THOMAS DURCAN

DRAWING
 GROUND FLOOR PLAN

DATE August 2007 **SCALE** 1:200
DRN Elwira Kowalka **CHECKED** Patrycja Mlynarska

JOB NUMBER 04-160A **DWG NUMBER** 3.1_101 **REVISION** 0

ANTHONY REDDY ASSOCIATES
 ARCHITECTS
 PLANNING CONSULTANTS
 PROJECT MANAGERS
 INTERIOR DESIGNERS

REGIONAL OFFICE
 43 O'Connell Street, Kildare
 TEL: 01452 77000
 FAX: 01452 77001

DUBLIN OFFICE
 111 St. James's Street, Dublin 8
 TEL: 01452 77000
 FAX: 01452 77001

www.anthonymreddy.com