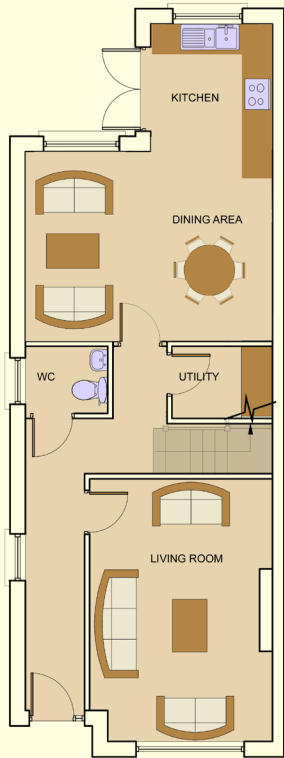
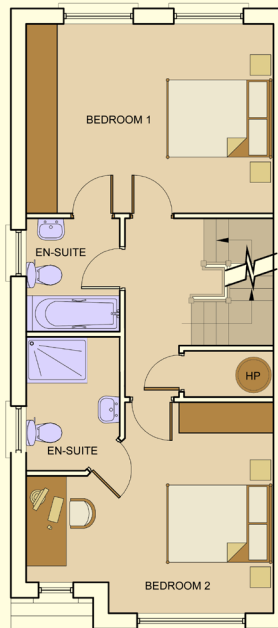


House Type L

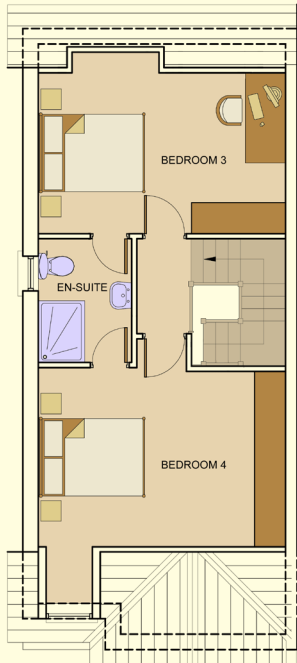
c.1,830 Square Feet
4 Bedroom



Ground Floor



First Floor



Second Floor

Approximate Internal Layout

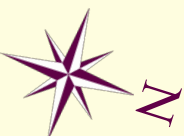


- Choice of High Quality Luxury Kitchens.
- Granite Worktops and Splashbacks.
- Generous Tiling in Bathrooms.
- Feature Natural Gas Fire.
- High Efficiency Gas Boilers.
- Environmentally Friendly B Energy Rating.
- Solar Panels Fitted to Heat Domestic Water.
- Feature 9ft. ceilings.
- Centralised Vacuum System.
- Heated Towel Rails.
- No Management Fees.

PEYTON

STONEY LANE, RATHCOOLE, CO. DUBLIN.

RATHCOOLE, CO. DUBLIN



Type K	3 Bedroom Semi Detached c.1,400 Sq. Ft.
Type K1	3 Bedroom Semi Detached c.1,550 Sq. Ft.
Type K2	3 Bedroom Detached c.1,550 Sq. Ft.
Type L	4 Bedroom Semi Detached c.1,830 Sq. Ft.
Type L1	4 Bedroom Semi Detached c.2,050 Sq. Ft.
Type H	3 Bedroom Semi Detached c.1,420 Sq. Ft.
Type H1	3 Bedroom Semi Detached c.1,670 Sq. Ft.
Type N	3 Bedroom Semi Detached c.1,607 Sq. Ft.
Type Q	3 Bedroom Terrace c.1,686 Sq. Ft.
Type S	3 Bedroom End of Terrace c.1,803 Sq. Ft.

100

Redmond  Auctioneers



Finnegan
Menton

Directions

From Dublin take the N7 (Naas / Limerick Road). Take exit 4 signed Rathcoole. Take second exit off roundabout. Approach next roundabout and take first exit signed Rathcoole. Continue straight ahead and enter Rathcoole Village. Take a Left off Main Street after Tesco onto Stony Lane. Peyton is located 300 metres on your right hand side.

Developer

Blackchurch Homes Limited



WWW.PEYTON.IE