

REA

T&J Gavigan

PRSA No. 00 - 1249



3 BEDROOM MID - TERRACE IN A QUIET CUL DE SAC

FOR SALE BY PRIVATE TREATY

**123 Blackcastle Lodge
Navan
Co. Meath
C15 ENN3**

ASKING PRICE: €215,000



the mark of
property
professionalism
worldwide



navan@reatigavigan.ie

CALL NOW ON 046 – 902 32 32

DESCRIPTION

No. 123 Blackcastle Lodge is a spacious 3 bedroom mid - terrace house perfectly positioned in a quiet cul de sac of just 4 houses. The property has been maintained in excellent condition and boasts spacious and bright accommodation. No. 123 is a perfect home for a starting family with space for every family member. Viewings are highly recommended with REA T&J Gavigan.

LOCATION

Blackcastle Lodge is located just off Flower Hill, 5 minutes` walk to Navan town centre. Flower Hill has a mix of residential and commercial developments. St. Paul`s Primary School, Blackcastle Shopping Centre and all of the amenities of Navan are on its doorstep. It also enjoys convenient access to Dublin City, Airport and surrounding areas via its proximity to both the N3 and M3 motorway.

FEATURES

- Minutes from town centre
- c. 50 minutes from Dublin City Centre
- Located in a quiet cul de sac of just 4 houses
- Excellent condition
- Parking to the front
- Enclosed rear garden

SERVICES

Water: Mains

Sewage: Mains

Heating: Natural Gas Heating

OUTSIDE

Enclosed rear garden laid to lawn. Garden shed. Not overlooked at the front.



ACCOMMODATION

GROUND FLOOR

Entrance Hallway:

Cream tiling through the hallway. Alarm pad and under stairs storage. Cream carpeted stairs to first floor.

Living Room: 5.12m x 3.32m

Wooden flooring. Large bay window overlooking the front. Fireplace with black insert & hearth and gas fire. Double doors leading to the kitchen / dining room. Coving & centre piece.

Kitchen cum Dining Area: 5.51m x 3.41m

Cream tiling to floor and over counter tops. Fully fitted kitchen with fridge freezer, washing machine, dishwasher, oven/hob and extractor fan. Window overlooking the back and patio doors leading to the rear garden.

Guest wc: 1.58m x 0.93m

Tiled flooring. White w.c. and w.h.b.

FIRST FLOOR

Cream carpet to landing and bedrooms. Hot Press.

Master Bedroom: 4.19m x 3.04m

Built in wardrobes. Overlooking the rear garden.

En-Suite: 2.30m x 1.22m

White w.c., w.h.b. and shower cubicle. Tiled flooring, shower cubicle and back splash. Window to the side.

Bedroom 2: 3.86m x 2.65m

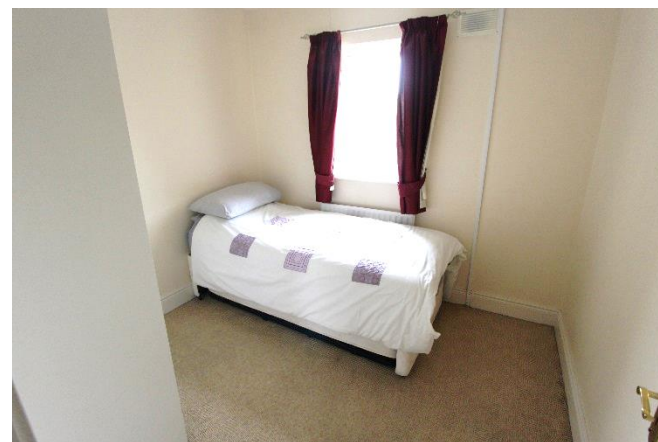
Built in wardrobes. Overlooking the front garden.

Bedroom 3: 2.76m x 2.49m

Built in wardrobes. Overlooking the front garden.

Main Bathroom: 2.32m x 1.69m

White w.c., w.h.b. and bath with Triton Shower over bath. Tiled flooring, over bath to ceiling and back splash. Velux window.





VIEWING

*Please contact us to arrange an appointment.
046-9023232 or email navan@reatjgavigan.ie*

PRICE

€215,000

CONTACT NEGOTIATOR

REA T&J Gavigan
35 Railway Street, Navan

T: 046 – 902 32 32
E: navan@reatjgavigan.ie
W: www.reatjgavigan.ie

BER INFORMATION

BER: C1
BER No.: 111866604
Energy Performance Indicator: 169.32 kWh/m²/yr

DIRECTIONS

From Dublin, travel the M3 motorway exiting at junction 8 (Navan South). At the roundabout take the first exit and continue straight through 3 sets of traffic lights. Turn right at the 4th set of traffic lights and go up the Flower Hill. After the traffic lights (half way up) turn right into Blackcastle Lodge. Keep to the right and turn left at the roundabout. No. 123 is located on the right hand side. See REA T&J Gaviagn sign.



the mark of
property
professionalism
worldwide



navan@reatjgavigan.ie

CALL NOW ON 046 – 902 32 32

Conditions to be noted:

The above particulars are issued on the understanding that all negotiations concerning the property are conducted through REA T&J Gavigan. Every care has been taken in the preparations of these particulars but we are not responsible for any inaccuracy or for any expense occurred if the property has been let, sold or withdrawn from sale or if it is not suitable for your purpose. These particulars are for information purposes only and do not form part of any contract.