

# For Sale

Asking Price: €425,000

**Sherry  
FitzGerald**  
O'Leary Kinsella



North Ridge,  
Killacoran,  
Aughrim,  
Co. Wicklow,  
Y14 DH92

**BER** C2

[sherryfitz.ie](http://sherryfitz.ie)

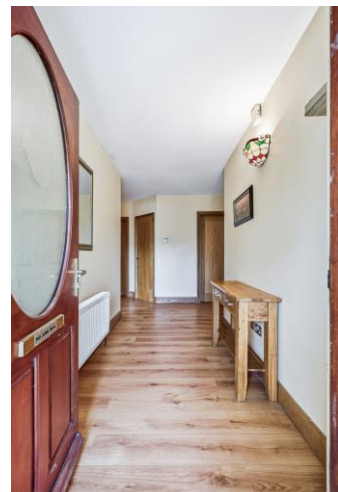


North Ridge is an attractive four-bedroom detached bungalow enjoying a picturesque rural setting on the outskirts of the ever-popular village of Aughrim. Extending to approximately 123 sq. m (1,324 sq. ft.), this well-appointed home has been thoughtfully designed to maximise natural light and take full advantage of its beautiful surroundings, offering bright, spacious accommodation ideally suited to modern family living.

The property combines generous, light-filled interiors with beautifully maintained gardens, creating a wonderful sense of comfort and tranquility. Offering an excellent balance of privacy, peace and convenience, North Ridge presents an ideal opportunity for those seeking a family home in a scenic countryside location.

Occupying approximately 0.76 acres of mature grounds, the property enjoys a highly sought-after position in a quiet and scenic rural setting, just minutes from Aughrim. Renowned for its charm and strong sense of community, the village offers an excellent range of amenities including shops, school, café, restaurants, traditional pubs and a church.

For commuters, South Dublin is readily accessible via the N11/M11/M50 road network, while regular rail services from Arklow and Rathdrum, both approximately 14 km away, provide convenient connections to Dublin and further afield.



## Accommodation

**Entrance** 1.7m x 2.7m (5'7" x 8'10"): wood flooring.

**Hallway** 9.9m x 2.2m (32'6" x 7'3"): wood flooring.

**Living Room** 5.6m x 3.7m (18'4" x 12'2"): wood flooring and feature open fireplace.

**Dining Room** 3.1m x 3.7m (10'2" x 12'2"): tiled flooring.

**Kitchen** 4.5m x 3.5m (14'9" x 11'6"): tiled flooring and backsplash, fitted kitchen units.

**Utility Room** 2.8m x 2.3m (9'2" x 7'7"): tiled flooring, fitted units and plumbed for washing machine and dryer.

**Bathroom** 2.2m x 2.3m (7'3" x 7'7"): tiled flooring and walls, bath, shower, w.c. and wash hand basin.

**Master Bedroom** 3.8m x 3.0m (12'6" x 9'10"): wood flooring.

**Ensuite** 2.7m x 1.3m (8'10" x 4'3"): tiled flooring and walls, shower, w.c. and wash hand basin.

**Bedroom 2** 3.8m x 2.7m (12'6" x 8'10"): wood flooring.

**Bedroom 3** 3.6m x 2.9m (11'10" x 9'6"): wood flooring.

**Bedroom 4** 2.6m x 3.0m (8'6" x 9'10"): wood flooring.





### Special Features & Services

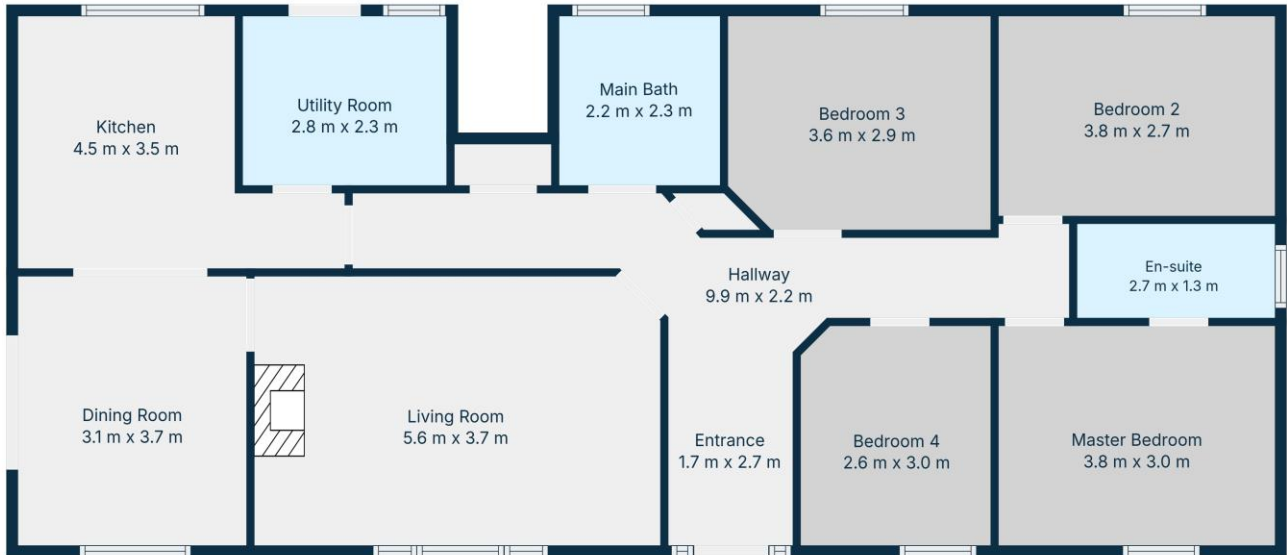
- Detached four-bedroom dwelling approx. 1,324sq ft.
- Quiet scenic setting.
- Superb location
- Excellent garden.
- Exceptional family home.
- Brand new water pump.
- 8 camera security system.





Directions  
Y14DH92





**TOTAL: 123 m<sup>2</sup>**  
 1st floor: 123 m<sup>2</sup>  
 EXCLUDED AREAS: WALLS: 8 m<sup>2</sup>

Floor Plan Created By Cubicasa App. Measurements Deemed Highly Reliable But Not Guaranteed.



### CONTACT

Sherry FitzGerald O'Leary Kinsella  
 Tara View, Esmonde Street, Gorey,  
 Co Wexford  
 T: 053 9430088  
 E: info@olearykinsella.com

### OFFICE OPENING HOURS

Our office opening hours are:  
 9am – 1pm & 2pm – 5.30pm  
 Monday to Friday.  
 Viewings conducted 6 days  
 (including Saturdays).

### VIEWING

Viewing by appointment.

[sherryfitz.ie](http://sherryfitz.ie)

**CONDITIONS TO BE NOTED:** A full copy of our general brochure conditions can be viewed on our website at <http://www.sherryfitz.ie/terms>, or can be requested from your local Sherry FitzGerald office. We strongly recommend that you familiarize yourself with these general conditions.  
 PSRA Registration No. 001510