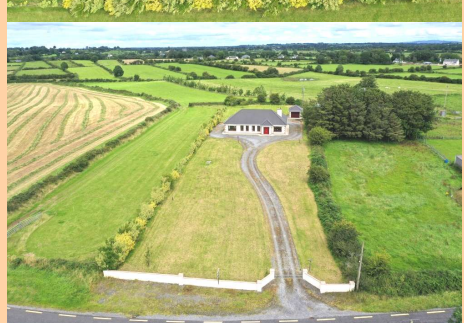
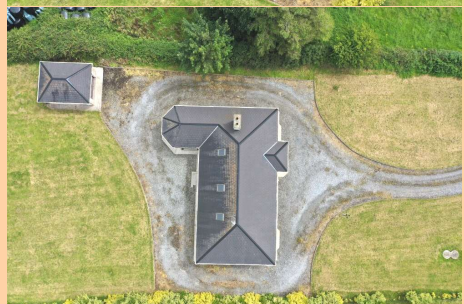


For Sale

Corderryhugh, Castlecoote
Co. Roscommon. F42 D576
4 Bedrooms| Detached



Offers in Excess of €210,000

Attractive four bedroom bungalow residence in excellent condition throughout located close to the villages of Castlecoote, Creggs and Athleague. Boasting spacious living accommodation, standing on an elevated site (c. 0.88 acres) and detached garage to rear, viewing comes highly recommended.

Accommodation includes porch to front, reception hallway, sitting room, kitchen/dining room, conservatory/sunroom, utility, bedrooms four in all with two en-suite and bathroom.

**To arrange a viewing, contact the office on 090-6663700
Viewings at evenings, weekends and Bank Holidays also accommodated.**



Porch to Front

7'2" (2.18m) x 3'3" (0.99m) Door to, tiled floor

Reception Hallway

15'2" (4.62m) x 6'3" (1.91m) Door to, wooden floor, hotpress (airing cupboard) off

Sitting Room

15'2" (4.62m) x 13'3" (4.04m) Cast iron fireplace with marble surround, bay window to front, carpeted



Kitchen/Dining Room

23'10" (7.26m) x 11'11" (3.63m) Fully fitted kitchen including built in cooker, extractor fan, dishwasher, tiled floor, inset tiling, solid fuel stove (assists heating), centre lights, double doors to Sun Room/ Conservatory

Conservatory/Sun Room

14'5" (4.39m) x 11'9" (3.58m) Carpeted, spotlights, patio door to rear



Utility

8'8" (2.64m) x 6'6" (1.98m) Fitted units, built in fridge freezer, washing machine, dryer, gas hob, inset tiling, tiled floor, door to rear

Bedroom One

11'5" (3.48m) x 11'0" (3.35m) Carpeted

Bedroom Two

11'5" (3.48m) x 11'0" (3.35m) Carpeted



Bedroom Three

12'3" (3.73m) x 10'11" (3.33m) Carpeted, bay window to front, en-suite off 7'9" x 3'10", toilet, wash hand basin, shower, fully tiled

Bedroom Four

Carpeted, build in wardrobes, en-suite off 11'10" x 3'3", toilet, wash hand basin, shower, fully tiled



Bathroom

11'10" (3.61m) x 8'10" (2.69m) Toilet, wash hand basin, bath, shower separate, fully tiled

Attic Area

46'0" (14.02m) x 17'0" (5.18m) Stira stairs to, floored, 3 Velux windows to rear, suitable for development into accommodation

- Garage 17'6" x 12' - Roller door to front, door to side, electric servicing
- Private well water
- Oil fired central heating, alarmed, CCTV system
- Laid lawns, large garden to front & rear
- Overall site area c. 0.88 acres
- Cast iron entrance gates
- Driveway kerbed & stoned, extends around house
- Block wall to front, natural hedging to side & rear boundaries
- Garden lights in front garden









