

For Sale

Asking Price: €295,000

**Sherry
FitzGerald**
O'Neill



2 Main Street, Skibbereen,
Co Cork, P81 TW74

BER D1

sherryfitz.ie



Prime Commercial Unit in the heart of Skibbereen town centre. Located in a prominent position on Skibbereen's Main Street, this substantial commercial property offers an excellent opportunity for a wide range of business uses.

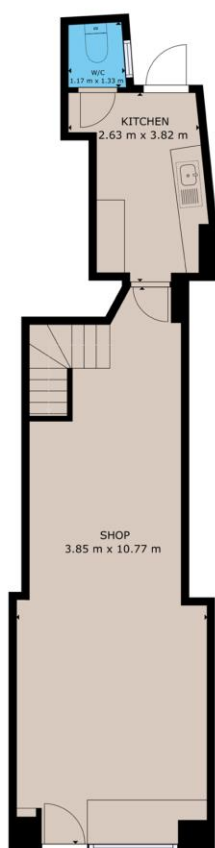
Spanning three floors, the accommodation is both flexible and well-proportioned, making it ideal for retail, office, or mixed-use purposes.

The ground floor comprises a bright and welcoming traditional style shop front with excellent street visibility, along with a well-equipped kitchen and WC to the rear. The upper floors feature three separate offices, providing quiet and comfortable workspaces, as well as a shower room for added convenience.

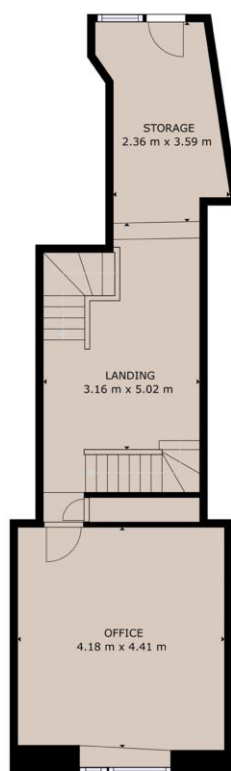
To the rear of the property is a private yard, offering valuable outdoor space and benefiting from rear access — ideal for deliveries, storage, or further development potential (subject to planning).

This is a fantastic opportunity to acquire a centrally located commercial premises in one of West Cork's most vibrant market towns, with strong footfall and excellent local amenities on the doorstep.





GROUND FLOOR



FIRST FLOOR



SECOND FLOOR

GROSS INTERNAL AREA

TOTAL : 133.40m²

Whilst every attempt has been made to ensure the accuracy of the floor plan contained here, measurements of doors, windows, rooms and any other items are approximate and no responsibility is taken for any error, omission, or misstatement. This plan is for illustrative purposes only and should be used as such by any prospective purchaser.



NEGOTIATOR
Niamh Moloney
Sherry FitzGerald O'Neill
37 North Street, Skibbereen,
Co Cork
T: 028 21404
E: info@sfoneill.ie

VIEWING
Strictly by prior appointment

ENERGY RATING
Rating: D1
BER No.: 801079203
EPI: 404.23 kWh/m²/yr

sherryfitz.ie
sfoneill.ie
daft.ie
myhome.ie

CONDITIONS TO BE NOTED: A full copy of our general brochure conditions can be viewed on our website at <http://www.sherryfitz.ie/terms>, or can be requested from your local Sherry FitzGerald office. We strongly recommend that you familiarise yourself with these general conditions. While care has been taken to ensure that information contained in Sherry FitzGerald publications is correct at the time of publication, changes in circumstances after the time of publication may impact on the accuracy of this. PSRA Registration No. 004158