



DOMVILLE
CHERRYWOOD

DOMVILLE.IE



William Neville & Sons



WELCOME TO DOMVILLE

Domville is a high quality new development of 80 houses in a prime South Dublin location with excellent transport links.





THE DEVELOPMENT

MUCH MORE THAN JUST HOUSES

This is a well designed development with a very attractive site layout incorporating well positioned residents open space and a children's play area.

The development contains a fine mix of house types, 41 of which are three bedroom two storey houses and 39 are three storey four bedroom houses. There is a mixture of semi-detached, end and mid terrace houses spread over the seven house types.







NEW ADVENTURES AWAIT

JUST AROUND THE CORNER

Cherrywood is one of the best serviced locations in Ireland. Dublin Airport is just 35 minutes away, the M50 and N11 are within a short drive, and dedicated Luas stops (including Laughanstown and Cherrywood) are just around the corner. The city centre is just 25 minutes away with access also available via an approximate 5-minute walk to a bus stop that is on the most frequent serviced bus route in the country, the N11. O'Connell Street can be accessed aboard the cross-town 155, which traverses the city. The stop is also serviced by the number 145, which takes you to Heuston Station and other bus routes.

AN UNPARALLELED LOCATION FROM MOUNTAINS TO THE SEA

Cherrywood is South County Dublin's newest urban centre, with its excellent development potential enhanced by its proximity to so many amenities. Cherrywood is one of the best planned urban areas in Ireland.

The attraction of the locality is evidenced by its strong work / life balance potential, with the urban city centre just 25 minutes away and the picturesque rural escape of Wicklow and Powerscourt just over 10 minutes away. Situated at

the foot of the Dublin Mountains, and a short drive from the sea, Domville is in the heartland of active healthy living and just moments away from the bustle of city life.

The surrounding towns of Dalkey, Killiney, Foxrock, Cabinteely and Enniskerry are all less than about a 15-minute drive away, which are known for their excellent cafés, restaurants, bars and leisure facilities.



CHERRYWOOD TO CORNELSCOURT GREENWAY

Dublin Cycling Campaign recently lodged a detailed submission with Dun Laoghaire Rathdown County Council (DLRCC) in relation to a proposed 1.9km long greenway/cycle route from Cherrywood to Cornelscourt.

This route is an important link in the long term development of the Greater Dublin Cycle Network, and particularly in the proposed continued

development of the Cherrywood complex. It is proposed that the route will be constructed to the highest standards to encourage maximum use for people on bicycles of all ages and abilities. This is why the Campaign is ensuring that routes adhere to the appropriate standards. The potential to link to a wider rural greenway network from Cherrywood is also an important feature.

TULLY PARK

Tully Park is located at the centre of the Cherrywood SDZ development, and the park itself is centered on the ruins of Tully Church. The design provides an appropriate setting for this National Monument, as well as a variety of facilities to support the needs of the local population, befitting its designation in the planning scheme as a 'Flagship Park'. There are associated roadways, footpaths, cycle lanes and car parking, also a park building (café) and public lighting.

The design concept for Tully Park creates high quality spaces with a range of facilities appropriate

to the spaces. The park is designed in four zones, each with a different, but complementary character. The space allocated to Tully Park in the Planning Scheme is split by Lehaunstown Lane, existing hedgerows and tree lines, and the topography of the site, which varies considerably in each of the segments of the site. The design uses these varying characteristics as inspiration for the features and facilities and also to create unique spaces that combine to form a single high quality park. There are interfaces between the zones and the adjacent housing areas, and addressing connectivity through the park as a whole.



THE PARK, CARRICKMINES



CABINTEELY VILLAGE

VILLAGE LIFESTYLE

AT A RELAXED PACE

The neighbouring Cabinteely village contains every local business a family needs, and is also served by two large shopping centres. The neighbouring Cornelscourt Centre is home to

the renowned flagship store of Dunnes Stores, while The Park in Carrickmines includes major retailers, including Harvey Norman, TK Maxx and Heaton's, among other big names.



AMENITIES GALORE










JUST OUTSIDE YOUR DOOR

A short drive or trip on the Luas provides access to Dundrum Town Centre, the largest and most exclusive retail shopping centre in Ireland. Cherrywood, with its planned vibrant village centre will provide shops, restaurants and cafes, and crèche facilities once completed.

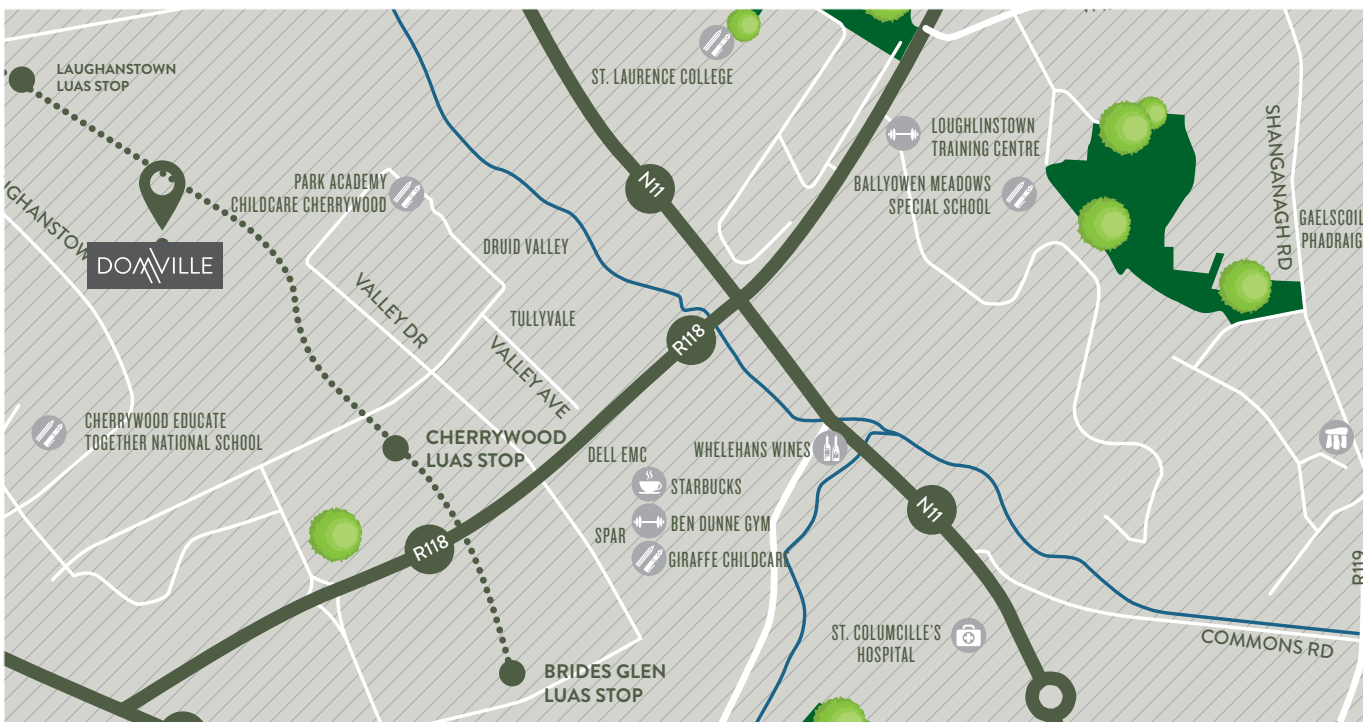
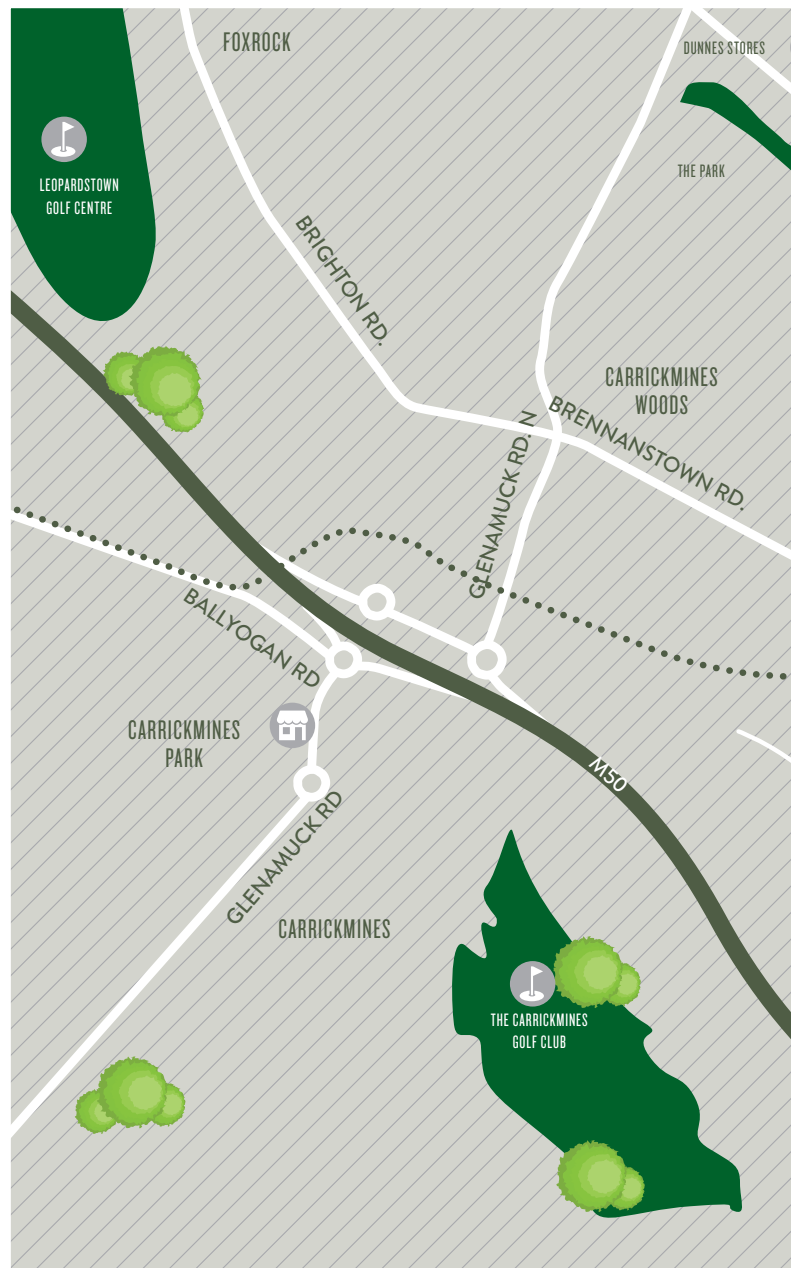
Four new schools are due to be completed and some of South Dublin's finest schools are already in close proximity, with local options including St Brigid's Girls & Boys National Schools, Cabinteely Community School, Clonkeen College and Loreto Convent.

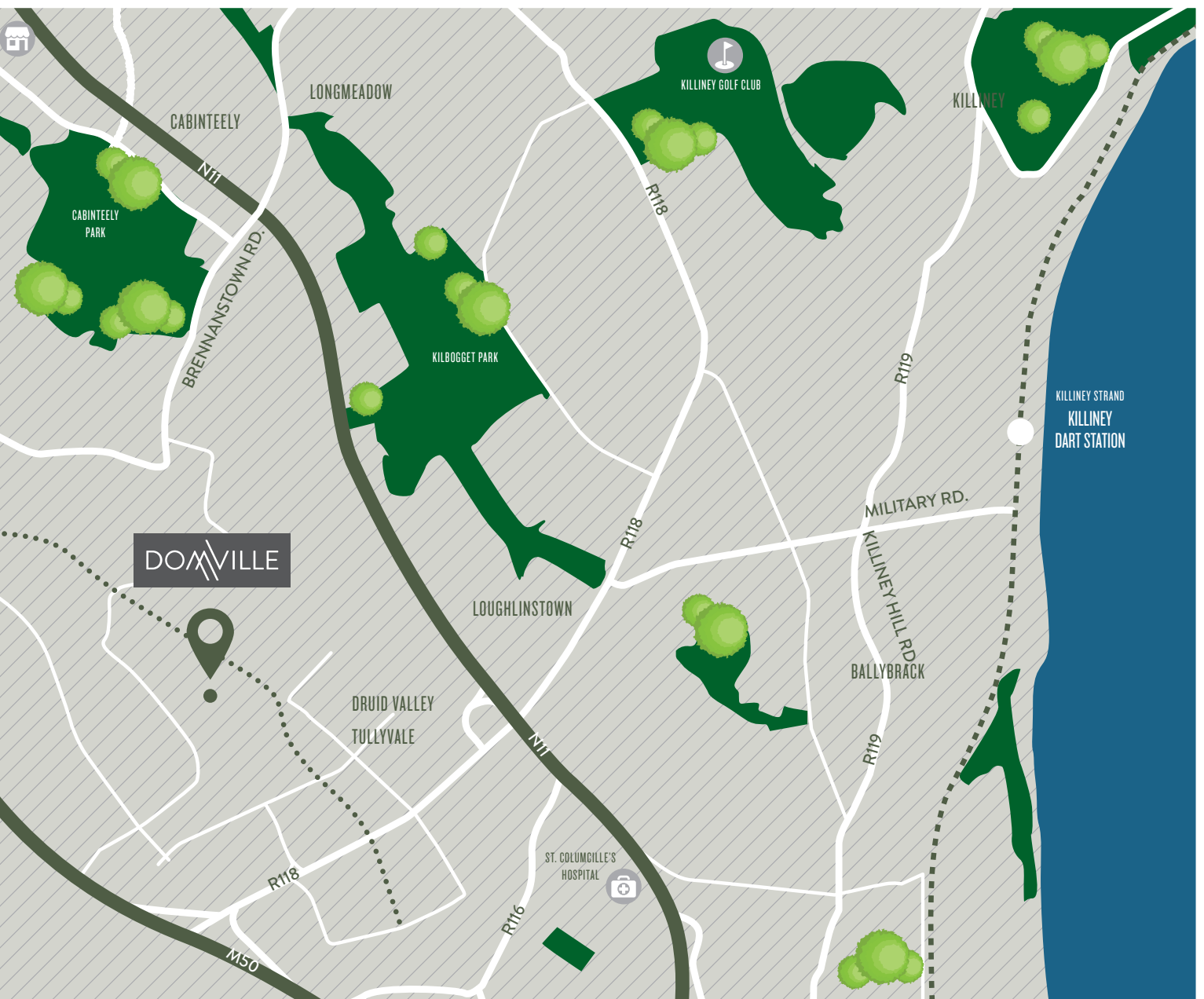
TRAVEL TIMES

FROM DOMVILLE TO...

CHERRYWOOD LUAS		05 MINS
LAUGHANSTOWN LUAS		05 MINS
CORNELSCOURT		13 MINS
BRAY		24 MINS
LOUGHLINSTOWN		08 MINS
DÚN LAOGHAIRE		15 MINS
KILLINEY		09 MINS
BLACKROCK		15 MINS
DUNDRUM		24 MINS
STEPHENS GREEN		45 MINS
DUBLIN AIRPORT		35 MINS

BY FOOT		BY CAR		BY BUS	
BY BIKE		BY LUAS			





THE FUTURE FOR DOMVILLE & CHERRYWOOD

Cherrywood will see the creation of a new town centre, commercial accommodation, parks, and sports facilities together with educational facilities. Significant residential development has already commenced within Cherrywood and by 2021, over 2,000 residential units are expected to be completed. Construction of Cherrywood Town Centre is due to be completed by 2022 and will provide a major mixed-use retail-led precinct that will include shopping, leisure, restaurant, bars, healthcare, library and other community accommodation.

Substantial infrastructure works have been completed in Cherrywood including roads, services and parks. Upon completion of Cherrywood, it is expected to be home to twenty-five thousand residents and an eighteen thousand office population. It will be a prime location of Dublin with unrivalled transport connectivity and 82 acres of parkland. As more industries come to the area, the development will continue to flourish, contributing to a wholesome and promising future for the location that is Domville, Cherrywood.

BLACKROCK

DOMVILLE
CHERRYWOOD

CHERRYWOOD

M50



SHANKILL

BRAY

SUGARLOAF





TULLY PARK



PARKS & RECREATION

Tully Park will provide exceptional amenity space for families. Tully Park, which will be 22 acres in size, the same size as St. Stephens Green, will be the flagship of Cherrywood, facilitating the whole development with cycling and walking routes. It will include a large skate area, large outdoor performance area and will have lots of winding paths and seating areas too. This park will be located beside a primary and a secondary school (Tully School) which will use this park for outdoor recreational facilities.

TULLY PARK WILL INCLUDE:

- A Biodiversity Zone with lots of native wildflowers, shrubs, trees and informal paths to wander.
- A Play Zone which includes a large play area for kids, a skate park and an amphitheatre area for open-air plays or performances.
- A Passive Zone with lawns, meadows and wooded areas make up the majority here, with winding paths and seating areas.



CHERRYWOOD

Currently, the nearby Cherrywood Business Park is a major employer in the area and has retail and leisure amenities available to the public. There are also three large communal parks being built as part of the new town centre.





DUBLIN MOUNTAIN WAY



HEALTH & WELLNESS

FOR ALL AGES CATERED FOR

The second planned park, Ticknock Park, will provide more of a formal recreational park for amenities. It will have four playing pitches for field sports, with walking routes for jogging and training. It will have connecting paths to the 'Dublin Mountain Way' hiking routes.

The third park, Beckett Park, will be a multi-use space with formal and informal recreation. Two of Cherrywood's schools will avail of this park which will be adjacent to it. It will have weather sport

pitches, tennis courts, a plaza space, a boules court, an outdoor gym, playgrounds and a multi-use games area. This park will be an active space for residents.

There are also plans to restore Lahaunstown Park which is of historic significance. An original Tower house in the 15th century, the plan for it is to make this the hub and heart of the Cherrywood community, providing a café and an artisan market.



SPECIFICATION

INTERIORS

- Wall paint colours, bathroom tiles, sanitaryware and kitchen design selected by Liz Harte Designs.
- Contemporary light grey built-in wardrobes from Brogan Jordan Kitchens & Wardrobes.
- Painted finish panel doors
- Feature architraves and 4" skirting boards on all floors.
- Stylish satin chrome finish door handles by Knobs and Knockers.

KITCHEN

- Bespoke custom designed painted kitchens by Brogan Jordan Kitchens & Wardrobes with generous storage cabinets, incorporating 30 mm quartz stone countertops, complete with 1 ½ bowl stainless steel sink and chrome taps. Blum soft close fittings used throughout.
- Freestanding island unit/ breakfast bar (where applicable), incorporating cupboard units with quartz stone countertop.
- Utility room (where applicable) worktop units with power points. Plumbed for washing machine.

BATHROOMS

- Quality sanitary ware by DPL Group – Sonas Range. Cosmos wash hand basin units, Lotus bath with bath screens in main bathroom, and shower tray with sliding door enclosures in en-suites.

TILING

- Full height wall and floor tiling to bathrooms and en-suites. Wall tiling to 1.2 m high in ground floor toilet.
- Wall mounted heated towel rails in all bathrooms and ground floor toilets.

ELECTRICAL

- Contemporary recessed LED downlights in living rooms, kitchens and bathrooms.
- Pendant lights to all hallways, landings and bedrooms
- Satin chrome light switches and power sockets throughout
- External lighting to front and rear door and terraced areas (where applicable)
- Infrastructure for Virgin Media.

HEATING & VENTILATION, HOT WATER & ENERGY EFFICIENCY

- A rated energy efficient homes
- Easy HOME®Hygro low energy demand driven mechanical extract ventilation system, quietly and efficiently extracting moist air from wet rooms, based on the humidity levels in those rooms. Fresh air introduced to habitable rooms via humidity control air inlets and terminal, balances and ensures air quality.
- Mitsubishi Ecodan air to water heat pump system with 3 zone 24/7 programmable heating controls, allowing independent time and temperature control of the living area, sleeping areas and hot water.
- Pressurised hot and cold water systems.

EXTERNAL FEATURES

- Ibstock "Bradgate" multi cream bricks to front elevations generally with white brick panels at entrances and coloured render finish on side and rear walls.
- Low maintenance PVC windows and half glazed PVC front door

EXTERIOR OF PROPERTY

- Two allocated paved car park spaces to each property
- Soft planting to front of houses
- Paved area to rear of garden with quality low maintenance dividing fences.





S I T E P L A N



SITE PLAN IS FOR ILLUSTRATIVE PURPOSES ONLY. LAYOUT MAY VARY.

HOUSE TYPES

- THE CHERRY - HOUSE TYPE 1
104 M2 APPROX
- THE TULLY - HOUSE TYPE 2
117 M2 APPROX
- THE VALE - HOUSE TYPE 3
137 M2 APPROX

- THE CARRICK - HOUSE TYPE 4
169 M2 APPROX
- THE LEHAUN - HOUSE TYPE 5
194 M2 APPROX
- THE DRUID - HOUSE TYPE 6
191 M2 APPROX
- THE GLEN - HOUSE TYPE 7
186 M2 APPROX

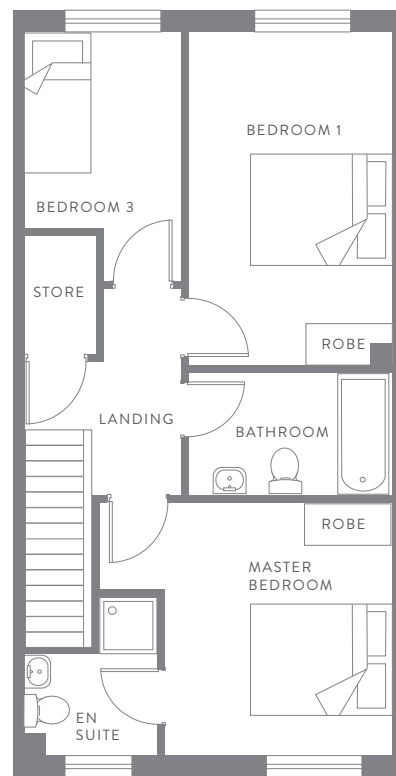
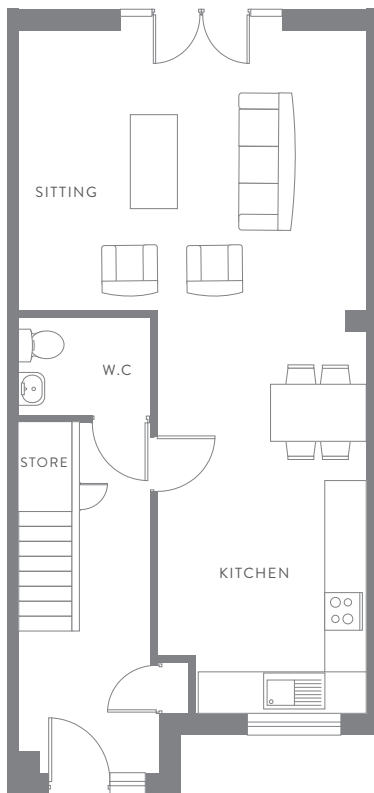


SITE PLAN IS FOR ILLUSTRATIVE PURPOSES ONLY. LAYOUT MAY VARY.

FLOOR PLANS

THE CHERRY - HOUSE TYPE 1

3 BEDROOM HOUSE APPROX 104 M2



GROUND FLOOR

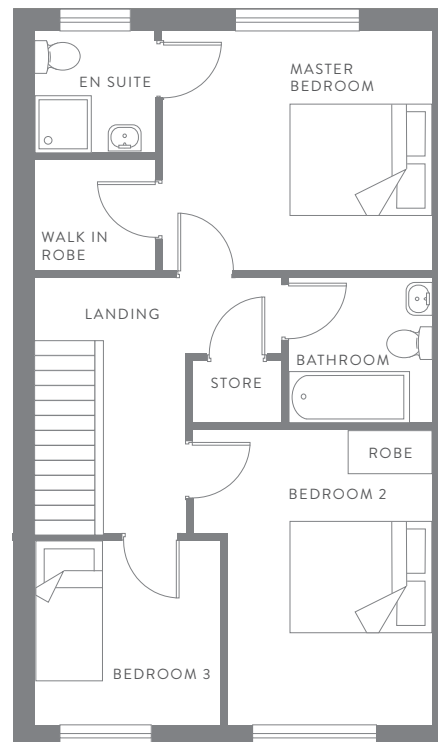
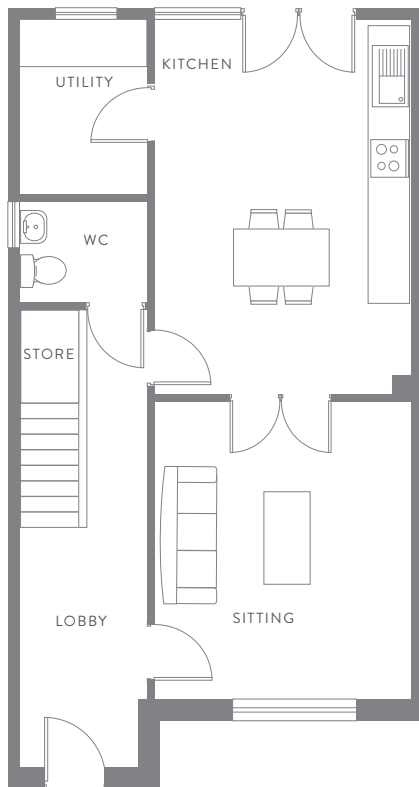
Kitchen/Dining = 5.0m x 3.1m = 16'5" x 10'2"
Sitting = 5.1m x 4.1m = 16'9" x 13'5"

FIRST FLOOR

Master Bedroom = 3.5m x 3.0m = 11'5" x 9'10"
Bedroom 2 = 4.6m x 2.8m = 15'1" x 9'2"
Bedroom 3 = 2.2m x 2.7m = 7'2" x 8'10"

FLOOR PLANS

THE TULLY - HOUSE TYPE 2 3 BEDROOM HOUSE APPROX 117 M2



GROUND FLOOR

Kitchen/Dining = 5.5m x 3.8m = 18'0" x 12'5"
Sitting = 4.5m x 3.8m = 14'9" x 12'5"

FIRST FLOOR

Master Bedroom = 3.9m x 3.5m = 12'9" x 11'5"
Bedroom 2 = 4.3m x 2.9m = 14'1" x 9'6"
Bedroom 3 = 2.7m x 2.7m = 8'10" x 8'10"



FLOOR PLANS ARE FOR ILLUSTRATIVE PURPOSES ONLY. LAYOUT MAY VARY.

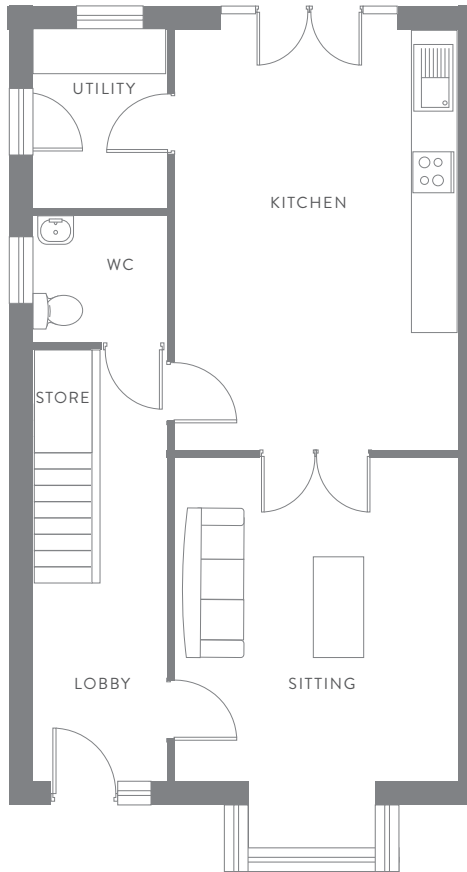


FLOOR PLANS

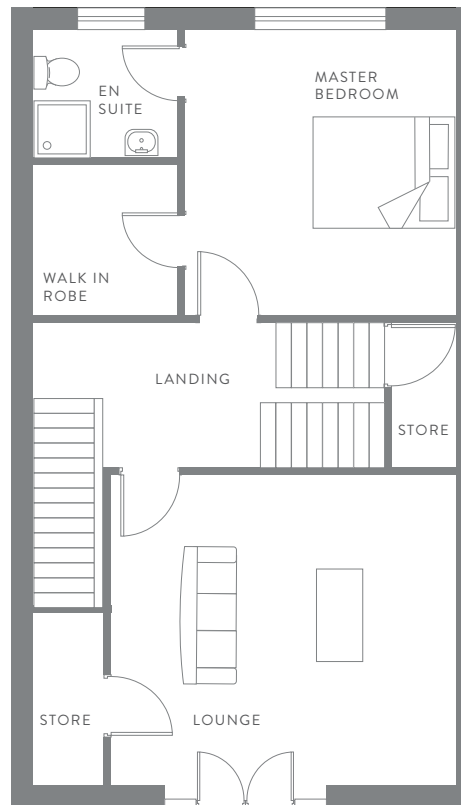
THE CARRICK - HOUSE TYPE 4 4 BEDROOM HOUSE APPROX 169 M2



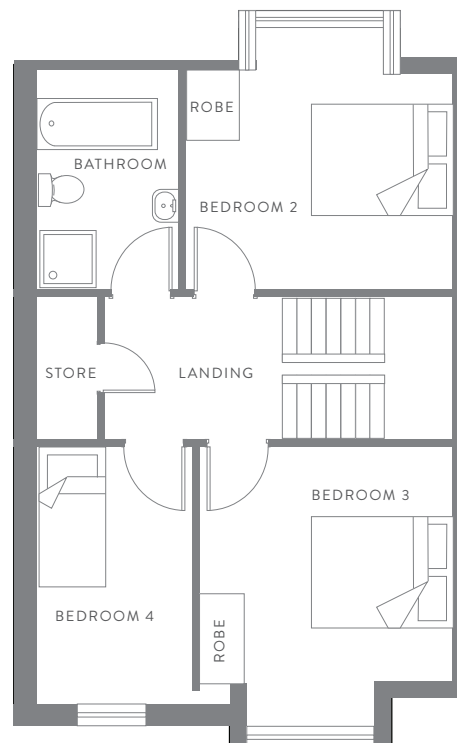
GROUND FLOOR



FIRST FLOOR



SECOND FLOOR



GROUND FLOOR

Kitchen/Dining = 5.8m x 3.9m = 19'0" x 12'9"
Sitting = 4.5m x 3.9m = 14'9" x 12'9"

FIRST FLOOR

Master Bedroom = 3.9m x 3.7m = 12'9" x 12'1"
Lounge = 4.9m x 4.2m = 16'0" x 13'9"

SECOND FLOOR

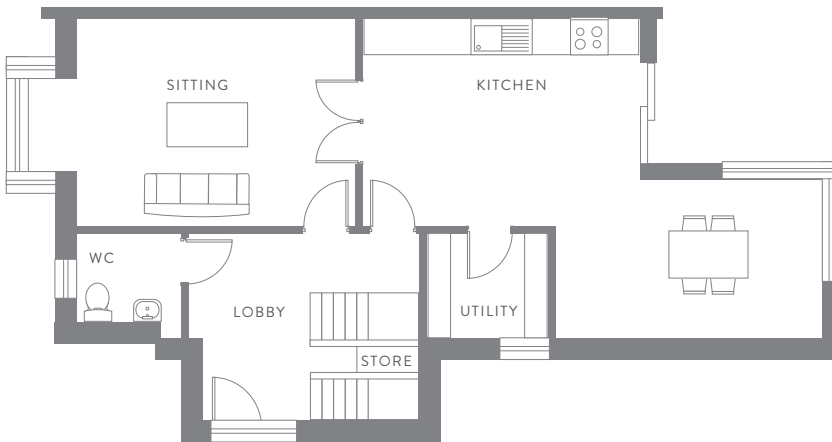
Bedroom 2 = 3.7m x 3.0m = 12'1" x 9'10"
Bedroom 3 = 3.5m x 3.3m = 11'5" x 10'10"
Bedroom 4 = 3.3m x 2.2m = 10'10" x 7'2"

FLOOR PLANS

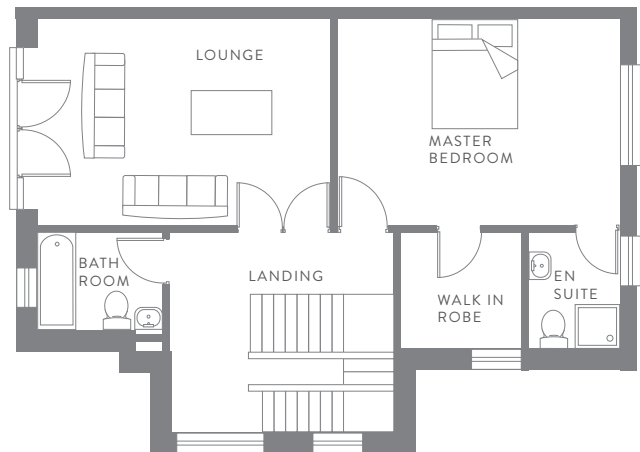
THE LEHAUN - HOUSE TYPE 5 4 BEDROOM PLUS STUDY HOUSE APPROX 194 M2



GROUND FLOOR



FIRST FLOOR



GROUND FLOOR

Sitting = 5.2m x 3.8m = 17'1" x 12'5"
Kitchen = 4.95m x 3.9m = 16'2" x 12'9"
Dining = 4.9m x 2.9m = 16'1" x 9'6"

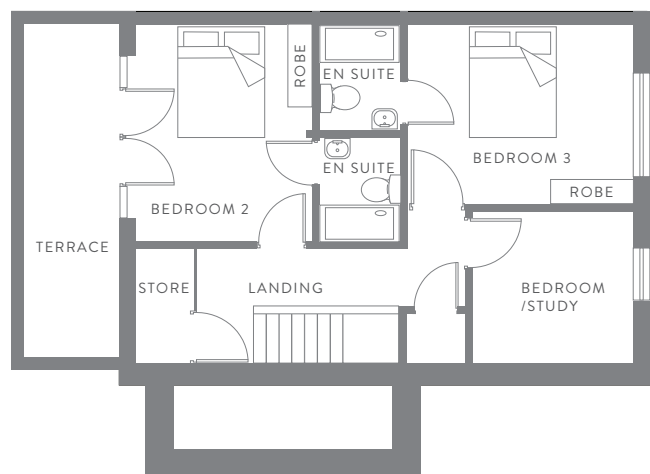
FIRST FLOOR

Lounge = 5.3m x 3.6m = 17'5" x 11'9"
Master Bedroom = 5.0m x 3.6m = 16'6" x 11'9"

SECOND FLOOR

Bedroom 2 = 3.75m x 3.15m = 12'3" x 10'4"
Bedroom 3 = 3.9m x 3.1m = 12'9" x 10'2"
Bedroom/study = 2.7m x 2.7m = 8'10" x 8'10"

SECOND FLOOR





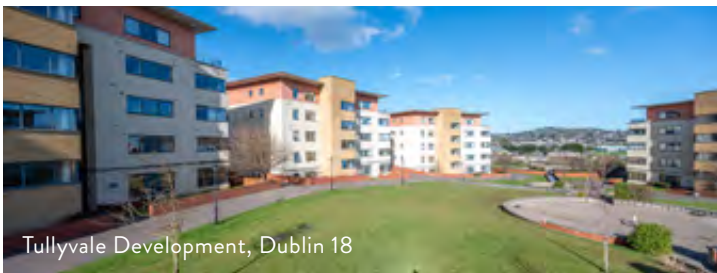




PREVIOUS DEVELOPMENTS
BY WILLIAM NEVILLE & SONS



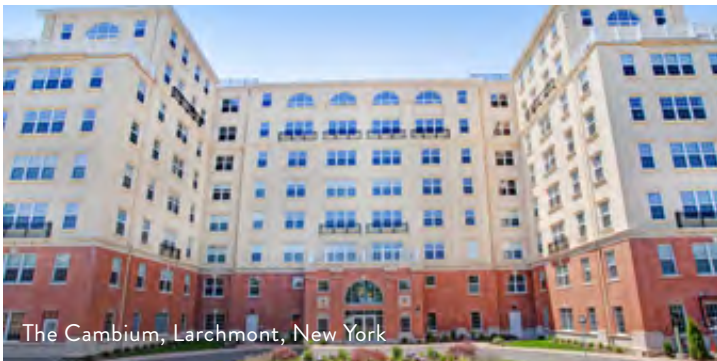
Druid Valley Development, Dublin 18



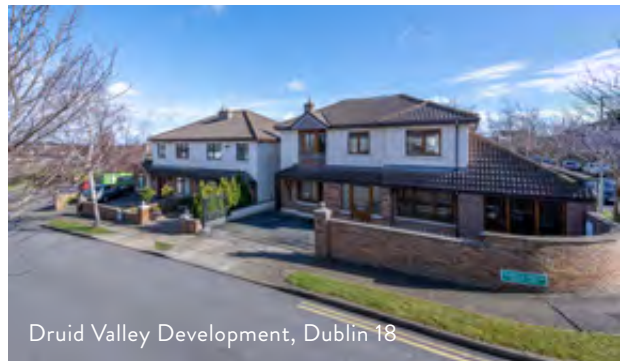
Tullyvale Development, Dublin 18



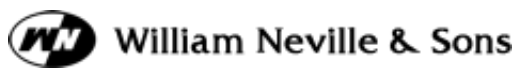
Druid Valley and Tullyvale Developments, Dublin 18



The Cambium, Larchmont, New York



Druid Valley Development, Dublin 18



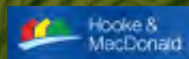
William Neville & Sons

ROCKFIELD HOUSE,
SPAWELL RD, WEXFORD

William Neville & Sons is one of Ireland's most respected and reputable companies in the Irish Construction Industry. Founded in Wexford by William Neville in the 1970's the company has gone from strength to strength successfully carrying out major developments in Ireland and the UK. Its market leader position has been gained by the quality of its workmanship and the expertise and professionalism of its team in delivering high quality residential and mixed use schemes.

PROFESSIONAL TEAM

JOINT SELLING AGENTS



Hooke & MacDonald
118 Baggot Street Lower
Dublin 2
01 631 8402
www.hmd.ie
PSRA No. 001651

JOINT SELLING AGENTS



Dillon Marshall
Unit 12
Knockmitten Business Park
Knockmitten Lane
Dublin 12
Tel: 01 496 7574
www.dmpc.ie
PSRA No. 001314

SOLICITORS

Ebrill Solicitors
Iberius House
Third Floor
Common Quay Street
Wexford
Y35 TYD0
Tel: 053 9122044
www.ebrillsolicitors.ie

ARCHITECTS

Reddy Architecture
& Urbanism
Dartry Mills
Dartry Rd
Dublin 6
Tel: 01 498 7000
reddyarchitecture.com



A RATED
HOUSES

These particulars are for guidance purposes only, do not form part of any contract and should not be relied upon as statements of fact. The Vendor, their advisors, Hooke & MacDonald and Dillon Marshall shall not be held responsible for any inaccuracies. All maps, measurements and distances stated are approximate and are provided for identification purposes only. Any reference to residential unit measurements estimate approximate Gross Internal Area (GIA), the total area measured from internal block work excluding all internal finishes, which is the commonly accepted method of measurement for residential units. Residential unit measurements have been provided to us by either the relevant architect or client and it should be noted that variation with finished residential unit measurement may occur. Intending purchasers must satisfy themselves as to the accuracy of details given verbally or in written form. No employee in Hooke & MacDonald or Dillon Marshall has the authority to make or give representations of warranty in relation to this property. Ordnance Survey Licence No. AU0009510 Ordnance Survey Ireland & Government of Ireland.