

For Sale

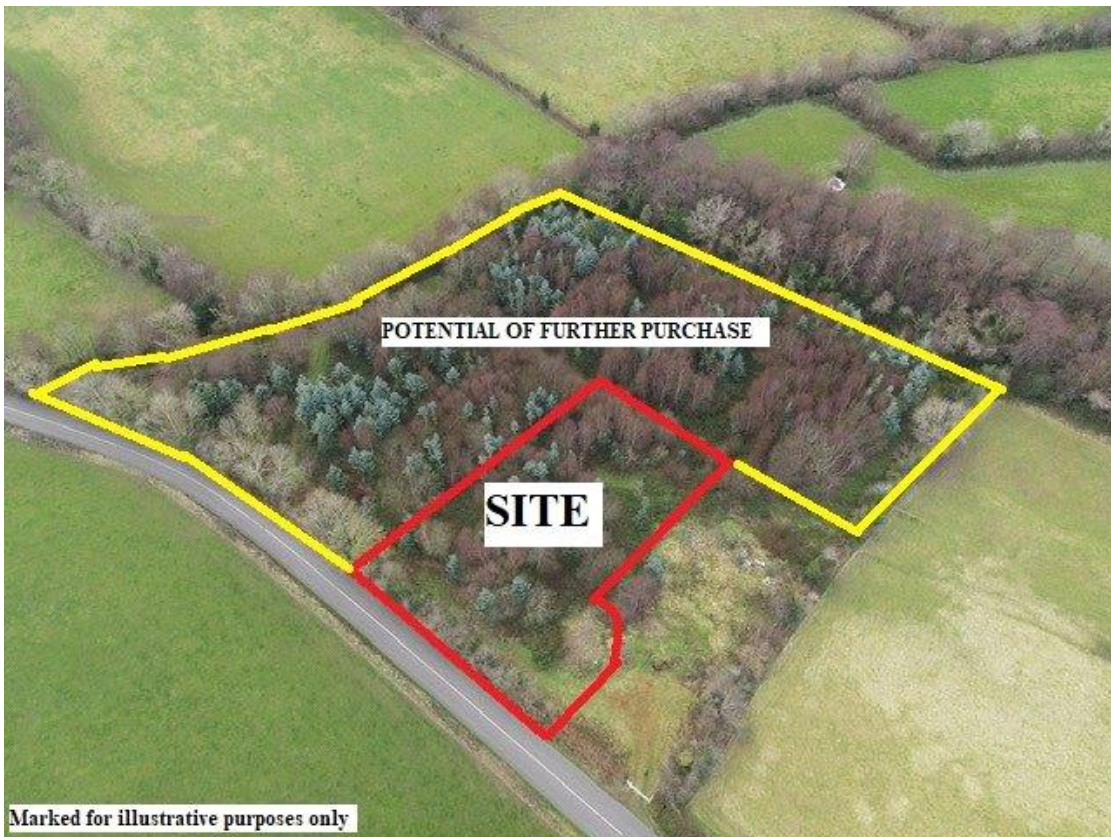
Asking Price: €70,000

**Sherry
FitzGerald**
O'Leary Kinsella



Killann, Enniscorthy,
Co. Wexford

sherryfitz.ie



Excellent located 0.79 acre site approximately being sold subject to planning permission, situated just outside Killann village with a large wooded area and lovely views of the Blackstairs mountains.

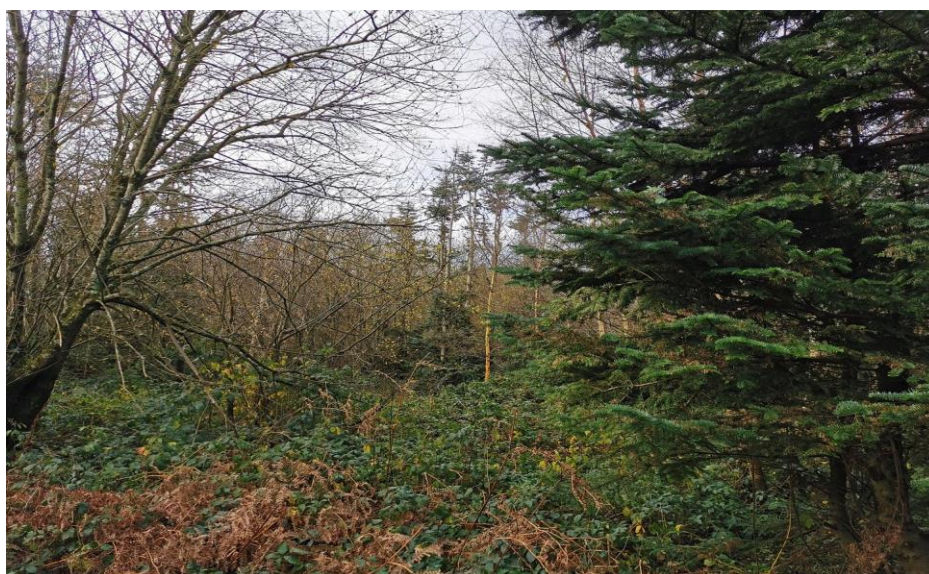
The original planning permission which has now lapsed (Planning No. 20161251) architecturally designed two storey, 4 bedroom house extends to 1,850 square ft approx. with an open plan kitchen, living and sun lounge to maximise the views into the woodland setting.

If you ever dreamed of building a house within your own woodland setting, then this is possibly the site for you.

This is a large one-acre site, with the option to purchase a further one and a half acres of woodland.

It is a mixed woodland of pines, birch and ferns just waiting to be sculpted with pathways and further plantings. There are also streams that could facilitate a large pond as part of the landscaping. It is a mixed woodland of pines, birch and ferns just waiting to be sculpted with pathways and further plantings. There are also streams that could facilitate a large pond as part of the landscaping.





Directions

From Enniscorthy, take the R702 and at roundabout for Aldi, take the left turn signposted Killann. Follow this road through Caim Village for approx. 9kms and at T junction, take a quick right then left. Follow the road for a short distance and in Killann village, turn left. Woodland on right hand side after a short distance with sign. Eircode of property near it Y21 V3F9





NEGOTIATOR

Declan O'Leary
Sherry FitzGerald O'Leary
Kinsella
11 Slaney Street, Enniscorthy, Co
Wexford
T: 053 92 37322
E: sfol@wexproperty.ie

sherryfitz.ie

CONDITIONS TO BE NOTED: A full copy of our general brochure conditions can be viewed on our website at <http://www.sherryfitz.ie/terms>, or can be requested from your local Sherry FitzGerald office. We strongly recommend that you familiarise yourself with these general conditions. While care has been taken to ensure that information contained in Sherry FitzGerald publications is correct at the time of publication, changes in circumstances after the time of publication may impact on the accuracy of this. PSRA Registration No. 001510