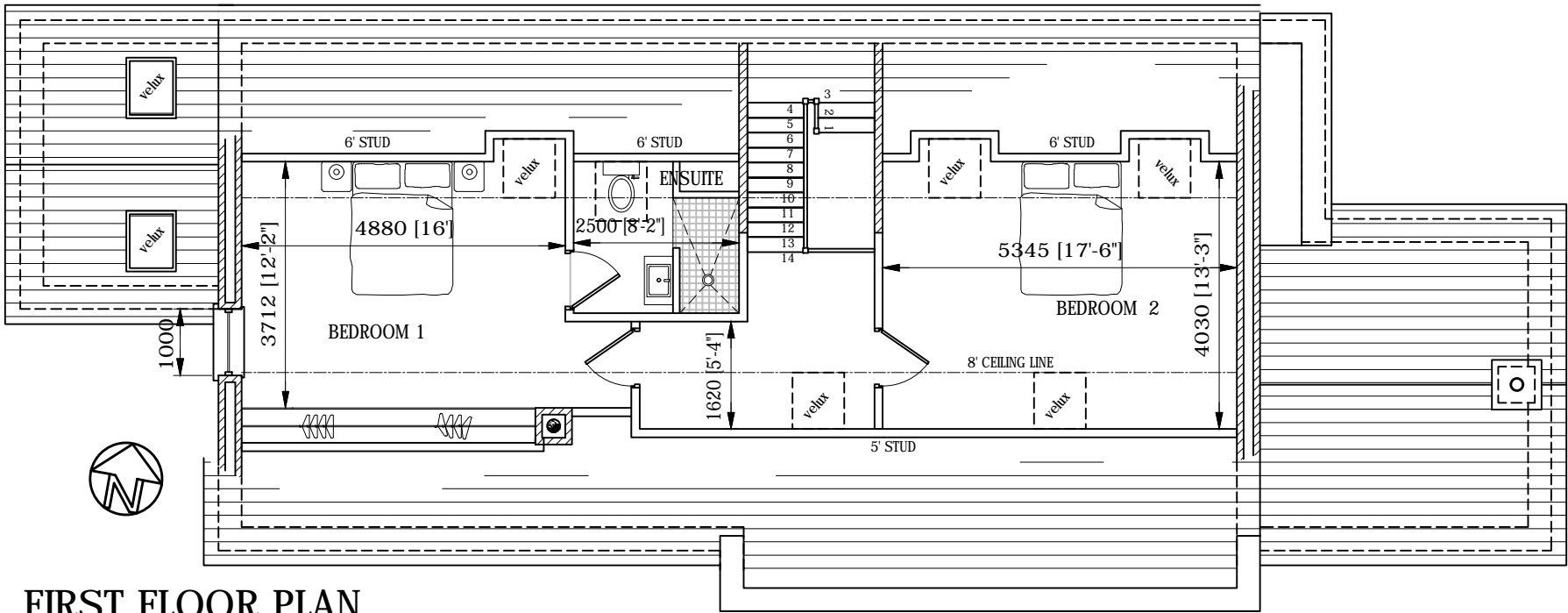
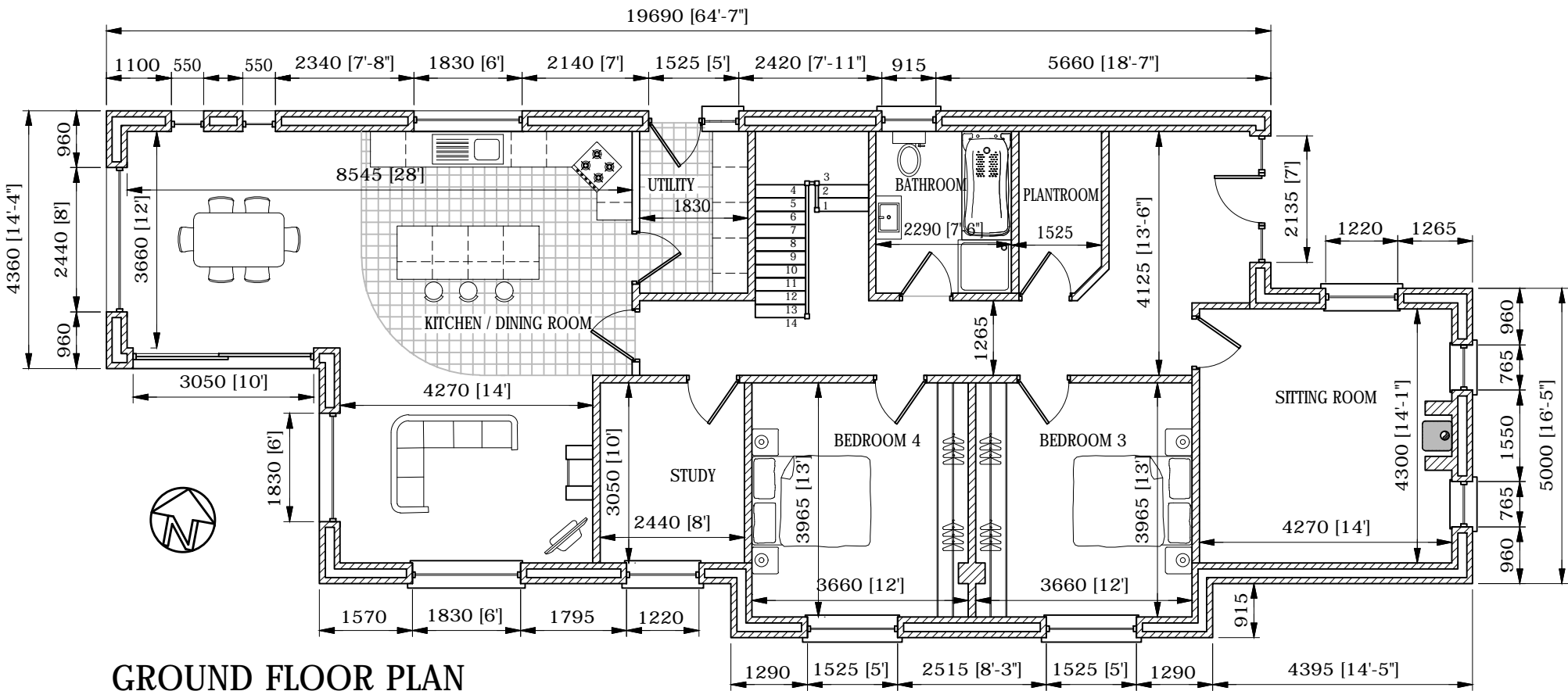


NOTE:
DRAWINGS ARE ISSUED FOR PLANNING ONLY AND REQUIRE
ENGINEERS SPECIFICATION FOR CONSTRUCTION.
ALL LEVELS AND DIMENSIONS TO BE CHECKED ON SITE.



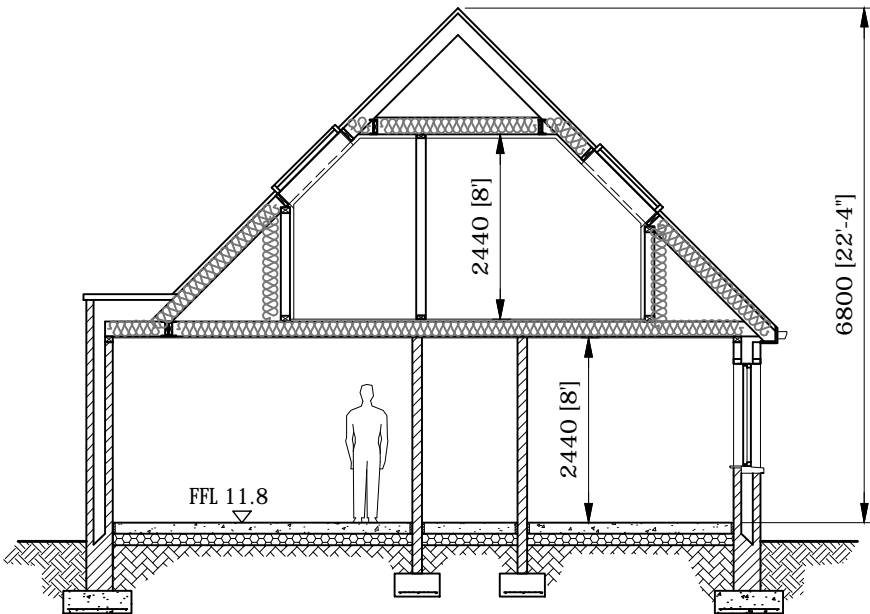
FIRST FLOOR PLAN

SCALE 1:100 (FLOOR AREA 693ft² / 64m²)



GROUND FLOOR PLAN

SCALE 1:100 (FLOOR AREA 1582ft² / 147m²)



SECTION

SCALE 1:100

BLACK SLATE ON TIMBER BATTENS
ON NON-TEARABLE BREATHABLE FELT ON
RAFTERS AT 400 CRS. ENDS OF
RAFTERS TO BE TREATED WITH
SUITABLE PRESERVATIVE.

150mm thick "Kingspan KOOLTHERM K7" INSULATION CUT AND
WEDGED BETWEEN JOISTS WITH 52.5mm KOOLTHERM K17

VENTILATION AT EAVES AND RIDGE LEVEL.

100 x 75 TREATED TIMBER
WALL PLATE STRAPPED TO
WALL AS PER BUILDING REGS.

100 BLOCK OUTER LEAF
WITH 100mm thick "Kingspan Therma TW50" INSULATION
100 BLOCK INNER LEAF

150 CONCRETE FLOOR SLAB
ON 140 mm Kingspan Kooltherm K3 INSULATION
ON Monarflex Geomembrane RADON BARRIER & SUMP

FOUNDATIONS TO BE NOMINALLY 900 WIDE
x 300 DEEP WITH T10 BARS AT 200 CRS.
EACH WAY BOTTOM.

A	ISSUED FOR PLANNING	10.19
REV.	DESCRIPTION	DATE
<div><div><div>LIAM SLATTERY</div><div>Diploma in Civil Engineering</div><div>MITCHELSTOWN, Co. Cork</div></div><div><div>Ph.: 086 3892939</div><div>email: slatteryliam@yahoo.com</div></div></div> <div><div>PROJECT:</div><div>PROPOSED DWELLING AT 13A DUNLOCHA COTTAGES, ROPE WALK, BLACKROCK, CORK For Tony & Mary Murphy</div></div> <div><div>DRG. TITLE:</div><div>FLOOR PLANS & SECTIONS</div></div>		
Date: October 2019	Scale: A3 - 1:100	Drg. No.: 410 - 03