

Spectacular waterfront home with
guest lodge and boathouse on 7 acres

Drimna Lodge and Baileys Cottage, Oysterbed Pier, Sneem, Co Kerry



Spectacular waterfront home with guest lodge and boathouse on 7 acres

Drimna Lodge and Baileys Cottage, Oysterbed Pier, Sneem, Co Kerry



Spectacular waterfront home with guest lodge and boathouse on 7 acres

Drimna Lodge and Baileys Cottage, Oysterbed Pier, Sneem, Co Kerry



About this property

Drimna Lodge and Baileys Cottage sit in a fabulous waterside location on the Ring of Kerry, on The Atlantic Way. You cannot live much closer to the sea than at Drimna Lodge. The design is such that you can see the water from every room of the house. Both properties have separate access from a private road and occupy an entire site of c.7 acres with views of the Macgillycuddy Reeks and direct access to the sea at Oysterbed Pier.

The main property, Drimna Lodge was constructed by a Dutch couple in 2022 and architecturally designed by Dusoswa from DOD architects, designed to take full advantage of the spectacular views from every angle of Drimna Lodge and the peaceful outer waters of Kenmare Bay.

Arriving at the property through the gated entrance from the private driveway, you already experience the closeness to the sea. Immediately on entering the open plan living area, the property opens up to the amazing view. The design of the home ensures water views from each of the living rooms, kitchen and dining area, and from the bedrooms while the roof terrace off the upper living room is a wonderful vantage point.



Spectacular waterfront home with guest lodge and boathouse on 7 acres

Drimna Lodge and Baileys Cottage, Oysterbed Pier, Sneem, Co Kerry



Property Details

Drimna Lodge

The main property sits within a stones throw of the water front overlooking the Magillacuddy Reeks. A beautiful gated entrance and driveway leads to the front door and once you step through the hallway in to the kitchen/dining room, you are greeted by light filled rooms all overlooking the sea. Step up to the large library/lounge with balcony off or down to a bow windowed sitting room with garden access. Upstairs there are two large ensuite bedrooms while bedroom 3 and main bathroom are at level one.

Outside there is a stone build detached garage and a pathway leading to the guest lodge and to the private slipway.

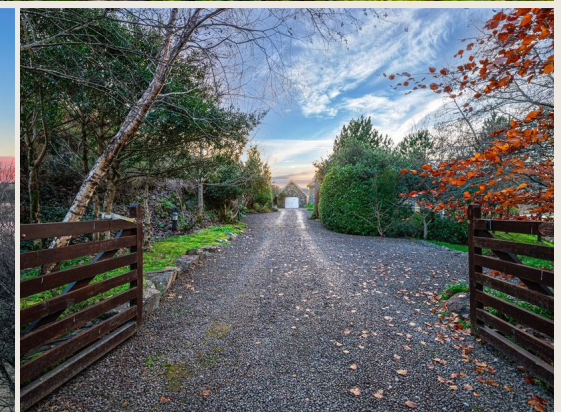
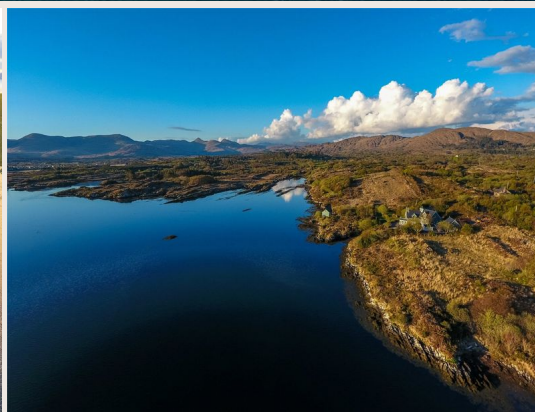
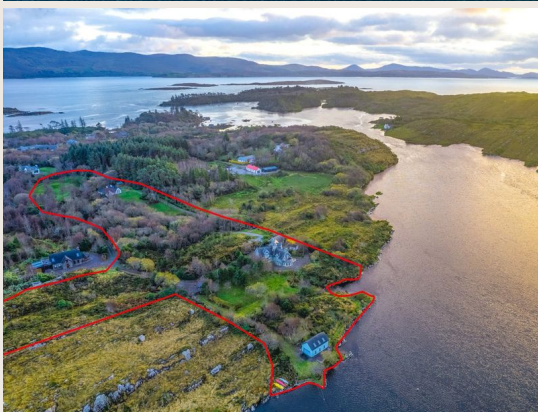
Baileys Cottage, built as a retreat house, is so much more than a guest cottage, being a self sufficient recently redecorated two bedroomed home with large garden surround and its own driveway access.

A short distance from both houses a boathouse sits at the waters edge which also benefits from attic storage with a sheltered area for anchorage offshore.



Spectacular waterfront home with guest lodge and boathouse on 7 acres

Drimna Lodge and Baileys Cottage, Oysterbed Pier, Sneem, Co Kerry

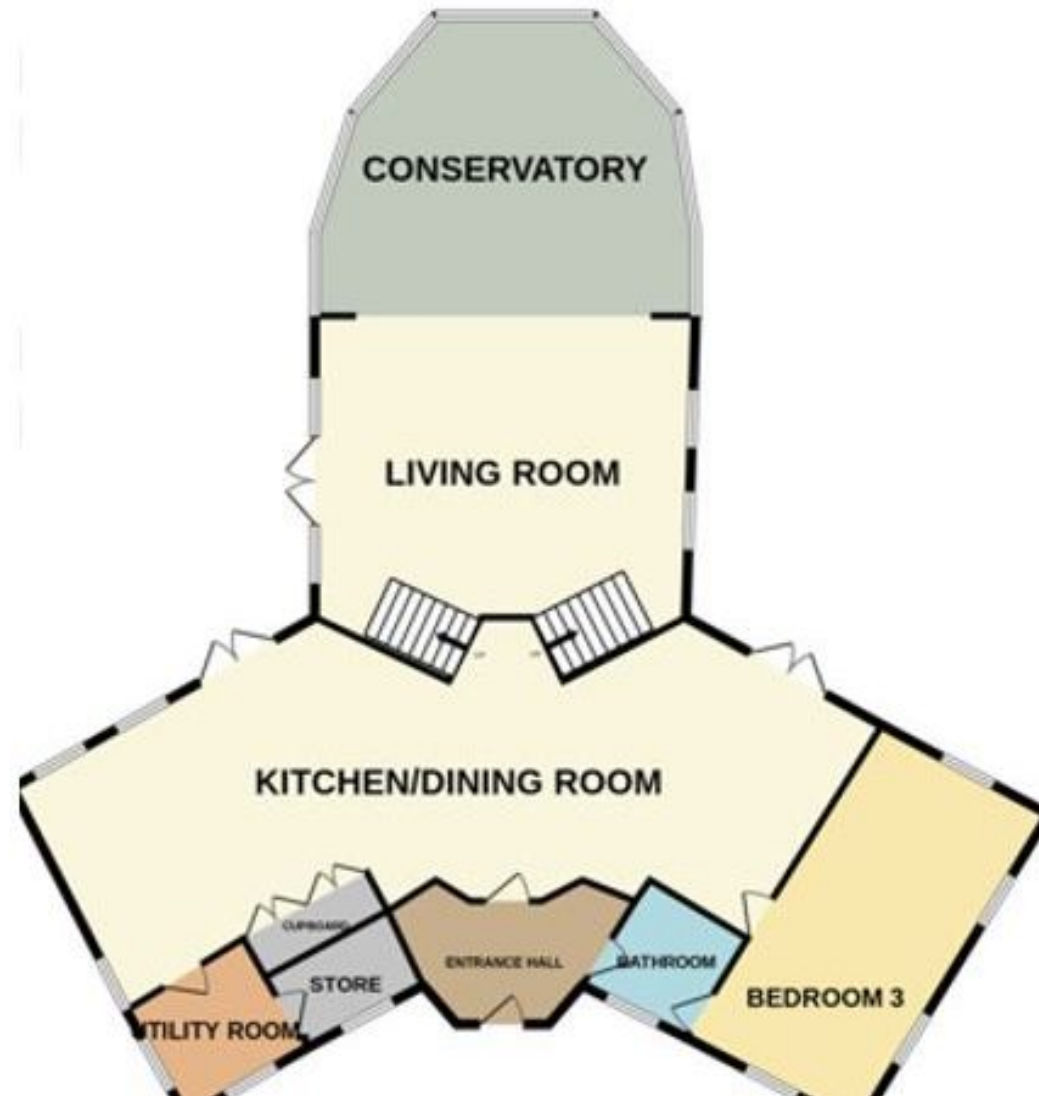


Spectacular waterfront home with guest lodge and boathouse on 7 acres

Drimna Lodge and Baileys Cottage, Oysterbed Pier, Sneem, Co Kerry



Plans



Spectacular waterfront home with guest lodge and boathouse on 7 acres

Drimna Lodge and Baileys Cottage, Oysterbed Pier, Sneem, Co Kerry



Local Area

The area around Oysterbed Pier in Sneem is known for its stunning natural beauty and picturesque landscapes. Sneem is nestled on the Ring of Kerry and is popular for exploring the Wild Atlantic Way. The surroundings of Oysterbed Pier offer breathtaking views of the rugged coastline, lush green hills, and crystal-clear waters of Kenmare Bay. You can enjoy leisurely walks along the pier, take in the fresh sea air, and admire the local wildlife and marine life.



Spectacular waterfront home with guest lodge and boathouse on 7 acres

Drimna Lodge and Baileys Cottage, Oysterbed Pier, Sneem, Co Kerry



Property Details

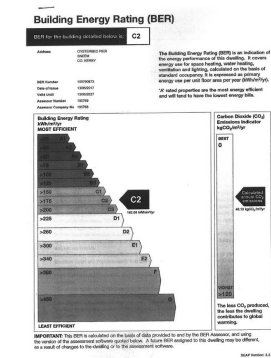
Key Features

- Drimna Lodge 244 sq m (2626 sq ft)
- Aluminium clad triple glazed windows
- Siematic kitchen
- Wood and stone interiors
- Storm Screen Insulation
- Glass landings to allow light flow
- Baileys Cottage 106 sq m (1173 sq ft)
- Boathouse 72 sq m (770 sq ft)
(plumbed and wired)
- Professionally landscaped gardens
with freshwater ponds and meditation
spaces

Services & Additional Information

BER

BER Rating = C2



Spectacular waterfront home with guest lodge and boathouse on 7 acres

Drimna Lodge and Baileys Cottage, Oysterbed Pier, Sneem, Co Kerry



Enquire



Catherine McAuliffe

Savills Cork

+353 (0) 87 823 0451

catherine.mcauliffe@savills.ie

More Information



[View on website](#)



[View Digital Brochure](#)



[Property Search](#)

Viewing strictly by appointment

Property Ref: CKK230324



Important Notice: Savills, its clients and any joint agents give notice that 1: They are not authorised to make or give any representations or warranties in relation to the property either here or elsewhere, either on their own behalf or on behalf of their client or otherwise. They assume no responsibility for any statement that may be made in these particulars. These particulars do not form part of any offer or contract and must not be relied upon as statements or representations of fact. 2: Any areas, measurements or distances are approximate. The text, photographs and plans are for guidance only and are not necessarily comprehensive. It should not be assumed that the property has all necessary planning, building regulation or other consents and Savills have not tested any services, equipment or facilities. Purchasers must satisfy themselves by inspection or otherwise. *powered by* **FluxPro**