

A 2-bedroom apartment situated in a prime location in Grand Canal Dock

Barrow Street, Grand Canal Dock, Dublin 4, D04 WV80

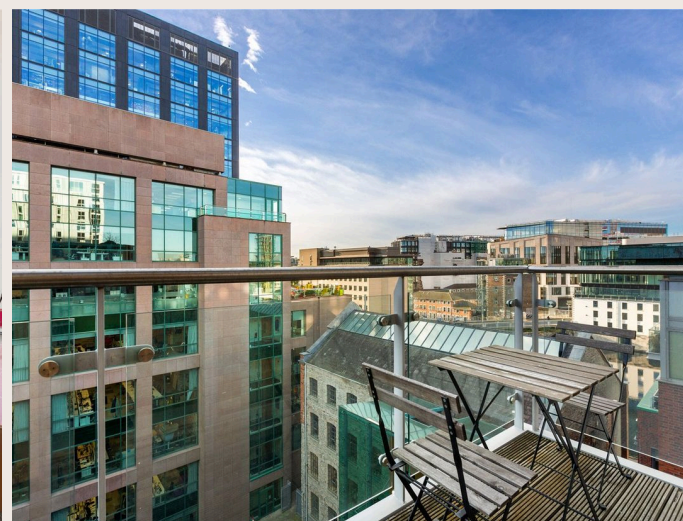
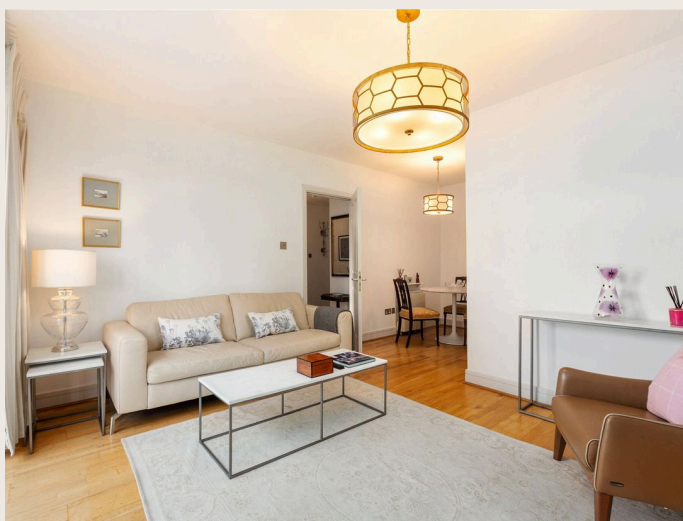
savills





# A 2-bedroom apartment situated in a prime location in Grand Canal Dock

Barrow Street, Grand Canal Dock, Dublin 4, D04 WV80



# A 2-bedroom apartment situated in a prime location in Grand Canal Dock

Barrow Street, Grand Canal Dock, Dublin 4, D04 WV80



## About this property

81 The Dock Mill is an exquisite two-bedroom apartment situated on the seventh (top) floor of The Dock Mill. This is a superb development located in Grand Canal Dock, close by to the Dart station and Google HQ, and offers secure underground parking, landscaped gardens and a communal roof terrace.

The Dock Mill apartment offers a blend of convenience and elegance, starting with its main entrance off Barrow Street. Accessed through a secure main door and a picturesque internal courtyard, the building features modern amenities, including lift access for effortless convenience.

Situated on the seventh floor, the apartment welcomes you with a bright and spacious entrance hall that seamlessly flows into a stunning open-plan living and dining area. This thoughtfully designed space provides the perfect setting for relaxation, entertaining, and modern living. Accessed off the living room is a south-facing balcony which overlooks the courtyard.

The kitchen is located off the living space and includes fully built in units

and integrated appliances. There are two bedrooms, both with fitted wardrobes, and a bathroom located off the hallway.

This apartment is situated beside a communal roof terrace which offers wonderful panoramic views across the city.

In all the accommodation extends to approximately 62.5 sq m/673 sq ft. A full layout of the accommodation is shown on the adjoining floorplans.

A secure underground car parking space is included.



# A 2-bedroom apartment situated in a prime location in Grand Canal Dock

Barrow Street, Grand Canal Dock, Dublin 4, D04 WV80



A 2-bedroom apartment situated in a prime location in Grand Canal Dock

Barrow Street, Grand Canal Dock, Dublin 4, D04 WV80

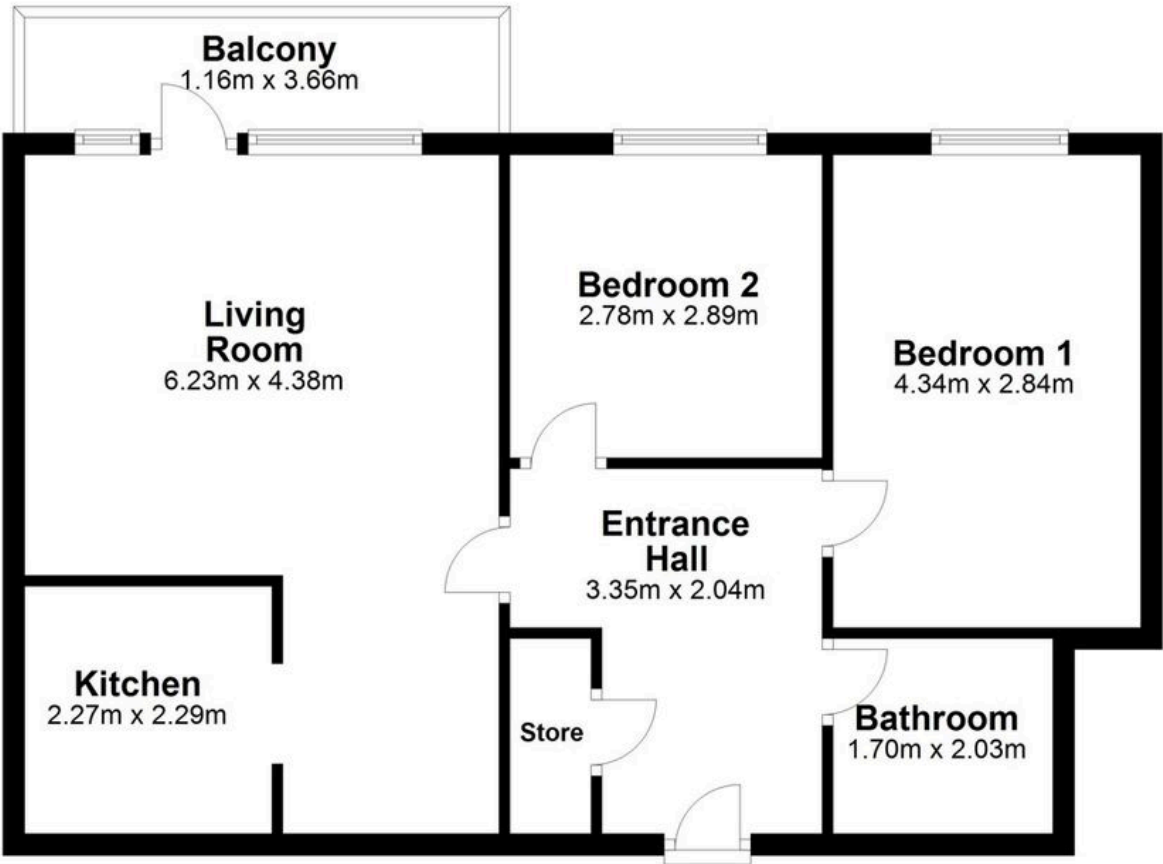


Plans



673 sq ft

Floor Plan



Total area: approx. 62.5 sq. metres  
81 Dock Mill, Grand Mill Quay, Dublin 4



A 2-bedroom apartment situated in a prime location in Grand Canal Dock

Barrow Street, Grand Canal Dock, Dublin 4, D04 WV80

savills



## Local Area

Located on Barrow Street, The Dock Mill is situated in a prime area in Grand Canal Dock neighbourhood. Known for its waterfront views, modern architecture and thriving community, this location offers a fantastic urban living experience.

Barrow Street is well-served by various public transport options including beside the DART at Grand Canal Dock and numerous bus routes which service the Docklands.



# A 2-bedroom apartment situated in a prime location in Grand Canal Dock

Barrow Street, Grand Canal Dock, Dublin 4, D04 WV80



## Property Details

### Key Features

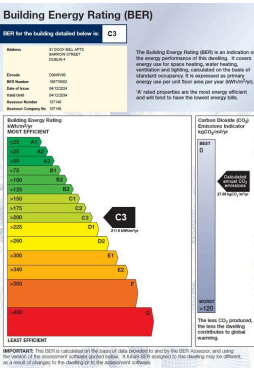
- 7th floor apartment
- South-facing balcony offering views across Grand Canal Dock
- Underground car parking space
- Beside Google HQ and the DART station
- Excellent City Centre location

### Services & Additional Information

GFCH

### BER

BER Rating = N/A





# A 2-bedroom apartment situated in a prime location in Grand Canal Dock

Barrow Street, Grand Canal Dock, Dublin 4, D04 WV80



## Enquire



**Liam McCarthy**  
Dublin  
+353 83 878 4989  
liam.mccarthy@savills.ie

## More Information



View on website



View Digital Brochure



Property Search

### Viewing strictly by appointment

Property Ref: DUY240227

### Residential & Country

33 Molesworth Street, D02 CP04  
+353 (0) 1 618 1300



Important Notice: Savills, its clients and any joint agents give notice that 1: They are not authorised to make or give any representations or warranties in relation to the property either here or elsewhere, either on their own behalf or on behalf of their client or otherwise. They assume no responsibility for any statement that may be made in these particulars. These particulars do not form part of any offer or contract and must not be relied upon as statements or representations of fact. 2: Any areas, measurements or distances are approximate. The text, photographs and plans are for guidance only and are not necessarily comprehensive. It should not be assumed that the property has all necessary planning, building regulation or other consents and Savills have not tested any services, equipment or facilities. Purchasers must satisfy themselves by inspection or otherwise. *powered by* **FluoPro**