

# House Type C

3 BED SEMI-DETACHED

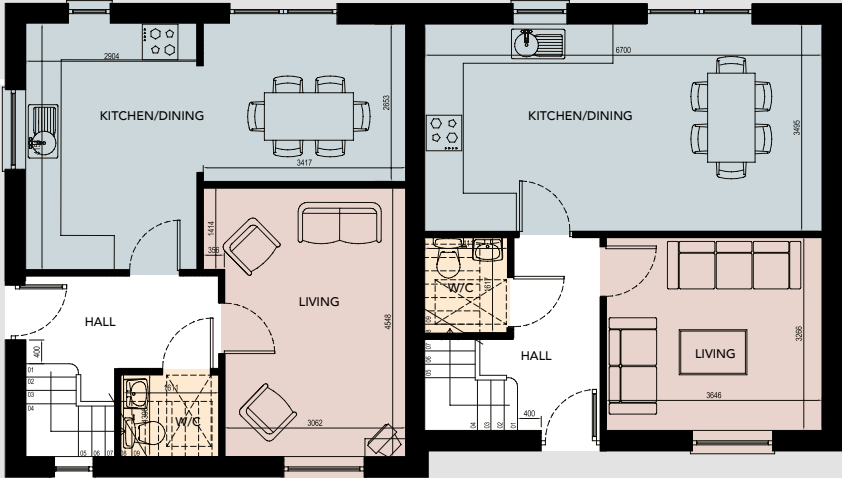
90.13sq.m (970.15sq.ft)



INCREASED CEILING HEIGHTS  
CREATE ROOMS THAT FEEL  
OPEN AND INVITING

## GROUND FLOOR PLAN

Entrance Hall	7.40sq.m (79.66sq.ft)
Kitchen	12.07sq.m (129.89sq.ft)
Dining	9.07sq.m (97.61sq.ft)
WC	2.25sq.m (24.21sq.ft)
Living Room	14.43sq.m (155.28sq.ft)

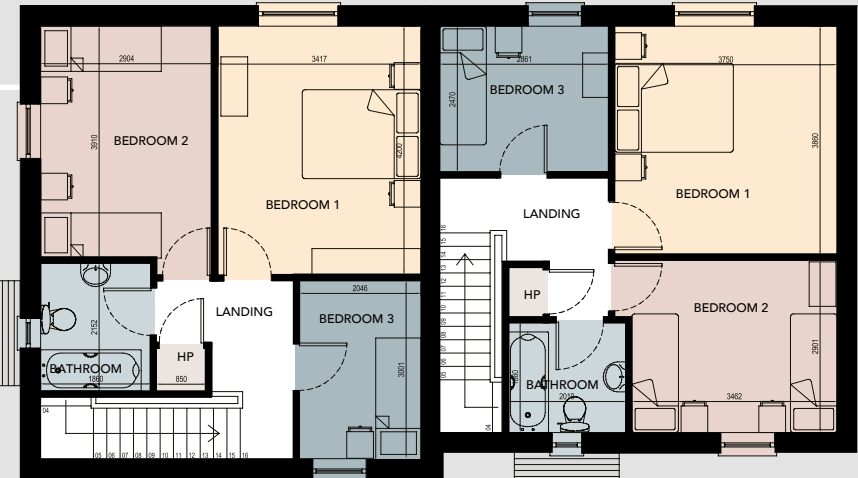


TYPE C

TYPE C1

## FIRST FLOOR PLAN

Bedroom 1	14.35sq.m (154.50sq.ft)
Bedroom 2	11.63sq.m (125.18sq.ft)
Bedroom 3	6.14sq.m (66.09sq.ft)
Bathroom	4.00sq.m (43.06sq.ft)
Landing incl Stairs	8.18sq.m (88.07sq.ft)
Hot Press	0.61sq.m (6.61sq.ft)



TYPE C

TYPE C1

