



OLDWOOD

ROSCOMMON TOWN

An executive development of
luxurious two and three bedroom homes
in the heart of Ireland

REIMAS
DEVELOPMENTS LTD

WELCOME TO OLDWOOD

On the edge of Roscommon Town, Oldwood is an executive development in stunning surroundings.

From here, you're just a short walk from the town centre's numerous amenities – or the peace and quiet of the nearby Mote Park forest. You can keep up with a busy lifestyle or find the perfect place to get some respite from it.

But that is just one part of what makes the development so special.

WHERE ELEGANCE MEETS EFFICIENCY

While Oldwood's location is important, what really sets it apart is the attention to detail throughout every facet of its design and build.

Every one of our homes includes the stylish details that put a property in a class of its own, from a welcoming log burner to a sleek and stylish fitted kitchen.

What's more, considered design pays dividends in other ways. As one of the first developments to achieve A-rated energy efficient in every home, Oldwood creates energy savings of as much as 60% a year.

There's a lot to love. We invite you to step inside and see for yourself.







*Tranquil surroundings
with an unrivalled choice
of amenities. At Oldwood,
there's something for
every lifestyle.*

A PLACE TO BUILD A LIFE

Building a house is just the start. A new development only really comes to life when you start living there.

At Oldwood, that life combines modern connections with charming surroundings. You'll be moments from Roscommon Town, with shops, restaurants, a train station and excellent schools. In addition, it's just a convenient commute to the towns of Athlone, Longford and beyond.

It's a highly desirable location for its practicality and peacefulness alike. A space to call home as you look out across Mote Park's lush forests or walk into town to shop, dine, and unwind.

FROM SPORT TO WIDE OPEN SPACE

For the active and the adventurous, Oldwood is ideal. You can venture out on a woodland walk through Mote Park, exploring its aged stone gateways and secluded gardens. Or visit the landmark Roscommon Golf Club, with 18 holes to test your skills on all terrains.

What's more, just a little further away, you'll find the River Shannon – Ireland's longest river with Portrun and Hodson Bay as warm, welcoming days out.

It's a unique lifestyle that can only come from a unique development like Oldwood.



EXCLUSIVELY DESIGNED FOR MODERN LIVING

It's the detail that makes an Oldwood home so special. From A-rated energy efficiency to en-suite showers, you'll find a level of finish that can't fail to impress.

STYLE & DESIGN

- A luxurious, stylish finish throughout
- Sleek fitted kitchen with oven, hob, and extractor fan
- Elegant bathroom with tiled floors and half wall tiling

SECURITY & COMFORT

- Highly efficient Panasonic Heat Source Pump Air to Water heating and central heating
- A-rated energy efficiency

EXTERNAL

- Tarmac driveway
- Fenced rear garden with spacious patio area
- Triple-glazed UPVC windows
- 10 Year Homebond Guarantee

INTERNAL

- Master bedrooms feature an en-suite shower room
- A warming log burner for the lounge area





*However you live your life,
Oldwood is the perfect place to do
it; relax in the high specification
interiors, enjoy the abundance of
local green spaces or access one
of the vibrant nearby towns, the
choice is yours.*

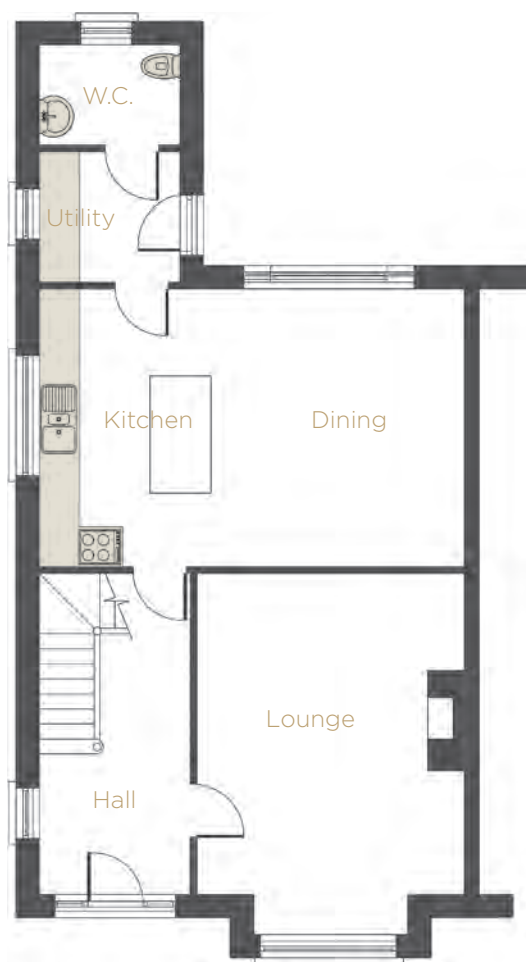


3 BEDROOM EXECUTIVE HOUSES

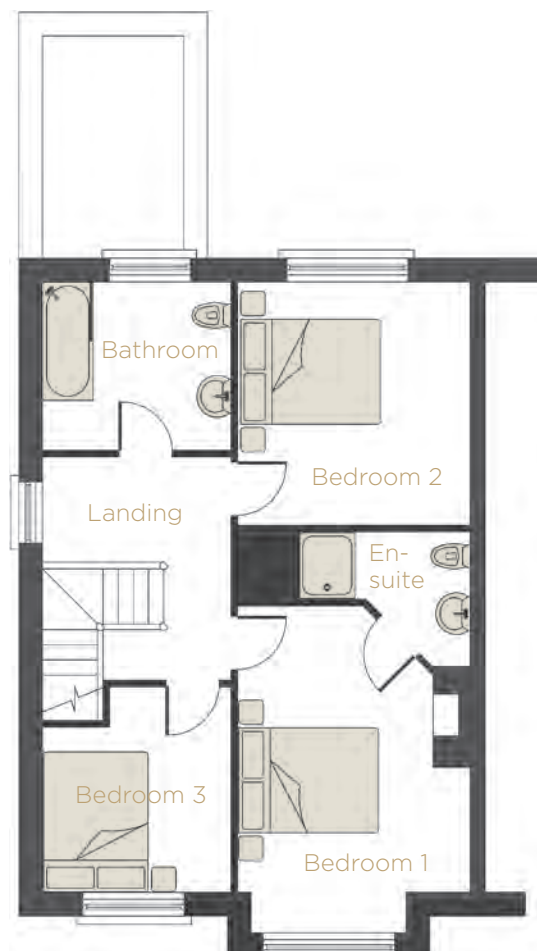


Computer generated image indicative only.

GROUND FLOOR



TOP FLOOR



GROUND FLOOR

Kitchen/Dining	6.4m	x	4.1m
	20' 9"	x	13' 6"
Lounge	5.3m	x	4m
	17' 3"	x	13' 0"
Hall	4.7m	x	2.2m
	15' 4"	x	7' 0"
Utility	2.1m	x	19.5m
	7' 0"	x	6' 4"

FIRST FLOOR

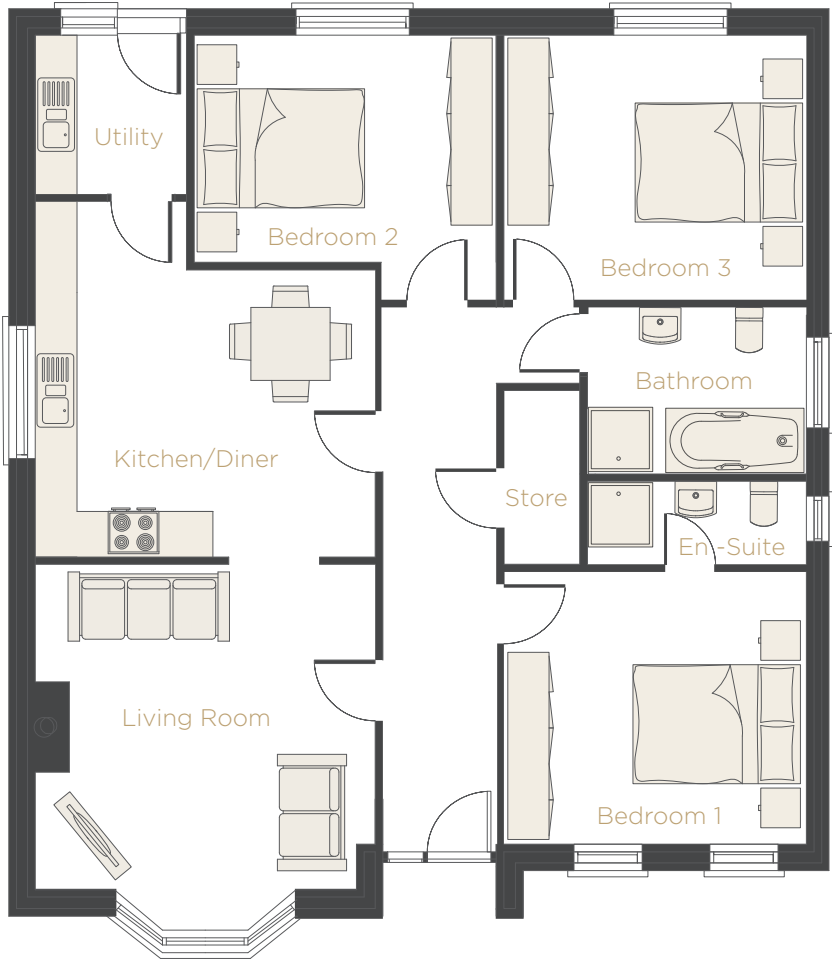
Bedroom 1	4.3m	x	3.5m
	14' 0"	x	11' 4"
En-suite	2.5m	x	1.5m
	8' 0"	x	5' 0"
Bedroom 2	3.6m	x	3.5m
	12' 0"	x	11' 4"
Bedroom 3	3.1m	x	2.8m
	10' 0"	x	9' 4"
Bathroom	2.8m	x	2.5m
	9' 4"	x	8' 4"
Landing	3.2m	x	2.8m
	10' 8"	x	9' 4"

3 BEDROOM BUNGALOWS



Computer generated image indicative only.

GROUND FLOOR



GROUND FLOOR

Kitchen/Diner	4.7m	x	4.5m
	15' 5"	x	14' 9"
Living Room	4.5m	x	4.3m
	14' 9"	x	14' 1"
Hall	7.1m	x	1.5m
	23' 4"	x	4' 11"
Bedroom 1	4m	x	3.6m
	13' 2"	x	11' 10"
En-suite	3m	x	1.2m
	9' 10"	x	3' 11"
Bedroom 2	4m	x	3m
	13' 2"	x	9' 10"
Bedroom 3	4m	x	3.5m
	13' 2"	x	11' 6"
Bathroom	3m	x	2.1m
	9' 10"	x	6' 10"



OLDWOOD

ROSCOMMON TOWN



THE LOCATION

Oldwood is just moments from Roscommon Town, with essential amenities as well as excellent road and rail links to Athlone, Longford, and Galway.

Meanwhile, the wider Roscommon County combines the services of busy towns with the tranquillity of open green space – the perfect place for family life.

HOW TO FIND US

BY CAR: From Roscommon town, take the Athlone road (N61). Pass Roscommon County Hospital on the right hand side. Follow signage for the Oldwood development which is located on the right hand side after the hospital.

BY RAIL: Roscommon is serviced by the Dublin to Westport/Ballina line and the railway station is only a c. 10 minute walk from the centre of town.



SALES AGENT

Property Partners Earley
Stone Court, The Square, Roscommon

Telephone: 090 662 6579 / 090 662 6796
Email: jeareley@propertypartners.ie

REIMAS
DEVELOPMENTS LTD

These particulars do not constitute any part of an offer or contract. None of the statements contained in these particulars are to be relied on as statements or representations of fact and intending purchasers must satisfy themselves by inspection or otherwise as to the correctness of each of the statements contained in these particulars. Configurations of kitchens, bathrooms and wardrobes etc. may be subject to alteration from those illustrated without prior notification. Purchasers should satisfy themselves as to the current specification at the time of booking. The Vendor does not make or give, and neither the selling agent, nor any person in their employment, has any authority to make or give any representation or warranty whatever in relation to any property. Computer generated imagery and photographs are for illustration only. Plans are not to scale and all dimensions shown are appropriate.