



New Homes at Terryglass Co. Tipperary


LAKE SHORE
— AVENUE —

**Sherry
FitzGerald**
Talbot

New Homes at Terryglass, Co. Tipperary.



Newly constructed A energy rated contemporary style homes pleasantly situated on the periphery of Terryglass (tidy towns award winning village) within easy strolling distance of all amenities and the deep water harbour.

They enjoy complete privacy and seclusion yet are situated within 500 metres of the shop, school, pub/ restaurants.

Hugely popular lakeside village with both holiday makers and owner occupiers.



Features

- High specification family homes.
- Certified timber framed boasting an A1 energy rating.
- Three house type to choose from - floor area
150 sq. m. – 180 sq. m. (G.I.A)
- Potential for attic conversion (at an additional cost).

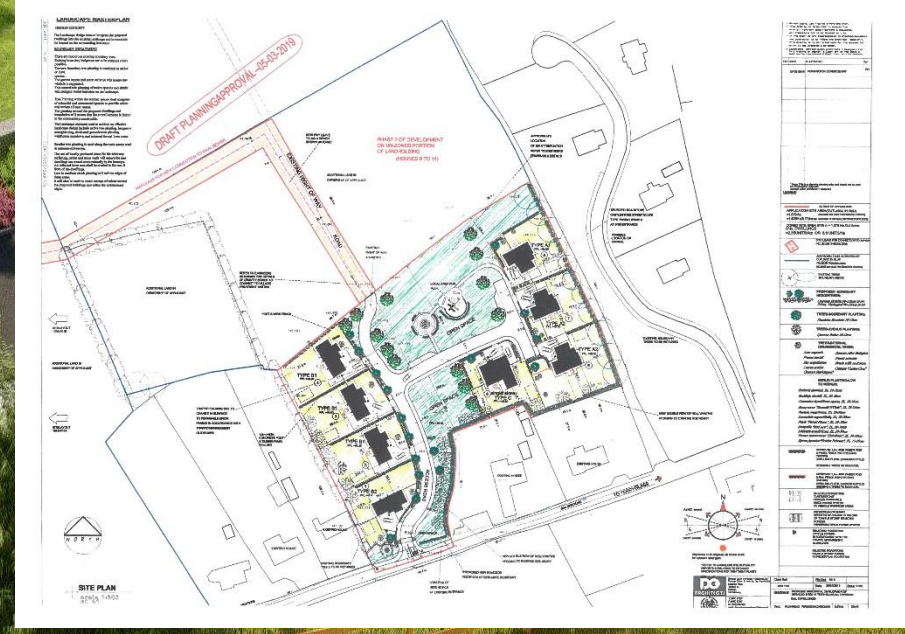
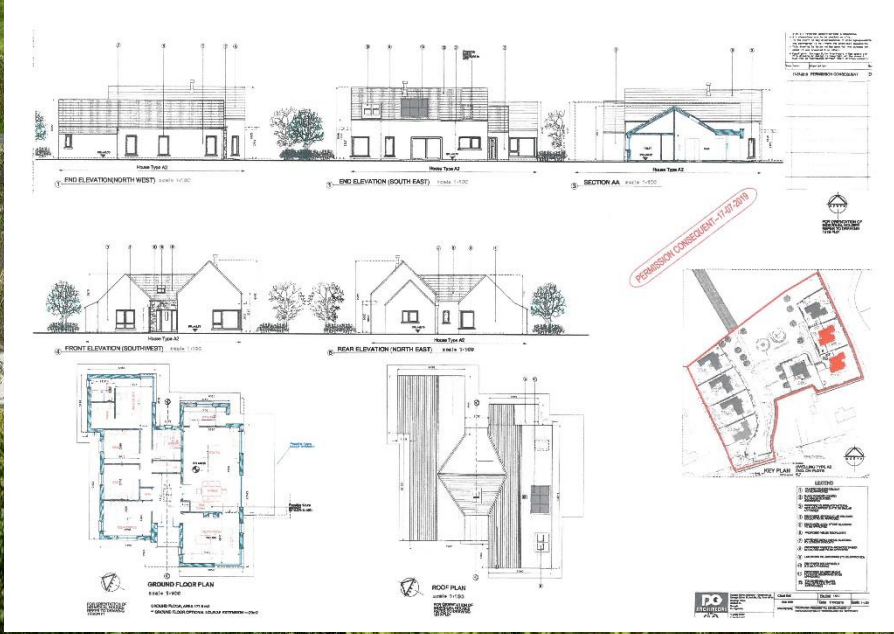
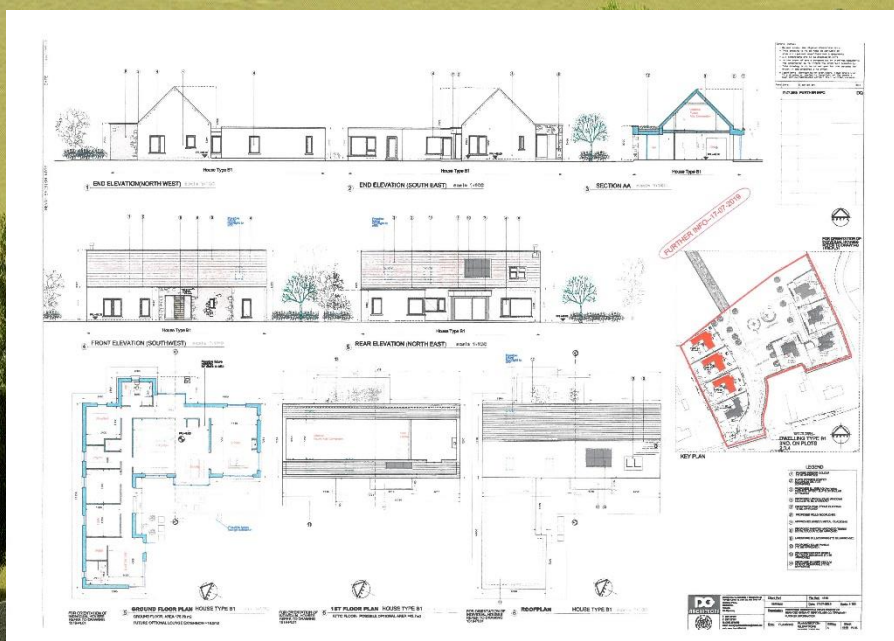
Specification

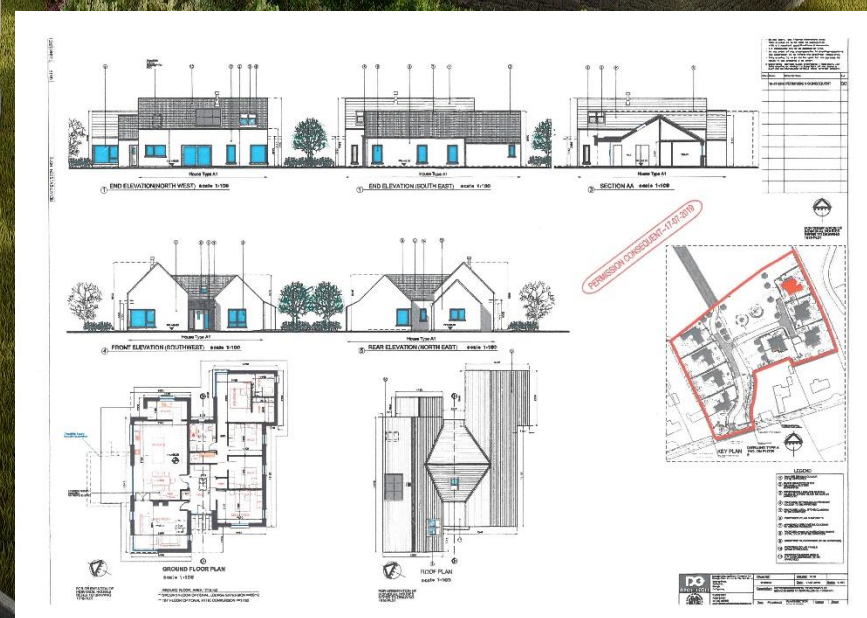
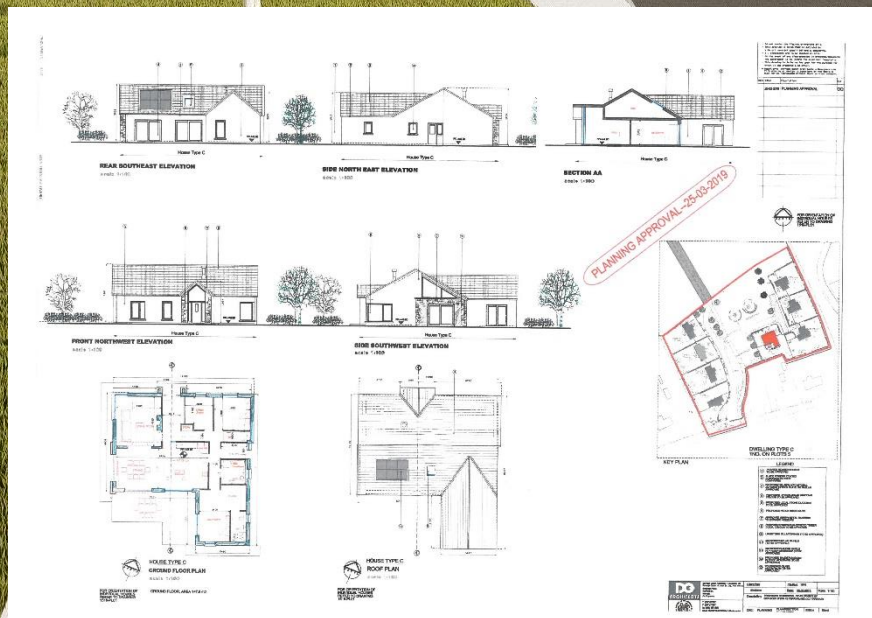
Internally

- All houses painted (masonry/ timber work & ceilings)
- P.C. allowance for kitchen - €10,000.
- Air to water heating system with under floor heating.
- Solar P.V. panels (electricity generating).
- Wired for high speed broadband.

Externally

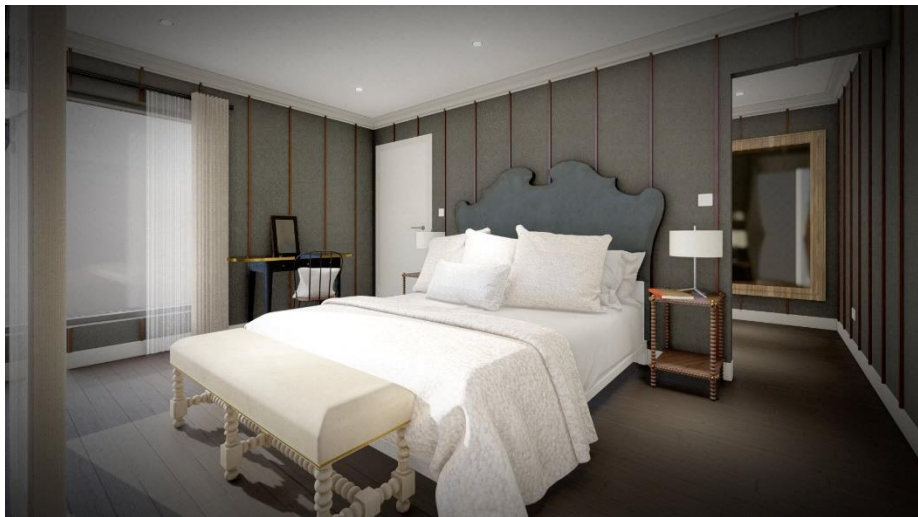
- Tarmac driveways.
- Lawns levelled and seeded.
- Maintenance free external finishes.



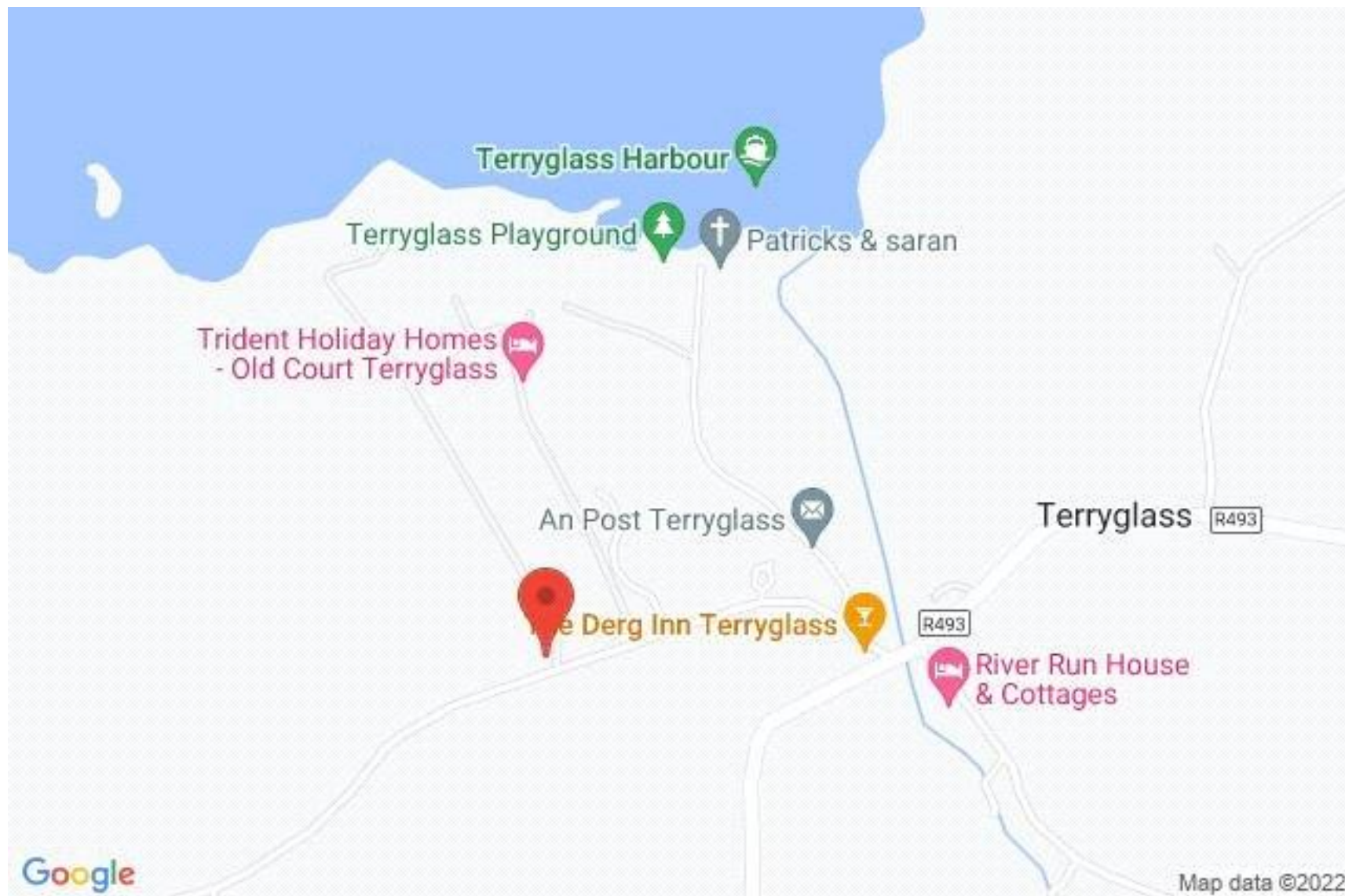














SELLING AGENT

William Talbot
Sherry FitzGerald Talbot
52 Kenyon Street
Nenagh, Co. Tipperary

T: +353 (0) 67 31496
E: william@sftalbot.ie
www.sherryfitz.ie

Jackie Feighery
Sherry FitzGerald Talbot
52 Kenyon Street
Nenagh, Co. Tipperary

T: +353 (0) 67 31496
E: jackie@sftalbot.ie
www.sherryfitz.ie

CONDITIONS TO BE NOTED: A full copy of our general brochure conditions can be viewed on our website at <http://www.sherryfitz.ie/terms>, or can be requested from your local Sherry FitzGerald office. We strongly recommend that you familiarise yourself with these general conditions. While care has been taken to ensure that information contained in Sherry FitzGerald publications is correct at the time of publication, changes in circumstances after the time of publication may impact on the accuracy of this.

PSRA Registration No. 001010
