

# 8 AIDEEN PLACE MEWS

off Aideen Avenue, Terenure, Dublin 6W



Attractive Four Bedroom House

BER B3

Stylish four bedroom house convenient to all the amenities of Terenure, Kimmage and South City





## THE PROPERTY

Large four bedroom house in popular residential area close to all the amenities of Terenure, Rathgar, Kimmage and the South City.

Convenient to shops, restaurants, cafes, schools & colleges, bus routes, sports & leisure facilities.

Situated in attractive modern development off Aideen Avenue, 150 metres from Kimmage Road Lower.

The house is very spacious, extending to 130 sq. m (1,399 sq.ft.) & comprising entrance hall, large livingroom & diningroom/kitchen, utility room, sittingroom, three double bedrooms and one single bedroom, bathroom and two ensuites.





## ACCOMMODATION SCHEDULE

### Hallway

**Sitting Room:** 4.26m x 3.47m

**Kitchen / Dining Room:** 4.85m x 3.47m with a full range of presses and built-in appliances

**Utility Room:** 1.73m x 1.55m

**WC:** 1.55m x 1.54m with wc and whb

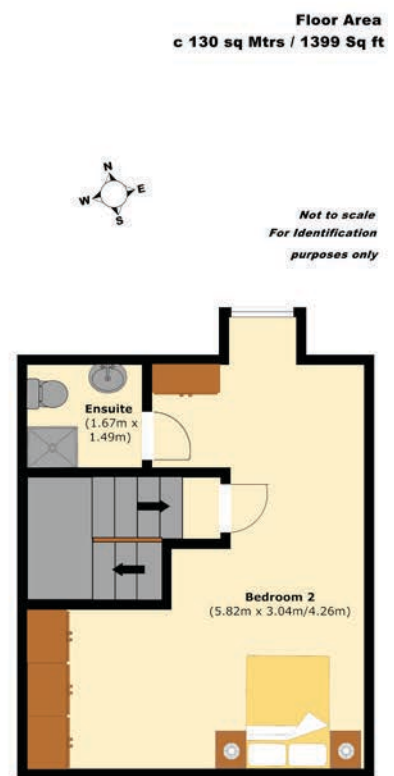
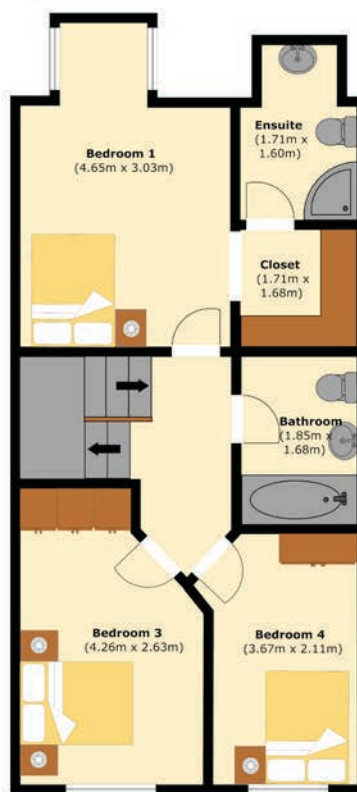
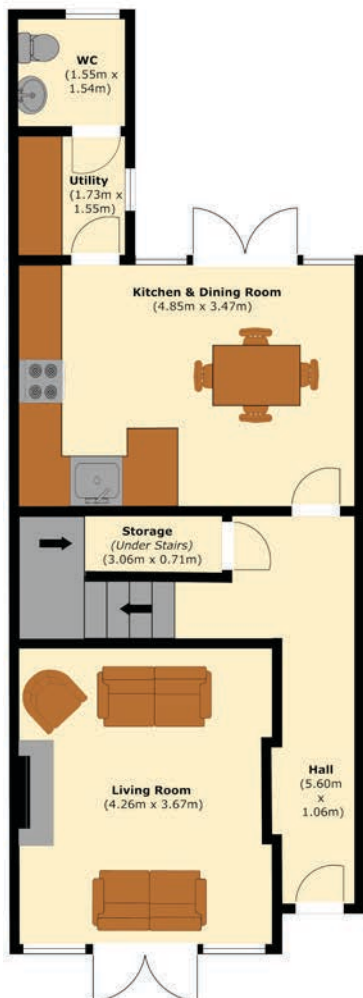
**Bedroom 1:** 4.65m x 3.03m with walk-in wardrobe and en-suite bathroom

**Bedroom 2:** 5.82m x 3.04m/4.26mm with built-in wardrobes and en-suite bathroom

**Bedroom 3:** 4.26m x 2.63m with built-in wardrobes

**Bedroom 4:** 3.67m x 2.11m with built-in wardrobes

**Bathroom:** 1.85m x 1.68m



**Floor Area**  
c 130 sq Mtrs / 1399 Sq ft



*Not to scale  
For Identification  
purposes only*

