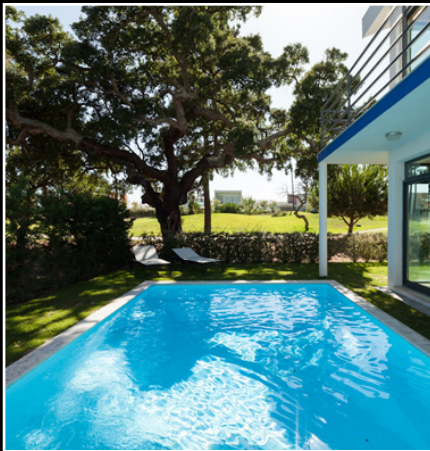




# ARRÁBIDA

RESORT & GOLF ACADEMY



Detached Villa



# Photos I

## Detached Villa





# Plans I

## Detached Villa





Photo I

Detached Villa  
Model A





### First Floor

- 1 - Master Bedroom | 20.25 sqm
- 2 - Master Bathroom | 3.95 sqm
- 3 - Bedroom | 13.60 sqm
- 4 - Office | 11.95 sqm
- 5 - Bathroom | 4.50 sqm

### Ground Floor

- 6 - Suite Bedroom | 18.75 sqm
- 7 - Suite Bathroom | 3.50 sqm
- 8 - Kitchen | 13.15 sqm
- 9 - Living Room | 45.95 sqm
- 10 - Dining Room | 20.65 sqm

- 11 - Terraces and Balconies Area | 45.19 sqm
- 12 - Private Swimming Pool and Garden

First Floor Area | 76.55 sqm

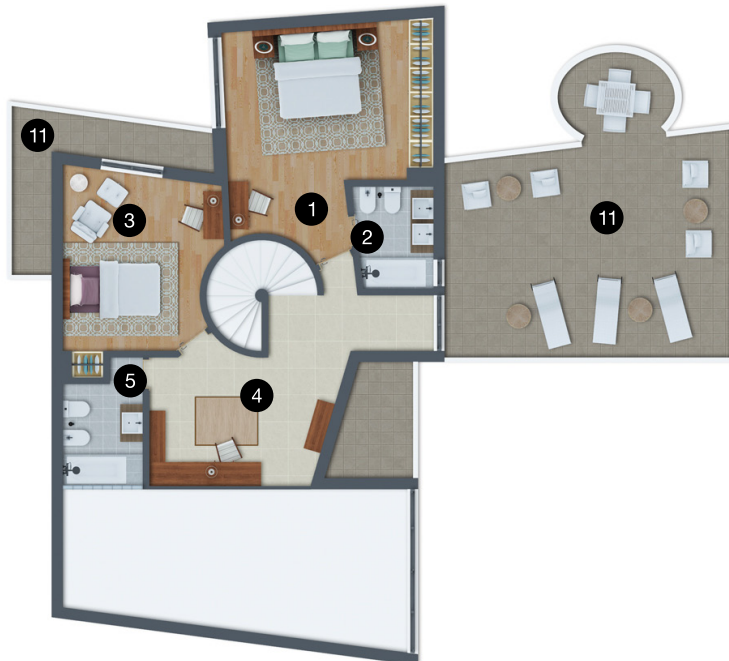
Ground Floor Area | 123.60 sqm

Covered Area | 200.00 sqm

## Detached Villa

Model A3

### First Floor



### Ground Floor



The computer generated images provide only a representation of the size, layout and style of the products; therefore the developers reserve the right to amend any elements shown herein.



## First Floor

- 1 - Master Bedroom | 20.05 sqm
- 2 - Master Bathroom | 3.95 sqm
- 3 - Bedroom | 12.75 sqm
- 4 - Suite Bedroom | 21.35 sqm
- 5 - Suite Bathroom | 4.15 sqm

## Ground Floor

- 6 - Suite Bedroom | 18.65 sqm
- 7 - Suite Bathroom | 3.50 sqm
- 8 - Kitchen | 13.00 sqm
- 9 - Living Room | 45.95 sqm
- 10 - Dining Room | 23.95 sqm

- 11 - Terraces and Balconies Area | 48.98 sqm
- 12 - Private Swimming Pool and Garden

First Floor Area | 92.55 sqm

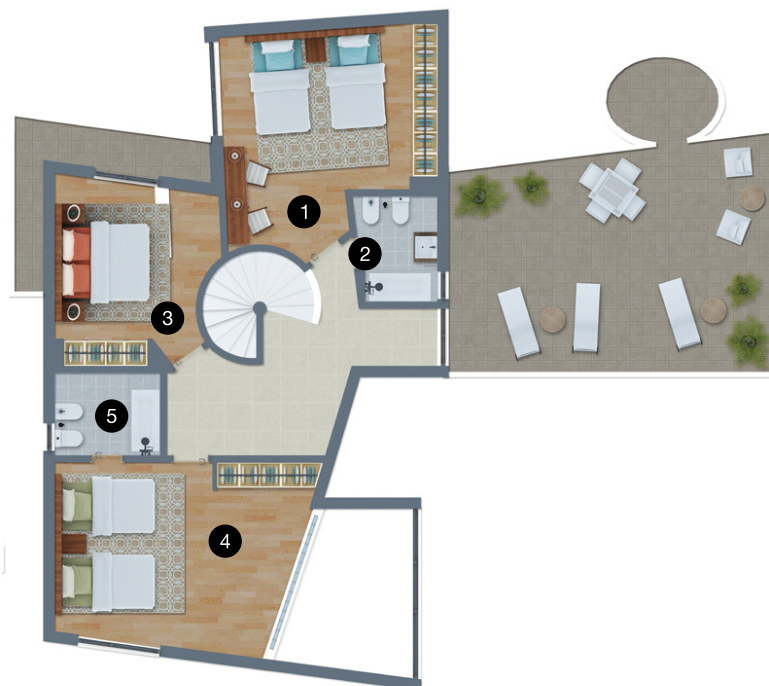
Ground Floor Area | 127.40 sqm

Covered Area | 220.00 sqm

# Detached Villa

Model A4

## First Floor



## Ground Floor



The computer generated images provide only a representation of the size, layout and style of the products; therefore the developers reserve the right to amend any elements shown herein.



Photo I

Detached Villa  
Model B





## First Floor

- 1 - Master Bedroom | 13.05 sqm
- 2 - Master Bathroom | 4.30 sqm
- 3 - Suite Bedroom | 12.75 sqm
- 4 - Suite Bathroom | 4.00 sqm
- 5 - Suite Bedroom | 14.10 sqm
- 6 - Suite Bathroom | 4.00 sqm

## Ground Floor

- 7 - Hall | 7.00 sqm
- 8 - Bathroom | 2.30 sqm
- 9 - Office | 11.10 sqm
- 10 - Kitchen | 7.40 sqm
- 11 - Living Room | 55.20 sqm

- 12 - Terraces and Balconies Area | 34.13 sqm
- 13 - Private Swimming Pool and Garden

First Floor Area | 78.55 sqm

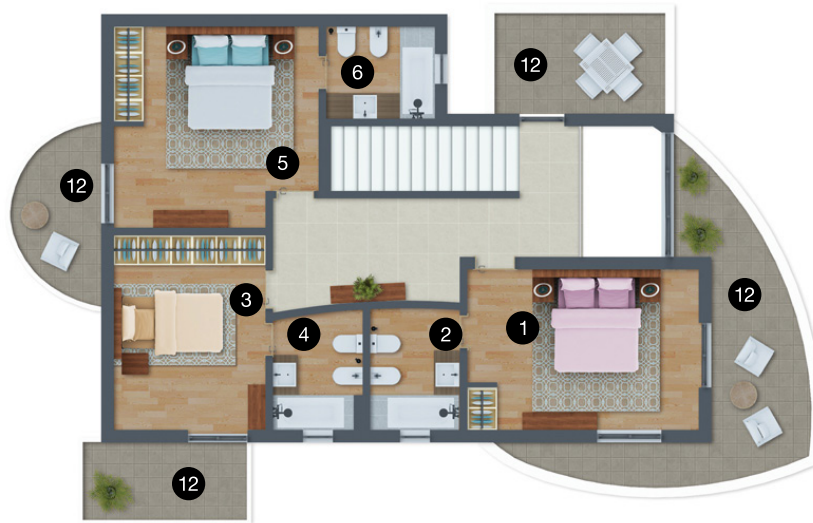
Ground Floor Area | 102.95 sqm

Covered Area | 180.00 sqm

# Detached Villa

Model B1

## First Floor



## Ground Floor



The computer generated images provide only a representation of the size, layout and style of the products; therefore the developers reserve the right to amend any elements shown herein.



## First Floor

- 1 - Master Bedroom | 17.60 sqm
- 2 - Master Bathroom | 4.30 sqm
- 3 - Suite Bedroom | 13.75 sqm
- 4 - Suite Bathroom | 4.05 sqm
- 5 - Suite Bedroom | 15.70 sqm
- 6 - Suite Bathroom | 4.05 sqm

## Ground Floor

- 7 - Hall | 8.25 sqm
- 8 - Bathroom | 2.95 sqm
- 9 - Kitchen | 8.90 sqm
- 10 - Office | 12.95 sqm
- 11 - Living Room | 57.55 sqm

# Detached Villa

Model B3

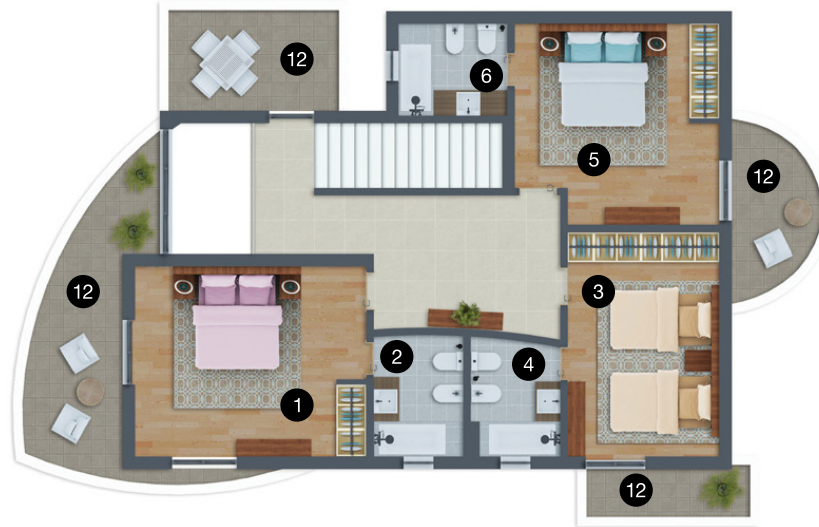
- 12 - Terraces and Balconies Area | 30.20 sqm
- 13 - Private Swimming Pool and Garden

First Floor Area | 89.95 sqm

Ground Floor Area | 110.50 sqm

Covered Area | 200.00 sqm

## First Floor



## Ground Floor



The computer generated images provide only a representation of the size, layout and style of the products; therefore the developers reserve the right to amend any elements shown herein.



Photo I

Detached Villa  
Model D





## First Floor

- 1 - Master Bedroom | 16.45 sqm
- 2 - Master Bathroom | 3.40 sqm
- 3 - Bedroom | 13.55 sqm
- 4 - Bedroom | 17.60 sqm
- 5 - Bathroom | 4.55 sqm

## Ground Floor

- 6 - Hall | 6.10 sqm
- 7 - Office | 8.40 sqm
- 8 - Bathroom | 3.40 sqm
- 9 - Kitchen | 9.30 sqm
- 10 - Living Room | 61.45 sqm

- 11 - Terraces and Balconies Area | 20.39 sqm
- 12 - Private Swimming Pool and Garden

First Floor Area | 90.15 sqm

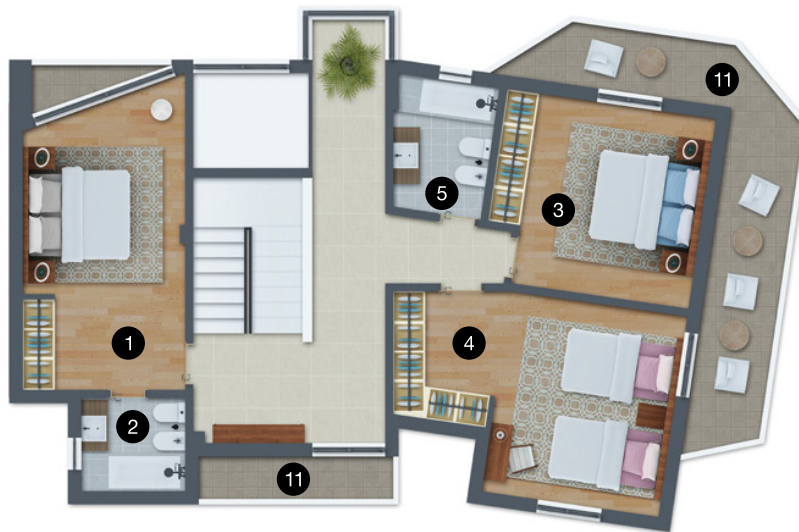
Ground Floor Area | 109.85 sqm

Covered Area | 200.00 sqm

# Detached Villa

Model D3

## First Floor



## Ground Floor





## First Floor

1 - Master Bedroom | 19.90 sqm  
2 - Master Bathroom | 3.65 sqm  
3 - Bedroom | 13.45 sqm  
4 - Bedroom | 25.55 sqm  
5 - Bedroom | 18.10 sqm  
6 - Bathroom | 4.60 sqm  
7 - Bathroom | 2.65 sqm

12 - Terraces and Balconies Area | 18.93 sqm  
13 - Private Swimming Pool and Garden

First Floor Area | 122.95 sqm

Covered Area | 250.00 sqm

## Ground Floor

8 - Bedroom | 12.90 sqm  
9 - Bathroom | 3.60 sqm  
10 - Kitchen | 13.30 sqm  
11 - Living Room | 74.15 sqm

Ground Floor Area | 127.40 sqm

# Detached Villa

Model D5

## First Floor



## Ground Floor





Photo I

Detached Villa  
Model F





## First Floor

- 1 - Master Bedroom | 14.65 sqm
- 2 - Master Bathroom | 3.75 sqm
- 3 - Bedroom | 12.90 sqm
- 4 - Bedroom | 10.70 sqm
- 5 - Bathroom | 3.60 sqm
- 6 - Office | 9.40 sqm

- 13 - Terraces and Balconies Area | 3.12 sqm
- 14 - Private Swimming Pool and Garden

First Floor Area | 72.00 sqm

Covered Area | 180.00 sqm

## Ground Floor

- 7 - Hall | 3.00 sqm
- 8 - Bathroom | 3.65 sqm
- 9 - Kitchen | 13.25 sqm
- 10 - Pantry | 2.65 sqm
- 11 - Living Room | 46.00 sqm
- 12 - Dining Room | 14.70 sqm

Ground Floor Area | 108.00 sqm

# Detached Villa

Model F1

## First Floor



## Ground Floor



The computer generated images provide only a representation of the size, layout and style of the products; therefore the developers reserve the right to amend any elements shown herein.



## First Floor

- 1 - Master Bedroom | 14.65 sqm
- 2 - Master Bathroom | 3.75 sqm
- 3 - Bedroom | 13.25 sqm
- 4 - Bedroom | 10.70 sqm
- 5 - Bathroom | 3.60 sqm
- 6 - Office | 9.75 sqm

## Ground Floor

- 7 - Hall | 3.00 sqm
- 8 - Bathroom | 3.65 sqm
- 9 - Kitchen | 13.25 sqm
- 10 - Pantry | 2.65 sqm
- 11 - Living Room | 66.85 sqm
- 12 - Dining Room | 14.70 sqm

- 13 - Terraces and Balconies Area | 3.20 sqm
- 14 - Private Swimming Pool and Garden

First Floor Area | 73.00 sqm

Ground Floor Area | 127.00 sqm

Covered Area | 200.00 sqm

# Detached Villa

Model F3

## First Floor



## Ground Floor





## First Floor

- 1 - Master Bedroom | 18.00 sqm
- 2 - Master Bathroom | 4.15 sqm
- 3 - Bedroom | 12.20 sqm
- 4 - Bedroom | 14.55 sqm
- 5 - Bathroom | 4.10 sqm
- 6 - Office | 11.45 sqm

## Ground Floor

- 7 - Hall | 3.00 sqm
- 8 - Bathroom | 5.15 sqm
- 9 - Kitchen | 12.75 sqm
- 10 - Pantry | 3.30 sqm
- 11 - Living Room | 62.35 sqm
- 12 - Dining Room | 18.20 sqm

- 13 - Terraces and Balconies Area | 3.12 sqm
- 14 - Private Swimming Pool and Garden

First Floor Area | 84.55 sqm

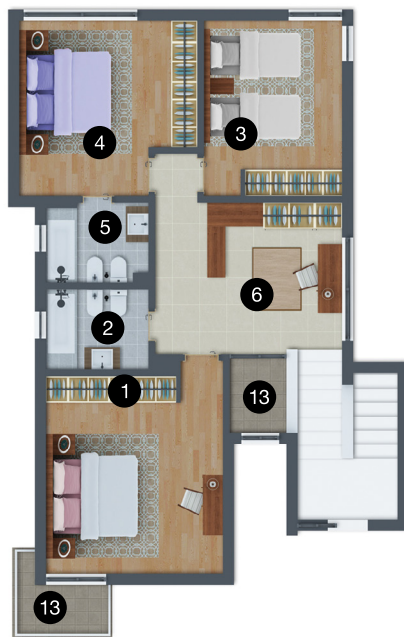
Ground Floor Area | 135.45 sqm

Covered Area | 220.00 sqm

# Detached Villa

Model F4

## First Floor



## Ground Floor



The computer generated images provide only a representation of the size, layout and style of the products; therefore the developers reserve the right to amend any elements shown herein.



Photo I

Detached Villa  
Model G





### First Floor

- 1 - Master Bedroom | 26.40 sqm
- 2 - Master Bathroom | 4.30 sqm
- 3 - Bedroom | 16.60 sqm
- 4 - Bedroom | 14.25 sqm
- 5 - Bathroom | 3.70 sqm

### Ground Floor

- 6 - Hall | 7.30 sqm
- 7 - Bathroom | 1.75 sqm
- 8 - Office | 14.35 sqm
- 9 - Kitchen | 11.00 sqm
- 10 - Living Room | 54.85 sqm

## Detached Villa

Model G3

11 - Terraces and Balconies Area | 6.04 sqm

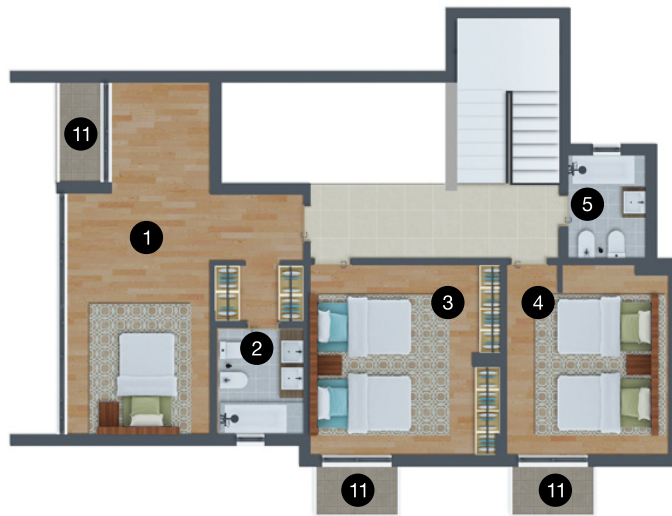
12 - Private Swimming Pool and Garden

First Floor Area | 90.00 sqm

Ground Floor Area | 110.00 sqm

Covered Area | 200.00 sqm

### First Floor



### Ground Floor





Photo I

Detached Villa  
Model I





## First Floor

- 1 - Master Bedroom | 19.40 sqm
- 2 - Master Bathroom | 3.65 sqm
- 3 - Bedroom | 13.95 sqm
- 4 - Bedroom | 14.20 sqm
- 5 - Bathroom | 4.55 sqm
- 6 - Office | 4.50 sqm

## Ground Floor

- 7 - Hall | 11.15 sqm
- 8 - Bathroom | 4.25 sqm
- 9 - Kitchen | 13.30 sqm
- 10 - Living Room | 51.45 sqm

- 11 - Terraces and Balconies Area | 8.78 sqm
- 12 - Private Swimming Pool and Garden

First Floor Area | 88.70 sqm

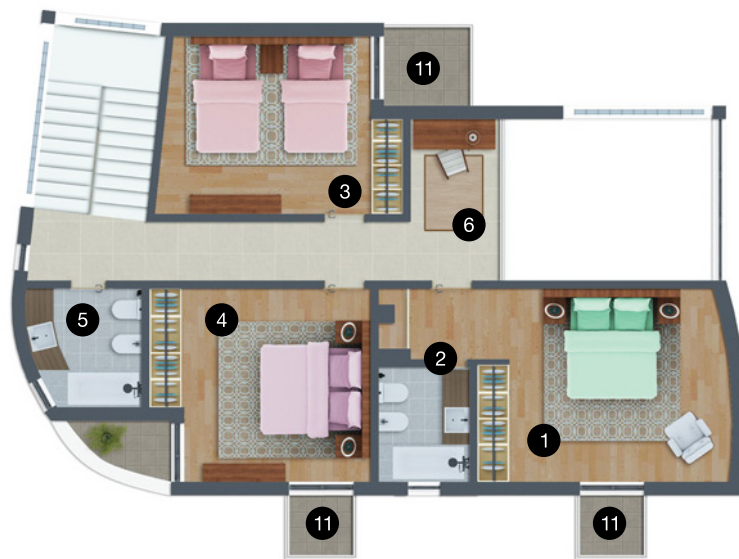
Ground Floor Area | 101.65 sqm

Covered Area | 190.00 sqm

# Detached Villa

Model I2

## First Floor



## Ground Floor





## First Floor

1 - Master Bedroom | 16.20 sqm  
2 - Master Bathroom | 3.65 sqm  
3 - Bedroom | 15.55 sqm  
4 - Bedroom | 15.25 sqm  
5 - Bathroom | 4.60 sqm

## Ground Floor

6 - Hall | 13.15 sqm  
7 - Bathroom | 4.25 sqm  
8 - Kitchen | 14.05 sqm  
9 - Living Room | 62.05 sqm

10 - Terraces and Balconies Area | 12.58 sqm  
11 - Private Swimming Pool and Garden

First Floor Area | 85.00 sqm

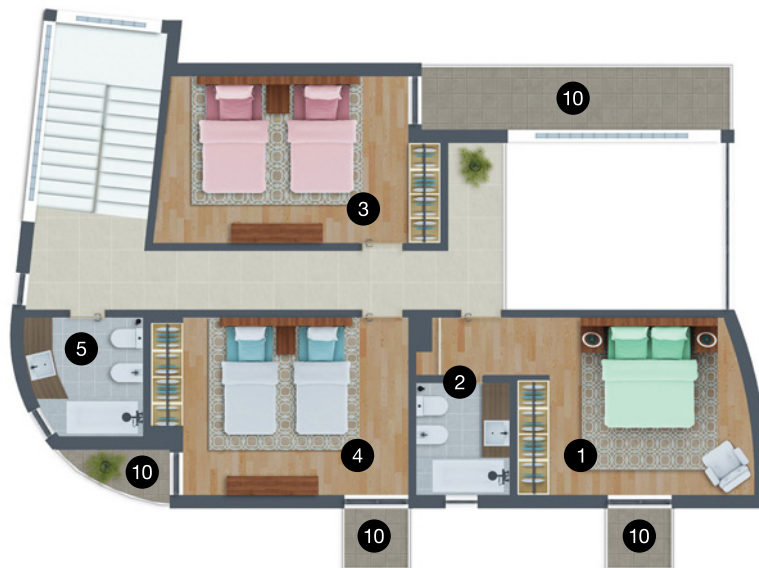
Ground Floor Area | 115.30 sqm

Covered Area | 200.00 sqm

# Detached Villa

Model I3

## First Floor



## Ground Floor





## First Floor

- 1 - Master Bedroom | 18.30 sqm
- 2 - Master Bathroom | 3.65 sqm
- 3 - Bedroom | 10.80 sqm
- 4 - Bathroom | 3.20 sqm
- 5 - Bedroom | 15.95 sqm
- 6 - Bedroom | 15.65 sqm
- 7 - Bathroom | 5.05 sqm

## Ground Floor

- 8 - Hall | 14.30 sqm
- 9 - Bathroom | 4.50 sqm
- 10 - Kitchen | 13.80 sqm
- 11 - Living Room | 63.85 sqm

- 12 - Terraces and Balconies Area | 32.69 sqm
- 13 - Private Swimming Pool and Garden

First Floor Area | 101.30 sqm

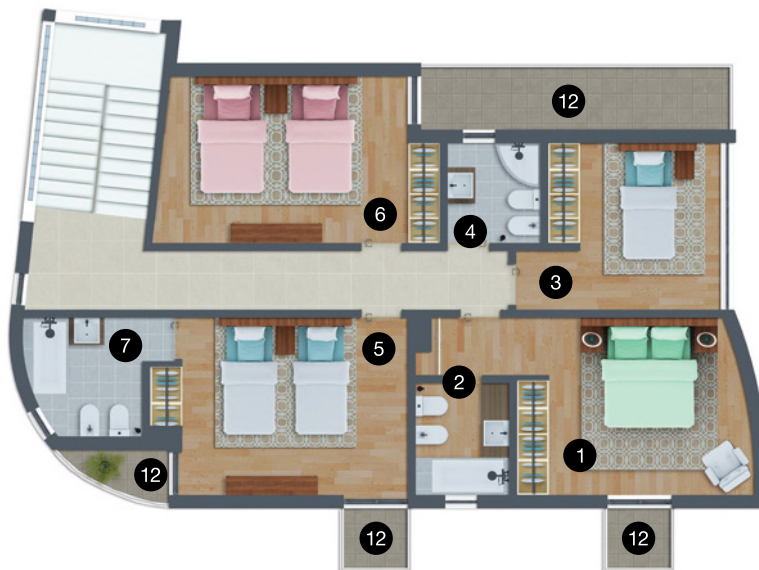
Ground Floor Area | 118.70 sqm

Covered Area | 220.00 sqm

# Detached Villa

Model I4

## First Floor



## Ground Floor





## First Floor

1 - Master Bedroom | 21.60 sqm  
2 - Master Bathroom | 3.60 sqm  
3 - Bedroom | 15.00 sqm  
4 - Bathroom | 3.80 sqm  
5 - Bedroom | 15.15 sqm  
6 - Bedroom | 17.20 sqm  
7 - Bathroom | 5.90 sqm

13 - Terraces and Balconies Area | 13.68 sqm  
14 - Private Swimming Pool and Garden

First Floor Area | 119.75 sqm

Covered Area | 250.00 sqm

## Ground Floor

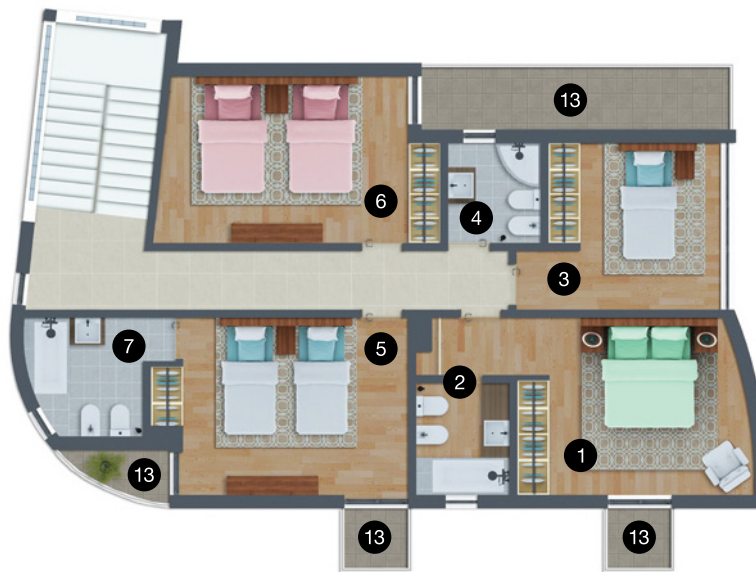
8 - Hall | 6.50 sqm  
9 - Bathroom | 5.30 sqm  
10 - Bedroom | 12.90 sqm  
11 - Kitchen | 14.17 sqm  
12 - Living Room | 57.27 sqm

Ground Floor Area | 130.25 sqm

# Detached Villa

Model I5

## First Floor



## Ground Floor





Photo I

Detached Villa  
Model J





## First Floor

1 - Master Bedroom | 23.25 sqm  
2 - Master Bathroom | 4.20 sqm  
3 - Bedroom | 15.10 sqm  
4 - Suite Bedroom | 12.05 sqm  
5 - Bathroom | 4.05 sqm

## Ground Floor

6 - Hall | 5.30 sqm  
7 - Bathroom | 1.90 sqm  
8 - Pantry | 1.85 sqm  
9 - Kitchen | 13.00 sqm  
10 - Living Room | 50.60 sqm

11 - Terraces and Balconies Area | 21.17 sqm  
12 - Private Swimming Pool and Garden

First Floor Area | 87.00 sqm

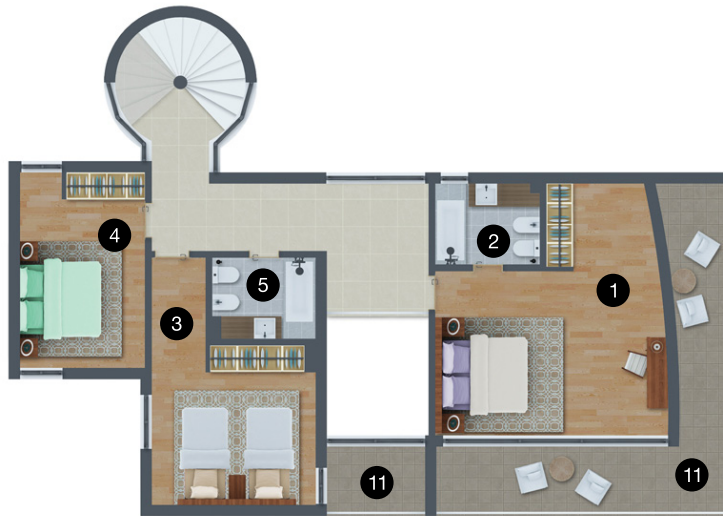
Ground Floor Area | 93.00 sqm

Covered Area | 180.00 sqm

# Detached Villa

Model J1

## First Floor



## Ground Floor



The computer generated images provide only a representation of the size, layout and style of the products; therefore the developers reserve the right to amend any elements shown herein.



## First Floor

1 - Master Bedroom | 26.35 sqm  
2 - Master Bathroom | 4.15 sqm  
3 - Bedroom | 15.10 sqm  
4 - Bedroom | 14.20 sqm  
5 - Bathroom | 4.05 sqm

## Ground Floor

6 - Hall | 6.05 sqm  
7 - Bathroom | 1.90 sqm  
8 - Pantry | 1.90 sqm  
9 - Kitchen | 13.15 sqm  
10 - Living Room | 56.65 sqm

11 - Terraces and Balconies Area | 23.76 sqm  
12 - Private Swimming Pool and Garden

First Floor Area | 97.25 sqm

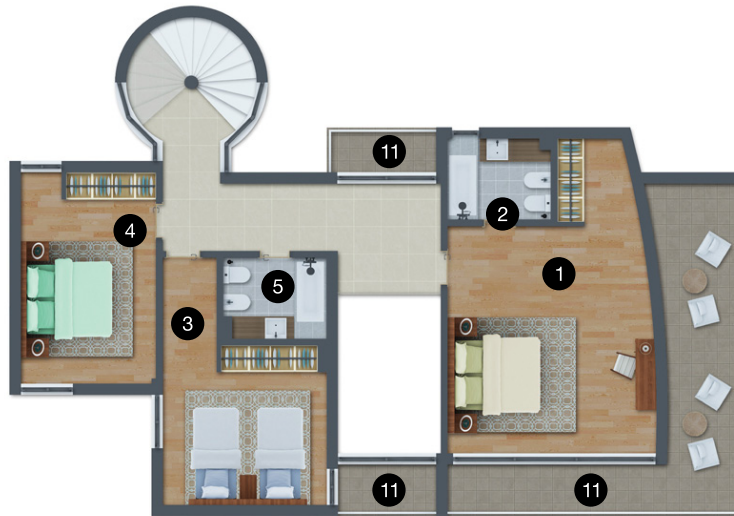
Ground Floor Area | 102.65 sqm

Covered Area | 200.00 sqm

# Detached Villa

Model J3

## First Floor



## Ground Floor





## First Floor

1 - Master Bedroom | 26.20 sqm  
2 - Master Bathroom | 4.15 sqm  
3 - Bedroom | 15.10 sqm  
4 - Suite Bedroom | 11.40 sqm  
5 - Suite Bathroom | 4.15 sqm  
6 - Bathroom | 4.05 sqm

## Ground Floor

7 - Hall | 7.50 sqm  
8 - Bedroom | 13.40 sqm  
9 - Bathroom | 3.50 sqm  
10 - Bathroom | 2.00 sqm  
11 - Pantry | 2.10 sqm  
12 - Kitchen | 13.30 sqm  
13 - Living Room | 54.20 sqm

14 - Terraces and Balconies Area | 34.80 sqm

15 - Private Swimming Pool and Garden

First Floor Area | 98.85 sqm

Ground Floor Area | 121.55 sqm

Covered Area | 220.00 sqm

# Detached Villa

Model J4

## First Floor



## Ground Floor





## First Floor

- 1 - Master Bedroom | 11.40 sqm
- 2 - Master Bathroom | 3.95 sqm
- 3 - Suite Bedroom | 15.55 sqm
- 4 - Suite Bathroom | 4.40 sqm
- 5 - Bedroom | 16.35 sqm
- 6 - Bathroom | 4.60 sqm
- 7 - Bedroom | 22.95 sqm

15 - Terraces and Balconies Area | 26.81 sqm

16 - Private Swimming Pool and Garden

First Floor Area | 116.65 sqm

Covered Area | 250.45 sqm

## Ground Floor

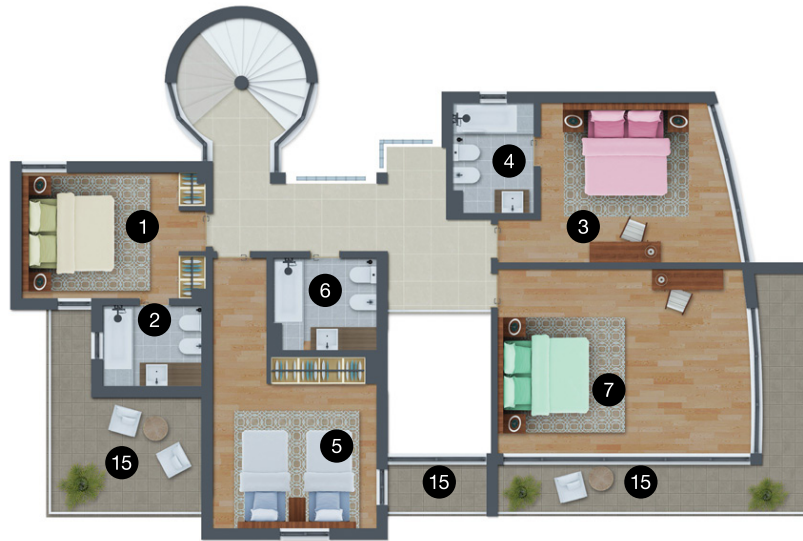
- 8 - Suite Bedroom | 13.30 sqm
- 9 - Suite Bathroom | 3.95 sqm
- 10 - Hall | 7.50 sqm
- 11 - Bathroom | 1.95 sqm
- 12 - Kitchen | 13.15 sqm
- 13 - Pantry | 1.95 sqm
- 14 - Living Room | 65.80 sqm

Ground Floor Area | 133.35 sqm

# Detached Villa

Model J5

## First Floor



## Ground Floor



The computer generated images provide only a representation of the size, layout and style of the products; therefore the developers reserve the right to amend any elements shown herein.



Photo I

Detached Villa  
Model L





## First Floor

- 1 - Master Bedroom | 11.70 sqm
- 2 - Master Bathroom | 4.60 sqm
- 3 - Bedroom | 12.90 sqm
- 4 - Bedroom | 14.35 sqm
- 5 - Bathroom | 4.15 sqm
- 6 - Office | 4.90 sqm

## Ground Floor

- 7 - Hall | 12.00 sqm
- 8 - Bathroom | 3.15 sqm
- 9 - Kitchen | 9.10 sqm
- 10 - Dining Room | 9.90 sqm
- 11 - Living Room | 57.95 sqm

- 12 - Terraces and Balconies Area | 48.06 sqm
- 13 - Private Swimming Pool and Garden

First Floor Area | 84.60 sqm

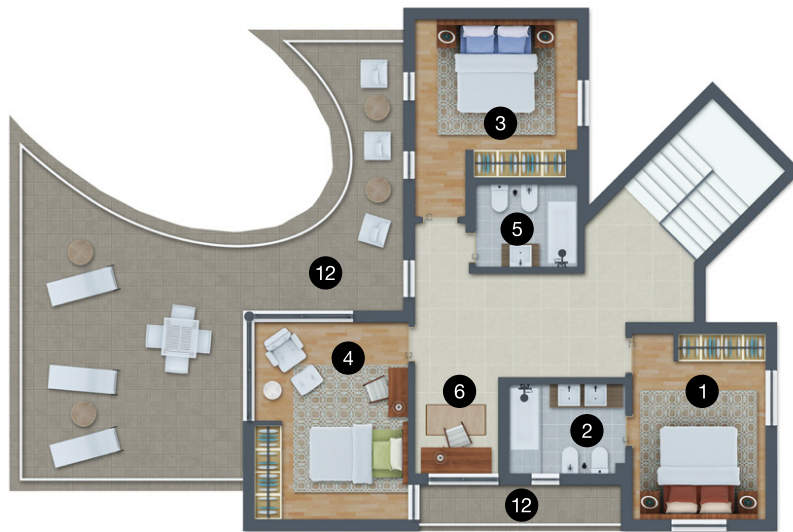
Ground Floor Area | 115.30 sqm

Covered Area | 200.00 sqm

# Detached Villa

Model L3

## First Floor



## Ground Floor





Photo I

Detached Villa  
Model O





## First Floor

- 1 - Master Bedroom | 24.70 sqm
- 2 - Master Bathroom | 3.85 sqm
- 3 - Suite Bedroom | 17.50 sqm
- 4 - Suite Bathroom | 3.80 sqm
- 5 - Bedroom | 18.70 sqm
- 6 - Bathroom | 3.70 sqm

## Ground Floor

- 7 - Hall | 7.20 sqm
- 8 - Pantry | 2.80 sqm
- 9 - Bathroom | 2.70 sqm
- 10 - Kitchen | 10.25 sqm
- 11 - Living Room | 58.85 sqm

- 12 - Terraces and Balconies Area | 3.64 sqm
- 13 - Private Swimming Pool and Garden

First Floor Area | 98.00 sqm

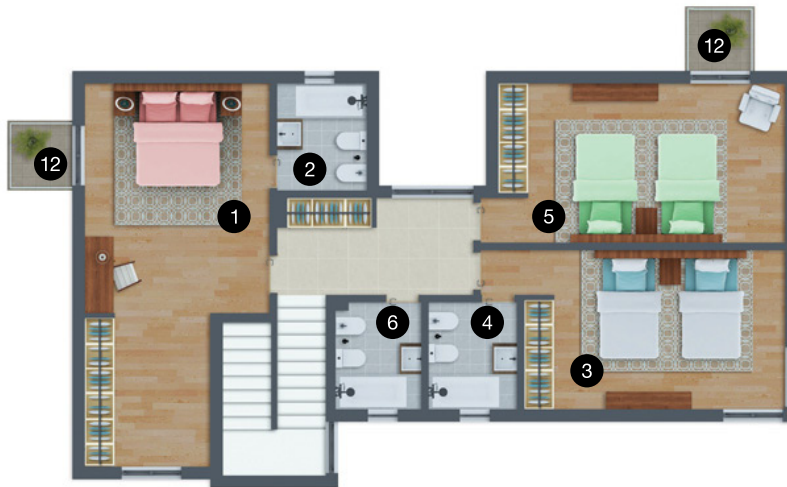
Ground Floor Area | 102.00 sqm

Covered Area | 200.00 sqm

# Detached Villa

Model O3

## First Floor



## Ground Floor





# Plans I

## Semi-Detached Villa





Photo I

Semi-Detached  
Villa  
**Model MA**





## First Floor

- 1 - Master Bedroom | 20.53 sqm
- 2 - Master Bathroom | 4.00 sqm
- 3 - Office | 7.56 sqm
- 4 - Circulation | 4.92 sqm

- 10 - Balconies Area | 4.50 sqm
- 11 - Private Swimming Pool and Garden

First Floor Area | 52.02 sqm

Covered Area | 130.00 sqm

## Ground Floor

- 5 - Hall | 9.76 sqm
- 6 - Bedroom | 9.92 sqm
- 7 - Bathroom | 3.65 sqm
- 8 - Kitchen | 7.56 sqm
- 9 - Living Room | 31.65 sqm

Ground Floor Area | 77.98 sqm

# Semi-Detached Villa

Model MA

## First Floor



## Ground Floor





Photo I

Semi-Detached  
Villa  
**Model MB**





## First Floor

- 1 - Master Bedroom | 20.53 sqm
- 2 - Master Bathroom | 4.00 sqm
- 3 - Office | 12.16 sqm
- 4 - Circulation | 12.65 sqm

## Ground Floor

- 5 - Hall | 9.76 sqm
- 6 - Bedroom | 9.92 sqm
- 7 - Bathroom | 3.65 sqm
- 8 - Kitchen | 7.56 sqm
- 9 - Living Room | 31.65 sqm

# Semi-Detached Villa

Model MB

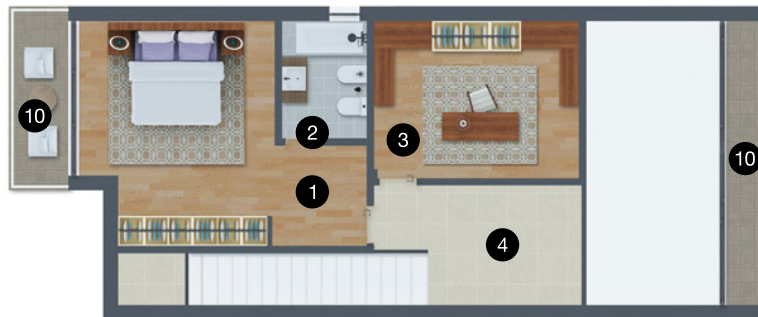
- 10 - Balconies Area | 4.50 sqm
- 11 - Private Swimming Pool and Garden

First Floor Area | 61.20 sqm

Ground Floor Area | 79.30 sqm

Covered Area | 140.00 sqm

## First Floor



## Ground Floor





